

# FACT BOOK 2003-2004

---

Planning and Institutional Research

<http://www.ir.ilstu.edu/>  
Illinois State University  
Normal, IL 61790-3490  
(309) 438-8393  
December 2003

TABLE OF CONTENTS

UNIVERSITY INFORMATION

University Overview ..... 1  
Illinois State University Mission Statement ..... 2  
Our Vision and Values – Educating Illinois ..... 3  
Board of Trustees ..... 4  
Office of the President..... 6  
Office of Vice President for Academic Affairs and Provost ..... 7  
Office of Vice President for Finance and Planning ..... 8  
Office of Vice President for Student Affairs ..... 9  
Office of Vice President for University Advancement..... 10  
Academic Colleges and Departments..... 11  
Academic Calendar ..... 12

STUDENT INFORMATION

Section Overview ..... 14  
Completed Applications, Acceptances, and Enrollments – On-Campus – Fall 1999 through Fall 2003 ..... 15  
Completed Applications, Acceptances, and Enrollments by Racial/Ethnic – Fall 1999 through Fall 2003 ..... 16  
American College Testing (ACT) Mean Scores – Fall 1999 through Fall 2003..... 17  
ACT Scores Fall 2003 New Beginning Freshmen..... 18  
New Beginning Freshmen by ACT Scores and High School Percentile Rank – Fall 2002 through Fall 2003 ..... 19  
New Students by Class and Type of Admission – Fall 2001 through Fall 2003..... 20  
Headcount and FTE Enrollment On and Off-Campus by Class/Level – Fall 1999 through Fall 2003 ..... 21  
Undergraduate and Graduate Headcount Enrollment by College – Fall 1999 through Fall 2003..... 22  
Undergraduate and Graduate Headcount Enrollment by Racial/Ethnic Designation – Fall 1999 through Fall 2003 ..... 23  
Undergraduate and Graduate Headcount Enrollment by Racial/Ethnic Designation as a Percent of Total Graph ..... 24  
Enrollment by Age and Gender – Fall 2003 ..... 25  
Undergraduate Headcount Enrollment by College, Department and Major – Fall 1999 through Fall 2003..... 26  
Graduate Headcount Enrollment by Level, College, Department and Major – Fall 1999 through Fall 2003..... 28  
Undergraduate and Graduate Headcount Enrollment by Gender and College – Fall 2003..... 31  
Undergraduate Headcount Enrollment by Racial/Ethnic Designation, College, and Department – Fall 2003 ..... 32  
Graduate Headcount Enrollment by Racial/Ethnic Designation, College, Department and Major – Fall 2003..... 34  
Semester Hours Carried by Illinois Residency – Fall 2003 ..... 37  
Enrollment by Geographic Location – Fall 2003 ..... 38  
Historical Headcount Enrollment – Fall 1974 through Fall 2003..... 40  
Historical Headcount Enrollment – Fall 1944 through Fall 2003 Graph ..... 40  
Historical Degrees Conferred – FY 1974 through FY 2003 ..... 40  
Historical Degrees Conferred – FY 1944 through FY 2003 Graph ..... 40  
Degrees Conferred by College, Level, Department and Major – FY 1999 through FY 2003 ..... 41  
Degrees Awarded by College, Level, Racial/Ethnic Designation and Gender – FY 2003 ..... 47  
Persistence of Freshmen Cohorts – All Students..... 48  
Persistence of Freshmen Cohorts – Black Non-Hispanic Students..... 48  
Persistence of Freshmen Cohorts – Hispanic Students..... 48  
Persistence of Freshmen Cohorts – Male Students..... 49  
Persistence of Freshmen Cohorts – Female Students ..... 49  
Graduation Rates of Freshmen Cohorts – All Students ..... 50  
Graduation Rates of Freshmen Cohorts – Black Non-Hispanic Students..... 50  
Graduation Rates of Freshmen Cohorts – Hispanic Students ..... 50  
Graduation Rates of Freshmen Cohorts – Male Students ..... 51  
Graduation Rates of Freshmen Cohorts – Female Students ..... 51  
Class Size Distribution for Courses - Fall 2000 through 2003 ..... 52  
Class Size Distribution - Fall 2003 Graph..... 52  
Student Financial Aid – FY 2003 ..... 53

**TABLE OF CONTENTS**

**FACULTY/STAFF INFORMATION**

Section Overview ..... 55  
University Staff Number and FTE by Employee Category – Fall 2003 ..... 56  
University Staff Number and FTE by Employee Category – Fall 2003 Graph ..... 56  
Faculty/Staff by Gender and Racial/Ethnic Designation – Fall 2001 through Fall 2003 ..... 57  
Departmental Faculty by Tenure, Appointment, Gender and Racial/Ethnic Designation Fall 1999 through Fall 2003 ..... 58  
Departmental Faculty by College, Department, and Percent Appointment Fall 1999 through Fall 2003 ..... 59  
Departmental Faculty by College, Department, Rank, and Percent Appointment - Fall 2003 ..... 60  
Departmental Faculty by College, Rank, Gender, and Racial/Ethnic Designation – Fall 2003 ..... 61  
Tenure/Tenure Track Faculty by Rank and Age – Fall 2003 ..... 62  
Tenure/Tenure Track Faculty by Rank and Age – Fall 2003 Graph ..... 62

**INSTITUTIONAL RESOURCES**

Section Overview ..... 64  
Historical State Appropriations for Operations and Grants by Source of Funds – FY 2000 through FY 2004 ..... 65  
Appropriations for Operations and Grants by Source of Funds – FY 1986 through FY 2004 Graph ..... 65  
Total Expenditures and Mandatory Transfers – FY 1999 through FY 2003 ..... 66  
Current Funds Revenues by Source – FY 2002 and FY 2003 ..... 67  
Current Funds Revenues by Source – FY 2003 Graph ..... 67  
Instructional Expenditures per Full-time Equivalent (FTE) Student at Illinois Public Universities – FY 2002 ..... 68  
Credit Hours Produced Per Faculty Staff-Year at Illinois Public Universities in FY 2002 ..... 69  
Proportion of Departmental Faculty Staff-Years Devoted to Functions at Illinois Public Universities in FY 2002 ..... 70  
Sponsored Research, Instruction, Creative Works, and Service – FY 2000 through FY 2003 ..... 71  
Awards by Source – FY 2000 through FY 2003 ..... 71

**University Facilities**

Section Overview ..... 73  
Residence Hall Occupancy by Gender and Class Level – Fall 1999 through Fall 2003 ..... 74  
Residence Hall and Associated Buildings as of Fall 2003 ..... 75  
Academic Buildings as of Fall 2003 ..... 76  
General, Miscellaneous and Support Facilities as of Fall 2003 ..... 77

---

---

# University Information

---

---

## University Overview

Illinois State University, the first public university in the state, is a coeducational, residential university with six colleges and 35 academic departments that offer more than 160 fields of study. The University is accredited by the Higher Learning Commission of the North Central Association of Colleges and Schools and by the National Council for Accreditation of Teacher Education. The University holds discipline-based accreditation from 23 accrediting agencies. Descriptions of the undergraduate and graduate programs at Illinois State are available at <http://www.admissions.ilstu.edu/>.

Illinois State University is an affiliate of the National Collegiate Athletic Association Division I and a member of both the Gateway Football Conference and the Missouri Valley Conference. The University competes in eight men's sports and eleven women's sports. Descriptions of intercollegiate athletic opportunities at Illinois State are available at [www.redbirds.org/](http://www.redbirds.org/).

During academic year 2000-2001 Illinois State University implemented a new strategic planning process to guide the University to the institution's sesquicentennial. *Educating Illinois: An Action Plan for Distinctiveness and Excellence at Illinois State University 2000-2007* is available at [www.educatingillinois.ilstu.edu/](http://www.educatingillinois.ilstu.edu/). A companion process to shape the future physical development of Illinois State University and its facilities, grounds, and infrastructure is available on the Master Plan web site: [www.masterplan.ilstu.edu/](http://www.masterplan.ilstu.edu/).

### **Illinois State University Mission Statement**

On February 6, 2002, the Academic Senate approved and forwarded to the President the proposed Illinois State University Mission Statement as follows: We at Illinois State University work as a diverse community of scholars with a commitment to fostering a small-college atmosphere with large-university opportunities. We promote the highest academic standards in our teaching, our scholarship and the connections we build between them. We devote all of our resources and energies to creating the most supportive and productive community possible to serve the citizens of Illinois and beyond.

### **Our Vision and Values - Educating Illinois**

By acting on our values in every respect, Illinois State University will come to occupy a unique position of strength and visibility among the institutions of higher education in Illinois, nationally, and internationally. Illinois State University will continue to be the first-choice public university in Illinois for high-achieving, motivated students, who seek an individualized educational experience combined with the resources of a large university.

**Individualized Attention:** Providing the supportive environment of a small-college through an innovative General Education program, strong student-faculty-staff connections, superior student services, and a focus on each student as an individual with unique educational needs and potential. Illinois State University is a campus dedicated to placing the learner at the center of teaching and scholarship.

**Public Opportunity:** Assuring students access to the educational, research, and service opportunities characteristic of a large university, including a wide range of high-quality programs, faculty mentors who are scholars and creative artists of repute in their disciplines, and the support of outstanding facilities and technology and library resources.

**Active Pursuit of Learning and Scholarship:** Working with students as partners in their educational development inside and outside of the classroom, so that students come to appreciate learning as an active and lifelong process; contributing new knowledge through research, creative artistry, and other forms of individual scholarship in which all students, faculty, and staff are encouraged to participate.

**Diversity:** Encouraging community and an informed respect for all differences among students, faculty, and staff by fostering an inclusive environment characterized by ethical behavior and social justice that prepares students to be fully engaged participants in a global society; a diverse faculty and staff mentoring a diverse student population, enhancing pedagogical, research, and service functions.

**Innovation:** Supporting disciplinary excellence and personal growth of students, faculty, and staff through knowledge development and innovative applications in undergraduate and graduate study, pedagogy, research, creative activities, and public service.

## Board of Trustees

The Board of Trustees of Illinois State University is the governing board for Illinois State University. The Board consists of seven members appointed by the Governor for overlapping six-year terms. The eighth member of the Board is a student selected annually by the University student body. The President of the University serves as the primary liaison, linking the Board's responsibilities for policy direction to the University's operational responsibilities for carrying out its mission.

### **Carl E. Kasten - Carlinville, IL**

On July 25, 2003, Carl Kasten was elected Chairperson of the Board of Trustees. Kasten was appointed to the first Illinois State University Board of Trustees in 1996 after serving on the Board of Regents. He was elected the Board secretary from January 1996 through July 2003.

Carl Kasten is a former member of the Illinois Board of Regents and is senior partner in the law firm of Phelps, Kasten, Ruyle, Burns, Carmody & Sims, P.C. in Carlinville.

He received a Bachelor of Arts degree from Illinois State University in social sciences in 1966 and received his law degree in 1969 from the Northwestern University School of Law, where he was a recipient of the Wigmore Key.

Kasten presently serves as the Board liaison to the Illinois State University Alumni Board. He is a member of several bar associations, including the Illinois Trial Lawyers Association on whose Board of Managers he previously served. He is also a member of several professional organizations. (term expires January 2007)

### **Jay D. Bergman - Joliet, IL**

J.D. Bergman was appointed by the Governor to the Board of Trustees to complete the term of William Sulaski who resigned in May 2003. Bergman, a Joliet resident, is president and CEO of Petco Petroleum Corporation, Hinsdale. He received his bachelor's degree in Business Administration from Illinois State University in 1970. Bergman is also chairman of the Board of American Heartland Bank and Trust Company, Sugar Grove and serves as a director of the Illinois Petroleum Resources Board. (term expires January 2005)

### **Jaime Flores - Berwyn, IL**

Jaime Flores is the Midwest Regional Manager for INROADS, Inc., an international career development organization for talented minority youth that coordinates internships for college students with area businesses.

Flores oversees operations in Kansas City, Milwaukee, Minneapolis-St. Paul, and Omaha. In addition, he continues as managing director of the Southwest Michigan affiliate headquarters in Grand Rapids, Michigan.

He is a 1980 graduate of Illinois State University, where he majored in marketing, and a 1981 graduate of the Mexican-North American Institute on Cultural Relations in Mexico City, Mexico.

Mr. Flores is a member of the Hispanic Center of Western Michigan Board of Directors and a former board member of the Grand Rapids Goodwill Industries. (term expires January 2005)

### **Nancy Froelich - Bloomington, IL**

Nancy Froelich is a licensed funeral director. She is a former trustee and chairperson of the Board of Governors, a trustee of the State Universities Retirement Systems and a past member of the Illinois Board of Higher Education. She is currently serving on the Civil Service Merit Board and actively participates in several community and state-wide organizations.

Froelich also served for eight years as chairperson of the McLean County Board and was a member of the Gridley School Board. Among many other community activities, Froelich also served on the executive committee of the McLean County Chamber of Commerce and Economic Development and the Mennonite College of Nursing.

She attended Illinois State University and Illinois Wesleyan University and has a degree from Eastern Illinois University. (term expires January 2005)



**Diane Glenn - Chicago, IL**

Diane Glenn is a board member and trustee of the Wieboldt Foundation, the Lawndale Business and Local Development Corporation, and Sinai Family Health Centers.

Glenn is also director of Black Ensemble Theater and has professional experience in the areas of public relations, fund raising, and special projects.

She attended Illinois State University and received a Bachelor of Science degree in business administration and marketing from Roosevelt University and has completed courses with the American Institute of Banking, Bank Administration Institute and Dunn & Bradstreet. (term expires January 2005)

**Joanne E. Maitland - Bloomington, IL**

Joanne Maitland is a retired Assistant Finance Manager for the City of Bloomington Township. She is presently serving as President of McLean County Board of Health and member of the McLean County Extension Foundation Board. Formerly she served as President of the United Way of McLean County, Board Member of United Way of Illinois, Secretary of the BroMenn Health Care Inc. Board of Directors, Board Member of the Mennonite College of Nursing, Chairman of the Margaret Esposito Scholarship Committee, Chairman of the Ewing Scholarship Committee and served in various other community functions. (term expires January 2007)

**Stanley R. Ommen - Bloomington, IL**

On July 25, 2003, Stanley Ommen was elected to serve as Board secretary. Ommen was appointed to the Board of Trustees by Governor George Ryan in October 2000.

Stan Ommen is president and chief executive officer of State Farm's federal savings bank at the company's corporate headquarters. He spent the first 34 years of his professional life working in the banking industry for Champion Federal Savings & Loan Association, which became First of America Bank in 1993.

He is active in the local community holding such positions as board member and chairman of the ISU Foundation, and board member and vice chairman of the board of the Westminster Village Retirement Facility. He currently is a member of the Federal National Mortgage Association's Midwestern Regional Advisory Board. Mr. Ommen joined State Farm in 1997.

He earned his bachelor's degree in business administration from Illinois State University and his MBA from the University of Illinois. (term expires January 2007)

**Adam W. Ghrist - Student Trustee**

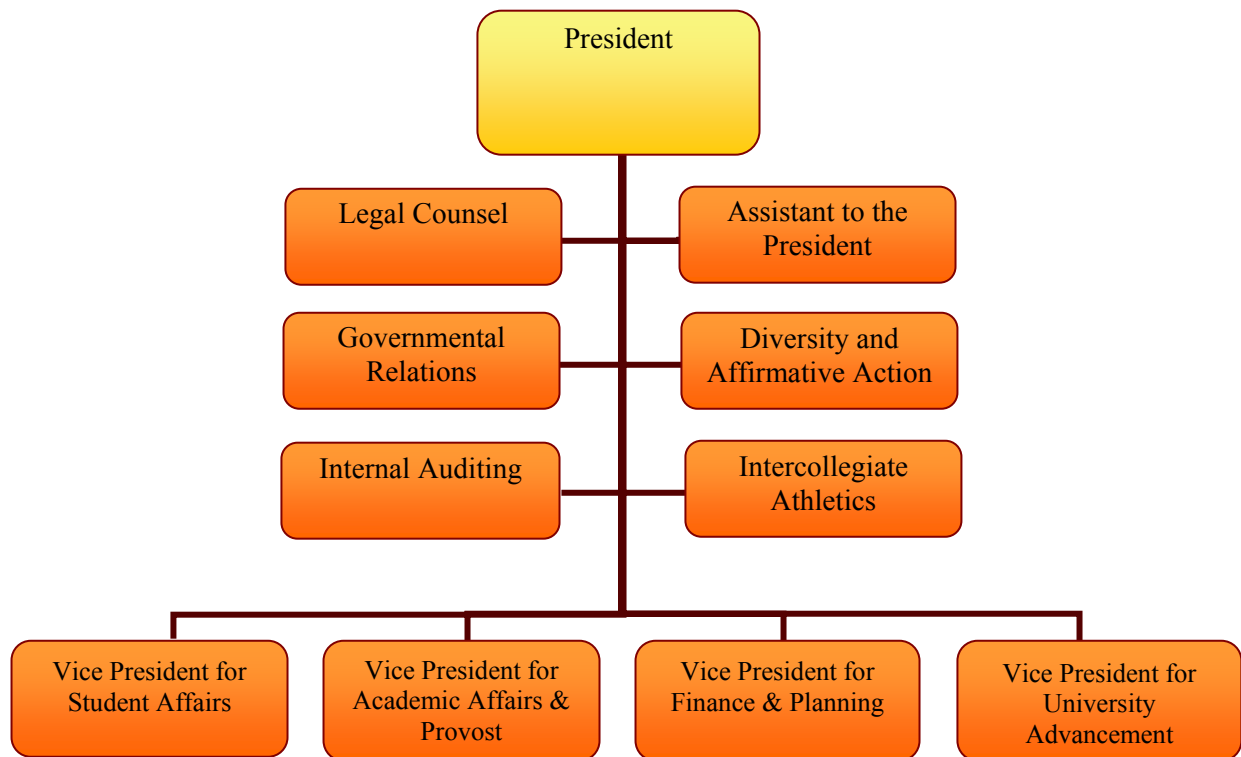
Adam W. Ghrist, a Senior Politics and Government major, is completing courses to graduate in May of 2004 with a concentration in Pre Law. Adam is from Pittsfield, Illinois where he grew up the oldest of four children. Adam has served as an executive officer for Phi Sigma Pi, a National honors fraternity; floor President for his floor in Watterson Towers, a Senator for Student Government Association and Academic Senate, and as a member of multiple committees. Adam is a member of ISU Democrats and served as an intern for United States Senator Richard Durbin. Adam was recently named Captain of the Illinois State's Mock Trial Team. He was awarded All-American honors last year as the Mock Trial team won the National Championship; Adam was awarded an outstanding Attorney Award from the Illinois State Attorney Advisory Counsel, and was a nominee for 2003 Illinois State's Student Leader of the Year Award. (term: July 1, 2003 - June 30, 2004)

### ISU Administration

#### President

C. Alvin Bowman

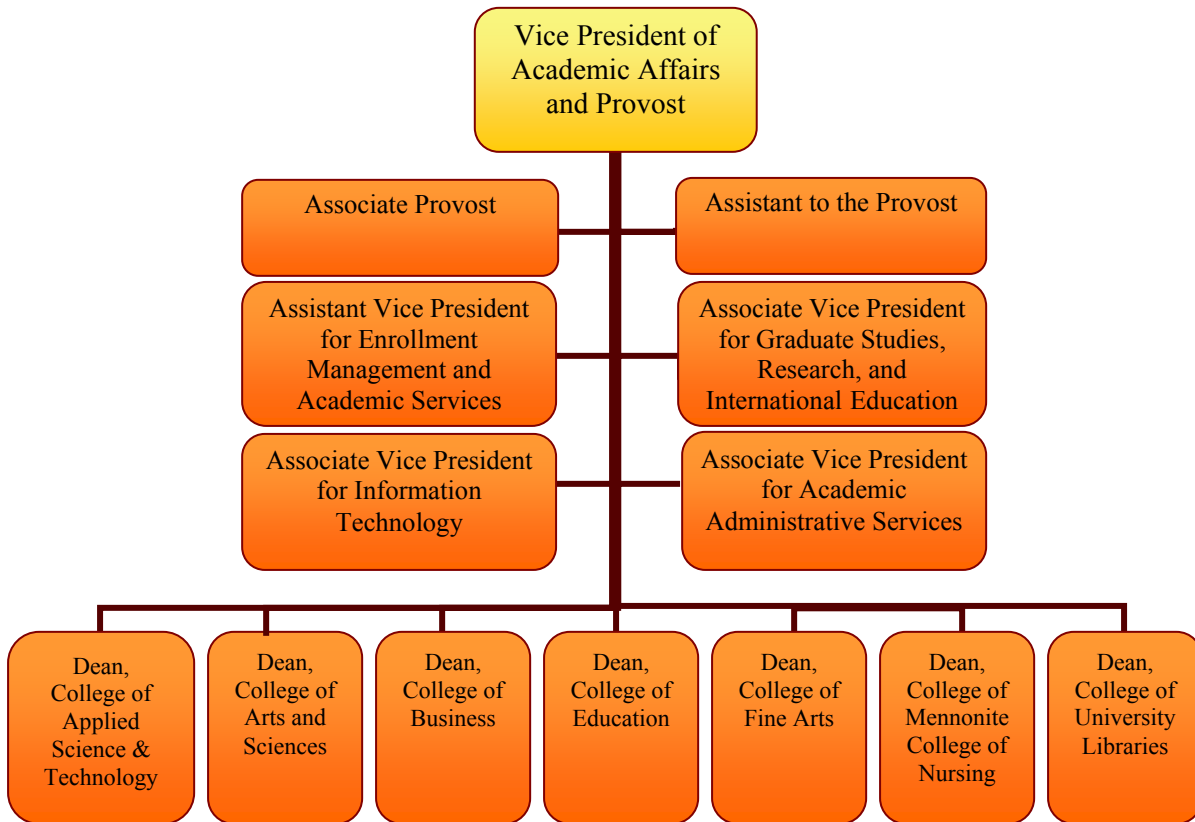
C. Alvin Bowman was appointed Interim President by the Board of Trustees at the February 21, 2003 board meeting. Dr. Bowman joined Illinois State in 1978 as a faculty member in Speech Pathology and Audiology. He was appointed Chairperson of Speech Pathology and Audiology in 1994 and as Interim Provost during the 2002-2003 academic year. Bowman received a bachelor's degree in Speech Pathology from Augustana College in 1975. He earned a master's degree from Eastern Illinois University in 1976, and a Ph.D. in Speech and Hearing Science from University of Illinois. Dr. Bowman is a member of the Chicago Education Alliance and the American Speech-Language-Hearing Association. He served on the board of directors for Chestnut Health Systems and the McLean County Museum of History.



**Vice President for Academic Affairs and Provost**

John W. Presley

John Woodrow Presley was appointed Vice President and Provost effective March 3, 2003. Previously he served as Provost and Vice President of Academic Affairs at the State University of New York-Oswego, Dean of the College of Arts, Science, and Letters at the University of Michigan-Dearborn and Acting Provost and Dean of the Faculty at Lafayette College. He received his Ph.D. in modern British literature in 1975 and his master's degree in English language and literature in 1972 from Southern Illinois University and his bachelor's degree in English from Arkansas State University in 1970.



**Vice President for Finance and Planning**  
Stephen M. Bragg

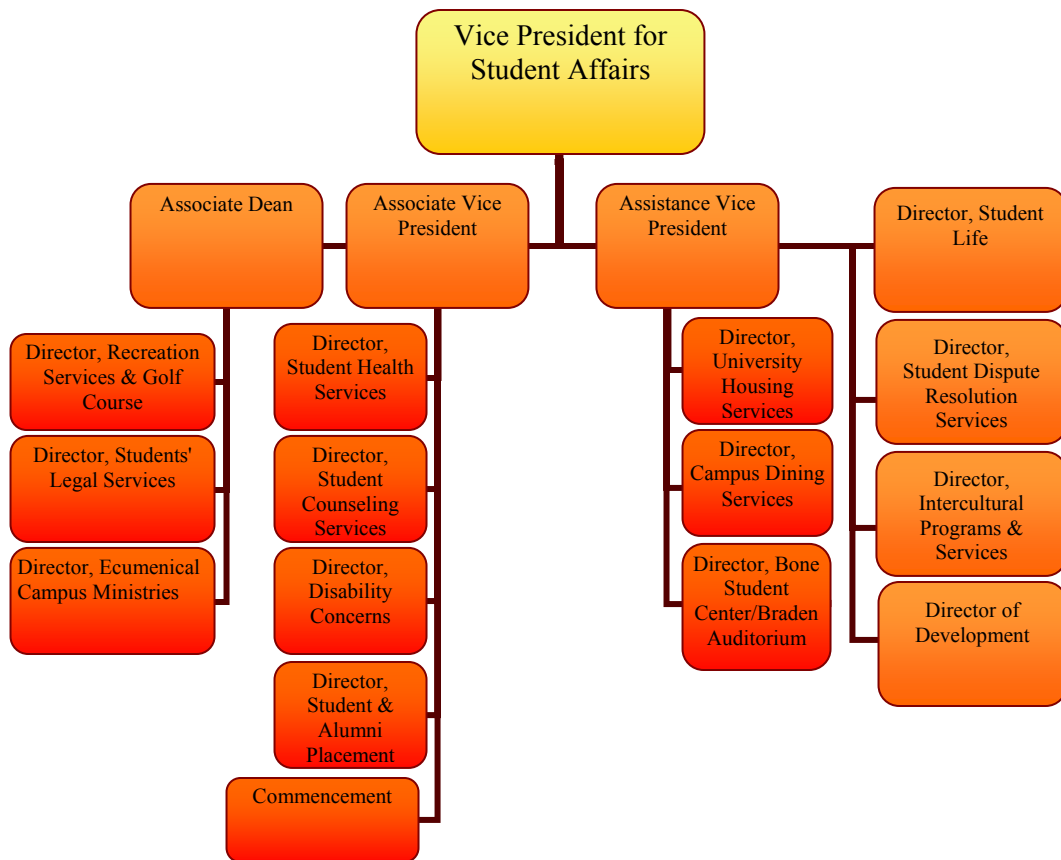
Stephen M. Bragg joined Illinois State University in 1994, serving first as Director of Planning, Policy Studies, and Information Systems, and later as Assistant Vice President for Budget and Planning. Prior to joining Illinois State University, Bragg held staff positions in fiscal affairs, academic affairs, and information systems at the Illinois Board of Higher Education (1981-1994). He also was Assistant Director of the Center for the Study of Higher Education at The Pennsylvania State University (1980-1981). He has a baccalaureate degree from the University of California at Berkeley and master's and doctorate degrees from The Pennsylvania State University.



### Vice President for Student Affairs

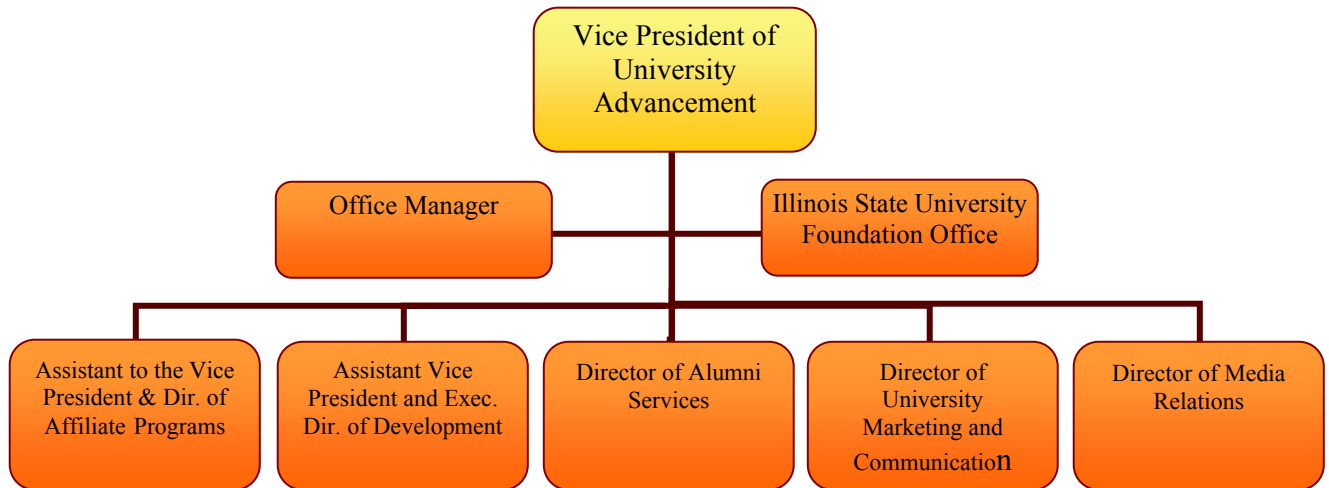
Helen L. Mamarchev

Helen L. Mamarchev became the vice president for Student Affairs on August 1, 2000. Prior to coming to Illinois State University, Dr. Mamarchev was the Associate Vice President for Student Affairs at the University of Florida where she was also an assistant professor in the Department of Counselor Education. She also served as the faculty advisor for the Panhellenic Council, advisor for the Mortar Board and founder/advisor of the Women’s Leadership Conference Committee. Dr. Mamarchev has authored or co-authored 23 publications, including a chapter in *Managing the Political Dimension of Student Affairs*. Dr. Mamarchev received her Ph.D. from the University of Michigan, her M.S. Ed. from Indiana University, and her B.A. from Southern Methodist University. Her name appears in *Who’s Who of American Women* and *Who’s Who and Why of Successful Florida Women*.



**Vice President for University Advancement**  
Susan T. Kern

Susan T. Kern was appointed Vice President for University Advancement for Illinois State University effective July 1, 1998. Her responsibilities encompass the areas of Alumni Services, Development, Media Relations, Community Relations and University Marketing and Communications. She also serves as Executive Director of the Illinois State University Foundation. Kern received her Ph.D. from Purdue University in Housing, Equipment, and Environmental Design before beginning her tenure at Illinois State in 1974 as a faculty member. She subsequently held positions in the Dean’s office in the College of Applied Science and Technology and as the University’s Executive Officer during which time she was responsible for a variety of divisions and programs ranging from Intercollegiate Athletics to the Wellness Program. Kern most recently served as Assistant to the President and Director of Community and Governmental Relations.



**Academic Colleges and Departments**

**J. Robert Rossman ..... Applied Science & Technology**

Agriculture..... Dr. John R. Winter  
 School of Information Technology..... Dr. David L. Doss  
 Criminal Justice Sciences..... Dr. Thomas Ellsworth  
 School of Kinesiology and Recreation..... Dr. Alan C. Lacy  
 Health Sciences..... Dr. Marilyn J. Morrow  
 Family and Consumer Sciences..... Dr. Connor M Walters  
 Technology..... Dr. Rodney L. Custer  
 Military Science..... LTC. Robert Felkel

**Roberta Seelinger Trites..... Arts and Sciences**

Biological Sciences..... Dr. Alan J. Katz  
 Chemistry..... Dr. Frank C. Shaw  
 Economics..... Dr. James Payne  
 English..... Dr. Timothy Hunt  
 Foreign Languages..... Dr. Barbara E. Kurtz  
 Geography-Geology..... Dr. David H. Malone  
 History..... Dr. John B. Freed  
 Communications..... Dr. Larry W. Long  
 Mathematics..... Dr. George F. Seelinger  
 Philosophy..... Dr. James K. Swindler  
 Physics..... Dr. Richard F. Martin  
 Politics and Government..... Dr. Jamal R. Nassar  
 Psychology..... Dr. David P. Barone  
 School of Social Work..... Dr. Richard Grinnell  
 Sociology and Anthropology..... Dr. Nick G. Maroules  
 Speech Pathology and Audiology..... Dr. Walter J. Smoski

**Dixie Mills ..... Business**

Accounting..... Dr. James E. Moon  
 Finance, Insurance, and Law..... Dr. Charles R. McGuire  
 Management & Quantitative Methods..... Dr. John A. Lust  
 Marketing..... Dr. Timothy A. Longfellow

**Dianne E. Ashby ..... Education**

Curriculum and Instruction..... Dr. Albert T. Azinger  
 Educational Admin. & Foundations..... Dr. Patricia H. Klass  
 Special Education..... Dr. James R. Thompson

**John Walker ..... Fine Arts**

School of Art..... Dr. Ronald J. Mottram  
 School of Music..... Dr. James E. Major  
 School of Theatre..... Dr. Donald E. Lacasse

**Nancy Ridenour..... Mennonite College of Nursing**

**Cheryl Elzy ..... University Libraries**

**Academic Calendar**

**Fall 2003**

August 18 ..... Fall Semester Classes Begin  
 September 1 ..... Labor Day Holiday – No Classes  
 October 6 ..... Academic Alerts Mailed  
 October 11 ..... First-half of Fall Semester Ends  
 October 13 ..... Second-half of Fall Semester Begins  
 November 22 ..... Thanksgiving Vacation Begins at 5:30 p.m.  
 December 1 ..... Classes Resume after Thanksgiving Vacation  
 December 6 ..... Last Day of Classes  
 December 8-12 ..... Evaluation Period (finals)  
 December 12 ..... Fall Semester Ends  
 December 13 ..... Commencement  
 December 16 ..... Grade Collection Rosters Due at 9 a.m.

**Spring 2004**

January 9 ..... Residence Halls Re-open at 8 a.m.  
 January 12 ..... Spring Semester Classes Begin  
 January 19 ..... Martin Luther King Holiday – No Classes  
 March 3-14 ..... Spring Break Begins at Noon  
 March 15 ..... Classes Resume after Spring Break  
 May 1 ..... Last Day of Classes  
 May 3-7 ..... Evaluation Period (finals)  
 May 7 ..... Fall Semester Ends  
 May 7-8 ..... Commencement  
 May 11 ..... Grade Collection Rosters Due at 9 a.m.

**Summer 2004**

May 17 ..... Classes Begin  
 May 31 ..... Memorial Day – No Classes  
 July 5 ..... Independence Day – No Classes  
 August 6 ..... Summer Semester Ends

**Fall 2004**

August 23 ..... Fall Semester Classes Begin  
 September 6 ..... Labor Day Holiday – No Classes  
 November 20 ..... Thanksgiving Vacation Begins at 5:30 p.m.  
 November 29 ..... Classes Resume  
 December 11 ..... Last Day of Classes  
 December 13-17 ..... Evaluation Period (finals)  
 December 18 ..... Commencement





# Student Information



## Student Section Overview

All data reported, unless otherwise noted, represent on-campus populations at census date, the 10<sup>th</sup> day of the term. For additional descriptions of the policies, programs, and services mentioned in this overview, consult the Illinois State University homepage, [www.ilstu.edu/](http://www.ilstu.edu/).

- Completed applications from new beginning freshmen applicants increased by 11.1 percent. The ratio of new beginning freshmen acceptances that enrolled at the University remained relatively stable at 41 percent with a 0.4 percent decrease in new freshmen enrollment. The corresponding ratio for new transfer students decreased slightly from 62 to 59 percent in fall 2003. For graduate students the ratio remained constant at 56 percent.
- The mean composite ACT score of fall 2003 new beginning freshmen increased by 0.3 to 23.6 exceeding the mean composite score of both national and state of Illinois college-bound students. The mean high school percentile rank of fall 2003 new beginning freshmen is 67 percent. Eighty-two percent of the new beginning freshmen at Illinois State University are from the top half of their high school graduating class. The Admissions Policies and procedures of the University are summarized at [www.arr.ilstu.edu/admissions/](http://www.arr.ilstu.edu/admissions/).
- Presently, the University enrolls 20,705 on-campus students (18,097 undergraduate and 2,608 graduate) from 48 states and 89 countries. The largest segment of the undergraduate student body, 50 percent, comes from the Chicago area and surrounding collar counties; an additional 24 percent comes from central Illinois. A map of the University's undergraduate and graduate student enrollment for 2002-2003 and 2003-2004 is available at [www.ir.ilstu.edu/facts/current/book/Enrcounty.htm](http://www.ir.ilstu.edu/facts/current/book/Enrcounty.htm).
- During Fiscal Year 2003, Illinois State University awarded 4,987 degrees (4,202 bachelor's and 785 graduate degrees). For native undergraduate students 60 percent graduate within six years.

Completed Applications, Acceptances, and Enrollments<sup>1</sup> for  
 New Beginning Students, New Undergraduate Transfer, and New Graduate Students  
 Fall 1999 through Fall 2003

	Fall <u>1999</u>	Fall <u>2000</u>	Fall <u>2001</u>	Fall <u>2002</u>	Fall <u>2003</u>
<u>New Beginning Students</u>					
Completed Applications	11,049	11,574	10,211	9,070	10,075
Acceptances For Regular Admission	8,251	8,755	7,905	7,382	7,570
Enrollments	3,080	3,265	3,340	3,108	3,097
Ratio of Accepted to Applied	.75	.76	.77	.81	.75
Ratio of Enrolled to Applied	.28	.28	.33	.34	.31
Ratio of Enrolled to Accepted	.37	.37	.42	.42	.41
<u>New Undergraduate Transfers</u> <sup>2</sup>					
Completed Applications	3,216	3,545	3,600	3,340	3,473
Acceptances For Regular Admission	2,873	3,090	3,154	2,990	3,026
Enrollments	1,824	1,841	1,989	1,856	1,772
Ratio of Accepted to Applied	.89	.87	.88	.90	.87
Ratio of Enrolled to Applied	.57	.52	.55	.56	.51
Ratio of Enrolled to Accepted	.63	.60	.63	.62	.59
<u>New Graduate Students</u>					
Completed Applications	1,496	1,350	1,383	1,555	1,613
Acceptances For Regular Admission	1,129	1,055	992	1,137	1,105
Enrollments	671	650	620	636	623
Ratio of Accepted to Applied	.75	.78	.72	.73	.69
Ratio of Enrolled to Applied	.45	.48	.45	.41	.39
Ratio of Enrolled to Accepted	.59	.62	.63	.56	.56
<u>Total</u>					
Completed Applications	15,761	16,469	15,194	13,965	15,161
Acceptances For Regular Admission	12,253	12,900	12,051	11,509	11,701
Enrollments	5,575	5,756	5,949	5,600	5,492
Ratio of Accepted to Applied	.78	.78	.79	.82	.77
Ratio of Enrolled to Applied	.35	.35	.39	.40	.36
Ratio of Enrolled to Accepted	.45	.45	.49	.49	.47

<sup>1</sup> Excludes unclassified students.

<sup>2</sup> Freshmen transfers are counted as transfers.

Undergraduate Completed Applications, Acceptances, and Enrollments  
by Racial/Ethnic Designation  
Fall 1999 through Fall 2003

Completed Applications	New Beginning Students (excludes unclassified)				
	1999	2000	2001	2002	2003
American Indian/Alaskan Native	40	38	20	25	40
Black/Non-Hispanic	1,396	1,339	988	699	819
Asian/Pacific Islander	296	342	277	195	252
Hispanic	396	454	404	331	399
White/Non-Hispanic	8,598	9,039	8,221	7,573	8,215
Not Reported	273	291	238	187	290
Non-Resident Alien	50	71	63	60	60
Total	11,049	11,574	10,211	9,070	10,075
<u>Acceptances</u>					
American Indian/Alaskan Native	22	31	19	17	35
Black/Non-Hispanic	642	671	600	466	598
Asian/Pacific Islander	208	254	200	138	183
Hispanic	262	301	305	261	351
White/Non-Hispanic	6,900	7,266	6,583	6,312	6,198
Not Reported	177	184	150	138	170
Non-Resident Alien	40	48	48	50	35
Total	8,251	8,755	7,905	7,382	7,570
<u>Enrollments</u>					
American Indian/Alaskan Native	7	10	6	5	11
Black/Non-Hispanic	219	210	217	175	248
Asian/Pacific Islander	61	63	52	40	52
Hispanic	78	66	96	97	126
White/Non-Hispanic	2,700	2,899	2,951	2,770	2,645
Not Reported	--	--	--	--	--
Non-Resident Alien	15	17	18	21	15
Total	3,080	3,265	3,340	3,108	3,097
Completed Applications	New Undergraduate Transfers (excludes unclassified)				
	1999	2000	2001	2002	2003
American Indian/Alaskan Native	10	5	13	13	11
Black/Non-Hispanic	211	191	184	142	148
Asian/Pacific Islander	63	76	46	38	43
Hispanic	100	75	111	107	118
White/Non-Hispanic	2,743	3,090	3,136	2,928	3,000
Not Reported	46	64	72	73	102
Non-Resident Alien	43	44	38	39	51
Total	3,216	3,545	3,600	3,340	3,473
<u>Acceptances</u>					
American Indian/Alaskan Native	9	4	11	8	9
Black/Non-Hispanic	153	147	139	112	106
Asian/Pacific Islander	55	69	36	29	36
Hispanic	82	65	92	91	95
White/Non-Hispanic	2,503	2,725	2,788	2,663	2,660
Not Reported	36	42	58	54	77
Non-Resident Alien	35	38	30	33	43
Total	2,873	3,090	3,154	2,990	3,026
<u>Enrollments</u>					
American Indian/Alaskan Native	7	2	4	2	4
Black/Non-Hispanic	81	81	80	71	65
Asian/Pacific Islander	29	30	15	15	18
Hispanic	47	33	54	46	50
White/Non-Hispanic	1,645	1,681	1,816	1,699	1,616
Not Reported	--	--	--	--	--
Non-Resident Alien	15	14	20	23	19
Total	1,824	1,841	1,989	1,856	1,772

American College Testing (ACT) Mean Scores  
Fall 1999 through Fall 2003

Illinois State University - New Beginning Freshmen

<u>Subject Tests and Composite</u>	<u>English</u>	<u>Math</u>	<u>Reading</u>	<u>Science</u>	<u>Composite</u>
1999-2000	22.3	22.1	22.8	22.3	22.5
2000-2001	22.3	22.5	22.9	22.4	22.7
2001-2002	22.4	22.5	23.2	22.7	22.8
2002-2003	23.1	23.0	23.9	22.8	23.3
2003-2004	23.4	23.1	23.9	23.2	23.6
	1999- <u>2000</u>	2000- <u>2001</u>	2001- <u>2002</u>	2002- <u>2003</u>	2003- <u>2004</u>
<u>Composite Scores By College</u>					
Applied Science & Technology	22.3	22.7	22.9	23.3	23.6
Arts & Sciences	23.6	23.6	23.9	24.3	24.6
Business	22.5	22.6	22.6	23.3	23.7
Education	22.3	22.3	22.4	23.0	23.8
Fine Arts	23.0	23.0	23.9	24.2	24.3
Mennonite College of Nursing	21.1	21.5	22.0	22.4	22.7
Other Majors <sup>1</sup>	21.7	22.1	22.0	22.4	22.1
Total	22.5	22.7	22.8	23.3	23.6

College Bound <sup>3</sup> High School Students

<u>National</u>	<u>Number</u>	<u>English</u>	<u>Math</u>	<u>Reading</u>	<u>Science</u>	<u>Composite</u>
1999-2000	1,019,053	20.5	20.7	21.4	21.0	21.0
2000-2001	1,065,138	20.5	20.7	21.4	21.0	21.0
2001-2002	1,069,772	20.5	20.7	21.3	21.0	21.0
2002-2003 <sup>2</sup>	1,116,082	20.2	20.6	21.1	20.8	20.8
2003-2004	1,175,059	20.3	20.6	21.2	20.8	20.8
<u>State of Illinois</u>						
1999-2000	88,026	20.9	21.4	21.6	21.3	21.4
2000-2001	90,450	20.9	21.5	21.7	21.4	21.5
2001-2002	89,311	21.1	21.4	21.8	21.6	21.6
2002-2003 <sup>2</sup>	128,753	19.4	20.2	20.3	20.0	20.1
2003-2004	134,505	19.6	20.2	20.4	20.1	20.2

<sup>1</sup> Includes General Student and General Studies; Excludes Unclassified Students.

<sup>2</sup> Beginning with 2001, Illinois and Colorado required all high school juniors to take the ACT test.

Core curriculum (College Bound) students in Illinois averaged a composite score of 22.4 while nationally core curriculum student's composite score was 21.8.

American College Testing (ACT) Score Distribution  
 Fall 2003 New Beginning Freshmen at Illinois State University

<u>Score</u>	<u>English</u>	<u>Math</u>	<u>Reading</u>	<u>Science Reasoning</u>	<u>Composite</u>	<u>Cum Pct Composite</u>
7	1	--	--	--	--	--
8	--	--	--	--	--	--
9	1	--	--	2	--	--
10	1	--	--	--	--	--
11	5	--	3	--	--	--
12	3	--	5	2	--	--
13	9	1	17	3	1	0.0
14	14	18	25	7	2	0.1
15	31	31	39	15	7	0.3
16	44	102	42	19	31	1.3
17	69	113	72	55	45	2.8
18	113	205	138	100	59	4.7
19	160	185	170	177	88	7.6
20	251	198	192	268	240	15.5
21	280	240	170	374	304	25.4
22	340	258	321	272	358	37.2
23	250	251	232	489	439	51.5
24	272	291	249	270	381	64.0
25	316	275	338	347	325	74.6
26	243	273	203	200	256	83.0
27	157	178	158	134	181	88.9
28	184	135	255	107	143	93.6
29	97	101	119	87	78	96.2
30	105	69	102	55	56	98.0
31	39	48	71	5	29	99.0
32	33	45	55	36	22	99.7
33	21	17	6	--	5	99.8
34	9	13	39	22	3	99.9
35	7	7	20	3	1	100.0
36	--	1	14	6	1	100.0
Missing Scores	42	42	42	42	42	
New Freshmen	3,097	3,097	3,097	3,097	3,097	
Average Score	23.4	23.1	23.9	23.2	23.6	

New Beginning Freshmen Census Day Enrollment  
by ACT Score and High School Percentile Rank  
Fall 2002 and 2003

ACT Score	Fall 2002 Enrollment					
	High School Percentile Rank					
	99-75	74-50	49-25	24-1	NR	Total
NR	5	4	2	--	21	32
1-15	3	1	1	--	--	5
16-17	17	22	8	--	1	48
18-19	62	200	46	7	5	320
20-22	220	468	105	11	20	824
23-25	445	455	207	10	35	1,152
26-29	340	201	61	2	12	616
30-36	83	21	6	--	1	111
Total	1,175	1,372	436	30	95	3,108

ACT Score	Fall 2003 Enrollment					
	High School Percentile Rank					
	99-75	74-50	49-25	24-1	NR	Total
NR	3	9	8	--	22	42
1-15	4	5	--	--	1	10
16-17	29	30	14	1	2	76
18-19	43	66	32	3	3	147
20-22	265	479	123	7	28	902
23-25	437	498	174	7	29	1,145
26-29	379	199	59	7	14	658
30-36	82	21	6	1	7	117
Total	1,242	1,307	416	26	106	3,097

ACT Score	Difference Fall 2003 to Fall 2002					
	High School Percentile Rank					
	99-75	74-50	49-25	24-1	NR	Total
NR	(2)	5	6	--	1	10
1-15	1	4	(1)	--	1	5
16-17	12	8	6	1	1	28
18-19	(19)	(134)	(14)	(4)	(2)	(173)
20-22	45	11	18	(4)	8	78
23-25	(8)	43	(33)	(3)	(6)	(7)
26-29	39	(2)	(2)	5	2	42
30-36	(1)	--	--	1	6	6
Total	67	(65)	(20)	(4)	11	(11)

New Students by Class and Type of Admission  
 Fall 2001 through Fall 2003

	New Beginning <u>Students</u>	4 Yr College <u>Transfer</u>	Community College <u>Transfer</u>	Other College <u>Graduates</u>	ISU College <u>Graduates</u>	<u>Total</u>
<u>Fall 2001</u>						
Freshman	3,334	76	179	--	--	3,589
Sophomore	6	158	534	--	--	698
Junior	--	94	872	--	--	966
Senior	--	18	18	39	1	76
Unclassified	11	21	11	--	--	43
Undergraduate Total	3,351	367	1,614	39	1	5,372
Masters	--	--	--	359	198	557
Certificate	--	--	--	5	2	7
Doctoral	--	--	--	39	17	56
Graduate Total	--	--	--	403	217	620
Total	3,351	367	1,614	442	218	5,992
<u>Fall 2002</u>						
Freshman	3,106	73	137	--	--	3,316
Sophomore	2	130	511	--	--	643
Junior	--	79	852	--	--	931
Senior	--	19	23	31	1	74
Unclassified	26	13	13	--	--	52
Undergraduate Total	3,134	314	1,536	31	1	5,016
Masters	--	--	--	370	217	587
Certificate	--	--	--	8	--	8
Doctoral	--	--	--	29	12	41
Graduate Total	--	--	--	407	229	636
Total	3,134	314	1,536	438	230	5,652
<u>Fall 2003</u>						
Freshman	3,086	67	127	--	--	3,280
Sophomore	10	156	498	--	--	664
Junior	1	116	732	--	--	849
Senior	--	21	14	41	--	76
Unclassified	23	6	8	--	--	37
Undergraduate Total	3,120	366	1,379	41	--	4,906
Masters	--	--	--	380	187	567
Certificate	--	--	--	7	4	11
Doctoral	--	--	--	33	12	45
Graduate Total	--	--	--	420	203	623
Total	3,120	366	1,379	461	203	5,529



Headcount and Full-Time Equivalence (FTE)<sup>1</sup> Enrollment  
 On- and Off-Campus by Class/Level  
 Fall 1999 through Fall 2003

	On-Campus					Off-Campus					Total				
	1999	2000	2001	2002	2003	1999	2000	2001	2002	2003	1999	2000	2001	2002	2003
<b>Freshman</b>															
Headcount	4,384	4,636	4,821	4,563	4,297	--	--	--	--	--	4,384	4,636	4,821	4,563	4,297
FTE	4,133	4,379	4,552	4,320	4,105	--	--	--	--	--	4,133	4,379	4,552	4,320	4,105
<b>Sophomore</b>															
Headcount	3,287	3,285	3,415	3,504	3,466	--	--	--	--	--	3,287	3,285	3,415	3,504	3,466
FTE	3,041	3,087	3,223	3,328	3,304	--	--	--	--	--	3,041	3,087	3,223	3,328	3,304
<b>Junior</b>															
Headcount	4,389	4,456	4,574	4,726	4,726	--	--	--	--	--	4,389	4,456	4,574	4,726	4,726
FTE	3,975	4,020	4,147	4,324	4,346	--	--	--	--	--	3,975	4,020	4,147	4,324	4,346
<b>Senior</b>															
Headcount	5,534	5,582	5,583	5,482	5,546	2	--	--	1	--	5,536	5,582	5,583	5,483	5,546
FTE	4,750	4,780	4,823	4,756	4,810	2	--	--	1	--	4,752	4,780	4,823	4,757	4,810
<b>Unclassified</b>															
Headcount	109	59	79	77	62	--	7	--	--	--	109	66	79	77	62
FTE	44	30	34	37	28	--	1	--	--	--	44	31	34	37	28
<b>Undergraduate Total</b>															
Headcount	17,703	18,018	18,472	18,352	18,097	2	7	--	1	--	17,705	18,025	18,472	18,353	18,097
FTE	15,943	16,296	16,779	16,765	16,593	2	1	--	1	--	15,945	16,297	16,779	16,766	16,593
<b>Masters</b>															
Headcount	2,269	2,166	2,214	2,256	2,218	131	162	113	132	92	2,400	2,328	2,327	2,388	2,310
FTE	1,601	1,579	1,553	1,606	1,640	62	57	45	50	46	1,663	1,636	1,598	1,656	1,686
<b>Certificate</b>															
Headcount	20	22	21	23	31	--	--	--	--	1	20	22	21	23	32
FTE	22	23	23	23	23	--	--	--	--	1	22	23	23	23	24
<b>Doctoral</b>															
Headcount	289	298	328	344	359	56	82	92	75	62	345	380	420	419	421
FTE	172	177	216	230	230	20	42	56	32	37	192	219	272	262	268
<b>Graduate Total</b>															
Headcount	2,578	2,486	2,563	2,623	2,608	187	244	205	207	155	2,765	2,730	2,768	2,830	2,763
FTE	1,796	1,779	1,792	1,859	1,893	82	99	101	82	84	1,878	1,878	1,893	1,941	1,977
<b>Total Enrollment</b>															
Headcount	20,281	20,504	21,035	20,975	20,705	189	251	205	208	155	20,470	20,755	21,240	21,183	20,860
FTE	17,739	18,075	18,571	18,624	18,486	84	100	101	83	84	17,823	18,175	18,672	18,707	18,570

<sup>1</sup> Undergraduate FTE calculated as Credit hours ÷ 15. Graduate FTE calculated as credit hours ÷ 9.

Undergraduate and Graduate Headcount Enrollment  
by College  
Fall 1999 through Fall 2003

	Undergraduate				
	<u>1999</u>	<u>2000</u>	<u>2001</u>	<u>2002</u>	<u>2003</u>
Applied Science and Technology	3,398	3,526	3,527	3,467	3,403
Arts and Sciences	4,653	4,653	4,621	4,841	5,053
Business	3,097	3,034	3,255	3,254	3,055
Education	2,671	2,739	2,896	2,805	2,531
Fine Arts	1,060	1,045	1,005	943	987
Mennonite College of Nursing	278	380	438	461	522
Other Majors <sup>1</sup>	2,546	2,641	2,730	2,581	2,546
Total	17,703	18,018	18,472	18,352	18,097

	Graduate				
	<u>1999</u>	<u>2000</u>	<u>2001</u>	<u>2002</u>	<u>2003</u>
Applied Science and Technology	324	322	365	365	344
Arts and Sciences	830	854	832	893	924
Business	216	203	206	215	230
Education	575	585	597	582	587
Fine Arts	136	140	143	135	137
Mennonite College of Nursing	48	35	28	25	23
Other Majors <sup>1</sup>	449	347	392	408	363
Total	2,578	2,486	2,563	2,623	2,608

	Total				
	<u>1999</u>	<u>2000</u>	<u>2001</u>	<u>2002</u>	<u>2003</u>
Applied Science and Technology	3,722	3,848	3,892	3,832	3,747
Arts and Sciences	5,483	5,507	5,453	5,734	5,977
Business	3,313	3,237	3,461	3,469	3,285
Education	3,246	3,324	3,493	3,387	3,118
Education	1,196	1,185	1,148	1,078	1,124
Fine Arts	326	415	466	486	545
Mennonite College of Nursing	2,995	2,988	3,122	2,989	2,909
Other Majors <sup>1</sup>	20,281	20,504	21,035	20,975	20,705
Total					

<sup>1</sup> Undergraduate Other Majors include General Student, General Studies, and Unclassified; Graduate Other Majors are Students-at-Large.

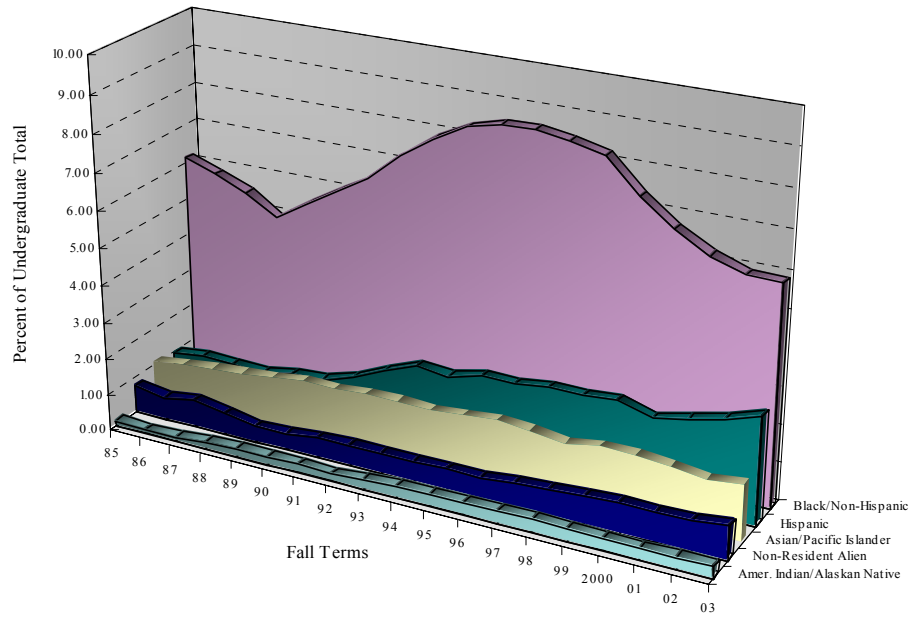
Undergraduate and Graduate Headcount Enrollment  
by Racial/Ethnic Designation  
Fall 1999 through Fall 2003

	Undergraduate									
	1999		2000		2001		2002		2003	
	Number	Percent	Number	Pct	Number	Pct	Number	Pct	Number	Pct
Amer. Indian/Alaskan Native	56	.3	46	.3	53	.3	47	.3	48	.3
Black/Non-Hispanic	1,300	7.3	1,207	6.7	1,149	6.2	1,083	5.9	1,061	5.9
Asian/Pacific Islander	285	1.6	285	1.6	286	1.5	259	1.4	272	1.5
Hispanic	436	2.5	399	2.2	448	2.4	468	2.6	520	2.9
White/Non-Hispanic	15,495	87.5	15,945	88.5	16,392	88.7	16,344	89.1	16,038	88.6
Not Reported	--	.0	--	.0	--	.0	--	.0	--	.0
Non-Resident Alien	131	.7	136	.8	144	.8	151	.8	158	.9
Total	17,703	100.0	18,018	100.0	18,472	100.0	18,352	100.0	18,097	100.0

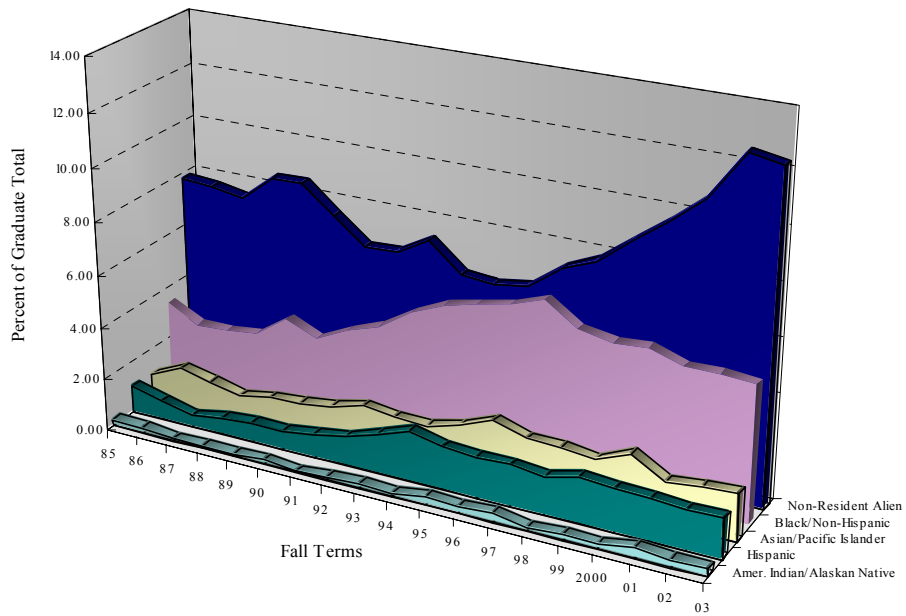
	Graduate									
	1999		2000		2001		2002		2003	
	Number	Percent	Number	Pct	Number	Pct	Number	Pct	Number	Pct
Amer. Indian/Alaskan Native	5	.2	5	.2	10	.4	8	.3	8	.3
Black/Non-Hispanic	142	5.5	139	5.6	134	5.2	136	5.2	132	5.1
Asian/Pacific Islander	46	1.8	57	2.3	40	1.6	45	1.7	46	1.8
Hispanic	45	1.7	40	1.6	40	1.6	39	1.5	38	1.5
White/Non-Hispanic	2,115	82.0	2,003	80.6	2,065	80.6	2,067	78.8	2,064	79.1
Not Reported	--	.0	--	.0	--	.0	--	.0	--	.0
Non-Resident Alien	225	8.7	242	9.7	274	10.7	328	12.5	320	12.3
Total	2,578	100.0	2,486	100.0	2,563	100.0	2,623	100.0	2,608	100.0

	Total									
	1999		2000		2001		2002		2003	
	Number	Percent	Number	Pct	Number	Pct	Number	Pct	Number	Pct
Amer. Indian/Alaskan Native	61	.3	51	.2	63	.3	55	.3	56	.3
Black/Non-Hispanic	1,442	7.1	1,346	6.6	1,283	6.1	1,219	5.8	1,193	5.8
Asian/Pacific Islander	331	1.6	342	1.7	326	1.5	304	1.4	318	1.5
Hispanic	481	2.4	439	2.1	488	2.3	507	2.4	558	2.7
White/Non-Hispanic	17,610	86.8	17,948	87.5	18,457	87.7	18,411	87.8	18,102	87.4
Not Reported	--	.0	--	.0	--	.0	--	.0	--	.0
Non-Resident Alien	356	1.8	378	1.8	418	2.0	479	2.3	478	2.3
Total	20,281	100.0	20,504	100.0	21,035	100.0	20,975	100.0	20,705	100.0

Undergraduate Enrollment by Racial/Ethnic<sup>1</sup> Designation  
Fall Terms 1985 through 2003



Graduate Enrollment by Racial/Ethnic<sup>1</sup> Designation  
Fall Terms 1985 through 2003



<sup>1</sup> White Non-Hispanic Ethnic Group not displayed

Enrollment by Age (as of September 1st) and Gender  
Fall 2003

	Undergraduate Students								
	With 12 Hours or More			With Less than 12 Hours			Total		
	Men	Women	Total	Men	Women	Total	Men	Women	Total
Under 18	15	68	83	6	6	12	21	74	95
18	1,029	1,862	2,891	6	3	9	1,035	1,865	2,900
19	1,108	1,800	2,908	13	14	27	1,121	1,814	2,935
20	1,396	2,275	3,671	39	37	76	1,435	2,312	3,747
21	1,539	2,069	3,608	72	78	150	1,611	2,147	3,758
22	937	886	1,823	104	106	210	1,041	992	2,033
23	397	252	649	87	59	146	484	311	795
24	205	127	332	42	38	80	247	165	412
25	112	68	180	30	24	54	142	92	234
26	90	59	149	25	28	53	115	87	202
27	59	43	102	22	16	38	81	59	140
28	39	28	67	14	20	34	53	48	101
29	30	21	51	14	20	34	44	41	85
30-34	74	66	140	56	71	127	130	137	267
35-39	19	41	60	31	47	78	50	88	138
40-44	11	31	42	20	43	63	31	74	105
45-49	11	25	36	15	45	60	26	70	96
50-54	7	9	16	8	18	26	15	27	42
55-59	2	1	3	1	4	5	3	5	8
60-64	--	--	--	1	3	4	1	3	4
65 & Over	--	--	--	--	--	--	--	--	--
Total	7,080	9,731	16,811	606	680	1,286	7,686	10,411	18,097

	Graduate Students								
	With 9 Hours or More			With Less than 9 Hours			Total		
	Men	Women	Total	Men	Women	Total	Men	Women	Total
Under 18	--	--	--	--	--	--	--	--	--
18	--	--	--	--	--	--	--	--	--
19	--	--	--	--	--	--	--	--	--
20	1	1	2	--	--	--	1	1	2
21	6	22	28	--	3	3	6	25	31
22	58	140	198	4	13	17	62	153	215
23	59	159	218	17	49	66	76	208	284
24	57	70	127	29	56	85	86	126	212
25	52	54	106	27	56	83	79	110	189
26	23	35	58	32	69	101	55	104	159
27	29	29	58	30	60	90	59	89	148
28	18	30	48	28	36	64	46	66	112
29	15	26	41	22	43	65	37	69	106
30-34	59	65	124	118	147	265	177	212	389
35-39	15	37	52	66	98	164	81	135	216
40-44	20	15	35	43	100	143	63	115	178
45-49	9	21	30	35	113	148	44	134	178
50-54	2	11	13	28	79	107	30	90	120
55-59	1	2	3	14	34	48	15	36	51
60-64	1	1	2	3	8	11	4	9	13
65 & Over	--	--	--	1	4	5	1	4	5
Total	425	718	1,143	497	968	1,465	922	1,686	2,608

Undergraduate Census Day Headcount Enrollment  
by College, Department and Major  
Fall 1999 through Fall 2003

<u>College/Department/Major</u>	<u>1999</u>	<u>2000</u>	<u>2001</u>	<u>2002</u>	<u>2003</u>
<b><u>Applied Science and Technology</u></b>					
<b>Agriculture</b>					
Agribusiness	173	182	162	143	124
Agriculture	132	120	119	122	99
<b>School of Information Technology</b>					
Applied Computer Science	788	685	464	344	270
Information Systems	--	75	239	279	241
Telecommunications Management	132	184	198	190	181
<b>Criminal Justice Sciences</b>					
Criminal Justice Sciences	452	410	426	393	417
<b>School of Kinesiology and Recreation</b>					
Physical Education	523	556	545	581	535
Athletic Training	--	--	--	--	44
Recreation & Park Administration	172	150	157	158	182
<b>Health Sciences</b>					
Environmental Health	53	44	51	50	44
Health Education	93	76	93	114	117
Health Information Management	46	49	60	68	61
Clinical Laboratory Science	38	45	42	47	65
Safety	30	36	36	42	43
<b>Family and Consumer Sciences</b>					
Family and Consumer Sciences	336	449	464	482	501
<b>Technology</b>					
Industrial Technology	430	460	457	413	417
Technology Education	--	5	14	41	62
College Total	3,398	3,526	3,527	3,467	3,403
<b><u>Arts and Sciences</u></b>					
<b>Biochemistry/Molecular Biology</b>					
Biochemistry/Molecular Biology	--	3	18	31	63
<b>Biological Sciences</b>					
Biological Sciences	512	469	441	426	416
<b>Chemistry</b>					
Biochemistry/Molecular Biology	--	--	18	25	--
Chemistry	122	153	118	127	135
<b>Communication</b>					
Mass Communication	461	404	382	406	428
Public Relations	318	291	236	257	276
Communication Studies	120	88	99	127	98
<b>Economics</b>					
Economics	73	74	72	97	117
<b>English</b>					
English	501	550	563	576	645
<b>Foreign Languages</b>					
French	28	27	28	25	24
German	9	6	10	8	11
Spanish	72	83	93	108	111
<b>Geography-Geology</b>					
Geography	68	52	53	56	59
Geology	32	26	25	22	31
<b>History</b>					
History	384	375	451	483	455
Social Sciences Education	167	156	183	157	157
<b>Mathematics</b>					
Mathematics	216	247	270	304	383
<b>Philosophy</b>					
Philosophy	34	48	40	37	42
<b>Physics</b>					
Physics	99	116	108	102	109
<b>Politics and Government</b>					
Political Science	250	271	303	332	370

Undergraduate Census Day Headcount Enrollment  
by College, Department and Major  
Fall 1999 through Fall 2003

<u>College/Department/Major</u>	<u>1999</u>	<u>2000</u>	<u>2001</u>	<u>2002</u>	<u>2003</u>
<b>Psychology</b>					
Psychology	482	502	483	506	525
<b>School of Social Work</b>					
Social Work	234	213	199	203	160
<b>Sociology &amp; Anthropology</b>					
Anthropology	46	58	49	65	66
Sociology	234	249	202	168	154
<b>Speech Pathology and Audiology</b>					
Speech Pathology and Audiology	191	192	177	193	218
College Total	4,653	4,653	4,621	4,841	5,053
<b>Business</b>					
<b>Accounting</b>					
Accounting	494	469	513	409	318
Accounting (BS/MPA)	--	--	22	97	137
<b>Finance, Insurance and Law</b>					
Finance	408	391	434	465	475
Insurance	61	42	40	43	31
<b>Management &amp; Quantitative Methods</b>					
Business Administration	1,080	1,111	1,135	1,043	916
Management	230	213	255	318	341
<b>Marketing</b>					
Adm. Systems & Office Technology	--	--	--	--	--
Business Teacher Education	65	64	62	78	94
International Business	192	164	163	174	144
Marketing	567	580	631	627	599
College Total	3,097	3,034	3,255	3,254	3,055
<b>Education</b>					
<b>Curriculum and Instruction</b>					
Early Childhood Education	275	281	319	343	296
Elementary Education	1,515	1,598	1,669	1,518	1,315
Middle Level Teacher Education	162	168	197	238	202
<b>Special Education</b>					
Special Education	719	692	711	706	718
College Total	2,671	2,739	2,896	2,805	2,531
<b>Fine Arts</b>					
<b>Dean of Fine Arts</b>					
Arts Technology	--	1	19	23	21
<b>School of Art</b>					
Art	531	457	424	377	383
Bachelor of Fine Arts-Art	13	24	21	17	16
<b>School of Music</b>					
Music - (BM)	89	85	71	65	62
Music Education	143	138	134	137	145
Music - Liberal Arts	26	47	48	40	55
<b>School of Theatre</b>					
Theatre	258	293	288	284	305
College Total	1,060	1,045	1,005	943	987
<b>Mennonite College of Nursing</b>					
<b>Nursing</b>					
Nursing	278	380	438	461	522
College Total	278	380	438	461	522
<b>Other</b>					
General Student	2,410	2,552	2,637	2,490	2,469
Interdisciplinary Studies	27	30	14	14	14
Unclassified	109	59	79	77	63
Other Total	2,546	2,641	2,730	2,581	2,546
<b>Total</b>	17,703	18,018	18,472	18,352	18,097

Graduate Census Day Headcount Enrollment  
by Level, College, Department and Major  
Fall 1999 through Fall 2003

College/Department/Major	Masters				
	1999	2000	2001	2002	2003
<u>Applied Science and Technology</u>					
<b>Agriculture</b>					
Agribusiness	13	21	29	34	22
<b>School of Information Technology</b>					
Applied Computer Science	73	75	94	88	85
<b>Criminal Justice Sciences</b>					
Criminal Justice Sciences	41	34	35	37	38
<b>School of Kinesiology and Recreation</b>					
Kinesiology & Recreation	111	104	102	93	83
<b>Health Sciences</b>					
Environmental Health & Safety	--	13	30	24	12
<b>Family and Consumer Sciences</b>					
Family and Consumer Sciences	50	47	47	51	58
<b>Technology</b>					
Industrial Technology	36	28	28	20	9
Technology	--	--	--	18	36
Technology Project Management	--	--	--	--	1
College Total	324	322	365	365	344
<u>Arts and Sciences</u>					
<b>Dean of Arts and Sciences</b>					
Women's Studies	--	--	--	1	3
<b>Biological Sciences</b>					
Biological Sciences	65	62	47	56	44
<b>Chemistry</b>					
Chemistry	42	41	36	41	43
<b>Communication</b>					
Communication	98	92	79	79	81
<b>Economics</b>					
Economics	2	--	--	--	--
Applied Economics	29	29	22	25	40
<b>English</b>					
English	49	57	57	63	65
Writing	21	19	19	20	12
<b>Foreign Languages</b>					
Foreign Languages	23	17	30	33	29
<b>Geography-Geology</b>					
Hydrogeology	15	14	10	16	15
<b>History</b>					
History	48	48	45	39	49
<b>Mathematics</b>					
Mathematics	25	17	31	37	32
<b>Politics and Government</b>					
Political Science	62	75	64	45	40
<b>Psychology</b>					
Psychology	91	90	83	79	66
Clinical-Counseling Psych	--	--	--	--	10
<b>School of Social Work</b>					
Social Work	--	20	33	49	60
<b>Sociology and Anthropology</b>					
Sociology	29	32	34	31	33
Historical Archaeology	--	--	--	5	9
<b>Speech Pathology and Audiology</b>					
Speech Pathology and Audiology	94	89	76	91	104
College Total	693	702	666	709	735
<u>Business</u>					
<b>Dean of Business</b>					
Master of Business Administration	191	183	174	177	180
<b>Accounting</b>					
Accounting BS/MPA	25	20	32	29	32
Accounting BS/MPA	--	--	--	9	18
College Total	216	203	206	215	230



Graduate Census Day Headcount Enrollment  
by Level, College, Department and Major  
Fall 1999 through Fall 2003

College/Department/Major	Masters				
	1999	2000	2001	2002	2003
<u>Education</u>					
<b>Curriculum and Instruction</b>					
Curriculum and Instruction	65	83	82	64	64
Reading	111	101	105	108	110
Instructional Technology	--	--	--	5	17
<b>Educational Administration &amp; Foundations</b>					
Educational Administration	108	145	163	164	139
<b>Special Education</b>					
Counselor Education	--	1	--	--	--
Special Education	123	88	64	60	60
College Total	407	418	414	401	390
<u>Fine Arts</u>					
<b>Dean of Fine Arts</b>					
Arts Technology	--	6	13	13	11
<b>School of Art</b>					
Art	23	24	19	15	6
Master of Fine Arts	25	20	18	18	22
<b>School of Music</b>					
Music	40	42	40	47	59
Master of Music Education (MME)	16	11	13	8	6
<b>School of Theatre</b>					
Theatre	6	10	14	11	9
Master of Fine Arts/Theatre (MFA)	25	27	26	23	24
College Total	135	140	143	135	137
<u>Mennonite College of Nursing</u>					
<b>Nursing</b>					
Nursing (MSN)	45	34	28	23	22
<u>Other</u>					
Student-At-Large	449	347	392	407	360
College Total	449	347	392	407	360
<b>Masters Total</b>	2,269	2,166	2,214	2,255	2,218

Arts and Sciences	Certificate				
	1999	2000	2001	2002	2003
<u>Psychology</u>					
School Psychology (S.S.P.)	16	21	20	21	24
<u>Education</u>					
<b>Educational Administration &amp; Foundations</b>					
Educational Administration (C.A.S.)	1	--	1	--	--
Ed Admin General Administration (PMGC)	--	--	--	--	1
Ed Admin Superintendent Endorsement (PMGC)	--	--	--	--	5
<u>Mennonite College of Nursing</u>					
<b>Nursing</b>					
Family Nursing Practitioner Certificate (PM)	3	1	--	2	1
<b>Certificate Total</b>	20	22	21	23	31

Graduate Census Day Headcount Enrollment  
by Level, College, Department and Major  
Fall 1999 through Fall 2003

<u>College/Department/Major</u>	Doctoral				
	<u>1999</u>	<u>2000</u>	<u>2001</u>	<u>2002</u>	<u>2003</u>
<u>Arts and Sciences</u>					
<b>Biological Sciences</b>					
Biological Sciences (Ph.D.)	19	19	29	36	36
<b>English</b>					
English Studies (Ph.D.)	38	48	56	65	79
<b>History</b>					
History (D.A.)	17	9	5	6	1
<b>Mathematics</b>					
Mathematics (D.A.)	--	--	--	1	--
Mathematic Education (Ph.D.)	19	26	25	23	19
<b>Psychology</b>					
School Psychology (Ph.D.)	28	29	31	32	33
College Total	121	131	146	163	168
<u>Education</u>					
<b>Curriculum and Instruction</b>					
Curriculum and Instruction (Ed.D.)	56	67	67	70	68
<b>Educational Administration &amp; Foundations</b>					
Educational Administration (Ed.D. and Ph.D.)	104	89	103	98	110
<b>Special Education</b>					
Special Education (Ed.D.)	7	11	12	13	13
College Total	167	167	182	181	191
<u>Fine Arts</u>					
<b>Art</b>					
Art Education (Ed.D.)	1	--	--	--	--
<b>Doctoral Total</b>	289	298	328	344	359
<b>Graduate Total</b>	2,578	2,486	2,563	2,623	2,608

Undergraduate and Graduate Census Day Headcount Enrollment  
by Gender, College and Department  
Fall 2003

College/Department	Undergraduate		Masters		Certificate		Doctoral	
	Male	Female	Male	Female	Male	Female	Male	Female
<b>Applied Science and Technology</b>								
Agriculture	160	63	17	5	--	--	--	--
School of Information Technology	615	77	55	30	--	--	--	--
Criminal Justice Sciences	257	160	15	23	--	--	--	--
School of Kinesiology and Recreation	420	341	40	43	--	--	--	--
Health Sciences	110	220	9	3	--	--	--	--
Family and Consumer Sciences	16	485	1	57	--	--	--	--
Technology	428	51	33	13	--	--	--	--
College Total	2,006	1,397	170	174	--	--	--	--
<b>Arts and Sciences</b>								
Dean of Arts and Sciences	--	--	--	3	--	--	--	--
Biochemistry/Molecular Biology	34	29	--	--	--	--	--	--
Biological Sciences	180	236	20	24	--	--	20	16
Chemistry	84	51	26	17	--	--	--	--
Communication	263	539	23	58	--	--	--	--
Economics	91	26	20	20	--	--	--	--
English	205	440	27	50	--	--	28	51
Foreign Languages	34	112	4	25	--	--	--	--
Geography-Geology	67	23	8	7	--	--	--	--
History	401	211	30	19	--	--	1	--
Mathematics	186	197	14	18	--	--	5	14
Philosophy	33	9	--	--	--	--	--	--
Physics	96	13	--	--	--	--	--	--
Politics and Government	218	152	20	20	--	--	--	--
Psychology	122	403	18	58	3	21	9	24
School of Social Work	15	145	4	56	--	--	--	--
Sociology & Anthropology	69	151	10	32	--	--	--	--
Speech Pathology and Audiology	5	213	4	100	--	--	--	--
College Total	2,103	2,950	228	507	3	21	63	105
<b>Business</b>								
Dean of Business	--	--	113	67	--	--	--	--
Accounting	228	227	22	28	--	--	--	--
Finance, Insurance and Law	338	168	--	--	--	--	--	--
Management & Quantitative Methods	741	516	--	--	--	--	--	--
Marketing	423	414	--	--	--	--	--	--
College Total	1,730	1,325	135	95	--	--	--	--
<b>Education</b>								
Curriculum and Instruction	125	1,688	26	165	--	--	14	54
Educational Administration	--	--	51	88	4	2	43	67
Special Education	71	647	7	53	--	--	3	10
College Total	196	2,335	84	306	4	2	60	131
<b>Fine Arts</b>								
Dean of Fine Arts	16	5	5	6	--	--	--	--
School of Art	168	231	13	15	--	--	--	--
School of Music	116	146	23	42	--	--	--	--
School of Theatre	128	177	19	14	--	--	--	--
College Total	428	559	60	77	--	--	--	--
<b>Mennonite College of Nursing</b>								
Nursing	26	496	1	21	--	1	--	--
<b>Other</b>								
Dean of Graduate School	--	--	114	246	--	--	--	--
Instructional Development	1,197	1,349	--	--	--	--	--	--
Other Total	1,197	1,349	114	246	--	--	--	--
<b>Total</b>	<b>7,686</b>	<b>10,411</b>	<b>792</b>	<b>1,426</b>	<b>7</b>	<b>24</b>	<b>123</b>	<b>236</b>

Undergraduate Census Day Headcount Enrollment  
by Racial/Ethnic Designation, College, Department and Major  
Fall 2003

College/Department/Major	American Indian/ Alaskan Native	Black/ Non- Hispanic	Asian/ Pacific Islander	Hispanic	White/ Non- Hispanic	Non- Resident Alien	Total
<b>Applied Science and Technology</b>							
<b>Agriculture</b>							
Agribusiness	1	--	--	1	122	--	124
Agriculture	--	1	--	--	98	--	99
<b>School of Information Technology</b>							
Applied Computer Science	1	9	5	5	242	8	270
Information Systems	--	19	6	8	201	7	241
Telecommunications Management	--	7	5	1	163	5	181
<b>Criminal Justice Sciences</b>							
Criminal Justice Sciences	2	22	2	13	376	2	417
<b>School of Kinesiology and Recreation</b>							
Physical Education	1	15	4	21	489	5	535
Recreation & Park Administration	--	12	--	4	166	--	182
Athletic Training	--	1	--	--	43	--	44
<b>Health Sciences</b>							
Environmental Health	--	2	1	--	40	1	44
Health Education	--	9	1	2	104	1	117
Health Information Management	--	10	4	1	45	1	61
Clinical Laboratory Science	--	4	--	5	56	--	65
Safety	--	--	--	1	42	--	43
<b>Family and Consumer Sciences</b>							
Family and Consumer Sciences	--	21	7	8	465	--	501
<b>Technology</b>							
Industrial Technology	1	27	6	6	373	4	417
Technology Education	--	3	--	--	59	--	62
College Total	6	162	41	76	3,084	34	3,403
<b>Arts and Sciences</b>							
<b>Biochemistry/Molecular Biology</b>							
Biochemistry/Molecular Biology	--	4	1	2	55	1	63
<b>Biological Sciences</b>							
Biological Sciences	2	32	12	9	355	6	416
<b>Chemistry</b>							
Chemistry	--	9	3	2	119	2	135
<b>Communication</b>							
Mass Communication	--	29	12	12	359	16	428
Public Relations	2	12	3	5	251	3	276
Communication Studies	--	5	--	2	91	--	98
<b>Economics</b>							
Economics	--	14	4	2	92	5	117
<b>English</b>							
English	--	34	9	21	580	1	645
<b>Foreign Languages</b>							
French	--	2	2	--	20	--	24
German	--	--	--	--	11	--	11
Spanish	--	8	2	17	83	1	111
<b>Geography-Geology</b>							
Geography	--	--	1	2	56	--	59
Geology	1	1	--	1	28	--	31
<b>History</b>							
History	3	10	6	7	429	--	455
Social Sciences Education	--	6	2	2	147	--	157
<b>Mathematics</b>							
Mathematics	2	8	6	22	341	4	383
<b>Philosophy</b>							
Philosophy	--	4	1	--	37	--	42
<b>Physics</b>							
Physics	--	2	1	2	100	4	109

Undergraduate Census Day Headcount Enrollment  
by Racial/Ethnic Designation, College, Department and Major  
Fall 2003

<u>College/Department/Major</u>	<u>American Indian/ Alaskan Native</u>	<u>Black/ Non- Hispanic</u>	<u>Asian/ Pacific Islander</u>	<u>Hispanic</u>	<u>White/ Non- Hispanic</u>	<u>Non- Resident Alien</u>	<u>Total</u>
<b>Politics and Government</b>							
Political Science	4	29	4	10	321	2	370
<b>Psychology</b>							
Psychology	1	33	6	14	470	1	525
<b>School of Social Work</b>							
Social Work	--	13	3	2	142	--	160
<b>Sociology &amp; Anthropology</b>							
Anthropology	--	3	--	2	60	1	66
Sociology	1	13	1	6	132	1	154
<b>Speech Pathology and Audiology</b>							
Speech Pathology and Audiology	--	10	1	8	199	--	218
College Total	16	281	80	150	4,478	48	5,053
<b>Business</b>							
<b>Accounting</b>							
Accounting	--	16	8	6	284	4	318
Accounting (BS/MPA)	--	4	2	3	128	--	137
<b>Finance, Insurance and Law</b>							
Finance	--	31	8	9	420	7	475
Insurance	--	1	2	1	27	--	31
<b>Management &amp; Quantitative Methods</b>							
Business Administration	5	44	15	21	824	7	916
Management	--	17	3	11	307	3	341
<b>Marketing</b>							
Business Teacher Education	--	4	1	--	89	--	94
International Business	--	5	10	13	109	7	144
Marketing	1	23	6	20	545	4	599
College Total	6	145	55	84	2,733	32	3,055
<b>Education</b>							
<b>Curriculum and Instruction</b>							
Early Childhood Education	2	12	2	3	276	1	296
Elementary Education	3	24	18	32	1,238	--	1,315
Middle Level Teacher Education	1	8	2	4	187	--	202
<b>Special Education</b>							
Special Education	3	20	1	12	681	1	718
College Total	9	64	23	51	2,382	2	2,531
<b>Fine Arts</b>							
<b>Dean of Fine Arts</b>							
Arts Technology	--	--	--	1	20	--	21
<b>School of Art</b>							
Art	2	14	5	14	346	2	383
Bachelor of Fine Arts-Art	--	--	--	--	16	--	16
<b>School of Music</b>							
Music - (BM)	1	1	3	2	53	2	62
Music Education	1	4	2	4	134	--	145
Music - Liberal Arts	--	4	2	3	46	--	55
<b>School of Theatre</b>							
Theatre	1	22	2	7	273	--	305
College Total	5	45	14	31	888	4	987
<b>Mennonite College of Nursing</b>							
<b>Nursing</b>							
Nursing	1	33	16	13	456	3	522
College Total	1	33	16	13	456	3	522
<b>Other</b>							
General Student	5	328	42	115	1,962	17	2,469
Interdisciplinary Studies	--	2	--	--	12	--	14
Unclassified	--	1	1	--	43	18	63
Other Total	5	331	43	115	2,017	35	2,546
<b>Undergraduate Total</b>	<b>48</b>	<b>1,061</b>	<b>272</b>	<b>520</b>	<b>16,038</b>	<b>158</b>	<b>18,097</b>

Graduate Census Day Headcount Enrollment by Level  
by Racial/Ethnic Designation, College, Department and Major  
Fall 2003

College/Department/Major	Masters						Total
	American Indian/ Alaskan Native	Black/ Non- Hispanic	Asian/ Pacific Islander	Hispanic	White/ Non- Hispanic	Non- Resident Alien	
<b>Applied Science and Technology</b>							
<b>Agriculture</b>							
Agribusiness	--	--	--	1	8	13	22
<b>School of Information Technology</b>							
Applied Computer Science	--	2	4	1	27	51	85
<b>Criminal Justice Sciences</b>							
Criminal Justice Sciences	--	9	--	1	26	2	38
<b>School of Kinesiology and Recreation</b>							
Kinesiology & Recreation	--	2	--	--	76	5	83
<b>Health Sciences</b>							
Environmental Health & Safety	--	--	--	--	11	1	12
<b>Family and Consumer Sciences</b>							
Family and Consumer Sciences	1	4	--	1	50	2	58
<b>Technology</b>							
Industrial Technology	--	--	1	--	7	1	9
Technology	--	7	1	--	23	5	36
Technology Project Management	--	--	--	--	1	--	1
College Total	1	24	6	4	229	80	344
<b>Arts and Sciences</b>							
<b>Dean of Arts and Sciences</b>							
Women's Studies	--	--	--	--	2	1	3
<b>Biological Sciences</b>							
Biological Sciences	--	--	2	--	33	9	44
<b>Chemistry</b>							
Chemistry	--	3	1	--	32	7	43
<b>Communication</b>							
Communication	--	4	1	1	70	5	81
<b>Economics</b>							
Applied Economics	--	1	--	--	13	26	40
<b>English</b>							
English	1	2	--	1	49	12	65
Writing	--	1	--	1	6	4	12
<b>Foreign Languages</b>							
Foreign Languages	--	1	1	2	20	5	29
<b>Geography-Geology</b>							
Hydrogeology	--	--	--	1	13	1	15
<b>History</b>							
History	--	3	3	4	36	3	49
<b>Mathematics</b>							
Mathematics	--	--	2	--	16	14	32
<b>Politics and Government</b>							
Political Science	--	3	1	1	28	7	40
<b>Psychology</b>							
Psychology	--	4	--	1	59	2	66
Clinical-Counseling Psych	--	--	--	--	10	--	10
<b>School of Social Work</b>							
Social Work	--	7	1	2	49	1	60
<b>Sociology &amp; Anthropology</b>							
Sociology	--	4	--	--	28	1	33
Historical Archeology	--	--	--	--	9	--	9
<b>Speech Pathology and Audiology</b>							
Speech Pathology and Audiology	--	3	2	1	97	1	104
College Total	1	36	14	15	570	99	735

Graduate Census Day Headcount Enrollment by Level  
by Racial/Ethnic Designation, College, Department and Major  
Fall 2003

College/Department/Major	Masters						Total
	American Indian/ Alaskan Native	Black/ Non- Hispanic	Asian/ Pacific Islander	Hispanic	White/ Non- Hispanic	Non- Resident Alien	
<b>Business</b>							
<b>Dean of Business</b>							
Business Administration (MBA)	--	5	3	1	139	32	180
<b>Accounting</b>							
Accounting	--	--	2	--	22	8	32
Accounting BS/MPA	--	--	--	--	18	--	18
College Total	--	5	5	1	179	40	230
<b>Education</b>							
<b>Curriculum and Instruction</b>							
Curriculum & Instruction	--	1	2	--	60	1	64
Reading	--	3	1	--	106	--	110
Instructional Technology	--	1	--	--	14	2	17
<b>Educational Administration and Foundations</b>							
Educational Admin.	1	8	5	2	120	3	139
<b>Special Education</b>							
Special Education	--	1	--	--	59	--	60
College Total	1	14	8	2	359	6	390
<b>Fine Arts</b>							
<b>Dean of Fine Arts</b>							
Arts Technology	1	--	--	--	8	2	11
<b>School of Art</b>							
Art	--	--	--	--	6	--	6
Art (MFA)	--	--	--	--	19	3	22
<b>School of Music</b>							
Music	--	--	1	1	42	15	59
Music Education (MME)	--	--	--	--	6	--	6
<b>School of Theatre</b>							
Theatre	--	--	--	--	9	--	9
Theatre (MFA)	--	--	--	--	22	2	24
College Total	1	--	1	1	112	22	137
<b>Mennonite College of Nursing</b>							
<b>Nursing</b>							
Nursing (MSN)	--	--	--	--	22	--	22
<b>Other</b>							
Student-at-Large	2	26	9	9	310	4	360
College Total	2	26	9	9	310	4	360
<b>Masters Total</b>	6	105	43	32	1,781	251	2,218

College/Department/Major	Certificate						Total
	American Indian/ Alaskan Native	Black/ Non- Hispanic	Asian/ Pacific Islander	Hispanic	White/ Non- Hispanic	Non- Resident Alien	
<b>Arts and Sciences</b>							
<b>Psychology</b>							
School Psychology (S.S.P.)	1	1	--	--	22	--	24
<b>Education</b>							
<b>Educational Administration and Foundation</b>							
Ed Admin/General Administration	--	--	--	--	1	--	1
Ed Admin/ Superintendent Endorsement	--	--	--	--	5	--	5
<b>Mennonite College of Nursing</b>							
<b>Nursing</b>							
Family Nurse Practitioner Certificate	--	--	--	--	1	--	1
<b>Certificate Total</b>	1	1	--	--	29	--	31

Graduate Census Day Headcount Enrollment by Level  
by Racial/Ethnic Designation, College, Department and Major  
Fall 2003

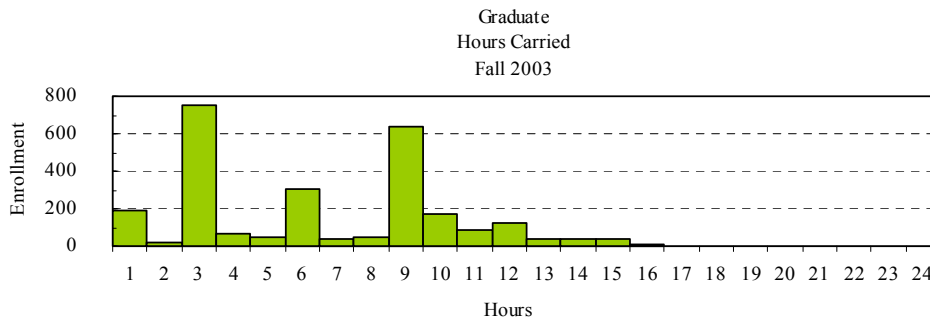
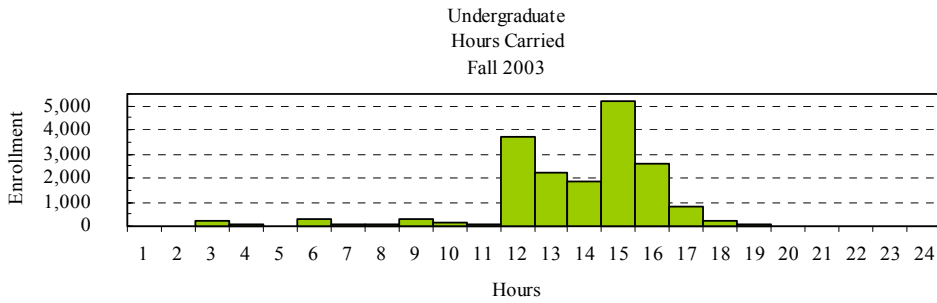
College/Department/Major	Doctoral						Total
	American Indian/ Alaskan Native	Black/ Non- Hispanic	Asian/ Pacific Islander	Hispanic	White/ Non- Hispanic	Non- Resident Alien	
<b>Arts and Sciences</b>							
<b>Biological Sciences</b>							
Biological Sciences (Ph.D.)	--	--	1	--	16	19	36
<b>English</b>							
English Studies (Ph.D.)	--	3	--	1	49	26	79
<b>History</b>							
History (D.A.)	--	1	--	--	--	--	1
<b>Mathematics</b>							
Mathematics (D.A.)	--	--	--	--	--	--	--
Mathematics Education (Ph.D.)	--	2	--	--	11	6	19
<b>Psychology</b>							
School Psychology (Ph.D.)	1	1	1	3	26	1	33
College Total	1	7	2	4	102	52	168
<b>Education</b>							
<b>Curriculum and Instruction</b>							
Curriculum & Instruction (Ed.D)	--	2	--	1	53	12	68
<b>Educational Administration and Foundations</b>							
Educational Admin. (Ed.D. & Ph.D.)	--	17	1	1	88	3	110
<b>Special Education</b>							
Special Education (Ed.D.)	--	--	--	--	11	2	13
College Total	--	19	1	2	152	17	191
<b>Doctoral Total</b>	1	26	3	6	254	69	359
<b>Graduate Total</b>	8	132	46	38	2,064	320	2,608



Census Day On-Campus Enrollment  
by Semester Hours Carried and Illinois Residency  
Fall 2003

Hours <sup>1</sup>	Undergraduate			Graduate			Total		
	Non-			Non-			Non-		
	Resident	Resident	Total	Resident	Resident	Total	Resident	Resident	Total
0	22	--	22	--	--	--	22	--	22
1	11	--	11	160	31	191	171	31	202
2	10	--	10	19	1	20	29	1	30
3	217	4	221	733	15	748	950	19	969
4	58	--	58	57	10	67	115	10	125
5	20	--	20	45	2	47	65	2	67
6	266	--	266	289	20	309	555	20	575
7	100	--	100	30	9	39	130	9	139
8	43	1	44	38	6	44	81	7	88
9	306	1	307	402	232	634	708	233	941
10	127	5	132	93	79	172	220	84	304
11	94	1	95	52	30	82	146	31	177
12	3,678	57	3,735	95	32	127	3,773	89	3,862
13	2,209	28	2,237	21	21	42	2,230	49	2,279
14	1,855	18	1,873	32	7	39	1,887	25	1,912
15	5,179	26	5,205	31	4	35	5,210	30	5,240
16	2,541	29	2,570	3	2	5	2,544	31	2,575
17	808	13	821	3	1	4	811	14	825
18	251	5	256	2	1	3	253	6	259
19	75	--	75	--	--	--	75	--	75
20	22	--	22	--	--	--	22	--	22
21	11	--	11	--	--	--	11	--	11
22	2	--	2	--	--	--	2	--	2
23	2	--	2	--	--	--	2	--	2
24	2	--	2	--	--	--	2	--	2
Total	17,909	188	18,097	2,105	503	2,608	20,014	691	20,705

<sup>1</sup> Hours are rounded up.



Enrollment by Geographic Location  
Fall 2003

Illinois County (by High School address)

County	Under-graduate	Graduate	County	Under-graduate	Graduate	County	Under-graduate	Graduate	County	Under-graduate	Graduate
Adams	79	5	Ford	62	8	Livingston	227	36	Randolph	8	--
Alexander	2	--	Franklin	4	--	Logan	103	35	Richland	4	1
Bond	11	2	Fulton	89	18	Macon	269	68	Rock Island	239	24
Boone	58	4	Gallatin	--	--	Macoupin	51	8	Saline	1	--
Brown	3	--	Greene	9	1	Madison	155	15	Sangamon	427	60
Bureau	152	25	Grundy	191	17	Marion	10	1	Schuyler	10	2
Calhoun	5	--	Hamilton	1	--	Marshall	36	11	Scott	4	--
Carroll	20	4	Hancock	18	3	Mason	40	11	Shelby	36	1
Cass	12	4	Hardin	--	--	Massac	--	--	St. Clair	164	11
Champaign	447	58	Henderson	1	--	McDonough	25	8	Stark	16	6
Christian	55	8	Henry	156	18	McHenry	539	18	Stephenson	55	2
Clark	4	2	Iroquois	98	7	McLean	1,360	633	Tazewell	480	140
Clay	5	--	Jackson	16	--	Menard	34	6	Union	6	--
Clinton	29	2	Jasper	3	2	Mercer	36	5	Vermilion	184	19
Coles	48	4	Jefferson	11	1	Monroe	11	2	Wabash	3	--
Cook	4,152	175	Jersey	20	--	Montgomery	42	3	Warren	30	2
Crawford	4	--	Jo Davies	21	--	Morgan	69	8	Washington	4	2
Cumberland	4	2	Johnson	2	--	Moultrie	11	2	Wayne	2	1
Dekalb	101	6	Kane	703	27	Ogle	85	5	White	3	--
DeWitt	72	29	Kankakee	226	19	Peoria	467	174	Whiteside	108	12
Douglas	38	4	Kendall	111	4	Perry	8	--	Will	999	47
DuPage	1,724	41	Knox	87	14	Piatt	52	12	Williamson	12	1
Edgar	16	1	Lake	943	37	Pike	20	6	Winnebago	328	21
Edwards	--	--	Lasalle	391	57	Pope	--	1	Woodford	283	58
Effingham	64	4	Lawrence	2	1	Pulaski	2	--			
Fayette	9	2	Lee	49	7	Putnam	26	3	<b>Illinois Total</b>	<b>17,412</b>	<b>2,104</b>

State

State	Under-graduate	Graduate	State	Under-graduate	Graduate	State	Under-graduate	Graduate	State	Under-graduate	Graduate
Alabama	6	1	Indiana	43	8	Nevada	3	2	Tennessee	6	4
Alaska	5	2	Iowa	30	10	New Hampshire	--	--	Texas	17	12
Arizona	8	5	Kansas	9	3	New Jersey	2	2	Utah	3	3
Arkansas	3	--	Kentucky	5	2	New Mexico	1	1	Vermont	9	3
California	49	6	Louisiana	4	1	New York	10	13	Virginia	--	1
Colorado	10	4	Maine	2	2	North Carolina	4	1	Washington	6	1
Connecticut	--	2	Maryland	6	2	North Dakota	2	1	West Virginia	--	1
Delaware	1	--	Massachusetts	2	2	Ohio	18	8	Wisconsin	39	8
Dist. of Columbia	--	--	Michigan	33	14	Oklahoma	7	--	Wyoming	1	1
Florida	38	4	Minnesota	13	7	Oregon	2	5	Territories	2	1
Georgia	11	2	Mississippi	3	--	Pennsylvania	8	2	U.S. Foreign	34	11
Hawaii	2	--	Missouri	48	16	Rhode Island	1	1			
Idaho	2	1	Montana	2	1	South Carolina	5	1			
Illinois	17,412	2,104	Nebraska	11	6	South Dakota	1	--	<b>U. S. Total</b>	<b>17,939</b>	<b>2,288</b>

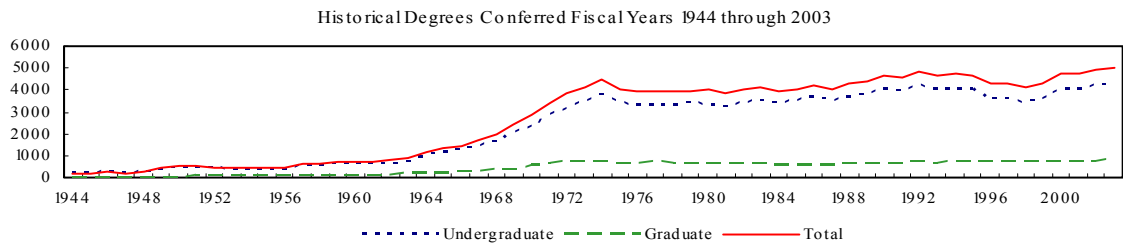
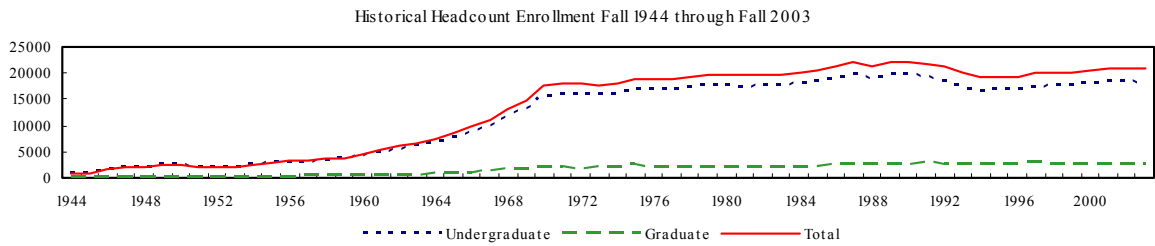
Enrollment by Geographic Location  
Fall 2003

Country

Country	Under-graduate	Graduate	Country	Under-graduate	Graduate	Country	Under-graduate	Graduate	Country	Under-graduate	Graduate
Albania	2	--	Estonia	2	--	Malawi	--	1	Spain	2	--
Algeria	1	--	Ethiopia	--	2	Malaysia	1	3	Sri Lanka	3	1
Armenia	--	1	Finland	--	1	Mauritius	--	2	St Christopher/Nevis	1	--
Australia	2	--	France	4	1	Mexico	2	1	St Vincent & Grenad	--	2
Bangladesh	1	--	Germany	7	4	Morocco	--	1	Sweden	1	1
Barbados	2	1	Germany Fed Rep	1	2	Mozambique	--	2	Switzerland	1	--
Belgium	1	--	Ghana	2	9	Nepal	1	--	Taiwan	1	3
Brazil	1	1	Greece	--	1	Netherlands	1	1	Thailand	--	19
Bulgaria	1	--	Hungary	3	2	Nicaragua	--	1	Trinidad & Tobago	--	1
Byelarus	1	--	India	13	106	Niger	--	--	Turkey	--	2
Cameroon	--	2	Indonesia	3	1	Nigeria	3	2	Ukraine	1	--
Canada	15	6	Iran	2	5	Norway	1	2	United Kingdom	4	2
Chad	--	1	Ireland	1	--	Pakistan	4	2	United States	17,939	2,288
China	5	40	Ivory Coast	1	1	Philippines	1	3	Upper Volta	--	2
Colombia	2	3	Jamaica	--	2	Poland	--	3	USSR	1	--
Congo	1	--	Japan	9	14	Portugal	--	1	Venezuela	1	2
Cyprus	--	1	Jordan	--	1	Romania	--	2	Vietnam	--	1
Czechoslovakia	1	--	Kenya	8	8	Russia	1	8	Yugoslavia	1	1
Dominica	1	--	Korea, South	27	15	Senegal	1	1	Zaire	--	1
Dominican Rep.	1	1	Kuwait	--	1	Sierra Leone	--	1	Zambia	1	2
Ecuador	--	1	Lebanon	1	--	Singapore	--	1	Zimbabwe	1	--
Egypt	--	2	Lithuania	--	1	Slovenia	1	--			
El Salvador	--	1	Madagascar	--	1	South Africa	--	3	<b>Total Enrollment</b>	<b>18,097</b>	<b>2,608</b>

Historical Headcount Enrollment  
Fall 1974 through Fall 2003

	Under-graduate	Graduate	Total		Under-graduate	Graduate	Total		Under-graduate	Graduate	Total
1974	15,991	1,989	17,980	1984	18,050	2,084	20,134	1994	16,516	2,650	19,166
1975	16,755	2,293	19,048	1985	18,253	2,166	20,419	1995	16,663	2,631	19,294
1976	16,890	2,159	19,049	1986	18,991	2,287	21,278	1996	16,763	2,646	19,409
1977	17,002	2,037	19,039	1987	19,597	2,444	22,041	1997	17,366	2,679	20,045
1978	17,191	2,059	19,250	1988	18,997	2,397	21,394	1998	17,518	2,587	20,105
1979	17,605	1,971	19,576	1989	19,803	2,438	22,241	1999	17,703	2,578	20,281
1980	17,625	2,092	19,717	1990	19,651	2,404	22,055	2000	18,018	2,486	20,504
1981	17,392	2,087	19,479	1991	19,098	2,670	21,768	2001	18,472	2,563	21,035
1982	17,821	1,996	19,817	1992	18,467	2,662	21,129	2002	18,352	2,623	20,975
1983	17,715	2,102	19,817	1993	17,404	2,663	20,067	2003	18,097	2,608	20,705



Historical Degrees Conferred  
Fiscal Years 1974 through 2003

	Under-graduate	Graduate	Total		Under-graduate	Graduate	Total		Under-graduate	Graduate	Total
1974	3,765	718	4,483	1984	3,424	550	3,974	1994	4,005	715	4,720
1975	3,378	608	3,986	1985	3,491	558	4,049	1995	3,989	712	4,701
1976	3,328	656	3,984	1986	3,642	548	4,190	1996	3,609	690	4,299
1977	3,293	683	3,976	1987	3,463	558	4,021	1997	3,582	712	4,294
1978	3,320	651	3,971	1988	3,694	621	4,315	1998	3,433	713	4,146
1979	3,361	615	3,976	1989	3,738	634	4,372	1999	3,572	694	4,266
1980	3,326	666	3,992	1990	4,019	658	4,677	2000	4,070	712	4,782
1981	3,190	645	3,835	1991	3,983	598	4,581	2001	4,041	707	4,748
1982	3,363	627	3,990	1992	4,171	705	4,876	2002	4,179	703	4,882
1983	3,514	586	4,100	1993	4,056	625	4,681	2003	4,202	785	4,987

Degrees Conferred by College, Level, Department and Major  
Fiscal Years 1999 through 2002

College/Department/Major	Baccalaureate				
	1999	2000	2001	2002	2003
<b>Applied Science and Technology</b>					
<b>Agriculture</b>					
B.S. in Agribusiness	54	63	65	61	60
B.S. in Agriculture	31	30	41	45	45
<b>School of Information Technology</b>					
B.S. in Applied Computer Science	91	124	142	118	77
B.S. in Telecommunications Management	18	24	35	62	57
B.S. in Information Systems	--	--	--	10	18
<b>Criminal Justice Sciences</b>					
B.A. and B.S. in Criminal Justice Sciences	177	181	171	153	176
<b>School of Kinesiology and Recreation</b>					
B.A. and B.S. in Dance	2	--	--	--	--
B.A., B.S. and B.S.Ed. in Physical Education	101	129	128	109	128
B.S. in Recreation and Park Administration	66	59	65	70	52
<b>Health Sciences</b>					
B.S. in Environmental Health	35	22	22	21	20
B.A., B.S., and B.S.Ed. in Health Education	20	38	34	26	36
B.S. in Health Information Management	20	21	14	13	24
B.S. in Clinical Laboratory Science	15	9	8	11	7
B.S. in Safety	14	19	10	8	11
<b>Family &amp; Consumer Sciences</b>					
B.A. and B.S. in Family and Consumer Sciences	111	118	96	112	120
<b>Technology</b>					
B.S. in Industrial Technology	124	138	140	141	169
B.S. in Technology Education	--	--	--	--	1
College Total	879	975	971	960	1,001
<b>Arts and Sciences</b>					
<b>Biochem/Molecular Biology</b>					
B.S. in Biochem/Molecular Biology	--	--	--	--	--
<b>Biological Sciences</b>					
B.S. in Biological Sciences	75	94	83	80	94
B.S. in Biochem/Molecular Biology	--	--	--	1	2
<b>Chemistry</b>					
B.A. and B.S. in Chemistry	32	24	27	33	20
B.S. in Biochem/Molecular Biology	--	--	4	4	2
<b>Communication</b>					
B.A. and B.S. in Mass Communication	101	134	139	134	93
B.A. and B.S. in Public Relations	109	138	132	96	77
B.A. and B.S. in Communication Studies	37	52	42	27	49
B.A. and B.S. in Library Science	--	--	--	--	--
<b>Economics</b>					
B.A. and B.S. in Economics	29	40	31	26	45
<b>English</b>					
B.A. and B.S. in English	111	119	108	127	125

Degrees Conferred by College, Level, Department and Major  
Fiscal Years 1999 through 2002

<u>College/Department/Major</u>	<u>Baccalaureate</u>				
	<u>1999</u>	<u>2000</u>	<u>2001</u>	<u>2002</u>	<u>2003</u>
<b>Foreign Languages</b>					
B.A. in French	7	9	6	9	6
B.A. in German	6	2	2	1	1
B.A. in Russian Studies	--	1	1	--	--
B.A. in Spanish	22	20	18	13	23
<b>Geography-Geology</b>					
B.A. and B.S. in Geography	11	21	17	21	16
B.S. in Geology	6	14	10	3	12
<b>History</b>					
B.A. and B.S. in History	90	116	92	129	114
B.A. and B.S. in Social Sciences	54	64	41	70	49
<b>Mathematics</b>					
B.A. and B.S. in Mathematics	41	36	34	46	34
<b>Philosophy</b>					
B.A. and B.S. in Philosophy	14	11	9	10	10
<b>Physics</b>					
B.S. in Physics	16	12	14	15	25
<b>Politics and Government</b>					
B.A. and B.S. in Political Science	70	77	83	89	84
<b>Psychology</b>					
B.A. and B.S. in Psychology	147	130	152	139	150
<b>School of Social Work</b>					
B.A. and B.S. in Social Work	101	102	68	83	71
<b>Sociology &amp; Anthropology</b>					
B.A. and B.S. in Anthropology	20	11	14	13	18
B.A. and B.S. in Sociology	85	111	125	98	115
<b>Speech Pathology and Audiology</b>					
B.S. in Speech Pathology and Audiology	55	57	69	42	45
College Total	3,238	3,395	3,322	3,311	3,283
<b><u>Business</u></b>					
<b>Accounting</b>					
B.S. in Accounting	85	79	66	89	63
B.S./M.P.A. Masters of Professional Accountancy	--	--	--	--	8
<b>Finance and Law</b>					
B.S. in Finance	128	158	143	126	146
B.S. in Insurance	14	17	13	16	21
<b>Management &amp; Quantitative Methods</b>					
B.S. in Business Administration	146	184	204	234	240
B.S. in Management	47	62	63	57	71
<b>Marketing</b>					
B.S. in Administrative Systems & Office Technology	1	--	--	--	--
B.A., B.S., and B.S.Ed. in Business Teacher Education	16	9	18	12	11
B.A. and B.S. in International Business	42	33	39	28	31
B.S. in Marketing	123	158	181	194	191
College Total	602	700	727	756	782

Degrees Conferred by College, Level, Department and Major  
Fiscal Years 1999 through 2003

<u>College/Department/Major</u>	<u>Baccalaureate</u>				
	<u>1999</u>	<u>2000</u>	<u>2001</u>	<u>2002</u>	<u>2003</u>
<u>Education</u>					
<b>Curriculum and Instruction</b>					
B.S. and B.S.Ed. in Early Childhood Education	66	67	65	63	97
B.S. and B.S.Ed. in Elementary Education	362	385	414	502	478
B.S. and B.S.Ed. in Jr. High/Middle School Educ.	45	55	44	46	62
<b>Special Education</b>					
B.S. and B.S.Ed. in Special Education	162	195	179	177	175
College Total	635	702	702	788	812
<u>Fine Arts</u>					
<b>Dean of Fine Arts</b>					
B.A. and B.S. in Arts Technology	--	--	1	2	6
<b>School of Art</b>					
B.A. and B.S. in Art	88	99	105	116	96
B.F.A. in Art	7	8	15	14	10
<b>School of Music</b>					
B.M. in Performance	18	10	12	18	7
Bachelor of Music Education	17	16	19	16	23
B.A. and B.S. in Music (Liberal Arts)	6	9	15	11	8
<b>School of Theatre</b>					
B.A. and B.S. in Theatre	47	41	55	57	57
College Total	183	183	222	234	207
<u>Mennonite College of Nursing</u>					
<b>Nursing</b>					
B.S. in Nursing	--	60	50	96	84
College Total	--	60	50	96	84
<u>Other</u>					
B.A. and B.S. in General Studies	34	55	48	36	36
Other Total	34	55	48	36	36
Total	3,572	4,070	4,041	4,179	4,202

Degrees Conferred by College, Level, Department and Major  
Fiscal Years 1999 through 2002

<u>College/Department/Major</u>	Masters				
	<u>1999</u>	<u>2000</u>	<u>2001</u>	<u>2002</u>	<u>2002</u>
<b><u>Applied Science and Technology</u></b>					
<b>Agriculture</b>					
M.S. in Agribusiness	6	4	2	4	8
<b>School of Information Technology</b>					
M.S. in Applied Computer Science	39	40	25	23	28
<b>Criminal Justice Sciences</b>					
M.A. and M.S. in Criminal Justice Sciences	4	4	10	9	9
<b>School of Kinesiology and Recreation</b>					
M.S. in Kinesiology and Recreation	38	63	31	44	41
<b>Health Sciences</b>					
M.S. in Environmental Health & Safety	--	--	--	1	6
<b>Family &amp; Consumer Sciences</b>					
M.A. and M.S. in Family and Consumer Sciences	18	16	20	24	14
<b>Technology</b>					
M.S. in Industrial Technology	15	10	10	11	5
M.S. in Technology	--	--	--	--	6
College Total	120	137	98	116	117
<b><u>Arts and Sciences</u></b>					
<b>Biological Sciences</b>					
M.S. in Biological Sciences	12	19	25	15	16
<b>Chemistry</b>					
M.S. in Chemistry	7	12	7	16	12
<b>Communication</b>					
M.A. and M.S. in Communication	29	34	29	32	25
M.S. and M.S.Ed Instructional Media	--	--	--	--	--
<b>Economics</b>					
M.A. and M.S. in Economics	10	3	--	--	--
M.A. and M.S. in Applied Economics	4	13	9	16	3
<b>English</b>					
M.A. and M.S. in English	32	25	17	36	17
M.A. and M.S. in Writing	5	2	3	3	2
<b>Foreign Languages</b>					
M.A. in Foreign Languages	13	6	5	6	8
<b>Geography-Geology</b>					
M.S. in Hydrogeology	4	4	3	8	7
<b>History</b>					
M.A. and M.S. in History	8	14	13	15	14
<b>Mathematics</b>					
M.A. and M.S. in Mathematics	17	17	8	10	13
<b>Politics and Government</b>					
M.A. and M.S. in Political Science	8	11	14	21	22
<b>Psychology</b>					
M.A. and M.S. in Psychology	36	30	40	30	30
M.A., M.S., and M.S.Ed. in School Psychology	--	--	--	--	--
<b>Social Work</b>					
Master of Social Work	--	--	--	--	22
<b>Sociology &amp; Anthropology</b>					
M.A. and M.S. in Sociology	3	5	6	9	9
<b>Speech Pathology and Audiology</b>					
M.A. and M.S. in Speech Pathology and Audiology	35	32	50	38	34
College Total	223	227	229	255	234



Degrees Conferred by College, Level, Department and Major  
Fiscal Years 1999 through 2003

<u>College/Department/Major</u>	<u>Masters</u>				
	<u>1999</u>	<u>2000</u>	<u>2001</u>	<u>2002</u>	<u>2003</u>
<u>Business</u>					
<b>Accounting</b>					
M.S. in Accounting	10	7	13	4	19
B.S./MPA in Accounting	--	--	--	--	8
<b>Dean of Business</b>					
Master of Business Administration	47	55	72	65	66
College Total	57	62	85	69	93
<u>Education</u>					
<b>Curriculum and Instruction</b>					
Instructional Technology	--	--	--	--	1
M.S. and M.S.Ed. in Curriculum and Instruction	42	19	42	17	51
M.S.Ed. in Reading	50	43	40	31	57
Elementary Education	--	--	--	--	--
<b>Educational Administration &amp; Found.</b>					
M.S. and M.S.Ed. in Educational Administration	60	67	73	64	58
<b>Special Education</b>					
M.S. and M.S.Ed. in Counselor Education	6	--	--	--	--
M.S. and M.S.Ed. in Special Education	36	45	43	30	23
College Total	194	174	198	142	190
<u>Fine Arts</u>					
<b>Dean of Fine Arts</b>					
M.S. in Arts Technology	--	--	2	3	6
<b>School of Art</b>					
M.A. and M.S. in Art	5	3	6	4	6
MFA in Art	6	3	4	10	9
<b>School of Music</b>					
Master of Music	18	18	14	15	16
Master of Music Education	4	6	9	6	4
<b>School of Theatre</b>					
M.A. and M.S. in Theatre	2	3	1	3	10
M.F.A. in Theatre	5	7	11	7	13
College Total	40	40	47	48	64
<u>Mennonite College of Nursing</u>					
<b>Nursing</b>					
M.S. in Nursing	--	17	13	14	12
College Total	--	17	13	14	12
<b>Masters Total</b>	634	657	670	644	710

Degrees Conferred by College, Level, Department and Major  
Fiscal Years 1999 through 2003

College/Department/Major	Certificate				
	1999	2000	2001	2002	2003
<u>Applied Science &amp; Technology</u>					
<b>Technology</b>					
Technology/Project Management (GC) <sup>1</sup>	--	--	--	--	7
Technology (GC) <sup>1</sup>	--	--	--	--	1
Technology/Train & Develop (GC) <sup>1</sup>	--	--	--	--	2
<u>Arts and Sciences</u>					
<b>Dean of Arts and Sciences</b>					
Women's Studies (GC) <sup>1</sup>	--	--	--	--	2
<b>English</b>					
Teaching English Writing High/Mid School (PBC) <sup>2</sup>	--	--	--	--	1
<b>Psychology</b>					
Specialist in School Psychology	8	6	4	6	7
<u>Education</u>					
<b>Educational Administration &amp; Found.</b>					
C.A.S. in Educational Administration	7	4	--	1	--
<u>Mennonite College of Nursing</u>					
<b>Nursing</b>					
P-MST Family Nurse Practitioner Certificate	--	2	1	--	--
<b>Certificate Total</b>	15	12	5	7	20
College/Department/Major	Doctoral				
	1999	2000	2001	2002	2003
<u>Arts and Sciences</u>					
<b>Biological Sciences</b>					
Ph.D. in Biological Sciences	3	4	2	2	2
<b>English</b>					
Ph.D. in English Studies	6	5	2	4	1
<b>History</b>					
D.A. in History	3	6	4	1	3
<b>Mathematics</b>					
D.A. in Mathematics	--	--	--	--	1
Ph.D. in Mathematics Education	2	--	6	4	8
<b>Psychology</b>					
Ph.D. in School Psychology	5	3	2	4	5
College Total	19	18	16	15	20
<u>Education</u>					
<b>Curriculum and Instruction</b>					
Ed.D. in Curriculum and Instruction	2	8	4	9	3
<b>Educational Administration &amp; Found.</b>					
Ed.D. and Ph.D. in Educational Administration	20	16	11	28	28
<b>Special Education</b>					
Ed.D. in Special Education	4	--	1	--	4
College Total	26	24	16	37	35
<u>Fine Arts</u>					
<b>School of Art</b>					
Ed.D. in Art Education	--	1	--	--	--
<b>Doctoral Total</b>	45	43	32	52	55

<sup>1</sup> Graduate Certificate (9-17 hours beyond bachelor's degree). This type program is not approved/reviewed by the IBHE.

<sup>2</sup> Post-baccalaureate Certificate (18 hours beyond bachelor's degree).

Degrees Awarded by College, Level, and Racial/Ethnic Designation  
Fiscal Year 2003

	Amer. Indian/ Alaskan Native		Black Non-Hispanic		Asian/Pacific Islander		Hispanic		Not Reported		White/ Non-Hispanic		Non-Resident Alien		Total	
	M	F	M	F	M	F	M	F	M	F	M	F	M	F	M	F
<u>Baccalaureate</u>																
Applied Science & Technology	--	1	31	34	11	4	13	12	--	--	524	364	4	3	583	418
Arts and Sciences	4	--	27	68	4	13	16	19	1	1	477	646	1	3	530	750
Business	--	1	19	31	2	6	7	8	--	--	388	305	8	7	424	358
Education	--	1	2	14	2	7	2	18	--	--	54	712	--	--	60	752
Fine Arts	--	2	1	9	1	3	5	3	--	--	92	91	--	--	99	108
Mennonite College of Nursing	--	--	--	6	--	2	--	--	--	--	3	73	--	--	3	81
Other	--	--	4	4	--	--	--	--	--	--	7	21	--	--	11	25
Total	4	5	84	166	20	35	43	60	1	1	1,545	2,212	13	13	1,710	2,492
<u>Masters</u>																
Applied Science & Technology	--	--	2	2	--	--	--	1	--	--	34	49	16	13	52	65
Arts and Sciences	--	--	6	10	1	3	1	2	--	--	53	135	14	9	75	159
Business	--	--	1	2	2	1	--	1	--	--	44	26	9	7	56	37
Education	--	--	2	3	2	--	--	--	--	--	41	138	2	2	47	143
Fine Arts	--	--	3	--	--	--	--	1	--	--	25	28	2	5	30	34
Mennonite College of Nursing	--	--	--	--	--	--	--	--	--	--	--	12	--	--	--	12
Total	--	--	14	17	5	4	1	5	--	--	197	388	43	36	260	450
<u>Certificate</u>																
Applied Science & Technology	--	--	--	--	--	1	--	--	--	--	8	--	1	--	9	1
Arts and Sciences	--	--	--	1	--	1	--	--	--	--	1	7	--	--	1	9
Education	--	--	--	--	--	--	--	--	--	--	--	--	--	--	--	--
Mennonite College of Nursing	--	--	--	--	--	--	--	--	--	--	--	--	--	--	--	--
Total	--	--	--	1	--	2	--	--	--	--	9	7	1	--	10	10
<u>Doctorate</u>																
Arts and Sciences	--	--	--	1	--	--	--	--	--	--	7	10	2	--	9	11
Education	--	--	1	2	--	--	1	--	--	--	6	6	6	13	14	21
Fine Arts	--	--	--	--	--	--	--	--	--	--	--	--	--	--	--	--
Total	--	--	1	3	--	--	1	--	--	--	13	16	8	13	23	32
<u>Total Degrees</u>																
Applied Science & Technology	--	1	33	36	11	5	13	13	--	--	566	413	21	16	644	484
Arts and Sciences	4	--	33	80	5	17	17	21	1	1	538	798	17	12	615	929
Business	--	1	20	33	4	7	7	9	--	--	432	331	17	14	480	395
Education	--	1	5	19	4	7	3	18	--	--	101	856	8	15	121	916
Fine Arts	--	2	4	9	1	3	5	4	--	--	117	119	2	5	129	142
Mennonite College of Nursing	--	--	--	6	--	2	--	--	--	--	3	85	--	--	3	93
Other	--	--	4	4	--	--	--	--	--	--	7	21	--	--	11	25
Total	4	5	99	187	25	41	45	65	1	1	1,764	2,623	65	62	2,003	2,984

**Persistence of Freshmen Cohorts by Elapsed Sessions (1<sup>st</sup> through 6<sup>th</sup> year)  
Academic Years 1997 through 2003  
By Racial/Ethnic Designation**

The two-year persistence rate of new freshmen cohorts has risen in recent years from a low of 73 percent in the 1994 cohort to a high of 83 percent for the 2002 cohort. Black/Non-Hispanic cohorts have evidenced a similar rise, although the overall second year return rate for Black-Non-Hispanic cohorts is lower, than the all student rate, at 71 percent.

**Freshman Fall Cohort - All Students**

<i>Initial Population</i>		<u>1997</u>	<u>1998</u>	<u>1999</u>	<u>2000</u>	<u>2001</u>	<u>2002</u>	<u>2003</u>
1	Fall	3,272	2,749	3,080	3,265	3,340	3,108	3,097
	Spring	93.3	94.1	94.2	93.1	93.3	94.3	-
2	Fall	75.9	78.6	78.8	79.5	79.7	82.6	-
	Spring	70.6	73.0	73.2	75.2	75.5	-	-
3	Fall	66.5	68.6	69.4	71.6	71.6	-	-
	Spring	64.9	67.1	67.9	70.4	-	-	-
4	Fall	63.8	66.0	66.7	68.1	-	-	-
	Spring	61.0	63.9	64.6	-	-	-	-
5	Fall	30.0	29.8	28.5	-	-	-	-
	Spring	17.3	17.2	-	-	-	-	-
6	Fall	5.0	4.9	-	-	-	-	-
	Spring	2.7	-	-	-	-	-	-

**Freshman Fall Cohort - Black Non-Hispanic Students**

<i>Initial Population</i>		<u>1997</u>	<u>1998</u>	<u>1999</u>	<u>2000</u>	<u>2001</u>	<u>2002</u>	<u>2003</u>
1	Fall	355	314	219	210	217	175	248
	Spring	93.8	95.2	95.0	93.8	95.4	98.3	-
2	Fall	68.2	65.0	68.5	70.0	66.8	71.4	-
	Spring	59.7	55.4	56.6	67.6	61.8	-	-
3	Fall	53.8	48.4	49.8	63.8	56.7	-	-
	Spring	52.1	47.5	47.0	61.4	-	-	-
4	Fall	51.0	47.1	47.5	59.0	-	-	-
	Spring	49.9	47.1	45.7	-	-	-	-
5	Fall	32.7	30.9	27.4	-	-	-	-
	Spring	23.1	18.8	-	-	-	-	-
6	Fall	6.8	7.6	-	-	-	-	-
	Spring	3.7	-	-	-	-	-	-

**Freshman Fall Cohort - Hispanic Students**

<i>Initial Population</i>		<u>1997</u>	<u>1998</u>	<u>1999</u>	<u>2000</u>	<u>2001</u>	<u>2002</u>	<u>2003</u>
1	Fall	99	80	78	66	96	97	126
	Spring	91.9	91.3	93.6	95.5	96.9	95.9	-
2	Fall	65.7	71.3	65.4	77.3	77.1	75.3	-
	Spring	59.6	58.8	57.7	68.2	71.9	-	-
3	Fall	52.5	55.0	46.2	62.1	64.6	-	-
	Spring	49.5	50.0	43.6	56.1	-	-	-
4	Fall	48.5	46.3	44.9	57.6	-	-	-
	Spring	47.5	46.3	44.9	-	-	-	-
5	Fall	29.3	30.0	25.6	-	-	-	-
	Spring	19.2	20.0	-	-	-	-	-
6	Fall	6.1	5.0	-	-	-	-	-
	Spring	4.0	-	-	-	-	-	-

**Persistence of Freshmen Cohorts by Elapsed Sessions (1<sup>st</sup> through 6<sup>th</sup> year)  
Academic Years 1997 through 2003  
By Gender**

		<b>Freshman Fall Cohort - All Male Students</b>						
<i>Initial Population</i>		<u>1997</u>	<u>1998</u>	<u>1999</u>	<u>2000</u>	<u>2001</u>	<u>2002</u>	<u>2003</u>
1	Fall	1,281	1,016	1,169	1,260	1,255	1,169	1,160
	Spring	94.0	94.5	94.2	93.5	93.5	94.4	-
2	Fall	73.5	77.6	76.7	77.1	77.1	82.7	-
	Spring	66.5	71.5	69.7	72.9	72.2	-	-
3	Fall	62.4	66.7	64.8	69.0	68.0	-	-
	Spring	59.4	65.6	63.5	68.2	-	-	-
4	Fall	58.7	64.1	63.1	65.9	-	-	-
	Spring	56.8	62.4	61.2	-	-	-	-
5	Fall	33.3	34.8	34.6	-	-	-	-
	Spring	21.3	22.1	-	-	-	-	-
6	Fall	6.7	7.6	-	-	-	-	-
	Spring	4.0	-	-	-	-	-	-

		<b>Freshman Fall Cohort - All Female Students</b>						
<i>Initial Population</i>		<u>1997</u>	<u>1998</u>	<u>1999</u>	<u>2000</u>	<u>2001</u>	<u>2002</u>	<u>2003</u>
1	Fall	1,991	1,733	1,911	2,005	2,085	1,939	1,937
	Spring	92.9	93.9	94.1	92.9	93.2	94.2	-
2	Fall	77.4	79.3	80.0	81.0	81.2	82.5	-
	Spring	73.3	73.9	75.4	76.7	77.5	-	-
3	Fall	69.2	69.8	72.3	73.2	73.7	-	-
	Spring	68.4	68.0	70.6	71.8	-	-	-
4	Fall	67.1	67.1	68.9	69.4	-	-	-
	Spring	63.7	64.8	66.6	-	-	-	-
5	Fall	27.9	26.8	24.8	-	-	-	-
	Spring	14.8	14.3	-	-	-	-	-
6	Fall	3.8	3.4	-	-	-	-	-
	Spring	1.9	-	-	-	-	-	-

**Graduation Rates of Freshmen Cohorts by Elapsed Sessions (3<sup>rd</sup> year through 6<sup>th</sup> year)  
Academic Years 1994 through 2003  
By Racial/Ethnic Designation**

The most recent six-year graduation rate for new freshmen cohorts (1997) has risen to 60 percent of entering students. The fall 1997 Black/Non-Hispanic new freshmen cohort has shown the highest six-year graduation rate in recent years at 46 percent. For native undergraduate students who graduate from Illinois State University 52 percent finish their degree in four years. An additional 40 percent graduate in the fifth year and 8 percent graduate in the sixth year.

**Cumulative Percent**

		Freshman Fall Cohort - All Students									
		<u>1994</u>	<u>1995</u>	<u>1996</u>	<u>1997</u>	<u>1998</u>	<u>1999</u>	<u>2000</u>	<u>2001</u>	<u>2002</u>	<u>2003</u>
<i>Initial Population</i>		2,400	2,967	2,896	3,272	2,749	3,080	3,265	3,340	3,108	3,097
3	Summer	0.4	0.5	0.3	0.3	0.3	0.2	0.1	-	-	-
	Fall	1.3	1.9	2.0	1.9	1.4	1.3	-	-	-	-
	Spring	22.5	23.1	24.8	25.4	28.8	31.0	-	-	-	-
4	Summer	27.5	28.9	30.4	31.1	34.4	36.1	-	-	-	-
	Fall	37.9	39.9	41.5	43.1	46.2	-	-	-	-	-
	Spring	48.0	49.2	50.9	53.5	56.9	-	-	-	-	-
5	Summer	50.3	51.2	52.9	55.5	58.5	-	-	-	-	-
	Fall	52.5	53.3	55.4	57.9	-	-	-	-	-	-
	Spring	54.1	55.1	56.9	59.6	-	-	-	-	-	-
6	Summer	54.5	55.6	57.2	60.3	-	-	-	-	-	-

		Freshman Fall Cohort - Black Non-Hispanic Students									
		<u>1994</u>	<u>1995</u>	<u>1996</u>	<u>1997</u>	<u>1998</u>	<u>1999</u>	<u>2000</u>	<u>2001</u>	<u>2002</u>	<u>2003</u>
<i>Initial Population</i>		308	355	325	355	314	219	210	217	175	248
3	Summer	-	-	-	-	-	-	-	-	-	-
	Fall	-	0.6	-	-	-	0.9	-	-	-	-
	Spring	6.5	7.6	10.2	11.5	9.9	14.2	-	-	-	-
4	Summer	10.1	11.8	14.2	15.8	14.6	18.3	-	-	-	-
	Fall	16.6	17.5	22.8	23.7	23.6	-	-	-	-	-
	Spring	26.9	26.5	28.6	37.2	33.4	-	-	-	-	-
5	Summer	30.2	27.9	31.7	40.8	35.4	-	-	-	-	-
	Fall	32.5	32.1	34.5	43.4	-	-	-	-	-	-
	Spring	35.7	34.4	36.3	45.4	-	-	-	-	-	-
6	Summer	36.7	34.9	36.6	46.2	-	-	-	-	-	-

		Freshman Fall Cohort - Hispanic Students									
		<u>1994</u>	<u>1995</u>	<u>1996</u>	<u>1997</u>	<u>1998</u>	<u>1999</u>	<u>2000</u>	<u>2001</u>	<u>2002</u>	<u>2003</u>
<i>Initial Population</i>		54	74	79	99	80	78	66	96	97	126
3	Summer	-	2.7	-	-	-	-	-	-	-	-
	Fall	-	2.7	2.5	1.0	-	-	-	-	-	-
	Spring	16.7	10.8	11.4	12.1	8.8	10.3	-	-	-	-
4	Summer	25.9	21.6	17.7	16.2	12.5	14.1	-	-	-	-
	Fall	31.5	31.1	25.3	26.3	23.8	-	-	-	-	-
	Spring	40.7	37.8	34.2	36.4	37.5	-	-	-	-	-
5	Summer	48.1	40.5	36.7	37.4	37.5	-	-	-	-	-
	Fall	50.0	43.2	38.0	39.4	-	-	-	-	-	-
	Spring	50.0	44.6	39.2	42.4	-	-	-	-	-	-
6	Summer	50.0	44.6	39.2	42.4	-	-	-	-	-	-

**Graduation Rates of Freshmen Cohorts by Elapsed Sessions (3<sup>rd</sup> year through 6<sup>th</sup> year)  
Academic Years 1994 through 2003  
By Gender**

**Cumulative Percent**

		Freshman Fall Cohort - All Male Students									
<i>Initial Population</i>		<u>1994</u>	<u>1995</u>	<u>1996</u>	<u>1997</u>	<u>1998</u>	<u>1999</u>	<u>2000</u>	<u>2001</u>	<u>2002</u>	<u>2003</u>
		964	1163	1099	1,281	1,016	1,169	1,260	1,255	1,169	1,160
3	Summer	0.5	0.4	0.2	0.1	-	0.3	0.2	-	-	-
4	Fall	1.0	1.3	0.7	1.3	0.5	1.1	-	-	-	-
	Spring	16.5	16.2	16.6	18.2	22.0	21.8	-	-	-	-
	Summer	21.3	21.4	22.4	23.2	27.2	26.4	-	-	-	-
5	Fall	29.9	31.5	33.3	34.1	38.6	-	-	-	-	-
	Spring	41.3	42.0	44.9	45.7	50.7	-	-	-	-	-
	Summer	44.5	44.7	47.4	48.2	52.3	-	-	-	-	-
6	Fall	47.4	46.9	51.0	51.4	-	-	-	-	-	-
	Spring	49.4	49.1	53.1	53.5	-	-	-	-	-	-
	Summer	50.2	49.9	53.4	54.2	-	-	-	-	-	-

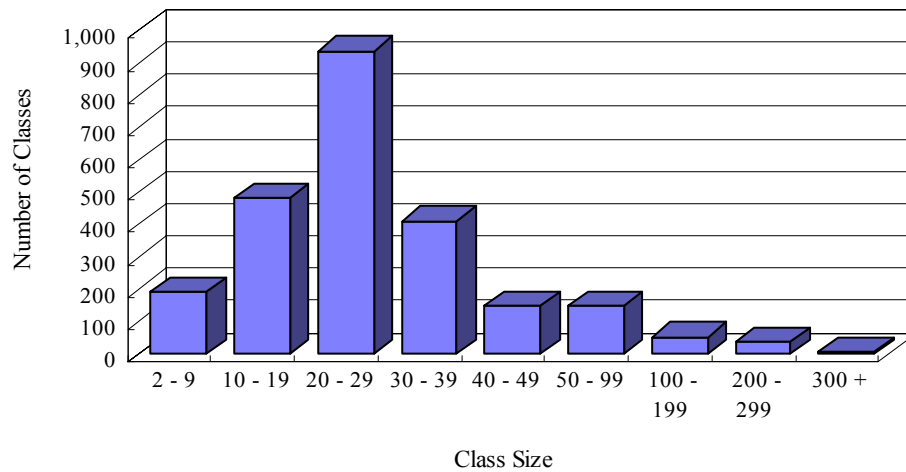
**Cumulative Percent**

		Freshman Fall Cohort - All Female Students									
<i>Initial Population</i>		<u>1994</u>	<u>1995</u>	<u>1996</u>	<u>1997</u>	<u>1998</u>	<u>1999</u>	<u>2000</u>	<u>2001</u>	<u>2002</u>	<u>2003</u>
		1436	1804	1797	1,991	1,733	1,911	2,005	2,085	1,939	1,937
3	Summer	0.3	0.6	0.4	0.5	0.5	0.2	0.1	-	-	-
	Fall	1.4	2.3	2.7	2.2	2.0	1.4	-	-	-	-
	Spring	26.5	27.6	29.8	30.0	32.8	36.6	-	-	-	-
4	Summer	31.6	33.8	35.2	36.2	38.7	42.0	-	-	-	-
	Fall	43.3	45.3	46.5	48.9	50.7	-	-	-	-	-
	Spring	52.4	53.8	54.6	58.5	60.5	-	-	-	-	-
5	Summer	54.2	55.3	56.2	60.2	62.1	-	-	-	-	-
	Fall	55.9	57.4	58.0	62.0	-	-	-	-	-	-
	Spring	57.3	58.9	59.2	63.5	-	-	-	-	-	-
6	Summer	57.5	59.3	59.5	64.3	-	-	-	-	-	-

Class Size Distribution<sup>1</sup> for Courses with Undergraduate Students  
Fall 2000 through Fall 2003

Class Size	Fall 2000			Fall 2001			Fall 2002			Fall 2003		
	N	Pct.	Cum. Pct.	N	Pct.	Cum. Pct.	N	Pct.	Cum. Pct.	N	Pct.	Cum. Pct.
2 - 9	216	8.4	8.4	221	8.5	8.5	233	9.3	9.3	194	8.0	8.0
10 - 19	597	23.2	31.6	548	21.1	29.6	499	19.9	29.3	486	19.9	27.9
20 - 29	850	33.1	64.7	967	37.2	66.8	903	36.1	65.3	940	38.6	66.4
30 - 39	547	21.3	86.0	469	18.1	84.9	451	18.0	83.4	414	17.0	83.4
40 - 49	153	6.0	91.9	154	5.9	90.8	146	5.8	89.2	151	6.2	89.6
50 - 99	124	4.8	96.7	146	5.6	96.4	162	6.5	95.7	151	6.2	95.8
100 - 199	48	1.9	98.6	57	2.2	98.6	71	2.8	98.5	55	2.3	98.1
200 - 299	29	1.1	99.7	29	1.1	99.7	33	1.3	99.8	39	1.6	99.7
300 +	7	0.3	100.0	7	0.3	100.0	4	0.2	100.0	8	0.3	100.0
Total	2,571	100.0	100.0	2,598	100.0	100.0	2,502	100.0	100.0	2,438	100.0	100.0

Class Size Distribution<sup>1</sup> Fall 2003



<sup>1</sup> Breakdowns are based on *U.S. News and World Report* definition.



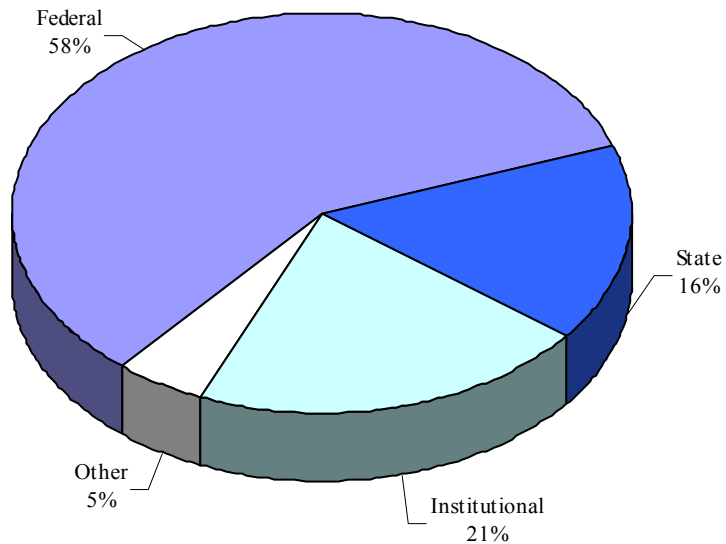
Student Financial Aid - Fiscal Year 2003

Approximately 77 percent of all students who attend the University receive assistance through loans, scholarships, tuition waivers, grants and employment.

Type	Fund Source				Total	Students
	Federal	State	Institutional	Other		
Grants, Scholarships and Waivers	\$9,667,760	\$18,447,358	\$10,150,838	\$2,519,681	\$40,785,637	11,051
Loans	\$56,590,905	--	--	\$2,801,711	\$59,392,616	10,195
Employment	\$881,438	--	\$13,869,276	--	\$14,750,714	6,930
Total	\$67,140,103	\$18,447,358	\$24,020,114	\$5,321,392	\$114,928,967	15,897 <sup>2</sup>

<sup>2</sup> Number of students that received financial support in Fiscal Year 2003. Students may receive multiple awards.

Student Financial Aid by Fund Source



---

---

# Faculty/Staff Information

---

---

## Faculty and Staff Section Overview

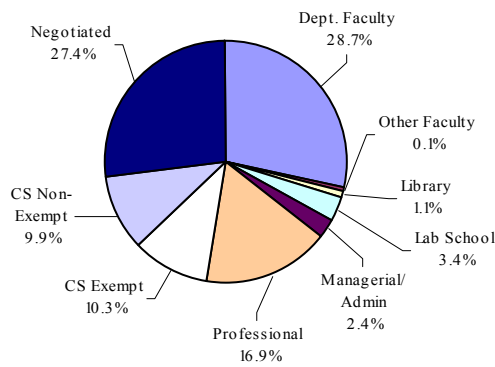
The Faculty and Staff Section of the *2003-2004 Fact Book*, provides selected historical and current fall 2003 information on University employees. The bullet points below contain selected summaries, trends and issues related to University staff:

- The University employs 3,304 staff: 37.3 percent Faculty; Administrative/Professionals add 19.0 percent; and 43.7 percent Civil Service. Personnel issues are the responsibility of The Office of Human Resources. Civil Service issues are addressed at ([www.hr.ilstu.edu/](http://www.hr.ilstu.edu/)); while Faculty and Administrative/Professional personnel issues are addressed on the Academic Administrative Services website at: ([www.provost.ilstu.edu/academicpersonnel/](http://www.provost.ilstu.edu/academicpersonnel/)).
- Approximately 53 percent of Illinois State University staff are female and 10 percent are minority.
- Departmental Faculty, the segment of the University staff whose primary responsibility is teaching, are further distributed into two major groups; tenure/tenure-track faculty and non-tenure-track and emeritus faculty. Over the past five years, the proportion of non-tenure-track departmental faculty has decreased from a high of 37 percent to the current 35 percent.
- The average age of Tenure/Tenure-track Departmental Faculty has remained virtually constant over the past ten years. The age increase for each rank is approximately one year.

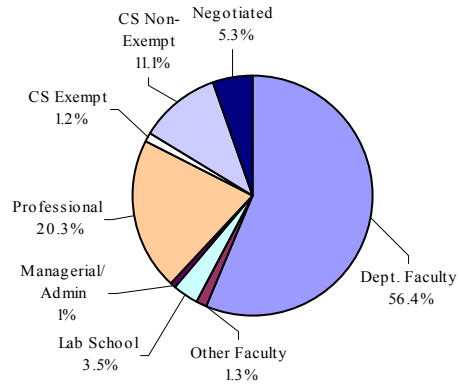
University Staff  
Number and Full-Time Equivalence (FTE)  
by Employee Category  
Fall 2003

	Full-Time	Part-Time		Total	
	Number	Number	FTE	Number	FTE
Departmental Faculty <sup>1</sup>	846	238	84.4	1,084	930.4
Non-Departmental Faculty	3	5	1.9	8	4.9
Library Faculty	31	--	--	31	31.0
Lab School Faculty	99	8	5.2	107	104.2
Managerial/Administrative	71	2	1.3	73	72.3
Professional	498	58	30.4	556	528.4
Civil Service					
Civil Service Exempt	303	3	1.8	306	304.8
Civil Service Non-Exempt	292	27	16.7	319	308.7
Negotiated	<u>807</u>	<u>13</u>	<u>7.9</u>	<u>820</u>	<u>814.9</u>
Civil Service Total	1,402	43	26.3	1,445	1,428.3
University Total	2,950	354	149.6	3,304	3,099.6
Civil Service Extra-Help	--		535	--	--
Graduate Assistants	--		869	--	--

Full-Time Staff



Part-Time FTE Staff



<sup>1</sup> Includes Department Chairs and part-time faculty whose major university appointment is Administrative/Professional or Civil Service.

University Staffing by Employee Type, Gender and Racial/Ethnic Designation  
Fall Terms 2001 through 2003

	Fall 2003	Faculty				Administrative/	Civil	Total
		Instructional	Non-Dept.	Library	Lab School	Professional	Service	
<u>Gender</u>		1,084	8	31	107	629	1,445	3,304
Male		593	3	10	35	285	638	1,564
Female		491	5	21	72	344	807	1,740
<u>Racial/Ethnic Designation</u>		1,084	8	31	107	629	1,445	3,304
Amer. Indian/Alaskan Native		3	--	--	--	1	7	11
Black/Non-Hispanic		29	--	--	4	55	94	182
Asian/Pacific Islander		51	--	--	1	8	10	70
Hispanic		14	--	--	1	9	29	53
White/Non-Hispanic		955	8	31	101	538	1,304	2,937
Non-Resident Alien		30	--	--	--	14	1	45
Unknown		2	--	--	--	4	--	6
	Fall 2002	Faculty				Administrative/	Civil	Total
		Instructional	Non-Dept.	Library	Lab School	Professional	Service	
<u>Gender</u>		1,101	8	29	112	648	1,543	3,441
Male		590	3	8	33	291	680	1,605
Female		511	5	21	79	357	863	1,836
<u>Racial/Ethnic Designation</u>		1,101	8	29	112	648	1,543	3,441
Amer. Indian/Alaskan Native		3	--	--	--	1	9	13
Black/Non-Hispanic		29	--	--	4	56	103	192
Asian/Pacific Islander		56	--	--	1	11	10	78
Hispanic		13	1	--	1	7	30	52
White/Non-Hispanic		972	7	29	106	557	1,389	3,060
Non-Resident Alien		27	--	--	--	3	1	31
Unknown		1	--	--	--	13	1	15
	Fall 2001	Faculty				Administrative/	Civil	Total
		Instructional	Non-Dept.	Library	Lab School	Professional	Service	
<u>Gender</u>		1,149	7	28	118	640	1,544	3,486
Male		620	2	9	36	282	688	1,637
Female		529	5	19	82	358	856	1,849
<u>Racial/Ethnic Designation</u>		1,149	7	28	118	640	1,544	3,486
Amer. Indian/Alaskan Native		4	--	--	--	1	7	12
Black/Non-Hispanic		36	--	--	5	58	103	202
Asian/Pacific Islander		54	--	--	1	16	13	84
Hispanic		16	--	--	--	8	28	52
White/Non-Hispanic		1,014	7	28	112	544	1,393	3,098
Non-Resident Alien		25	--	--	--	11	--	36
Unknown		--	--	--	--	2	--	2

Departmental Faculty  
By Tenure Status, Appointment, Gender and Racial/Ethnic Designation  
Fall 1999 through 2003

<u>Departmental Faculty</u>	<u>Fall Term</u>				
	<u>1999</u>	<u>2000</u>	<u>2001</u>	<u>2002</u>	<u>2003</u>
<b>Tenure Status</b>					
Tenure/Tenure-Track	701	692	692	699	705
Non-Tenure-Track	387	434	457	402	379
Total Departmental Faculty	1,088	1,126	1,149	1,101	1,084
<b>Appointment</b>					
Full-Time	858	855	865	847	846
Part-Time	230	271	284	254	238
<b>Gender</b>					
Male	599	616	620	590	593
Female	489	510	529	511	491
<b>Racial/Ethnic Designation</b>					
American Indian/Alaskan Native	2	2	4	3	3
Black/Non-Hispanic	40	38	36	29	29
Asian/Pacific Islander	47	48	54	56	51
Hispanic	14	16	16	13	14
White/Non-Hispanic	960	1,002	1,014	972	955
Non-Resident Alien	25	20	25	27	30
Unknown	--	--	--	1	2
<b><u>Tenure/Tenure-Track</u></b>					
Full-Time	695	686	689	697	702
Part-Time	6	6	3	2	3
<b>Gender</b>					
Male	458	443	439	432	438
Female	243	249	253	267	267
<b>Racial/Ethnic Designation</b>					
American Indian/Alaskan Native	1	1	2	3	3
Black/Non-Hispanic	25	25	27	25	24
Asian/Pacific Islander	38	38	43	45	43
Hispanic	11	12	11	10	11
White/Non-Hispanic	614	598	592	593	597
Non-Resident Alien	12	18	17	23	27
<b><u>Non-Tenure-Track</u></b>					
Full-Time	163	169	176	150	144
Part-Time	224	265	281	252	235
<b>Gender</b>					
Male	141	173	181	158	155
Female	246	261	276	244	224
<b>Racial/Ethnic Designation</b>					
American Indian/Alaskan Native	1	1	2	--	--
Black/Non-Hispanic	15	13	9	4	5
Asian/Pacific Islander	9	10	11	11	8
Hispanic	3	4	5	3	3
White/Non-Hispanic	346	404	422	379	358
Non-Resident Alien	13	2	8	4	3
Unknown	--	--	--	1	2

Departmental Faculty  
By College, Department and Percent Appointment  
Fall 1999 through 2003

College/Department	1999		2000		2001		2002		2003	
	Full	Part	Full	Part	Full	Part	Full	Part	Full	Part
<u>Applied Science and Technology</u>										
Agriculture	12	5	12	5	11	6	11	5	13	3
School of Information Technology	21	17	21	14	22	13	24	9	24	12
Criminal Justice Sciences	13	3	13	5	13	6	12	5	12	8
School of Kinesiology & Recreation	31	9	29	12	30	10	31	8	29	6
Health Sciences	21	1	20	6	19	7	17	6	19	1
Family and Consumer Sciences	15	7	14	9	14	9	16	7	15	9
Technology	<u>19</u>	<u>1</u>	<u>17</u>	<u>1</u>	<u>18</u>	<u>3</u>	<u>18</u>	<u>7</u>	<u>19</u>	<u>5</u>
Applied Science and Technology Total	132	43	126	52	127	54	129	47	131	44
<u>Arts and Sciences</u>										
Biological Sciences	27	4	30	5	30	4	28	5	30	3
Chemistry	21	1	20	3	21	4	20	4	23	1
Economics	18	1	18	1	17	1	16	2	18	--
English	65	7	66	8	66	8	56	13	54	9
Foreign Languages	26	7	26	5	28	6	26	6	26	4
Geography-Geology	15	3	15	3	13	3	15	1	15	--
History	25	14	29	13	27	11	29	18	29	13
Communication	34	10	37	7	42	6	39	2	35	7
Mathematics	50	7	50	6	51	9	49	8	48	8
Philosophy	13	--	13	2	12	--	13	2	14	1
Physics	12	--	10	2	12	1	12	1	13	1
Politics and Government	26	4	21	10	22	9	18	14	18	14
Psychology	37	9	36	11	35	9	35	10	37	6
School of Social Work	15	4	14	7	17	9	17	6	15	1
Sociology & Anthropology	27	2	24	6	25	5	26	3	24	7
Speech Path. & Audiology	<u>11</u>	<u>--</u>	<u>11</u>	<u>--</u>	<u>11</u>	<u>--</u>	<u>7</u>	<u>1</u>	<u>6</u>	<u>5</u>
Arts and Sciences Total	422	73	420	89	429	85	406	96	405	80
<u>Business</u>										
Accounting	25	5	22	9	23	4	21	5	24	7
Finance, Insurance and Law	19	1	20	6	21	3	21	5	22	3
Mgt. & Quant. Methods	31	6	31	7	31	10	30	6	30	6
Marketing	<u>17</u>	<u>5</u>	<u>17</u>	<u>7</u>	<u>17</u>	<u>7</u>	<u>19</u>	<u>3</u>	<u>18</u>	<u>2</u>
Business Total	92	17	90	29	92	24	91	19	94	18
<u>Education</u>										
Curriculum and Instruction	36	51	43	54	41	78	45	48	44	56
Educ. Admin. & Foundation	23	2	22	5	21	8	21	3	19	6
Special Education	<u>30</u>	<u>18</u>	<u>33</u>	<u>12</u>	<u>31</u>	<u>12</u>	<u>32</u>	<u>11</u>	<u>33</u>	<u>15</u>
Education Total	89	71	98	71	93	98	98	62	96	77
<u>Fine Arts</u>										
School of Art	43	10	40	10	40	7	39	10	35	7
School of Music	39	3	40	1	40	1	40	4	40	3
School of Theatre	<u>25</u>	<u>4</u>	<u>26</u>	<u>7</u>	<u>27</u>	<u>6</u>	<u>26</u>	<u>5</u>	<u>28</u>	<u>3</u>
Fine Arts Total	107	17	106	18	107	14	105	19	103	13
<u>Mennonite College of Nursing</u>										
Nursing	<u>16</u>	<u>9</u>	<u>15</u>	<u>12</u>	<u>17</u>	<u>9</u>	<u>18</u>	<u>11</u>	<u>17</u>	<u>6</u>
<u>Total</u>	858	230	855	271	865	284	847	254	846	238

Departmental Faculty  
By College, Department, Rank and Percent Appointment  
Fall 2003

<u>College/Department</u>	<u>Full-Time</u>					<u>Part-Time</u>		<u>Total</u>	
	<u>Professor</u>	<u>Associate Professor</u>	<u>Assistant Professor</u>	<u>Other</u>	<u>Total</u>	<u>Head-count</u>	<u>FTE</u>	<u>Head-count</u>	<u>FTE</u>
<u>Applied Science and Technology</u>									
Agriculture	5	2	6	--	13	3	0.75	16	13.75
School of Information Technology	3	6	9	6	24	12	2.83	36	26.83
Criminal Justice Sciences	7	--	4	1	12	8	2.25	20	14.25
School of Kinesiology and Recreation	7	2	14	6	29	6	1.57	35	30.57
Health Sciences	2	5	9	3	19	1	0.25	20	19.25
Family and Consumer Sciences	6	1	5	3	15	9	4.05	24	19.05
Technology	<u>8</u>	<u>3</u>	<u>4</u>	<u>4</u>	<u>19</u>	<u>5</u>	<u>1.14</u>	<u>24</u>	<u>20.14</u>
Applied Science and Technology Total	38	19	51	23	131	44	12.84	175	143.84
<u>Arts and Sciences</u>									
Biological Sciences	13	4	12	1	30	3	1.42	33	31.42
Chemistry	7	4	10	2	23	1	0.90	24	23.90
Economics	7	5	4	2	18	--	0.00	18	18.00
English	14	15	17	8	54	9	5.00	63	59.00
Foreign Languages	9	7	5	5	26	4	1.00	30	27.00
Geography-Geology	3	4	7	1	15	--	0.00	15	15.00
History	6	3	13	7	29	13	4.73	42	33.73
Communication	5	8	11	11	35	7	2.80	42	37.80
Mathematics	11	4	13	20	48	8	3.25	56	51.25
Philosophy	6	4	1	3	14	1	0.50	15	14.50
Physics	7	3	2	1	13	1	0.25	14	13.25
Politics and Government	5	7	5	1	18	14	4.18	32	22.18
Psychology	11	10	15	1	37	6	2.00	43	39.00
School of Social Work	1	7	7	--	15	1	0.25	16	15.25
Sociology & Anthropology	9	7	8	--	24	7	2.25	31	26.25
Speech Path. & Audiology	<u>1</u>	<u>3</u>	<u>2</u>	<u>--</u>	<u>6</u>	<u>5</u>	<u>1.62</u>	<u>11</u>	<u>7.62</u>
Arts and Sciences Total	115	95	132	63	405	80	30.15	485	435.15
<u>Business</u>									
Accounting	9	6	5	4	24	7	2.25	31	26.25
Finance, Insurance and Law	12	1	6	3	22	3	0.75	25	22.75
Mgt. & Quant. Methods	12	9	4	5	30	6	3.75	36	33.75
Marketing	<u>7</u>	<u>3</u>	<u>6</u>	<u>2</u>	<u>18</u>	<u>2</u>	<u>0.33</u>	<u>20</u>	<u>18.33</u>
Business Total	40	19	21	14	94	18	7.08	112	101.08
<u>Education</u>									
Curriculum and Instruction	7	6	21	10	44	56	18.98	100	62.98
Educ. Admin. & Foundation	5	5	9	--	19	6	2.45	25	21.45
Special Education	<u>4</u>	<u>8</u>	<u>6</u>	<u>15</u>	<u>33</u>	<u>15</u>	<u>6.80</u>	<u>48</u>	<u>39.80</u>
Education Total	16	19	36	25	96	77	28.23	173	124.23
<u>Fine Arts</u>									
School of Art	3	15	16	1	35	7	1.69	42	36.69
School of Music	11	5	20	4	40	3	1.12	43	41.12
School of Theatre	<u>7</u>	<u>8</u>	<u>7</u>	<u>6</u>	<u>28</u>	<u>3</u>	<u>1.25</u>	<u>31</u>	<u>29.25</u>
Fine Arts Total	21	28	43	11	103	13	4.06	116	107.06
<u>Mennonite College of Nursing</u>									
Nursing	<u>--</u>	<u>3</u>	<u>6</u>	<u>8</u>	<u>17</u>	<u>6</u>	<u>1.92</u>	<u>23</u>	<u>18.92</u>
<u>Total</u>	230	183	289	144	846	238	84.28	1,084	930.28



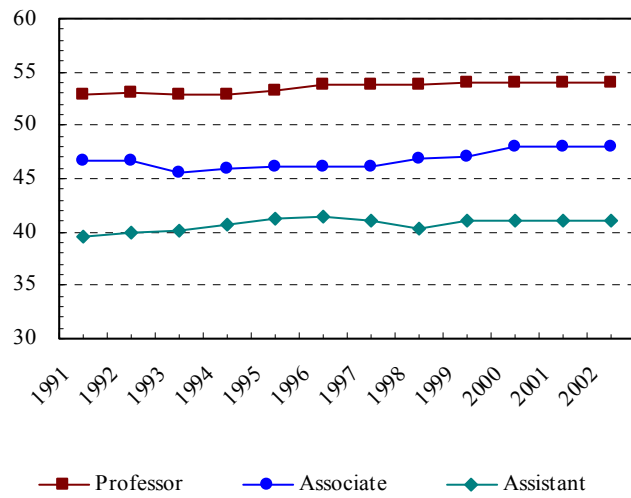
Departmental Faculty  
by College, Rank, Gender and Racial/Ethnic Designation  
Fall 2003

	American Indian/Alaskan		Black		Asian/Pacific Islander		Hispanic		White Non-Hispanic		Non-Resident Alien		Unknown		Total		Grand Total	
	Male	Female	Male	Female	Male	Female	Male	Female	Male	Female	Male	Female	Male	Female	Male	Female		
<u>Applied Science &amp; Technology</u>																		
Professor	--	--	--	1	--	2	--	1	25	9	--	--	--	--	25	13	38	
Associate Professor	--	1	--	--	3	--	1	--	11	3	--	--	--	--	15	4	19	
Assistant Professor	--	--	1	--	1	1	--	--	23	22	3	--	--	--	28	23	51	
Unranked	--	--	1	--	--	2	--	1	35	28	--	--	--	--	36	31	67	
Total	--	1	2	1	4	5	1	2	94	62	3	--	--	--	104	71	175	
<u>Arts and Sciences</u>																		
Professor	--	--	1	--	12	2	--	--	79	20	--	1	--	--	92	23	115	
Associate Professor	--	--	2	1	3	--	2	1	55	31	--	1	--	--	62	34	96	
Assistant Professor	--	2	6	3	--	3	2	1	49	53	8	5	--	--	65	67	132	
Unranked	--	--	--	2	--	5	--	--	64	66	2	1	1	1	67	75	142	
Total	--	2	9	6	15	10	4	2	247	170	10	8	1	1	286	199	485	
<u>Business</u>																		
Professor	--	--	--	--	5	--	1	--	26	9	--	--	--	--	32	9	41	
Associate Professor	--	--	--	--	3	--	--	--	13	3	--	--	--	--	16	3	19	
Assistant Professor	--	--	--	1	2	1	--	--	11	4	1	1	--	--	14	7	21	
Unranked	--	--	--	1	--	--	1	--	18	11	--	--	--	--	19	12	31	
Total	--	--	--	2	10	1	2	--	68	27	1	1	--	--	81	31	112	
<u>Education</u>																		
Professor	--	--	--	--	1	--	--	--	9	6	--	--	--	--	10	6	16	
Associate Professor	--	--	--	1	1	--	--	--	8	9	--	--	--	--	9	10	19	
Assistant Professor	--	--	3	3	--	--	--	1	8	18	3	--	--	--	14	22	36	
Unranked	--	--	--	--	--	--	1	--	22	79	--	--	--	--	23	79	102	
Total	--	--	3	4	2	--	1	1	47	112	3	--	--	--	56	117	173	
<u>Fine Arts</u>																		
Professor	--	--	--	--	1	--	--	--	17	4	--	--	--	--	18	4	22	
Associate Professor	--	--	--	1	--	1	--	--	16	9	1	--	--	--	17	11	28	
Assistant Professor	--	--	--	--	1	--	--	--	20	19	--	3	--	--	21	22	43	
Unranked	--	--	1	--	--	1	--	--	9	12	--	--	--	--	10	13	23	
Total	--	--	1	1	2	2	--	--	62	44	1	3	--	--	66	50	116	
<u>Nursing</u>																		
Professor	--	--	--	--	--	--	--	--	--	--	--	--	--	--	--	--	--	
Associate Professor	--	--	--	--	--	--	--	1	--	3	--	--	--	--	--	4	4	
Assistant Professor	--	--	--	--	--	--	--	--	--	5	--	--	--	--	--	5	5	
Unranked	--	--	--	--	--	--	--	--	--	14	--	--	--	--	--	14	14	
Total	--	--	--	--	--	--	--	1	--	22	--	--	--	--	--	23	23	
University Total	--	3	15	14	33	18	8	6	518	437	18	12	1	1	593	491	1,084	

Tenure/Tenure Track Departmental Faculty  
by Rank and Age <sup>1</sup>  
Fall 2003

	<u>Professor</u>	<u>Associate Professor</u>	<u>Assistant Professor</u>	<u>Total</u>
29 or Less	--	--	16	16
30 - 34	--	1	52	53
35 - 39	--	26	73	99
40 - 44	16	50	53	119
45 - 49	41	36	42	119
50 - 54	59	38	30	127
55 - 59	64	18	18	100
60 - 64	40	15	4	59
65 or Over	<u>12</u>	<u>--</u>	<u>1</u>	<u>13</u>
Total	232	184	289	705

Average Age



<sup>1</sup> Age is calculated as of December 31<sup>st</sup> of the reported year.

---

---

# *Institutional Resources*

---

---

## Institutional Resources Section Overview

The Institutional Resources Section of the *2003-2004 Fact Book* provides historical and current information on appropriations; expenditures and mandatory transfers; funds revenues by source; sponsored research, instruction, creative works, and service; and the most recently published statewide comparisons (Fiscal Year 2002) of credit hour production and instructional costs at Illinois public universities.

- During Fiscal Year 2003, Illinois State University received \$267.9 million from all sources, which is a decrease of almost \$1 million, or 0.4 percent, from Fiscal Year 2002.
- During Fiscal Year 2003, Illinois State University expended \$258.1 million. Fifty-five percent of the expenditures are from State appropriated funds and from tuition (generally, unrestricted funds).
- The Fiscal Year 2002 weighted average of instructional expenditures from appropriated funds per full-time equivalent student at Illinois State University (\$5,919) was the lowest in the State and fell below the statewide average (\$6,736). Maintaining efficiency, affordability, and accessibility are high priorities at Illinois State.
- Fiscal Year 2002 credit hours generated per instructional staff year at Illinois State University (700) was the third highest of the 12 Illinois public universities and exceeded the statewide average (629).

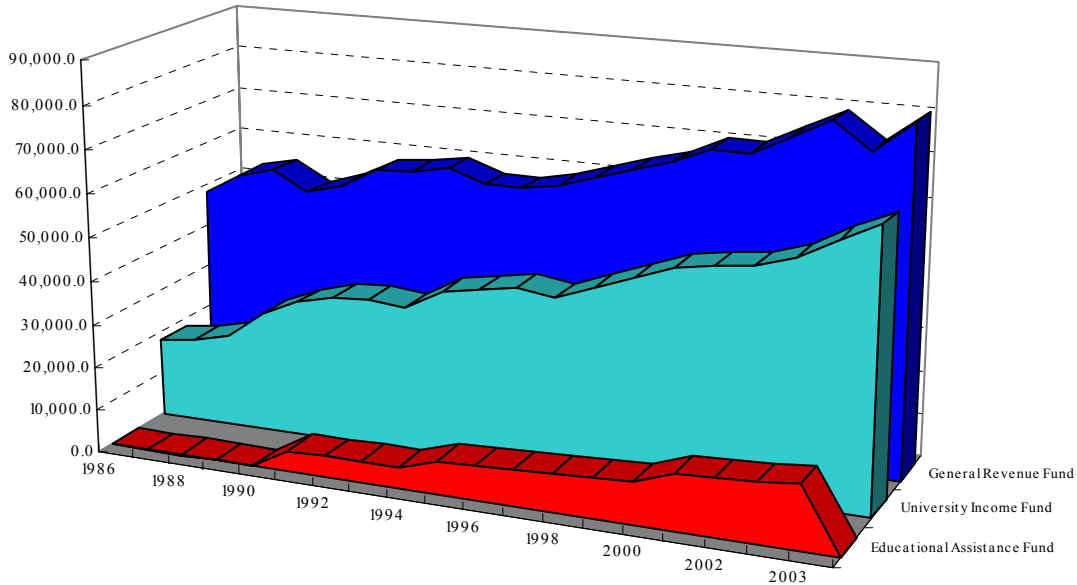
Historical State Appropriations and University Income Fund<sup>1</sup>  
 for Operations and Grants by Source of Funds  
 Fiscal Year 2000 through Fiscal Year 2004  
 (Excludes Retirement)

(dollars in thousands)

	<u>2000</u>	<u>2001</u>	<u>2002</u>	<u>2003</u>	<u>2004</u>
General Revenue Fund	\$70,295.1	\$74,705.4	\$79,310.5 <sup>2</sup>	\$73,278.8	\$80,452.0
University Income Fund <sup>1</sup>	51,289.9	52,117.5	55,146.1	59,762.3	63,985.8
Educational Assistance Fund	12,676.1	13,056.4	13,709.2	14,394.7	0.0
Students Integrating Appropriation	--	--	365.0 <sup>3</sup>	--	--
Total Appropriation	\$134,261.1	\$139,879.3	\$148,530.8	\$147,435.8	\$144,437.8

<sup>1</sup> As of August 2, 1996, University Income Fund is held locally and not appropriated by the General Assembly.  
<sup>2</sup> Original appropriation. Due to a mid-year rescission, the actual spending authority was \$78,246.50.  
<sup>3</sup> Lump sum appropriation for HECA grants. This becomes part of FY2003 General Revenue Base.

Appropriations and University Income Fund for Operations and Grants by Source of Funds



Total Expenditures and Mandatory Transfers  
1999 through FY2003

(dollars in thousands)	Total Operating Funds by Fund Type				
	1999	2000	2001	2002	2003
State Appropriated Tax Funds and					
University Income Fund	\$129,403.8	\$133,642.3	\$139,390.3	\$145,309.5	\$140,947.2
Gifts, Grants and Contracts	26,230.4	25,633.5	27,378.9	30,280.6	32,556.5
Agency	24,281.2	30,377.3	35,101.4	36,086.8	36,422.1
Bond Revenue/Other Auxiliary	49,151.1	48,828.5	52,071.4	53,680.6	48,213.1
Total	\$229,066.5 <sup>1</sup>	\$238,481.6 <sup>2</sup>	\$253,942.0 <sup>3</sup>	\$265,357.5 <sup>4</sup>	\$258,138.9 <sup>5</sup>
State Appropriated Funds by Object Class					
	1999	2000	2001	2002	2003
Personal Services	\$94,462.5	\$101,428.1	\$105,337.1	\$111,535.5	\$108,291.5
Contractual	15,774.1	15,491.4	17,414.7	17,912.6	14,077.1
Equipment and Books	8,548.4	6,738.4	7,024.4	6,907.3	5,669.9
Commodities	2,503.1	2,264.2	2,528.7	2,511.4	2,191.5
Other	8,115.7	7,720.2	7,085.4	6,442.9	6,447.6
Group Health Insurance	--	--	--	--	3,078.3
Medicare	--	--	--	--	1,191.3
Total	\$129,403.8	\$133,642.3	\$139,390.3	\$145,309.7	\$140,947.2
State Appropriated Funds by Functional Classification					
	1999	2000	2001	2002	2003
Instruction	\$71,036.3	\$77,773.3	\$78,933.9	\$83,788.2	\$79,257.8
Operation and Maintenance	21,111.9	22,705.4	20,080.8	20,224.3	19,125.5
Institutional Support	15,634.2	13,450.5	16,686.0	16,994.4	15,307.1
Organized Research	1,858.4	1,172.3	2,613.4	2,804.2	1,809.3
Public Service	2,666.2	1,124.1	2,839.7	2,970.4	2,820.1
Academic Support	11,878.9	12,582.1	12,722.7	13,616.1	12,851.3
Student Services	5,217.9	4,834.6	5,513.8	4,912.1	5,506.5
Group Health Insurance	--	--	--	--	3,078.3
Medicare	--	--	--	--	1,191.3
Total	\$129,403.8	\$133,642.3	\$139,390.3	\$145,309.7	\$140,947.2

<sup>1</sup> Excludes \$25.5 million in Payments on Behalf of the University.

<sup>2</sup> Excludes \$29.1 million in Payments on Behalf of the University.

<sup>3</sup> Excludes \$32.2 million in Payments on Behalf of the University.

<sup>4</sup> Excludes \$33.5 million in Payments on Behalf of the University.

<sup>5</sup> Excludes \$35.1 million in Payments on Behalf of the University.

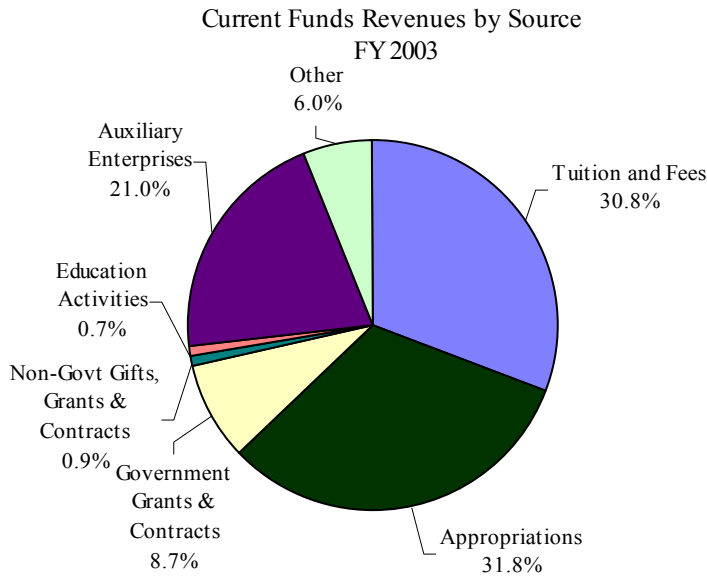
Current Funds Revenues by Source  
FY2002 and FY2003

Source	Fiscal Year 2002		Fiscal Year 2003	
	Amount	Percent of Total	Amount	Percent of Total
Tuition and Fees	\$76,186,271	28.4	\$82,569,129	30.8
State Government Tax Funds Appropriations	92,285,399	34.4	85,316,120	31.8
Government Grants and Contracts				
Federal	16,374,788	6.1	17,258,729	6.4
State	5,913,581	2.2	6,171,414	2.3
Non-Governmental Gifts, Grants and Contracts	3,843,145	1.4	2,450,953	0.9
Sales & Services of Education Activities	1,812,628	0.7	1,821,619	0.7
Sales & Services of Auxiliary Enterprises	54,881,049	20.5	56,249,152	21.0
Other Sources	<u>17,566,475</u>	<u>6.6</u>	<u>16,047,514</u>	<u>6.0</u>
Total	\$268,863,336 <sup>2</sup>	0.0	\$267,884,630 <sup>3</sup>	100.0

<sup>1</sup> Excludes \$33.5 million in Payments on Behalf of the University.

<sup>2</sup> Excludes \$35.1 million in Payments on Behalf of the University.

Source: Report of the Comptroller



Instructional Expenditures<sup>1</sup> from Appropriated Funds  
Per Full-Time Equivalent (FTE) Student  
at Illinois Public Universities  
FY2002

<u>Institution</u>	<u>Undergraduate</u>	<u>Graduate</u>	<u>Weighted Average</u>
Chicago State University	\$ 8,804	\$ 7,231	\$ 8,473
Eastern Illinois University	6,096	8,620	6,362
Governors State University	6,394	7,963	7,130
Northeastern Illinois University	5,778	7,999	6,193
Western Illinois University	5,699	7,364	5,926
Illinois State University	5,648	8,500	5,919
Northern Illinois University	5,850	9,810	6,668
Southern Illinois University			
Carbondale	5,858	11,219	6,783
Edwardsville	<u>5,552</u>	<u>8,595</u>	<u>6,047</u>
Southern Illinois University Total	5,743	10,273	6,508
University of Illinois			
Chicago	5,114	11,552	7,022
Springfield	7,394	8,000	7,634
Urbana-Champaign	<u>5,310</u>	<u>11,951</u>	<u>7,266</u>
University of Illinois Total	5,318	11,607	7,200
Public Universities Total	\$ 5,720	\$ 10,377	\$ 6,736

<sup>1</sup> Instructional Expenditures includes Direct and Indirect Instruction, Departmental Research and Departmental, College and University Overheads.

Source: Illinois Board of Higher Education Discipline Cost Study



Credit Hours Produced Per Faculty Staff-Year<sup>1</sup> at  
Illinois Public Universities in FY2002

<u>Institution</u>	Semester Credit Hours	<u>Staff-Year Instruction</u>		Credit Hours Per Instructional Staff-Year
		<u>Direct</u>	<u>Indirect</u>	
Chicago State University	141,648	221.85	28.66	565
Eastern Illinois University	287,154	405.84	96.14	572
Governors State University	101,809	187.27	13.75	506
Northeastern Illinois University	229,802	336.83	39.70	610
Western Illinois University	332,854	370.84	123.75	673
Illinois State University	554,882	635.21	157.91	700
Northern Illinois University	586,688	707.16	171.62	668
Southern Illinois University				
Carbondale	480,404	611.49	260.91	551
Edwardsville	<u>303,287</u>	<u>318.08</u>	<u>104.67</u>	<u>717</u>
Southern Illinois University Total	783,691	929.57	365.58	605
University of Illinois				
Chicago	603,462	822.49	164.13	612
Springfield	81,300	107.27	8.63	701
Urbana-Champaign	<u>1,158,802</u>	<u>1,469.65</u>	<u>367.27</u>	<u>631</u>
University of Illinois Total	1,843,564	2,399.41	540.03	627
Public Universities Total	4,862,092	6,193.98	1,537.14	629

<sup>1</sup> Faculty staff-years are calculated such that a typical full-time nine month appointment is .75 staff years.

Source: Faculty Credit Hour Study for Illinois Public Universities

Proportion of Departmental Faculty Staff-Years  
Devoted to Functions at Illinois Public Universities in FY2002

<u>Institution</u>	Total <u>Instructional</u>	Total <u>Research</u>	Public <u>Service</u>	Departmental <u>Administration</u>	Total <u>Department</u>
Chicago State University	75.9%	9.3%	7.2%	7.6%	100.0%
Eastern Illinois University	87.5	2.3	2.2	8.1	100.0
Governors State University	81.1	9.2	4.0	5.7	100.0
Northeastern Illinois University	81.2	3.4	3.4	11.9	100.0
Western Illinois University	85.9	3.5	3.7	6.9	100.0
Illinois State University	75.3	14.4	2.6	7.7	100.0
Northern Illinois University	75.0	13.4	5.0	6.7	100.0
Southern Illinois University					
Carbondale	68.3	18.2	7.7	5.7	100.0
Edwardsville	<u>73.7</u>	<u>11.6</u>	<u>2.6</u>	<u>12.1</u>	<u>100.0</u>
Southern Illinois University Total	70.0	16.2	6.1	7.7	100.0
University of Illinois					
Chicago	53.5	26.6	9.0	10.9	100.0
Springfield	55.0	11.1	11.8	22.0	100.0
Urbana-Champaign	<u>50.8</u>	<u>27.3</u>	<u>12.8</u>	<u>9.2</u>	<u>100.0</u>
University of Illinois Total	51.8	26.5	11.5	10.2	100.0
Public Universities Total	64.8%	18.5%	7.8%	8.9%	100.0%

Source: Illinois Board of Higher Education Faculty Credit-Hour Study

Sponsored Research, Instruction, Creative Works, and Service  
(State, Federal, and Private Funding)  
Fiscal Years 2000 through 2003

<u>Submissions</u> <sup>1</sup>	<u>Fiscal Year 2000</u>		<u>Fiscal Year 2001</u>		<u>Fiscal Year 2002</u>		<u>Fiscal Year 2003</u>	
	<u>Amount</u>	<u>N</u>	<u>Amount</u>	<u>N</u>	<u>Amount</u>	<u>N</u>	<u>Amount</u>	<u>N</u>
Research	\$15,009,796	133	\$20,198,127	102	\$30,551,780	137	\$66,319,402	176
Instruction	48,781,002	184	27,121,366	159	29,215,545	97	17,669,330	96
Creativity	201,470	12	184,326	10	45,000	2	172	1
Public Service	5,029,313	44	6,245,796	51	5,867,772	70	6,678,940	69
Other	--	--	301,958	6	3,971,150	27	10,054,291	41
Total	\$69,021,581	373	\$54,051,573	328	\$69,651,247	333	\$100,722,135	383

<u>Awards</u> <sup>2</sup>	<u>Fiscal Year 2000</u>		<u>Fiscal Year 2001</u>		<u>Fiscal Year 2002</u>		<u>Fiscal Year 2003</u>	
	<u>Amount</u>	<u>N</u>	<u>Amount</u>	<u>N</u>	<u>Amount</u>	<u>N</u>	<u>Amount</u>	<u>N</u>
Research	\$3,550,389	67	\$3,672,291	67	\$4,437,884	75	\$5,695,799	77
Instruction	11,386,831	175	13,964,708	152	10,863,953	94	6,870,761	90
Creativity	128,309	9	136,852	9	75,200	6	13,750	1
Public Service	2,249,255	44	1,974,392	39	4,512,762	81	3,961,409	69
Other	--	--	87,200	3	379,008	8	1,416,851	29
Total	\$17,314,784	295	\$19,835,443	270	\$20,268,807	264	\$17,958,570	266

Awards by Source  
Fiscal Years 2000 through 2003

<u>Type of Funding</u>	<u>Fiscal Year 2000</u>		<u>Fiscal Year 2001</u>		<u>Fiscal Year 2002</u>		<u>Fiscal Year 2003</u>	
	<u>Amount</u>	<u>Pct</u>	<u>Amount</u>	<u>Pct</u>	<u>Amount</u>	<u>Pct</u>	<u>Amount</u>	<u>Pct</u>
Federal Awards	\$6,195,708	35.8	\$7,309,312	36.8	\$8,232,001	40.6	\$8,059,950	44.9
Federal Flow-through	--	--	--	--	374,403	1.8	1,139,694	6.3
State Awards	5,322,554	30.7	6,143,251	31.0	7,478,792	36.9	5,513,798	30.7
Corporate Awards	2,355,964	13.6	2,128,495	10.7	1,205,653	5.9	853,995	4.8
Other Awards	3,440,558	19.9	4,254,385	21.4	2,977,958	14.7	2,391,133	13.3
Total Awards	\$17,314,784	100.0	\$19,835,443	100.0	\$20,268,807	100.0	\$17,958,570	100.0

<sup>1</sup> Proposals submitted between July 1 and June 30.

<sup>2</sup> Awards approved between July 1 and June 30.

---

---

# University Facilities

---

---

## Facilities Section Overview

Illinois State University is located in the twin-city community of Bloomington-Normal, with a population of approximately 110,200 and is centrally located 137 miles southwest of Chicago and 164 miles northeast of St. Louis. The campus is comprised of 970 acres, including 128 acres of turf, 62 acres of parking, and 19.5 miles of sidewalk. The University maintains 143 buildings, totaling approximately 5.5 million square feet, which include:

- The nation's two tallest residence halls and 10 additional residence halls house 7,126 students; 326 students reside in two University-owned apartment complexes.
- Milner Library, which has over 1.5 million volumes; over 12,000 printed and electronic periodical subscriptions, handles more than 268,000 loan transactions each year.
- The laboratory schools, Thomas Metcalf Elementary and University High enroll the fifth largest number of students of the nation's 94 laboratory schools.
- Redbird Arena and Horton Field House seat 10,200 and 5,000 respectively.
- The University Galleries consist of three galleries with 7,500 square feet of exhibition space.
- A new Center for the Performing Arts contains a 460-seat theatre and an 830-seat concert hall.
- A 360-acre farm at Lexington, Illinois and an aquaculture center on 230-acres in Normal provide agriculture research facilities.
- The Bone Student Center includes the 3,500-seat Braden Auditorium.
- The University planetarium seats 110 spectators at public and special group shows.
- In addition to being the home of the [Illinois Shakespeare Festival](#), Ewing Cultural Center provides a gracious setting for a variety of cultural, educational, and social events.
- The Student Services Building contains a modern, accredited health service.

Residence Hall Occupancy  
by Gender and Class Level  
Fall 1999 through Fall 2003

<u>Gender</u>	<u>Fall Semester</u>				
	<u>1999</u>	<u>2000</u>	<u>2001</u>	<u>2002</u>	<u>2003</u>
Male	2,854	2,887	2,965	2,846	2,795
Female	4,360	4,510	4,596	4,509	4,331
Total	7,214	7,397	7,561	7,355	7,126

<u>Class</u>	<u>Fall Semester</u>				
	<u>1999</u>	<u>2000</u>	<u>2001</u>	<u>2002</u>	<u>2003</u>
Freshmen	4,007	4,187	4,365	4,112	3,973
Sophomore	1,709	1,770	1,839	1,872	1,917
Junior	822	823	789	830	718
Senior	524	497	451	456	449
Unclassified	63	42	65	39	26
Graduate Students	89	78	52	46	43
Total	7,214	7,397	7,561	7,355	7,126

Residence Buildings and Associated Facilities  
as of Fall 2003

<u>Name</u>	<u>Year of Construction</u>	<u>Square Feet</u>	<u>Net Assigned Sq. Ft.</u>
Atkin Hall	1962	80,173	49,191
Barton Hall	1952	36,272	21,754
Cardinal Court 1st Additions	1965	61,974	47,174
Cardinal Court Buildings	1958	52,618	40,053
Cardinal Court Laundry Room	1963	3,680	3,346
Cardinal Court Meeting Room	1986	1,545	1,208
Colby Hall	1962	80,173	50,095
Connecting Facilities Btn Atk/Col	1962	29,675	23,784
Connecting North & South Towers	1969	32,463	2,530
Dunn Barton Connecting	1952	7,788	5,533
Dunn Hall	1952	36,313	21,993
Farm House #1 (Lexington)	2002	1,813	1,450
Farm House #2 (Lexington)	2002	1,200	960
Feeney Food Center	1960	43,894	34,352
Hamilton Hall	1960	80,173	48,224
Hamilton Whitten Connecting	1960	29,675	20,240
Haynie Hall	1964	97,750	54,737
Hewett Hall	1966	161,268	87,488
Linkins Center	1964	44,134	28,463
Manchester Hall	1966	161,268	89,572
Office of Residential Life Bldg	1989	16,500	11,393
ORL Laundry Bldg	1989	4,262	2,750
Shelbourne Apartments	1971	67,730	59,100
Shelbourne Apts Maintenance	1971	1,647	4,078
Tunnel Btwn Dunn-Barton/Walker	1955	1,224	0
University Residence	1971	7,615	7,564
Vrooman Food Center	1966	65,000	40,623
Walker Hall	1955	85,960	62,170
Watterson Dining	1969	75,639	51,537
Watterson Towers, North	1969	259,922	199,213
Watterson Towers, South	1969	260,130	199,145
Whitten Hall	1960	80,173	49,750
Wilkins Hall	1964	97,720	54,190
Wright Hall	1964	97,750	53,825
Total		2,165,121	1,427,485

Academic Buildings  
as of Fall 2003

<u>Name</u>	<u>Year of Construction</u>	<u>Square Feet</u>	<u>Net Assigned Sq. Ft.</u>
Adlai E. Stevenson Hall	1966	162,180	104,801
Art Studio Bldg	1993	10,972	9,427
Centennial East	1959	59,455	38,045
Centennial West	1959	30,182	18,404
Center for the Visual Arts	1973	132,916	84,311
Clarence R Ropp Agriculture Bldg	1982	30,738	24,044
Cook Hall	1896	34,611	21,570
DeGarmo Hall	1973	115,376	63,471
Educational Administration Bldg	1967	2,206	1,581
Edwards Hall	1909	40,169	22,541
Fairchild Hall	1952	80,903	45,662
Fell Hall	1918	94,856	52,136
Felmley Hall of Science	1930	53,096	28,399
Felmley Science Annex	1964	81,969	52,028
Horton Fieldhouse	1963	198,391	138,147
Hudelson Bldg	1960	3,000	1,972
Julian Hall	1970	57,170	31,839
McCormick Hall	1926	63,440	45,680
Milner Library	1976	230,710	186,980
Moulton Hall	1912	50,408	28,171
Old Union	1956	50,553	26,674
Rachel Cooper	1952	24,046	14,714
Schroeder Hall-East	1957	58,060	36,634
Schroeder Hall-West	1965	46,348	23,823
Science Laboratory Building	1997	112,000	79,257
Thomas Metcalf School	1957	119,500	73,276
Turner Hall	1963	97,118	64,977
University High School	1965	134,600	96,138
Vitro Center (Glass House)	1949	4,705	4,092
Vitro Center Annex	1997	540	540
Williams Hall	1940	97,153	57,392
Total		2,277,371	1,476,726



General, Miscellaneous and Support Facilities  
as of Fall 2003

<u>Name</u>	<u>Year of Construction</u>	<u>Square Feet</u>	<u>Net Assigned</u> <u>Sq. Ft.</u>
211 N University	1960	12,546	10,043
711 N Main (Nite Ride)	1955	1,622	1,424
Bill Waller Parking Serv Bldg	1960	1,560	1,242
Bone Student Center	1973	118,669	84,298
Bowling & Billiards Center	1973	22,709	18,132
Braden Auditorium	1973	140,000	67,574
Campus Recreation (220 N Main)	1960	5,100	4,019
Center for the Performing Arts	2001	142,109	90,950
Daily Vidette Bldg	1994	3,910	3,190
Driver Education Bldg (Gregory St)	1972	2,593	2,166
Energy House	1988	2,960	2,810
Eyestone School Museum	1930	993	934
Facilities Planning Bldg	1969	2,850	1,286
Golf Course Buildings	1963, 1971, 1988, 1983, 1998	14,263	11,923
Gregory Street Recreation Storage	1969	443	419
Hancock Restroom/Concession	1976	1,461	416
Horton Maintenance/Storage	1990	2,000	1,915
House 302 N Normal	1940	3,334	1,877
House 411 W Willow	1970	4,465	2,862
Hovey Hall	1951	67,807	39,848
Instructional Tech & Dev Center	1957	16,716	12,365
John Green Building	1967	51,195	38,561
Kaufman Football Building	2000	16,000	9,436
McCormick Tennis Court Bldg	1976	153	80
Nelson Smith Bldg	1970	65,898	50,764
P E Storage	1985	1,800	1,800
Press Boxes (Baseball & Softball)	1989, 1997	536	718
Professional Development Bldg & Annex	1964, 1970	15,090	9,887
Rambo House	1939	9,116	4,477
Redbird Arena	1989	163,075	99,056
Research Services Building	1966	10,055	8,541
Student Accounts Bldg	1957	7,820	5,950
Student Rec Bldg (Beech St)	1982	36,857	31,210
Student Services Building	1992	67,631	41,654
U-High Soccer Shed	1998	288	0
University Multicultural Center	1950	4,542	3,399
University Parking Garages (N, S, and School St)	1992, 1999, 1992	513,361	217
Warehouse Road Complex 1 & 2	1980, 1984	75,000	67,182
Williams Hall Annex	1940	3,693	2,373
Total		1,610,220	734,998