



ILLINOIS STATE  
UNIVERSITY

*Illinois' first public university*

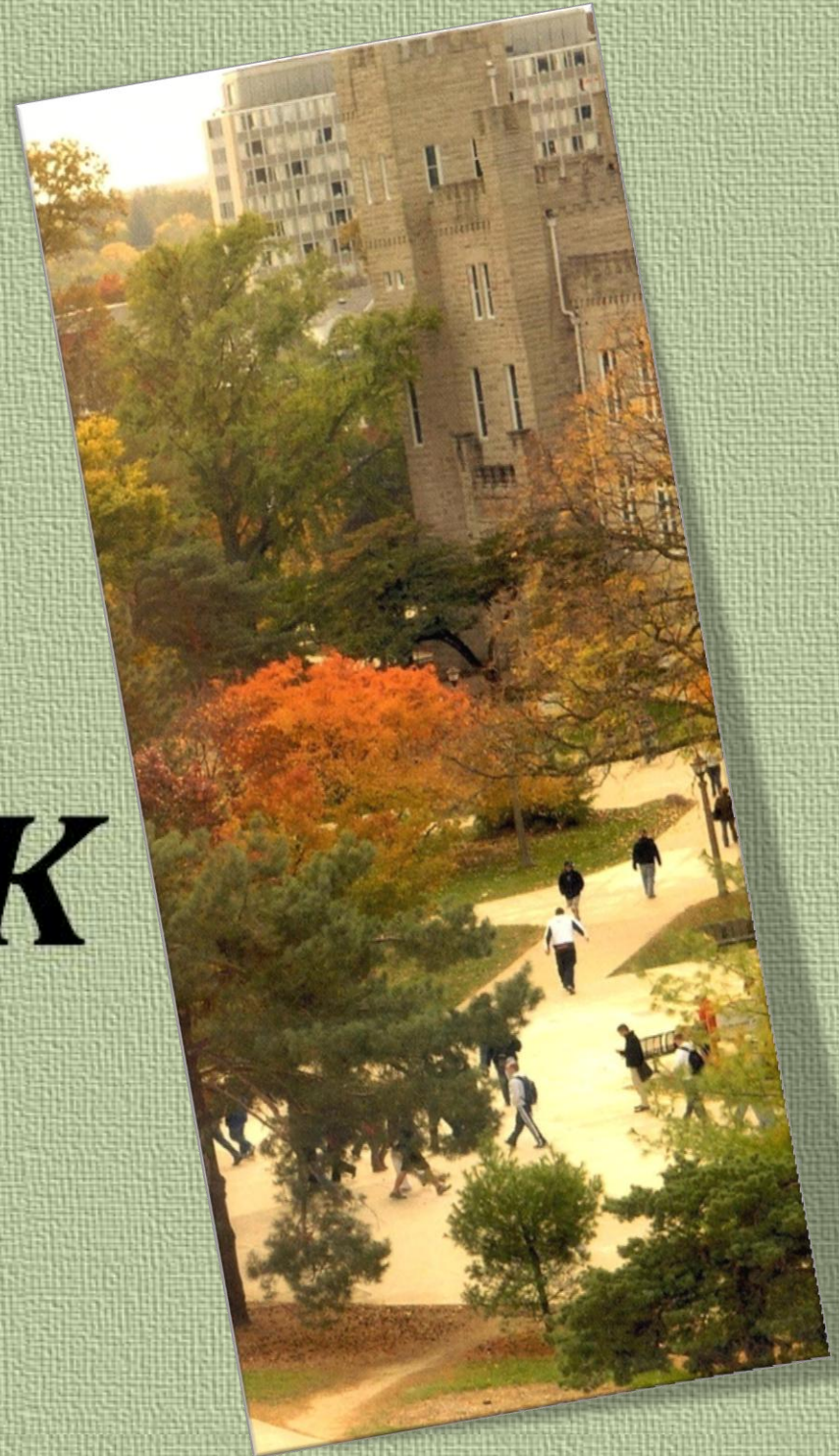
# ***FACTBOOK***

Fall 2008

Planning and Institutional Research

[www.pir.ilstu.edu](http://www.pir.ilstu.edu)

(309) 438-8393





November 2008

Dear Colleague:

I am pleased to present the twenty-second annual *FactBook* prepared by the Planning and Institutional Research office. The *FactBook* contains a collection of useful information designed to answer frequently asked questions about Illinois State University -- Illinois' first public university.

Much has changed since Illinois State University opened its doors to students in 1857. The University first conferred undergraduate degrees in 1860, began offering master's degree programs in 1943 and introduced doctoral work in 1962. Currently, the University offers sixty-six undergraduate programs, forty-one master's programs, nine doctoral programs, a Specialist in School Psychology and eight graduate level certificates. In fiscal year 2008, the University conferred 4,939 degrees - 4,186 baccalaureates, 663 master's, 56 doctorates and 34 certificates. A total of 20,799 students are enrolled this fall (On- and Off-Campus) - 86.9 percent of whom are enrolled in undergraduate programs.

While the University has undergone many changes, our core values have remained steadfast. These values - pursuit of learning and scholarship, individualized attention, public opportunity, diversity, and civic engagement - remain the foundation for everything we do. The goals articulated in the University's strategic plan, *Educating Illinois* emanate from these values, and collectively focus the institution on the actions necessary to be a first-choice public university for high-achieving, motivated students who seek individualized educational experiences combined with the resources of a large university. Data provided in the *FactBook* show that the University is attracting academically prepared students, and that our students are continuing and completing their education at historic rates.

I encourage you to use this publication to familiarize yourself with the basic facts about Illinois State University. Data are presented at the University and College level; information by department and major is available on-line at [www.pir.ilstu.edu](http://www.pir.ilstu.edu). Additional information on *Educating Illinois* is available at [www.educatingillinois.ilstu.edu](http://www.educatingillinois.ilstu.edu). If you have questions about the University or *Educating Illinois*, please contact the Planning and Institutional Research office by telephone at (309) 438-8393 or by e-mail at [pir@ilstu.edu](mailto:pir@ilstu.edu).

Sincerely,

A handwritten signature in black ink, appearing to read "Al Bowman".

Al Bowman  
President



# TABLE OF CONTENTS

## TABLE OF CONTENTS

### QUICK GLANCE

Board of Trustees & University Administrators .....	1
Deans, Department Chairs, and School Directors ~ Fall 2008 .....	2
University Facts ~ Fall 2008 .....	3
Undergraduate Students ~ Fall 2008 .....	4
Graduate Students ~ Fall 2008 .....	5
College Enrollment by Racial/Ethnic Designation ~ Fall 2008 .....	6
Departmental Faculty Characteristics ~ Fall 2008 .....	7
Strategic Plan <i>Educating Illinois 2008-2014</i> .....	8
Endowed Chairs ~ Fall 2008 .....	9

### ORGANIZATIONAL CHARTS

President ~ Al Bowman .....	11
Vice President Academic Affairs & Provost ~ Sheri Noren Everts .....	12
Vice President for Finance & Planning ~ Stephen M. Bragg .....	13
Vice President for Student Affairs ~ Steven L. Adams .....	14
Vice President for University Advancement ~ Dianne Ashby .....	15

### STUDENTS

#### New

Applications, Acceptances, & Enrollments ~ Fall 2008 .....	17
New Beginning Freshmen ~ Fall 2008 .....	18
American College Testing (ACT) ~ Fall 2002 through Fall 2008 .....	19
New Beginning Freshmen ~ Fall 2002 through Fall 2008 .....	20
New Undergraduate Transfers ~ Fall 2002 through Fall 2008 .....	21

#### Enrollment

Gender, Level, & Hours ~ Fall 2002 through Fall 2008 .....	22
College, Racial/Ethnic Designation & Level ~ Fall 2008 .....	23
College & Level ~ Fall 2002 and Fall 2008 .....	24
Racial/Ethnic Designation & Level ~ Fall 2002 and Fall 2008 .....	25
Class and Age ~ Fall 2008 .....	26
College and Gender ~ Fall 2002 and Fall 2008 .....	27
Non-Resident Alien Students ~ Fall 2002 and Fall 2008 .....	28
On-and Off-Campus & Class ~ Fall 2002 and Fall 2008 .....	29
Level ~ Fall 1998 through Fall 2008 .....	30
Class, Gender & Racial/Ethnic Designation ~ Fall 2008 .....	31
Class & Credit Hours ~ Fall 1998 through Fall 2008 .....	32



# TABLE OF CONTENTS (Continued)

## STUDENTS

### Enrollment (Continued)

Illinois Residents by County ~ Fall 2008 .....	33
State of Residence ~ Fall 2008 .....	34
Non-Resident Alien Students ~ Fall 2008 .....	35

### Degrees

College ~ Fiscal Year 2002 through Fiscal Year 2008 .....	36
Undergraduate, Gender & Racial/Ethnic Designation ~ Fiscal Year 2002 through Fiscal Year 2008 .....	37
Graduate, Level & Racial/Ethnic Designation ~ Fiscal Year 2002 through Fiscal Year 2008 .....	38

### Other

Class Size ~ Fall 2005 through Fall 2008 .....	39
Time-To-Degree ~ Fall 1997 through Fall 2004 .....	40
Retention and Graduation Rates .....	41

## FACULTY/STAFF

Employee Category Full-Time Equivalency ~ Fall 2007 and Fall 2008 .....	43
Type, Gender and Racial/Ethnic Designation ~ Fall 2008 .....	44
Rank and Racial/Ethnic Designation ~ Fall 2008 .....	45
Full-Time Equivalent (FTE) by College, Gender & Tenure Status ~ Fall 2007 and Fall 2008 .....	46
College & Percent Appointment ~ Fall 2002 through Fall 2008 .....	47
Tenured/Tenure Track Departmental Faculty, Age by Rank ~ Fall 2008 .....	48
Fall to Fall Retention Rates .....	49
Fall to Fall Retention Rates ~ Minority .....	50
Average Annual Salary by Rank ~ Fall 2002 through Fall 2007 .....	51

## RESOURCES

Total Expenditures & Mandatory Transfers ~ Fiscal Years 2004 through 2008 .....	53
Historical Appropriations and University Income Fund ~ Fiscal Years 2005 through 2009 .....	54
Current Funds Revenues by Source ~ Fiscal Years 2007 and 2008 .....	55
Sponsored Research, Instruction, Creative Works & Service ~ Fiscal Year 2005 through Fiscal Year 2008 .....	56
Student Financial Aid & Institutional Support ~ Fiscal Year 2008 .....	57
Undergraduate Student Tuition and Fee Rates ~ School Year 2006 through School Year 2008 .....	58
Graduate Student Tuition and Fee Rates ~ School Year 2000 through School Year 2008 .....	59

## REFERENCE

Undergraduate Program Inventory ~ Fall 2008 .....	61
Graduate Program Inventory ~ Fall 2008 .....	62
Peer Institutions .....	63



# TABLE OF CONTENTS (Continued)

## UNIVERSITY DEFINITIONS

Student Terms	.....	64
Employee Terms	.....	65
Other Terms	.....	66

## CAMPUS MAP



ILLINOIS STATE UNIVERSITY

# QUICK GLANCE

DID YOU KNOW?

Illinois State University was the first public university established in Illinois.

43 Students enrolled for the first term in fall 1857.





# QUICK GLANCE

## BOARD OF TRUSTEES & UNIVERSITY ADMINISTRATORS

### Board of Trustees

	<u>Term Expires</u>
Michael McCuskey - chair	January 2011
J. D. Bergman	January 2011
Anne Davis	January 2011
Bob Dobski	January 2013
Betty Kinser	January 2011
Joanne Maitland	January 2013
Vacant Position	
Geno Bagnuolo	Student Trustee

### Current Administrators

Al Bowman	President
Sheri Noren Everts	Vice President of Academic Affairs and Provost
Stephen M. Bragg	Vice President for Finance and Planning
Steven L. Adams	Vice President for Student Affairs
Dianne Ashby	Vice President for University Advancement

### Past and Current Presidents

Charles E. Hovey	1857-1862	Samuel J. Braden	1967-1970
Richard Edwards	1862-1876	David K. Berlo	1971-1973
Edwin C. Hewett	1876-1890	Gene A. Budig	1973-1977
John W. Cook	1890-1899	Lloyd Watkins	1977-1988
Arnold Thompkins	1899-1900	Thomas Wallace	1988-1995
David Felmley	1900-1930	David A. Strand	1995-1999
Harry A. Brown	1930-1933	Victor John Boschini Jr.	1999-2003
Raymond W. Fairchild	1933-1955	C. Alvin Bowman	2003-Present
Robert G. Bone	1956-1967		



# QUICK GLANCE

## DEANS, DEPARTMENT CHAIRS, AND SCHOOL DIRECTORS~ FALL 2008

### Applied Science and Technology

Agriculture  
 School of Information Technology  
 Criminal Justice Sciences  
 School of Kinesiology and Recreation  
 Health Sciences  
 Family and Consumer Sciences  
 Technology  
 Military Science

### Arts and Sciences

Biological Sciences  
 Chemistry  
 Economics  
 English  
 Languages, Literatures and Cultures  
 Geography-Geology  
 History  
 School of Communication  
 Mathematics  
 Philosophy  
 Physics  
 Politics and Government  
 Psychology  
 School of Social Work  
 Sociology and Anthropology  
 Communication Sciences & Disorders

### Dr. Jeffery A. Wood

Dr. Robert Rhykerd \*  
 Dr. Terry L. Dennis  
 Dr. David Falcone \*  
 Dr. David Q. Thomas \*  
 Dr. Francis L Waterstraat Jr. \*  
 Dr. Connor M. Walters  
 Dr. Richard A. Boser  
 Lt. Col. Raymond Hart

### Dr. Gary A. Olson

Dr. H. Tak Cheung  
 Dr. Clifford E. Dykstra  
 Dr. James Payne  
 Dr. Joan A. Mullin  
 Dr. Daniel L. Everett  
 Dr. David H. Malone  
 Dr. Diane Zosky \*  
 Dr. Larry W. Long  
 Dr. George F. Seelinger  
 Dr. James Swindler  
 Dr. Richard F. Martin, Jr.  
 Dr. Ali Riaz  
 Dr. Michael Leippe  
 Dr. Wanda Bracy  
 Dr. Fred H. Smith  
 Dr. Joseph Smaldino

### Business

Accounting  
 Finance, Insurance and Law  
 Management & Quantitative Methods  
 Marketing

### Education

Curriculum and Instruction  
 Educational Administration & Foundations  
 Special Education

### Fine Arts

School of Art  
 School of Music  
 School of Theatre

### Mennonite College of Nursing

### University Libraries

### Dr. Charles McGuire \*

Dr. Gerald McKean \*  
 Dr. Gary Koppenhaver  
 Dr. Jawahr Mohammed  
 Dr. Timothy A. Longfellow

### Dr. Deborah J. Curtis

Dr. Phyllis Metcalf  
 Dr. Patricia H. Klass  
 Dr. Jeffrey Bakken \*

### Dr. James Major

Dr. Anthony Crowley  
 Dr. Stephen B. Parsons  
 Dr. John Poole \*

### Dr. Sara Campbell \*

### Ms. Cheryl A. Elzy

\* Acting/Interim





# QUICK GLANCE

## UNIVERSITY FACTS ~ FALL 2008

### On-Campus Headcount Enrollment

Undergraduate	17,949
Graduate	2,501
Total	20,450

### Enrollment by Gender

Male	8,676
Female	11,774

### Enrollment by Racial/Ethnic Designation

Am. Indian/Alaskan Native	74
Black/Non-Hispanic	1,043
Asian/Pacific Islander	400
Hispanic	708
White/Non-Hispanic	17,059
Not Reported	791
Non-Resident Alien	375

### New Students Fall 2008

Beginning Freshmen Cohort	3,394
Average ACT score	23.9
4-Year College Transfers	384
Community College Transfers	1,320

### Degrees Conferred in Fiscal Year 2008

Baccalaureate	4,186
Masters	663
IBHE Approved Certificates	34
Doctoral	56
Total	4,939

### Graduate Certificates Awarded

### Persistence and Graduation Rates

Freshmen returning for second fall.	83.3%
6-Year Graduation rate (before 7th fall).	69.9%

### Living Alumni

Illinois	112,845
Other U.S. States	42,843
Foreign Countries	910
Locations Unknown	16,531
Total	173,129

### Student Financial Aid

Seventy-three percent (14,738) of all students received financial support in Fiscal Year 2008.

### Student Housing

28.6 percent of students live in the residence halls; another 1.4 percent live in University-owned housing

### University Employees

Departmental Faculty	1,183
Non-Departmental Faculty	27
Library Faculty	30
Lab School Faculty	98
Managerial/Administrative	68
Professional	633
Civil Service	1,442
Total	3,481

### Milner Library Holdings

Volumes	1,610,271
Printed and electronic periodicals	40,936

### Research and Sponsored Programs

Proposals Awarded	232
Funds Awarded	\$22.3 million

### Grounds, Buildings, and Facilities

Approximately 970 acres; 143 buildings. The estimated replacement value of the facilities is \$1.1 billion.

### Fall 2008 Tuition & Fees Per Credit Hour -

#### New Students (State Resident)

Undergraduate	\$316.40
Graduate	\$264.40

### Fiscal Year 2008 Operating Expenditures

\$310.8 million

### University Accreditation Agencies

Higher Learning Commission of the North Central Association of Colleges and Schools; and National Council for Accreditation of Teacher Education.

### Student to Faculty Ratio

19:1

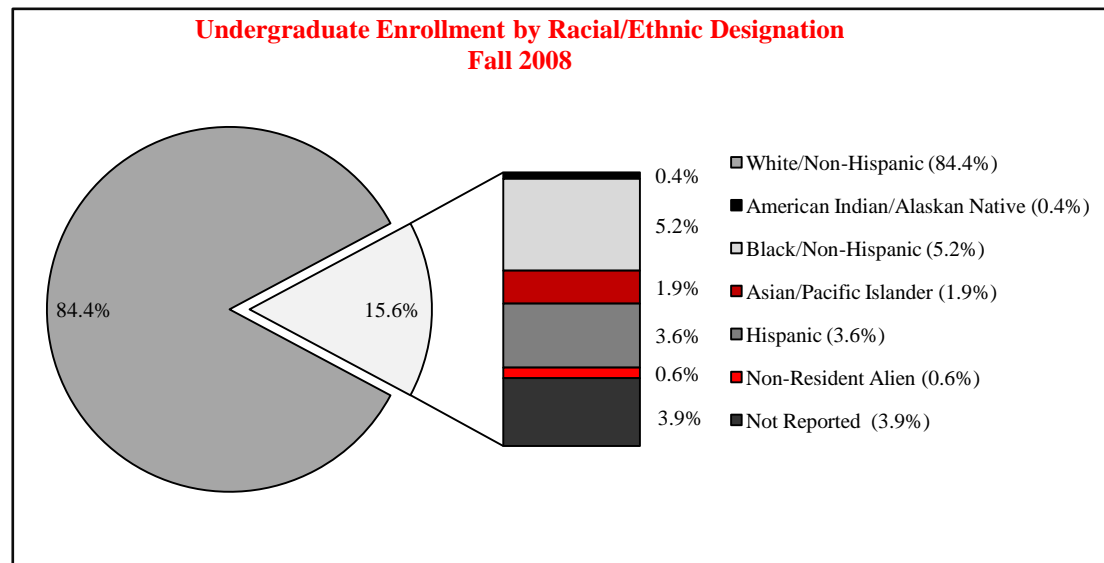
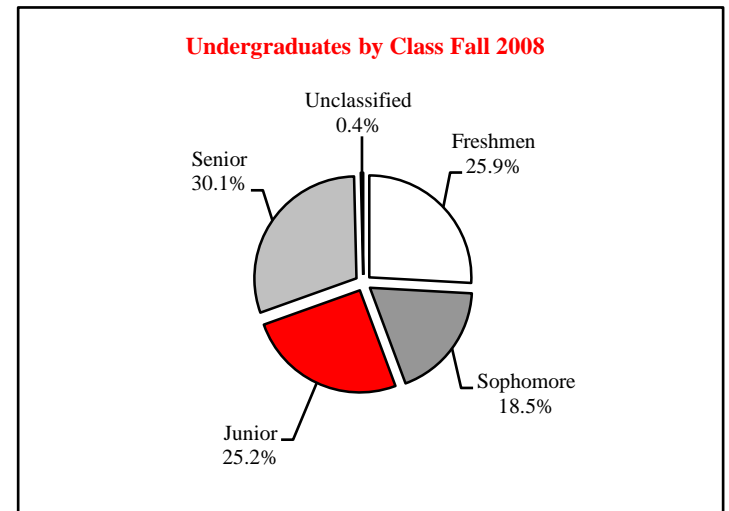


# QUICK GLANCE

<u>Class</u>	<u>Average Age</u>	<u>Headcount</u>	<u>FTE</u> <sup>1</sup>
Freshmen	18.4	4,644	4,498
Sophomore	19.8	3,312	3,189
Junior	21.3	4,525	4,212
Senior	23.2	5,400	4,689
Unclassified	24.0	68	39
<b>Total</b>	<b>20.8</b>	<b>17,949</b>	<b>16,627</b>

<sup>1</sup> Undergraduate Full-time Equivalency (FTE) credit hours divided by 15.

## UNDERGRADUATE STUDENTS ~ FALL 2008



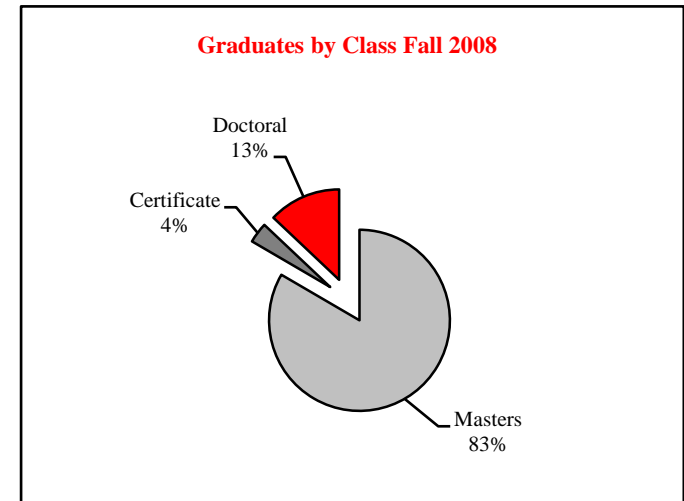
<u>Racial/Ethnic Designation</u>	<u>Headcount</u>
American Indian/Alaskan Native	67
Black/Non-Hispanic	939
Asian/Pacific Islander	338
Hispanic	655
White/Non-Hispanic	15,146
Not Reported	695
Non-Resident Alien	109
<b>Total</b>	<b>17,949</b>



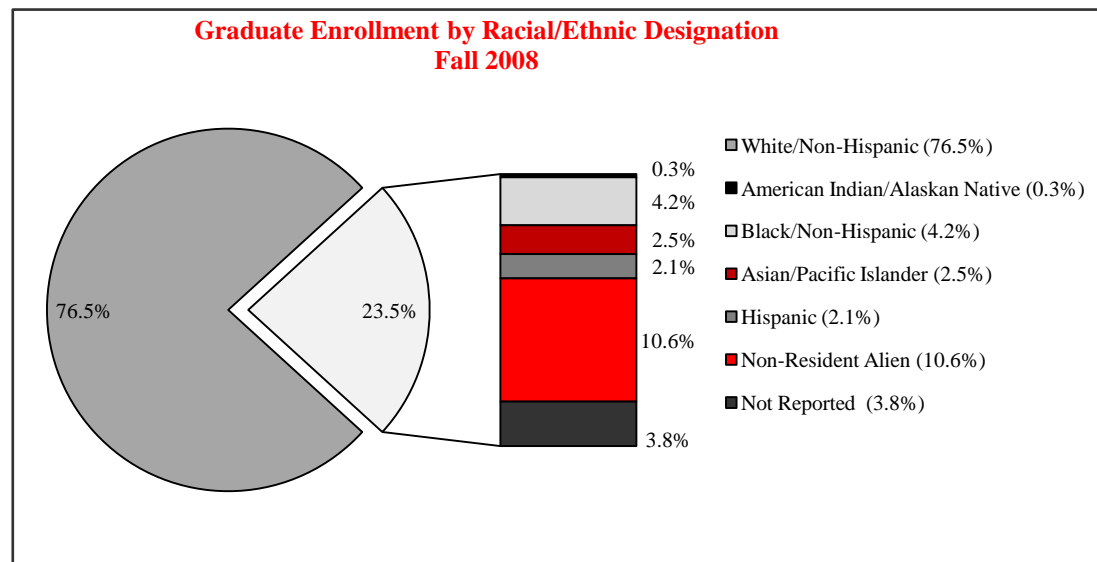
# QUICK GLANCE

## GRADUATE STUDENTS ~ FALL 2008

<u>Class</u>	<u>Average Age</u>	<u>Headcount</u>	<u>FTE</u> <sup>1</sup>
Masters	29.8	2,086	1,564
Certificate	33.0	91	53
Doctoral	36.7	324	215
Total	30.8	2,501	1,833



<sup>1</sup> Graduate Full-time Equivalency (FTE) credit hours divided by 9.



<u>Racial/Ethnic Designation</u>	<u>Headcount</u>
American Indian/Alaskan Native	7
Black/Non-Hispanic	104
Asian/Pacific Islander	62
Hispanic	53
White/Non-Hispanic	1,913
Not Reported	96
Non-Resident Alien	266
Total	2,501

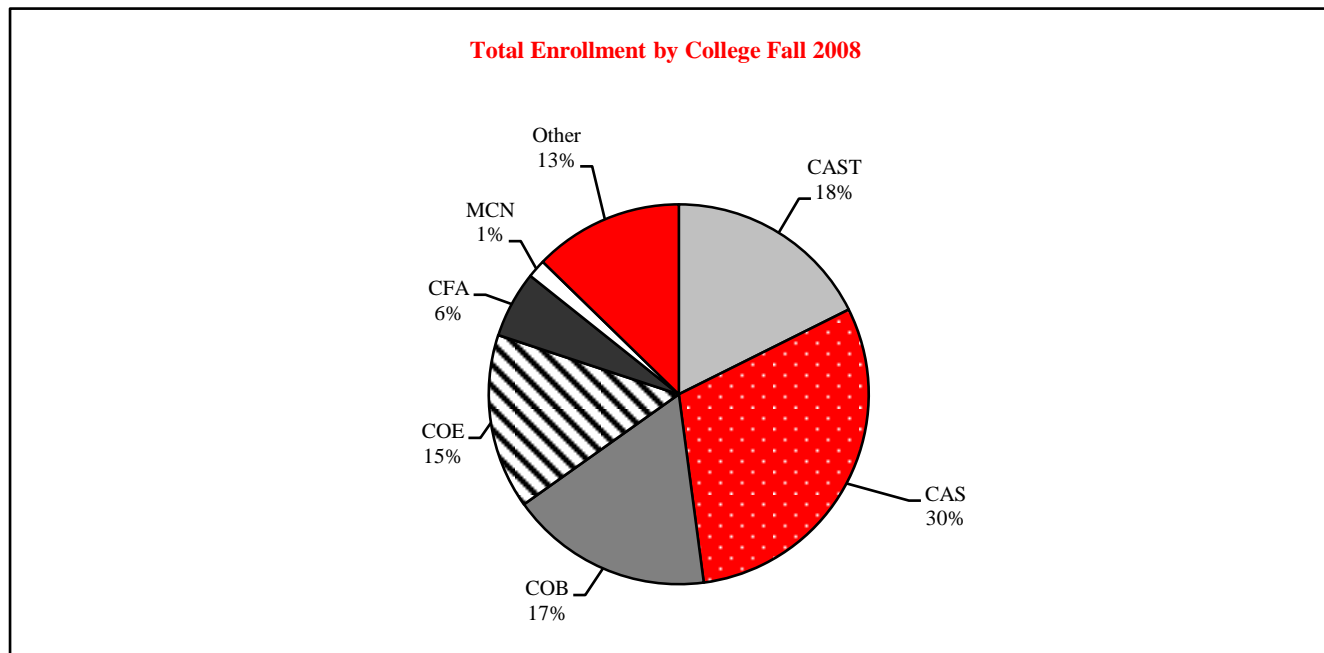


# QUICK GLANCE

## COLLEGE ENROLLMENT BY RACIAL/ETHNIC DESIGNATION ~ Fall 2008

	American Indian/ Alaskan Native	Black/Non- Hispanic	Asian/Pacific Islander	Hispanic	White/Non- Hispanic	Non-Resident Alien	Not Reported	Total
<u>All Students</u>								
Applied Science and Technology	14	184	48	114	3,038	97	112	3,607
Arts and Sciences	25	325	128	236	5,042	143	290	6,189
Business	11	163	91	104	2,993	52	116	3,530
Education	7	93	42	98	2,700	15	88	3,043
Fine Arts	3	44	24	38	950	22	79	1,160
Mennonite College of Nursing	--	8	3	2	298	1	9	321
Other <sup>1</sup>	14	226	64	116	2,038	45	97	2,600
Total	74	1,043	400	708	17,059	375	791	20,450

<sup>1</sup> Other includes: Unclassified, Interdisciplinary Studies, Student-at-Large, Undeclared, and University Studies.





# QUICK GLANCE

## DEPARTMENTAL FACULTY CHARACTERISTICS ~ FALL 2008

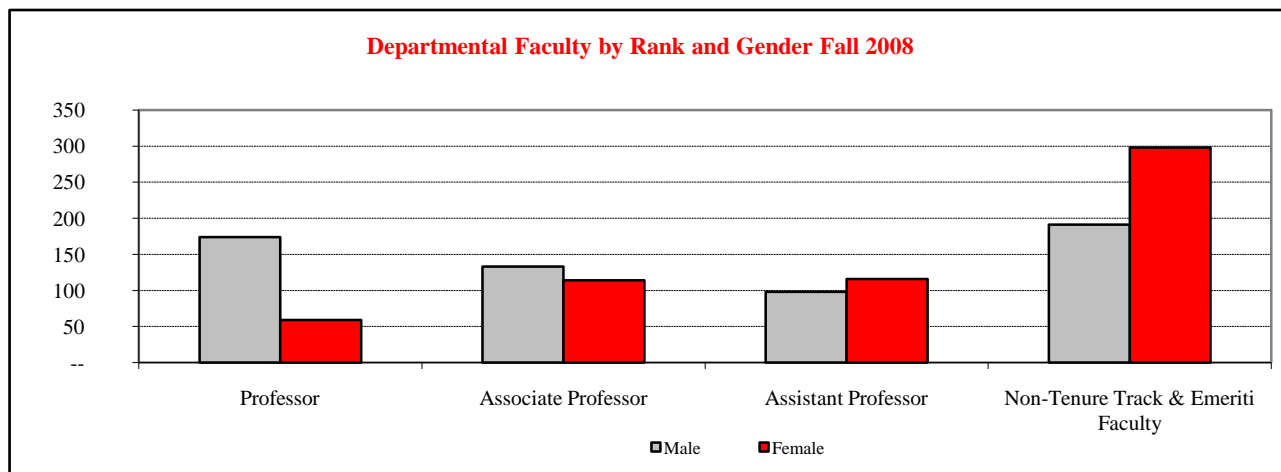
<u>Rank</u>	<u>Gender</u>		
	<u>Male</u>	<u>Female</u>	<u>Total</u>
Professor	174	59	233
Associate Professor	133	114	247
Assistant Professor	98	116	214
Other <sup>1</sup>	191	298	489
Total	596	587	1,183

<u>Rank</u>	<u>Percent Appointment</u>		
	<u>Full-Time</u>	<u>Part-Time</u>	<u>Total</u>
Professor	233	--	233
Associate Professor	247	--	247
Assistant Professor	214	--	214
Other <sup>1</sup>	165	324	489
Total	859	324	1,183

<u>Racial/Ethnic Designation</u>	<u>Number</u>	<u>Percent</u>
American Indian/Alaskan Native	3	0.3
Black/Non-Hispanic	35	3.0
Asian/Pacific Islander	65	5.5
Hispanic	25	2.1
White/Non-Hispanic	1,028	86.9
Non-Resident Alien	23	1.9
Unknown	4	0.3
Total	1,183	100.0

<u>Years of Service</u>	<u>Tenure Status</u>		
	<u>Track</u>	<u>Non-Tenure</u>	<u>Total</u>
0-3 Years	151	309	460
4-6 Years	119	47	166
7-9 Years	116	52	168
10-14 Years	98	43	141
15-19 Years	83	20	103
20 or More Years	127	18	145
Total	694	489	1,183

<sup>1</sup> Non-Tenure Track & Emeriti Faculty





## QUICK GLANCE

## EDUCATING ILLINOIS: Priorities for Illinois' first public university 2008-2014

Illinois State University - Illinois' first public university - is an institution of first choice for increasing numbers of academically talented and motivated students. The university maintains strong, mutually reinforcing commitments to scholarship, and to undergraduate and graduate education.

The University's strategic plan, *Educating Illinois 2008-2014: Priorities for Illinois' First Public University*, builds upon the University's heritage, strengths, and recent accomplishments. The plan advances the Board of Trustees' vision statement for the University, and it reflects extensive consultation with individuals from throughout the Illinois State University community.

**Our Mission:** We at Illinois State University work as a diverse community of scholars with a commitment to fostering a small-college atmosphere with large-university opportunities. We promote the highest academic standards in our teaching, scholarship, public service and the connections we build among them. We devote all of our resources and energies to creating the most supportive and productive community possible to serve the citizens of Illinois and beyond.

**Our Vision:** Illinois State University will continue to occupy a unique position of strength and visibility among the institutions of higher education in Illinois, the nation, and the world. Illinois State University will continue to be the first-choice public university in Illinois for high-achieving, motivated students who seek an individualized educational experience at an institution that offers excellent undergraduate and graduate programs and supports high-quality research, scholarship, and creative activities.

### Our Values:

**Pursuit of Learning and Scholarship:** Illinois State University works with students as partners in their educational development inside and outside of the classroom, so that students come to appreciate learning as an active and lifelong process. The University contributes new knowledge through research, scholarship, and creative activities, as well as other forms of individual scholarship in which all students, faculty, and staff are encouraged to participate.

**Individualized Attention:** Illinois State University provides a supportive environment. An innovative General Education program, strong student-faculty-staff connections, and superior student services focus on each student as an individual, with unique educational needs and potential. The University is dedicated to placing the learner at the center of teaching and scholarship, to recognizing the importance of each faculty and staff member to the successful operation of the programs and services provided, and to acknowledging the on-going contributions of its former students, faculty, and staff.

**Public Opportunity:** Illinois State University assures students access to educational, research, and service opportunities through a wide range of high quality programs; faculty mentors who are scholars and creative artists of repute in their disciplines; and the support of outstanding facilities, technologies, and library resources. The University partners with business, industry, government, and education providing leadership in statewide, national, and international initiatives; expanding service and outreach; and enhancing financial support for instructional, scholarship, and service activities.

**Diversity:** Illinois State University affirms and encourages community and an informed respect for differences among students, faculty, and staff by fostering an inclusive environment characterized by ethical behavior and social justice that prepares students to be fully engaged participants in a global society. The University supports a diverse faculty and staff who mentor a diverse student population. The University endeavors to create a varied and inclusive community where all students, staff, and faculty are active participants in a global society characterized by teamwork, respect for differences, civic engagement, and educational goals which celebrate diversity.

**Civic Engagement:** Illinois State University prepares students to be informed and engaged citizens who will promote and further the collective goals of society. The University promotes active learning experiences through which students will gain an awareness and understanding of civic engagement as a lifelong responsibility. Furthermore, the University encourages faculty and staff to serve as engaged civic leaders and role models promoting the quality of life for all citizens through collaborative and individual action.



## QUICK GLANCE

## ENDOWED CHAIRS ~ FALL 2008

Endowed chairs are a hallmark of a great university. The tradition of an endowed chair in education dates back to 1502 when the mother of Henry VII established the Lady Margaret Professorship of Divinity at Oxford. More than 200 years later the first endowed chair was established in America, the Hollis Professorship of Divinity created in 1721 at Harvard.

Endowed chairs offer many benefits to the donor, the honored scholar and students. An endowed chair offers Illinois State University the opportunity to offer a more diverse curriculum that is not dependent on usual income sources such as tuition and state funds. Endowed chairs also offer the means to attract, retain and honor distinguished faculty.

The esteemed scholars who are endowed chairs receive recognition for personal achievements in their fields and the satisfaction that the University supports research and teaching in their discipline. Students are challenged and guided by exposure to the highest quality academic leadership.

Donors who generously have endowed chairs know that they are not only ensuring academic excellence in teaching and research today, but that their donation is truly a gift to the future of the University. Endowed chairs are living memorials, perpetuating the donor's name and signifying a permanent commitment to quality education.

Illinois State University has the following Endowed Chairs:

Tom and Janet Andes Endowed Chair for General Education (established 2001), Dr. Kenton Machina (2001-2005) (currently vacant)

K. Patricia Cross Endowed Chair in the Scholarship of Teaching and Learning (established 2001), Dr. Kathleen McKinney (2002-present)

Kara Peters Endowed Chair in Special Education Assistive Technology (established 2002), Dr. Phil Parette (2003-present)

Edmundson-Miller Endowed Chair of Insurance and Risk Management (established 2002), Dr. Richard MacMinn (2002-present)







ILLINOIS STATE UNIVERSITY

# ORGANIZATIONAL CHARTS

DID YOU KNOW?

Old Main, the University's first building, was opened in 1860 and dominated the campus for nearly 100 years.

The first Illinois State University classroom was in Major's Hall in downtown Bloomington.



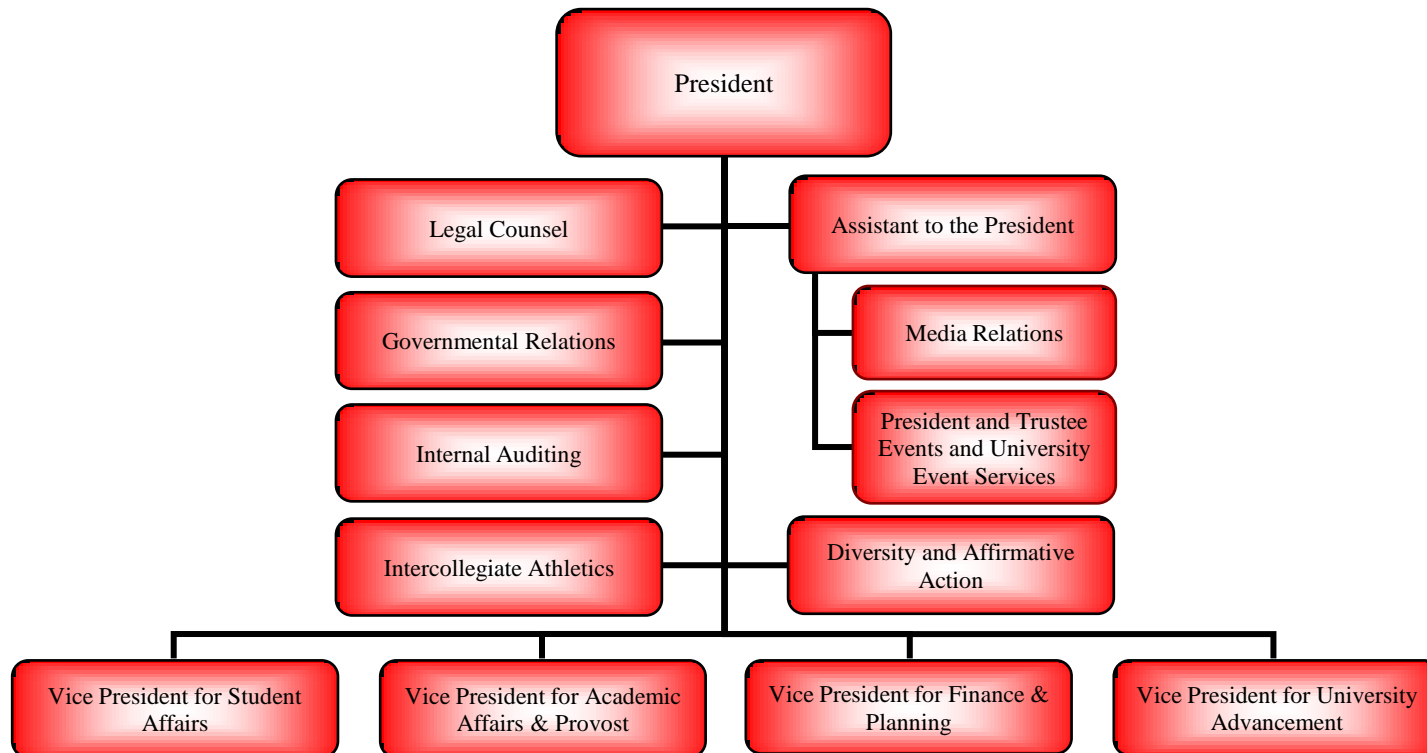
Hovey Hall



# ORGANIZATIONAL CHARTS

PRESIDENT ~ AL BOWMAN

Al Bowman is President of Illinois State University. Dr. Bowman joined Illinois State University in 1978 as a faculty member in Speech Pathology and Audiology. He was appointed Chairperson of Speech Pathology and Audiology in 1994 and served as Interim Provost during the 2002-2003 academic year. Bowman received a bachelor's degree in Speech Pathology from Augustana College in Rock Island, Illinois. He earned a master's degree from Eastern Illinois University and a Ph.D. in Speech and Hearing Science from the University of Illinois-Urbana/Champaign. Dr. Bowman is a member of the Chicago Education Alliance, the American Speech-Language-Hearing Association, and the American Council on Education's Commission on Women in Higher Education. He serves on the board of directors for Chestnut Health Systems, BroMenn Healthcare, and the McLean County Museum of History. He is also a member of the NCAA's Division I-AA/I-AAA Presidential Advisory Group.

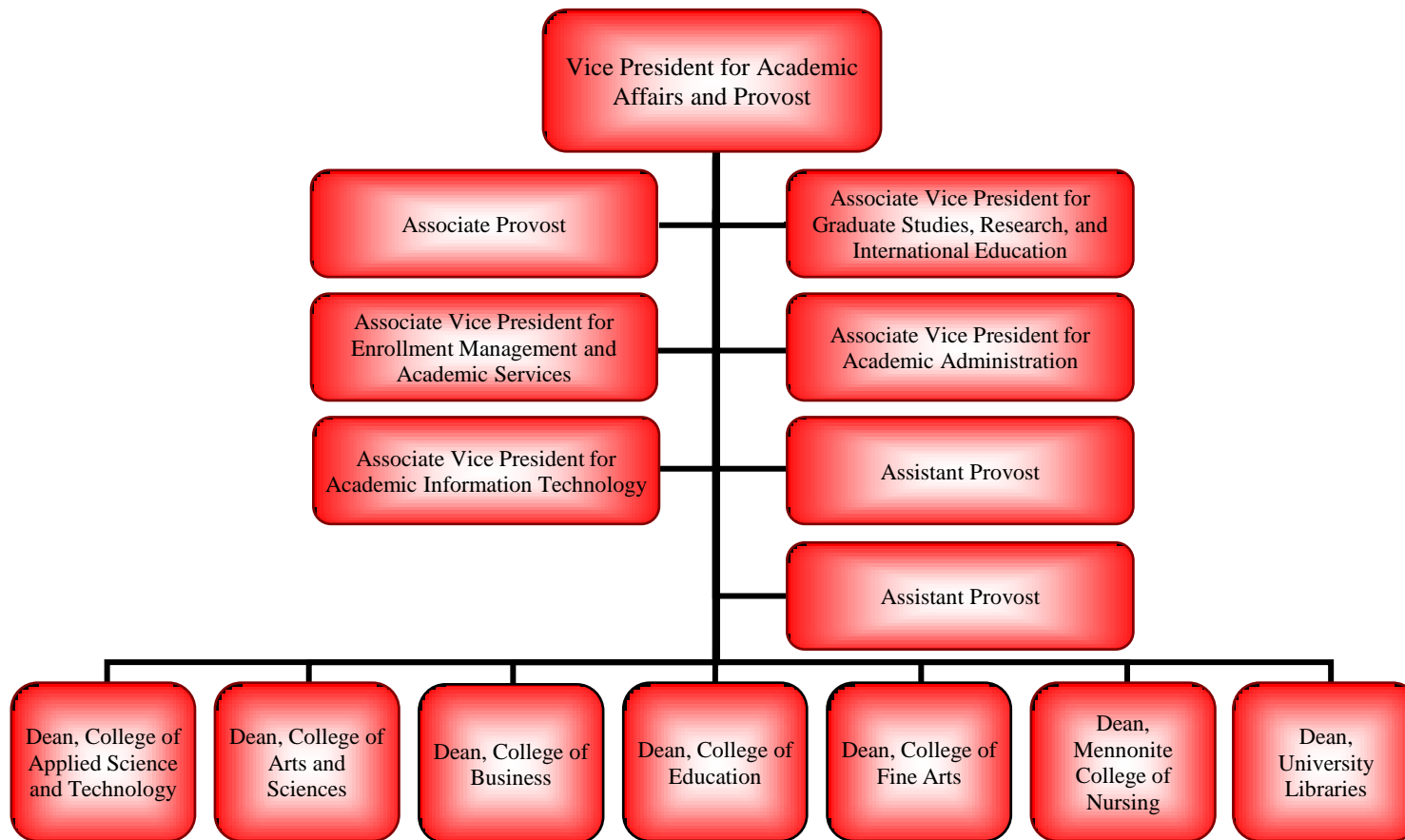




# ORGANIZATIONAL CHARTS

## VP ACADEMIC AFFAIRS & PROVOST ~ SHERI EVERTS

Sheri Noren Everts is the Vice President for Academic Affairs and Provost at Illinois State University. Previously she served as Interim Senior Vice Chancellor for Academic and Student Affairs, acting Vice Chancellor, and Associate Vice Chancellor at the University of Nebraska at Omaha (UNO). Everts has co-authored two books, has published numerous articles, and made over 200 professional presentations on assessment and portfolios. She received her bachelor's degree in English and Secondary Education, master's degree in Literacy Education and English, and Ph.D. in Administration, Curriculum and Instruction from the University of Nebraska-Lincoln.

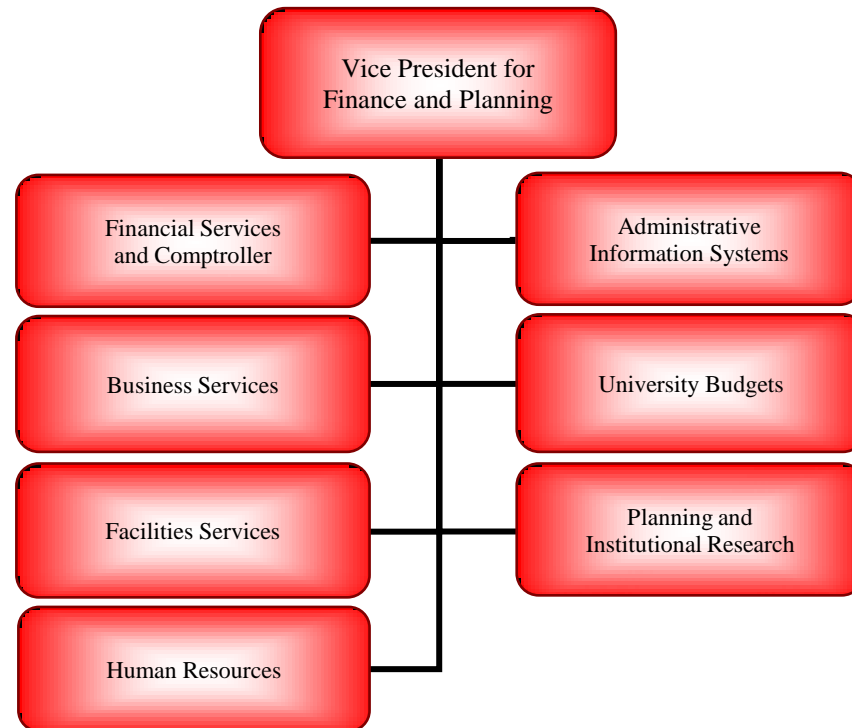




# ORGANIZATIONAL CHARTS

## VP for FINANCE & PLANNING - STEPHEN M. BRAGG

Stephen M. Bragg, Vice President for Finance and Planning, joined Illinois State University in 1994, serving first as Director of Planning, Policy Studies, and Information Systems, and later as Assistant Vice President for Budget and Planning. Prior to joining Illinois State University, Dr. Bragg held staff positions in fiscal affairs, academic affairs, and information systems at the Illinois Board of Higher Education (1981 - 1994). He also was Assistant Director of the Center for the Study of Higher Education at The Pennsylvania State University (1980 - 1981). He has a baccalaureate degree from the University of California at Berkeley and master's and doctorate degrees from The Pennsylvania State University.

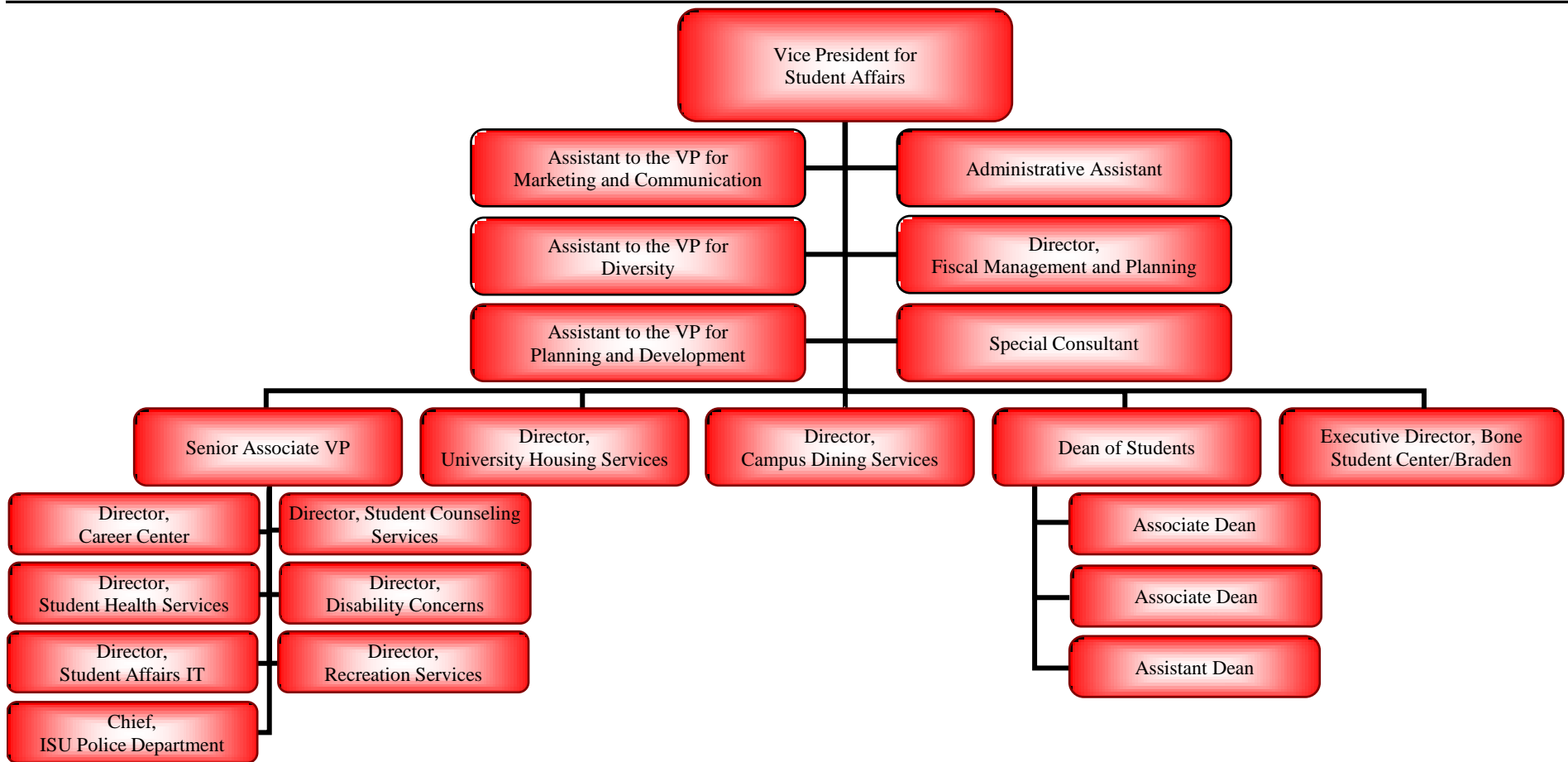




# ORGANIZATIONAL CHARTS

## VP for STUDENT AFFAIRS - STEVEN L. ADAMS

Steve Adams became Vice President for Student Affairs in July, 2006. He has spent his entire 32-year career at Illinois State University, having served in major administrative positions in Academic Affairs prior to his appointment as Student Affairs Vice President. Mr. Adams formerly served as Assistant Vice President for Enrollment Management and Academic Services and as Director of Admissions. He served interim roles as Director of Financial Aid and Director of Enrollment Management. He received the lifetime achievement award from the Illinois Association for College Admission Counseling, the distinguished service award from the Illinois Association for College Admission Counseling, the distinguished service award from the Illinois American College Testing (ACT) Council, and is a member of the Illinois Basketball Hall of Fame and Illinois State University Athletics Hall of Fame as the recipient of the Stretch Miller award. He earned his baccalaureate degree in Business Administration from Illinois Wesleyan University, completed graduate work in Counselor Education at Illinois State University, and was a Fellow in the Education Policy Fellowship Program in Washington, DC.

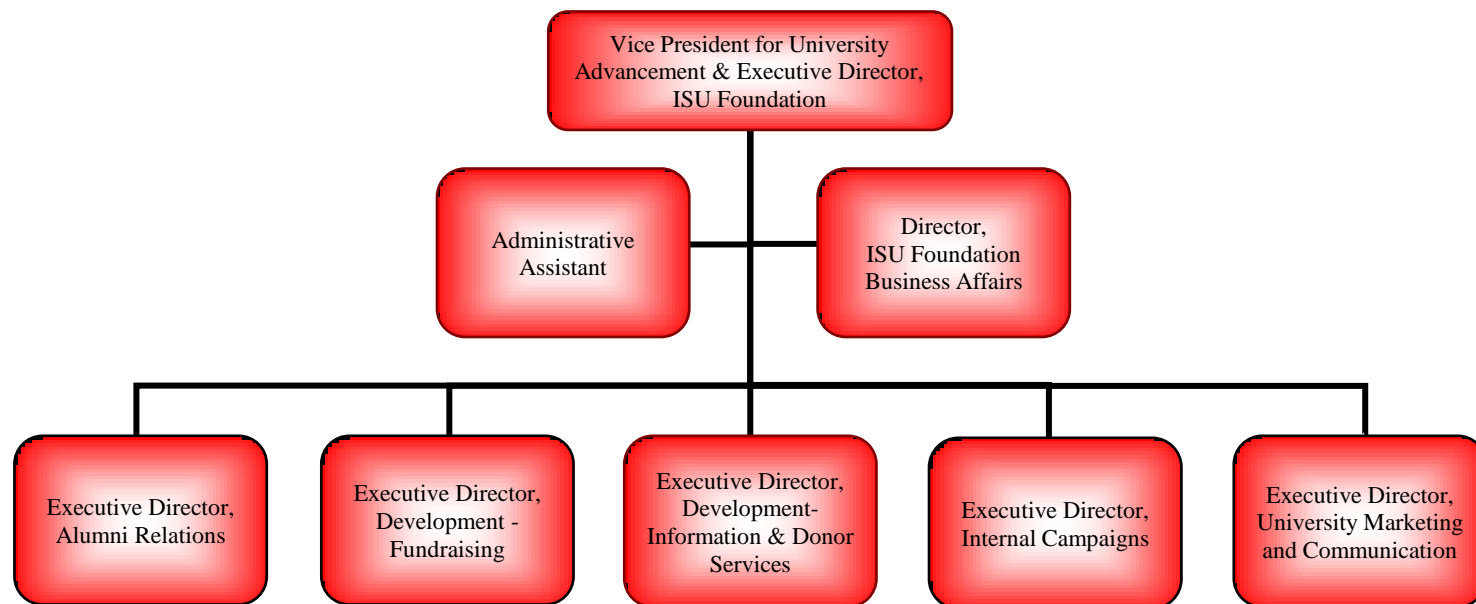




# ORGANIZATIONAL CHARTS

## VP for UNIVERSITY ADVANCEMENT - DIANNE ASHBY

Dianne Ashby became Vice President for University Advancement and Executive Director of Illinois State University Foundation in July 2005. Dr. Ashby served as professor and the Dean of the College of Education at Illinois State University. She has been a school administrator for the Illinois Department of Corrections, staff to the Illinois State Board of Education, principal of University High School (Illinois State University), and chair of the Department of Educational Administration and Foundations at Illinois State. She earned her bachelor's degree in Speech and Theatre Arts from MacMurray College, her master's degree in Educational Administration from the University of Illinois-Springfield (then Sangamon State), and her doctorate in Educational Administration from Southern Illinois University-Carbondale.







ILLINOIS STATE UNIVERSITY

# STUDENTS

DID YOU KNOW?

Illinois State University enrollment increased from 4,469 in 1960 to 17,549 in 1970.

The number of enrolled students has remained stable since the 1970's, reaching a peak of 22,241 in 1989.







# STUDENTS ~ NEW

## APPLICATIONS, ACCEPTANCES, & ENROLLMENTS - FALL 2008

<u>Racial/Ethnic Designation</u>	<u>New Beginning Freshmen</u>			<u>New Beginning Freshmen</u>	
	<u>Applications</u>	<u>Acceptances</u>	<u>Enrollments</u>	<u>Yield Rate</u>	<u>Show Rate</u>
American Indian/Alaskan Native	70	34	17	49%	50%
Black/Non-Hispanic	2,001	650	187	32	29
Asian/Pacific Islander	401	287	80	72	28
Hispanic	795	463	154	58	33
White/Non-Hispanic	9,781	6,934	2,840	71	41
Not Reported	461	305	110	66	36
Non-Resident Alien	40	26	6	65	23
Total	13,549	8,699	3,394	64	39

<u>Racial/Ethnic Designation</u>	<u>New Undergraduate Transfer Students (excludes Unclassified)</u>			<u>New Undergraduate Transfer Students (excludes Unclassified)</u>	
	<u>Applications</u>	<u>Acceptances</u>	<u>Enrollments</u>	<u>Yield Rate</u>	<u>Show Rate</u>
American Indian/Alaskan Native	22	15	7	68%	47%
Black/Non-Hispanic	189	123	47	65	38
Asian/Pacific Islander	107	80	37	75	46
Hispanic	138	98	48	71	49
White/Non-Hispanic	3,062	2,539	1,472	83	58
Not Reported	175	148	79	85	53
Non-Resident Alien	31	25	14	81	56
Total	3,724	3,028	1,704	81	56

<u>Racial/Ethnic Designation</u>	<u>New Graduate Students</u>			<u>New Graduate Students</u>	
	<u>Applications</u>	<u>Acceptances</u>	<u>Enrollments</u>	<u>Yield Rate</u>	<u>Show Rate</u>
American Indian/Alaskan Native	10	4	3	40%	75%
Black/Non-Hispanic	77	37	24	48	65
Asian/Pacific Islander	44	26	13	59	50
Hispanic	44	30	21	68	70
White/Non-Hispanic	1,133	739	458	65	62
Not Reported	100	69	41	69	59
Non-Resident Alien	483	208	72	43	35
Total	1,891	1,113	632	59	57



# STUDENTS ~ NEW

<u>ACT Composite</u>	<u>Number</u>	<u>Percent</u>	<u>Cumulative</u>
30-36	136	4.0	4.0
26-29	764	22.5	26.5
23-25	1,355	39.9	66.4
20-22	1,006	29.6	96.1
18-19	105	3.1	99.2
16-17	12	0.4	99.5
1-15	--	--	99.5
Not Reported	16	0.5	100.0

# NEW BEGINNING FRESHMEN ~ FALL 2008

<u>Top Illinois Counties</u>	<u>Number</u>
Cook	1,043
DuPage	490
Will	362
Lake	287
Kane	148
McHenry	135
McLean	117
Winnebago	64
Champaign	64
Tazewell	60
Sangamon	60
Kankakee	38
Kendall	37

<u>Fall Term</u>	<u>ACT Interquartile</u>	<u>Composite Scores By College</u>	<u>Fall Terms</u>				
			<u>2004</u>	<u>2005</u>	<u>2006</u>	<u>2007</u>	<u>2008</u>
2008	22-26	Applied Science & Technology	23.5	23.5	23.6	24.0	23.7
2007	22-26	Arts & Sciences	24.9	24.8	24.9	24.8	24.4
2006	22-26	Business	23.7	23.9	24.0	24.0	23.9
2005	22-26	Education	23.8	24.1	24.0	24.3	23.7
2004	22-26	Fine Arts	24.9	24.5	25.2	24.5	24.9
		Mennonite College of Nursing	24.0	24.2	26.2	26.7	26.4
		Other Majors <sup>1</sup>	22.5	22.2	22.6	23.1	23.1
		University	23.9	23.8	23.9	24.2	23.9

<sup>1</sup> Includes General Student and General Studies; Excludes Unclassified Students.

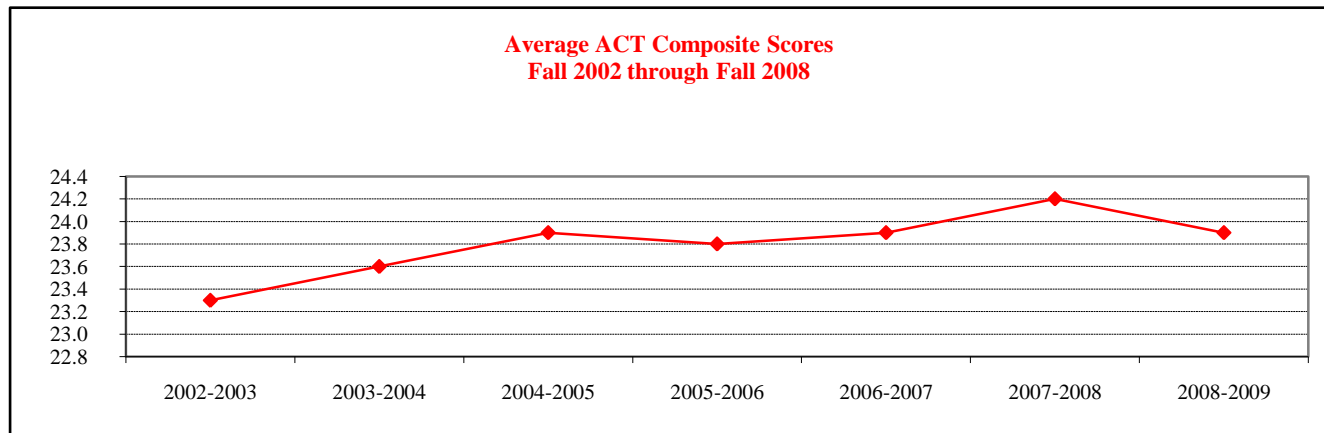


# STUDENTS ~ NEW

# AMERICAN COLLEGE TESTING (ACT) SCORES ~ FALL 2002 - FALL 2008

<u>Subscores and Composite</u>	<u>2002-2003</u>	<u>2003-2004</u>	<u>2004-2005</u>	<u>2005-2006</u>	<u>2006-2007</u>	<u>2007-2008</u>	<u>2008-2009</u>
English	23.1	23.4	23.7	23.8	24.1	24.2	24.0
Math	23.0	23.1	23.5	23.4	23.5	23.7	23.6
Reading	23.9	23.9	24.5	24.1	24.4	24.6	24.2
Science	22.8	23.2	23.1	23.2	23.1	23.5	23.2
Composite	23.3	23.6	23.9	23.8	23.9	24.2	23.9

<u>Composite Scores By College</u>	<u>2002-2003</u>	<u>2003-2004</u>	<u>2004-2005</u>	<u>2005-2006</u>	<u>2006-2007</u>	<u>2007-2008</u>	<u>2008-2009</u>
Applied Science & Technology	23.3	23.6	23.5	23.5	23.6	24.0	23.7
Arts & Sciences	24.3	24.6	24.9	24.8	24.9	24.8	24.4
Business	23.3	23.7	23.7	23.9	24.0	24.0	23.9
Education	23.0	23.8	23.8	24.1	24.0	24.3	23.7
Fine Arts	24.2	24.3	24.9	24.5	25.2	24.5	24.9
Mennonite College of Nursing	22.4	22.7	24.0	24.2	26.2	26.7	26.4
Other Majors	22.4	22.1	22.5	22.2	22.6	23.1	23.1
Total	23.3	23.6	23.9	23.8	23.9	24.2	23.9





# STUDENTS ~ NEW

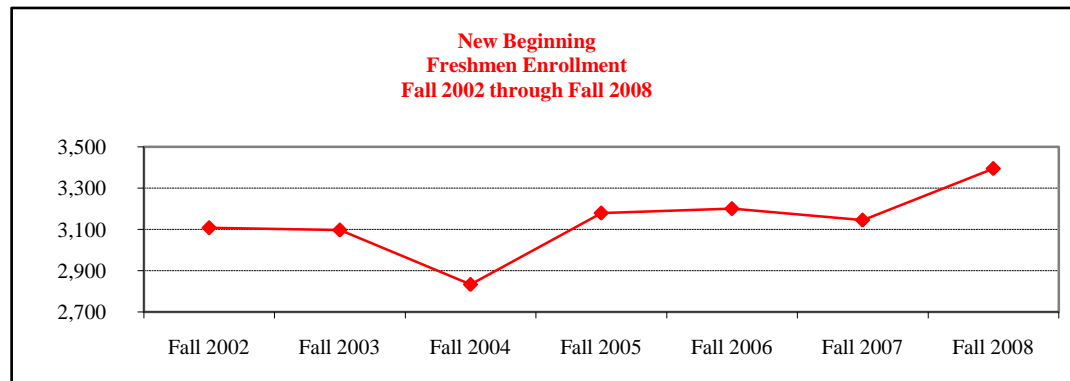
# NEW BEGINNING FRESHMEN ~ FALL 2002 through FALL 2008

Average ACT Composite Scores						Percent Graduating from High School Class			
	All Students <sup>1</sup>			Core Curriculum <sup>1</sup>			Top 10%	Top <sup>2</sup> Quartile	Second Quartile
	Illinois State University			Illinois National					
	University	Illinois	National	Illinois	National				
Fall 2004	23.9	20.3	20.9	22.4	21.9	Fall 2004	10.8	38.0	43.1
Fall 2005	23.8	20.3	20.9	22.5	21.9	Fall 2005	11.0	36.3	42.8
Fall 2006	23.9	20.5	21.1	22.4	21.9	Fall 2006	11.3	37.0	41.1
Fall 2007	24.2	20.5	21.2	22.5	22.0	Fall 2007	11.4	36.7	40.1
Fall 2008	23.9	20.7	21.1	22.4	22.0	Fall 2008	N/A	N/A	N/A

<sup>1</sup> Core curriculum is 4 years English; 3 years each Math, Social Sciences, & Natural Science.

<sup>2</sup> Top Quartile includes the top 10%.

Racial/Ethnic Designation	Enrollment						
	Fall 2002	Fall 2003	Fall 2004	Fall 2005	Fall 2006	Fall 2007	Fall 2008
American Indian/Alaskan Native	5	11	13	5	14	14	17
Black/Non-Hispanic	175	248	219	232	212	187	187
Asian/Pacific Islander	40	52	55	62	58	61	80
Hispanic	97	126	97	131	126	127	154
White/Non-Hispanic	2,770	2,645	2,297	2,548	2,690	2,652	2,840
Not Reported	--	--	134	192	92	101	110
Non-Resident Alien	21	15	19	9	8	3	6
Total	3,108	3,097	2,834	3,179	3,200	3,145	3,394



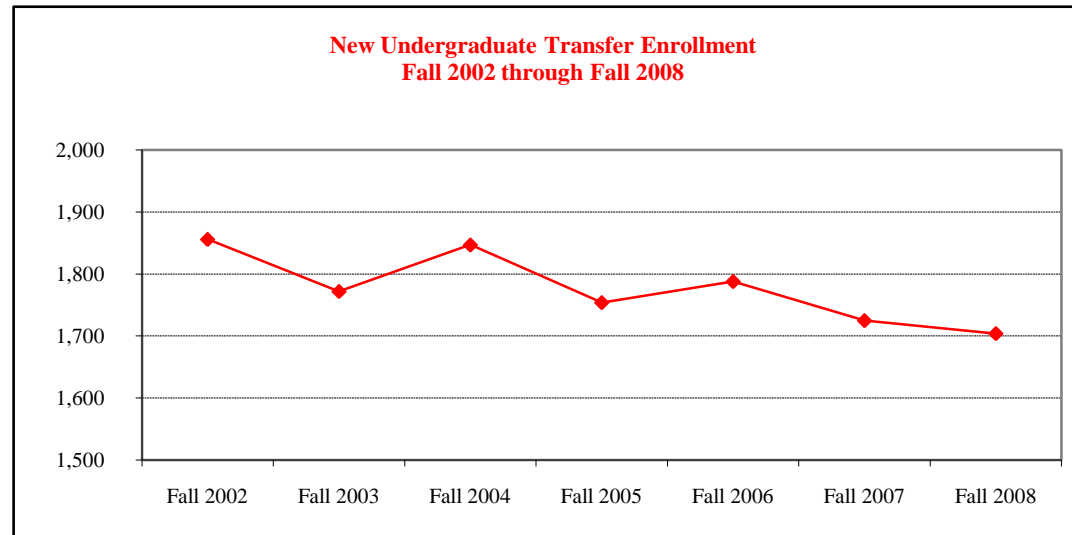


# STUDENTS ~ NEW

## NEW UNDERGRADUATE TRANSFERS ~ FALL 2002 through FALL 2008

<u>Racial/Ethnic Designation</u>	<u>Fall 2002</u>	<u>Fall 2003</u>	<u>Fall 2004</u>	<u>Fall 2005</u>	<u>Fall 2006</u>	<u>Fall 2007</u>	<u>Fall 2008</u>
American Indian/Alaskan Native	2	4	4	3	5	9	7
Black/Non-Hispanic	71	65	99	79	68	47	47
Asian/Pacific Islander	15	18	35	27	26	22	37
Hispanic	46	50	52	45	61	65	48
White/Non-Hispanic	1,699	1,616	1,508	1,467	1,561	1,494	1,472
Not Reported	--	--	131	110	54	80	79
Non-Resident Alien	23	19	18	23	13	8	14
Total	1,856	1,772	1,847	1,754	1,788	1,725	1,704

<u>Transfer Institution Type</u>	<u>Fall 2002</u>	<u>Fall 2003</u>	<u>Fall 2004</u>	<u>Fall 2005</u>	<u>Fall 2006</u>	<u>Fall 2007</u>	<u>Fall 2008</u>
Community Colleges	1,536	1,379	1,414	1,377	1,403	1,337	1,320
4-Year Colleges	314	366	427	366	385	388	384

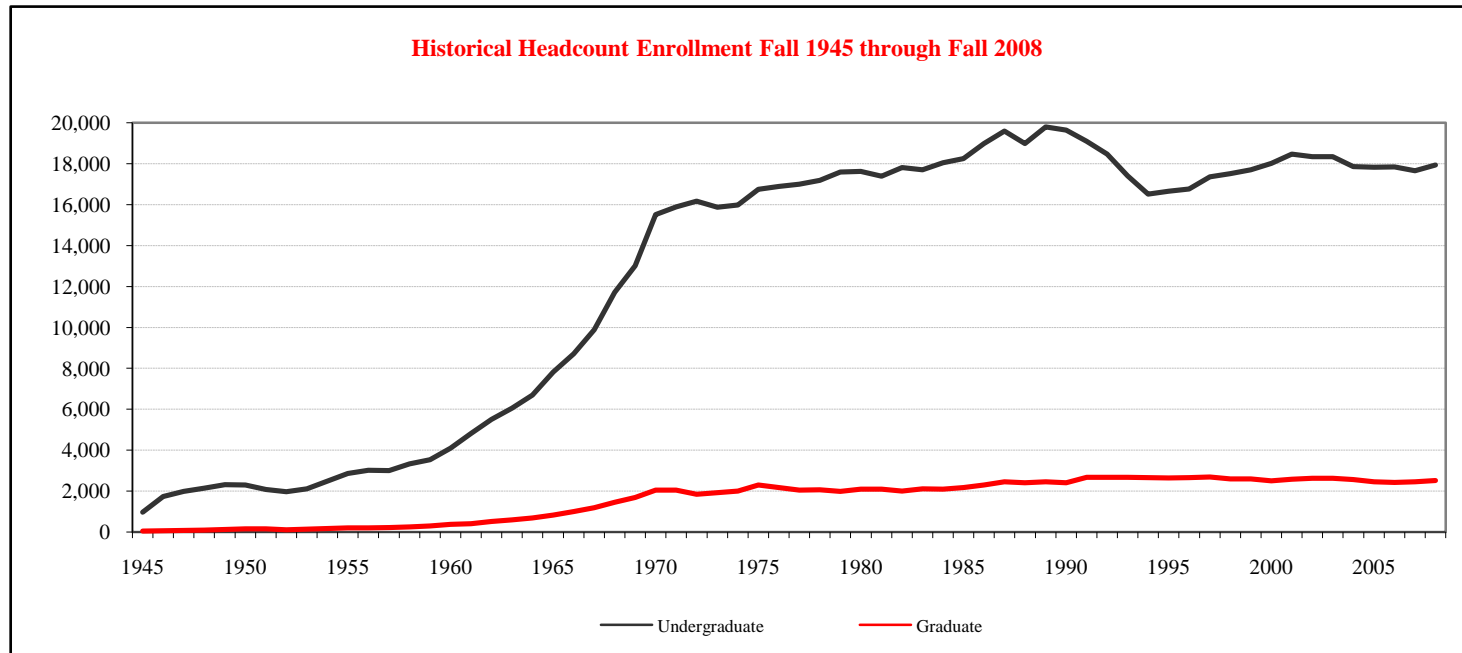




# STUDENT ~ ENROLLMENT

## GENDER, LEVEL, & HOURS ~ FALL 2002 through FALL 2008

	Fall 2002		Fall 2003		Fall 2004		Fall 2005		Fall 2006		Fall 2007		Fall 2008	
	Male	Female	Male	Female	Male	Female	Male	Female	Male	Female	Male	Female	Male	Female
<b>Undergraduate</b>														
12 or more hours	7,060	9,918	7,080	9,731	7,062	9,552	7,021	9,614	7,166	9,528	7,164	9,435	7,312	9,624
Less than 12 hours	655	719	606	680	589	663	560	632	524	624	503	553	494	519
Sub Total	7,715	10,637	7,686	10,411	7,651	10,215	7,581	10,246	7,690	10,152	7,667	9,988	7,806	10,143
<b>Graduate</b>														
9 or more hours	404	690	425	718	454	691	464	672	443	678	450	666	451	661
Less than 9 hours	553	976	497	968	482	926	432	870	418	880	418	915	419	970
Sub Total	957	1,666	922	1,686	936	1,617	896	1,542	861	1,558	868	1,581	870	1,631
<b>Total</b>	8,672	12,303	8,608	12,097	8,587	11,832	8,477	11,788	8,551	11,710	8,535	11,569	8,676	11,774





# STUDENT ~ ENROLLMENT

## COLLEGE, RACIAL/ETHNIC & LEVEL ~ FALL 2008

	<u>American Indian/ Alaskan Native</u>	<u>Black/Non- Hispanic</u>	<u>Asian/Pacific Islander</u>	<u>Hispanic</u>	<u>White/Non- Hispanic</u>	<u>Non-Resident Aliens</u>	<u>Not Reported</u>	<u>Total</u>
<u>Undergraduate</u>								
Applied Science and Technology	12	171	37	109	2,820	17	100	3,266
Arts and Sciences	20	289	106	213	4,366	33	248	5,275
Business	11	159	81	99	2,851	20	108	3,329
Education	7	62	36	85	2,200	3	79	2,472
Fine Arts	3	42	20	36	858	--	69	1,028
Mennonite College of Nursing		6	3	2	257	--	6	274
Other	14	210	55	111	1,794	36	85	2,305
Total	67	939	338	655	15,146	109	695	17,949

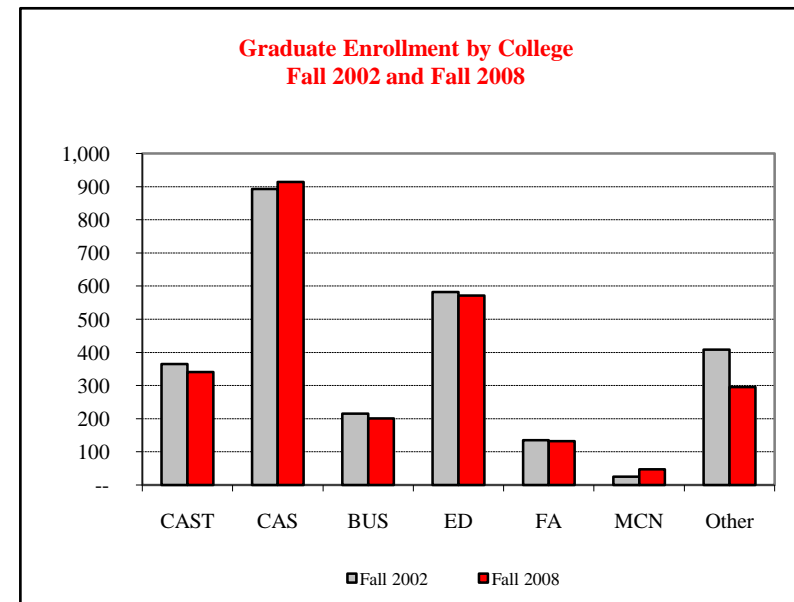
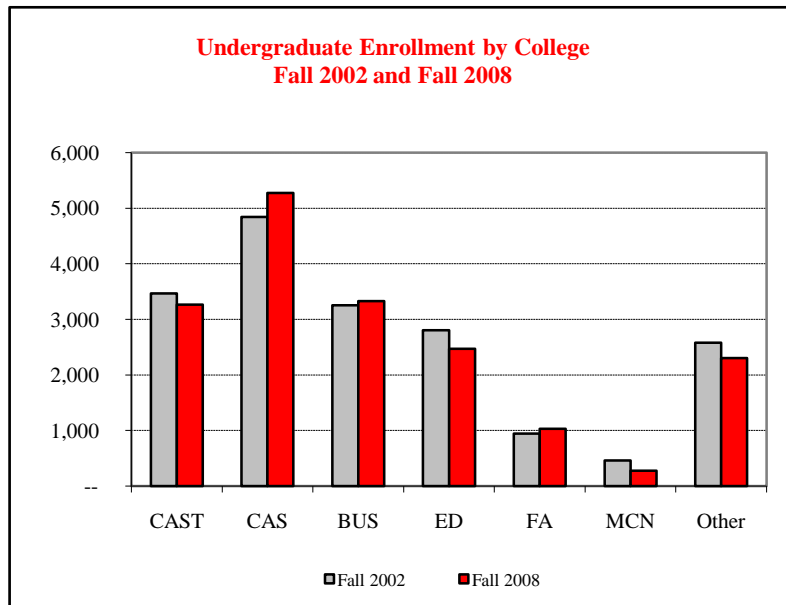
	<u>American Indian/ Alaskan Native</u>	<u>Black/Non- Hispanic</u>	<u>Asian/Pacific Islander</u>	<u>Hispanic</u>	<u>White/Non- Hispanic</u>	<u>Non-Resident Aliens</u>	<u>Not Reported</u>	<u>Total</u>
<u>Graduate</u>								
Applied Science and Technology	2	13	11	5	218	80	12	341
Arts and Sciences	5	36	22	23	676	110	42	914
Business	--	4	10	5	142	32	8	201
Education	--	31	6	13	500	12	9	571
Fine Arts	--	2	4	2	92	22	10	132
Mennonite College of Nursing	--	2	--	--	41	1	3	47
Other	--	16	9	5	244	9	12	295
Total	7	104	62	53	1,913	266	96	2,501



# STUDENT ~ ENROLLMENT

## COLLEGE & LEVEL ~ FALL 2002 and Fall 2008

	Fall 2002			Fall 2008			Percent Change		
	Undergraduate	Graduate	Total	Undergraduate	Graduate	Total	Undergraduate	Graduate	Total
Applied Science and Technology	3,467	365	3,832	3,266	341	3,607	(5.8)	(6.6)	(5.9)
Arts and Sciences	4,841	893	5,734	5,275	914	6,189	9.0	2.4	7.9
Business	3,254	215	3,469	3,329	201	3,530	2.3	(6.5)	1.8
Education	2,805	582	3,387	2,472	571	3,043	(11.9)	(1.9)	(10.2)
Fine Arts	943	135	1,078	1,028	132	1,160	9.0	(2.2)	7.6
Menonite College of Nursing	461	25	486	274	47	321	(40.6)	88.0	(34.0)
Other	2,581	408	2,989	2,305	295	2,600	(10.7)	(27.7)	(13.0)
Total	18,352	2,623	20,975	17,949	2,501	20,450	(2.2)	(4.7)	(2.5)



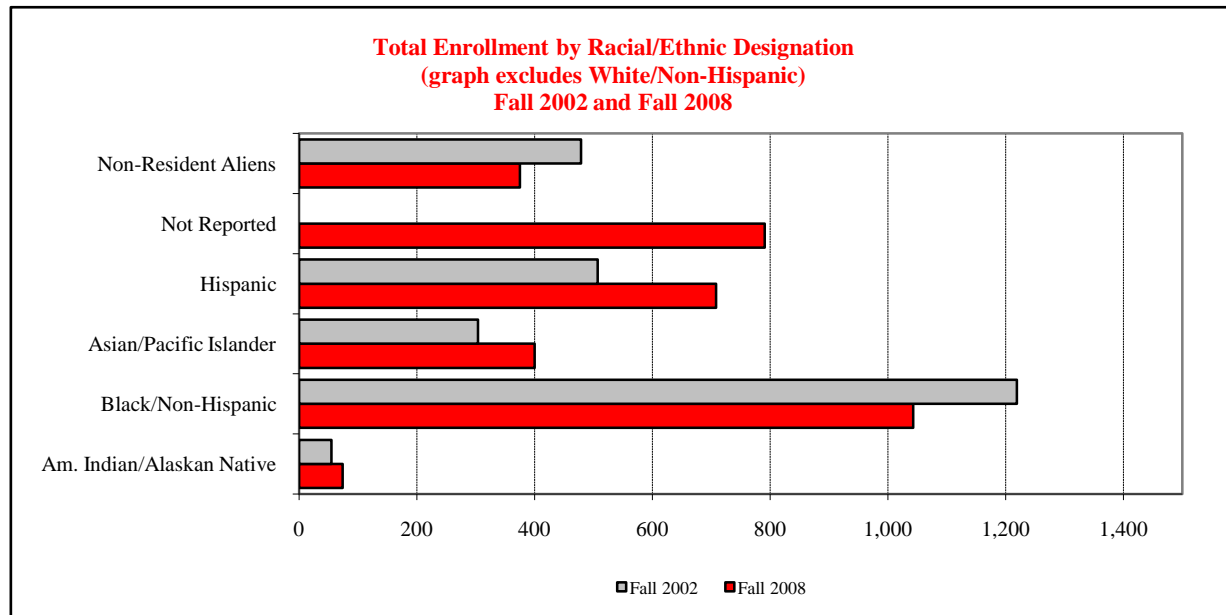




# STUDENT ~ ENROLLMENT

## RACIAL/ETHNIC & LEVEL ~ FALL 2002 and FALL 2008

Racial/Ethnic Designation	Fall 2002			Fall 2008			Percent Change		
	Undergraduate	Graduate	Total	Undergraduate	Graduate	Total	Undergraduate	Graduate	Total
American Indian/Alaskan Native	47	8	55	67	7	74	42.6	(12.5)	34.5
Black/Non-Hispanic	1,083	136	1,219	939	104	1,043	(13.3)	(23.5)	(14.4)
Asian/Pacific Islander	259	45	304	338	62	400	30.5	37.8	31.6
Hispanic	468	39	507	655	53	708	40.0	35.9	39.6
White/Non-Hispanic	16,344	2,067	18,411	15,146	1,913	17,059	(7.3)	(7.5)	(7.3)
Not Reported	--	--	--	695	96	791	--	--	--
Non-Resident Aliens	151	328	479	109	266	375	(27.8)	(18.9)	(21.7)
<b>Total</b>	<b>18,352</b>	<b>2,623</b>	<b>20,975</b>	<b>17,949</b>	<b>2,501</b>	<b>20,450</b>	<b>(2.2)</b>	<b>(4.7)</b>	<b>(2.5)</b>





# STUDENT ~ ENROLLMENT

CLASS AND AGE ~ FALL 2008

<u>Age as of</u> <u>September 1, 2007</u>	<u>Undergraduate</u>						<u>Graduate</u>				<u>Grand</u> <u>Total</u>
	<u>Freshmen</u>	<u>Sophomore</u>	<u>Junior</u>	<u>Senior</u>	<u>Unclassified</u>	<u>Total</u>	<u>Masters</u>	<u>Certificate</u>	<u>Doctoral</u>	<u>Total</u>	
Under 18	51	1	--	--	19	71	--	--	--	--	71
18 - 19	4,453	1,768	86	2	--	6,309	1	--	--	1	6,310
20 - 21	109	1,388	3,630	2,258	19	7,404	14	2	1	17	7,421
22 - 24	19	87	518	2,295	10	2,929	698	15	29	742	3,671
25 - 29	4	44	182	481	10	721	647	21	56	724	1,445
30 - 39	3	19	70	247	4	343	420	31	133	584	927
40 - 49	3	5	30	84	4	126	199	17	58	274	400
50 - 59	2	--	7	30	1	40	91	5	43	139	179
60 or over	--	--	2	3	1	6	16	--	4	20	26
<b>Total</b>	<b>4,644</b>	<b>3,312</b>	<b>4,525</b>	<b>5,400</b>	<b>68</b>	<b>17,949</b>	<b>2,086</b>	<b>91</b>	<b>324</b>	<b>2,501</b>	<b>20,450</b>

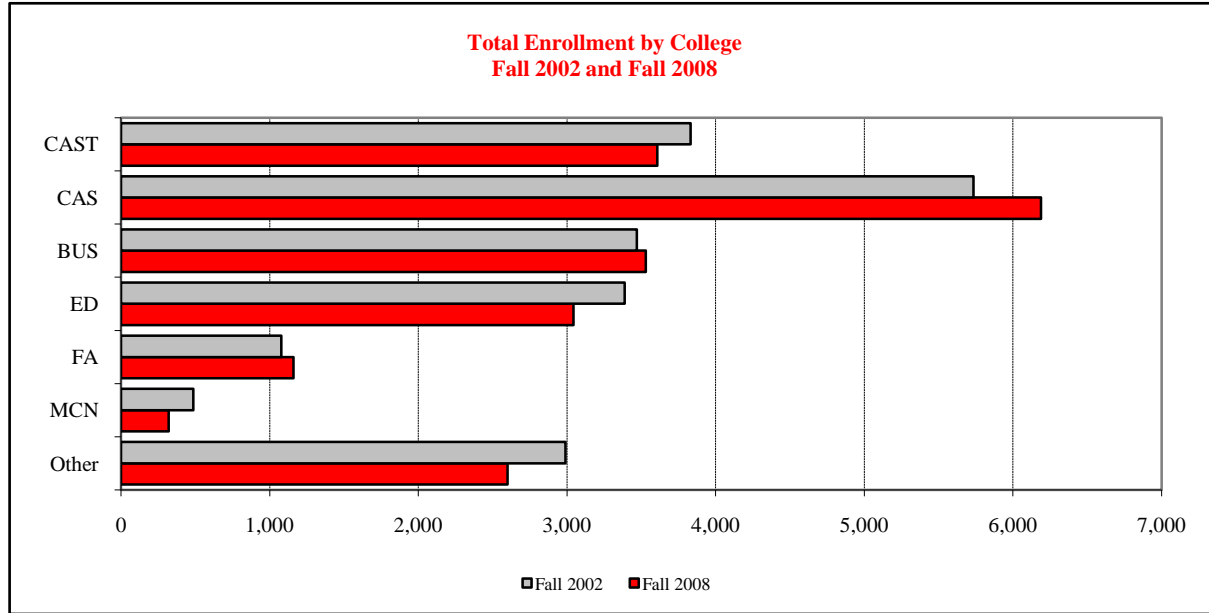




# STUDENT ~ ENROLLMENT

## TOTAL COLLEGE AND GENDER ~ FALL 2002 and FALL 2008

College	Fall 2002			Fall 2008			Percent Change		
	Male	Female	Total	Male	Female	Total	Male	Female	Total
Applied Science and Technology	2,216	1,616	3,832	2,064	1,543	3,607	(6.9)	(4.5)	(5.9)
Arts and Sciences	2,281	3,453	5,734	2,504	3,685	6,189	9.8	6.7	7.9
Business	1,972	1,497	3,469	2,175	1,355	3,530	10.3	(9.5)	1.8
Education	363	3,024	3,387	334	2,709	3,043	(8.0)	(10.4)	(10.2)
Fine Arts	469	609	1,078	482	678	1,160	2.8	11.3	7.6
Mennonite College of Nursing	25	461	486	15	306	321	(40.0)	(33.6)	(34.0)
Other	1,346	1,643	2,989	1,102	1,498	2,600	(18.1)	(8.8)	(13.0)
<b>Total</b>	<b>8,672</b>	<b>12,303</b>	<b>20,975</b>	<b>8,676</b>	<b>11,774</b>	<b>20,450</b>	<b>0.0</b>	<b>(4.3)</b>	<b>(2.5)</b>

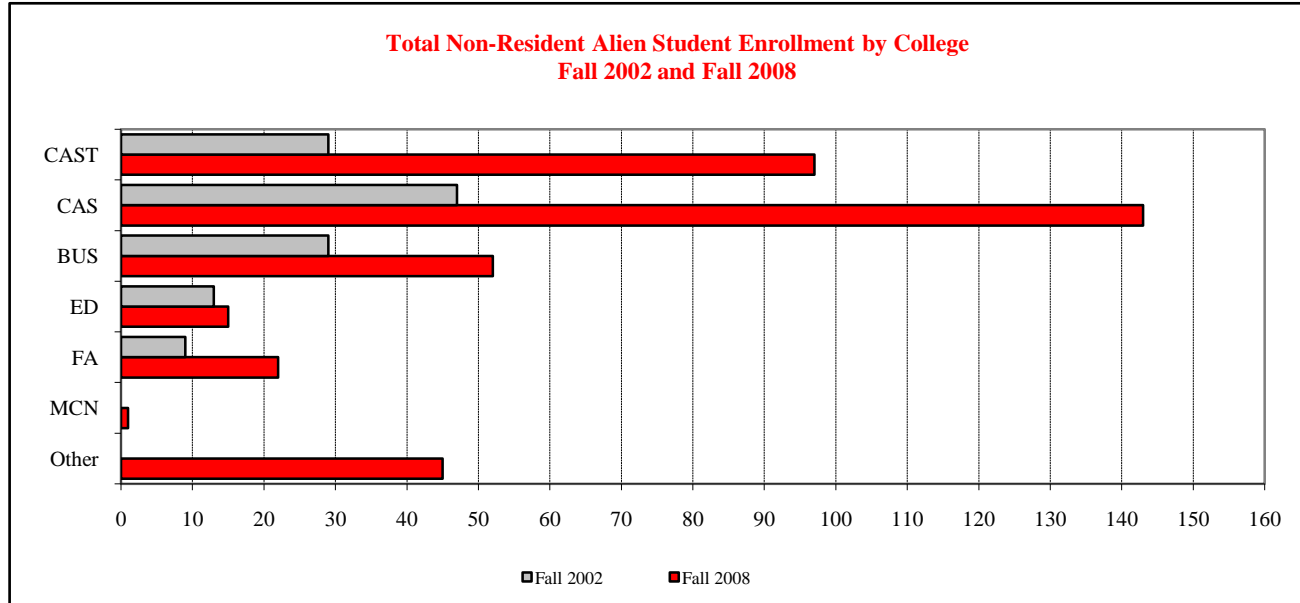




# STUDENT ~ ENROLLMENT

## NON-RESIDENT ALIEN STUDENTS ~ FALL 2002 & FALL 2008

	Fall 2002			Fall 2008			Percent Change		
	Undergraduate	Graduate	Total	Undergraduate	Graduate	Total	Undergraduate	Graduate	Total
Applied Science and Technology	6	23	29	17	80	97	183.3	247.8	234.5
Arts and Sciences	17	30	47	33	110	143	94.1	266.7	204.3
Business	14	15	29	20	32	52	42.9	113.3	79.3
Education	--	13	13	3	12	15	--	(7.7)	15.4
Fine Arts	--	9	9	--	22	22	--	144.4	144.4
Mennonite College of Nursing	--	--	--	--	1	1	--	--	--
Other	--	--	--	36	9	45	--	--	--
<b>Total</b>	<b>37</b>	<b>90</b>	<b>127</b>	<b>109</b>	<b>266</b>	<b>375</b>	<b>194.6</b>	<b>195.6</b>	<b>195.3</b>



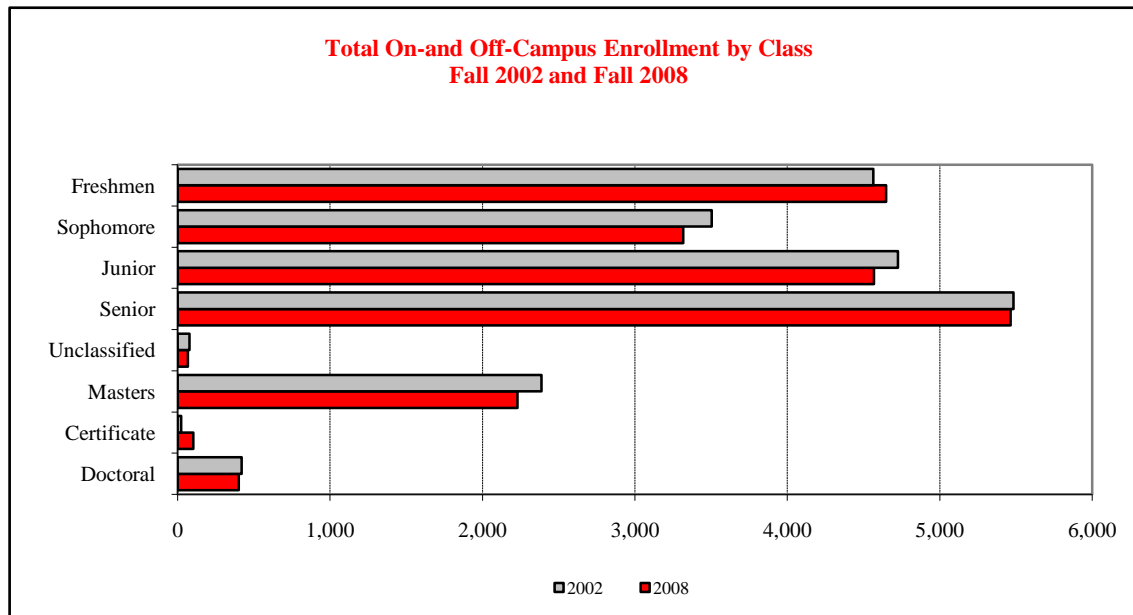


# STUDENT ~ ENROLLMENT

## ON/OFF-CAMPUS & CLASS ~ FALL 2002 and FALL 2008

	Fall 2002				Fall 2008				Percent Change			
	On-Campus	Off-Campus	Total	FTE <sup>1</sup>	On-Campus	Off-Campus	Total	FTE <sup>1</sup>	On-Campus	Off-Campus	Total	FTE <sup>1</sup>
Freshmen	4,563	--	4,563	4,320	4,644	3	4,647	4,499	1.8	--	1.8	4.1
Sophomore	3,504	--	3,504	3,328	3,312	5	3,317	3,191	(5.5)	--	(5.3)	(4.1)
Junior	4,726	--	4,726	4,324	4,525	44	4,569	4,229	(4.3)	--	(3.3)	(2.2)
Senior	5,482	1	5,483	4,757	5,400	64	5,464	4,726	(1.5)	--	(.3)	(.7)
Unclassified	77	--	77	37	68	--	68	39	(11.7)	--	(11.7)	5.4
Masters	2,256	132	2,388	1,656	2,086	144	2,230	1,624	(7.5)	9.1	(6.6)	(1.9)
Certificate	23	--	23	23	91	11	102	58	295.7	--	343.5	152.2
Doctoral	344	75	419	262	324	78	402	249	(5.8)	4.0	(4.1)	(5.0)
<b>Total</b>	<b>20,975</b>	<b>208</b>	<b>21,183</b>	<b>18,707</b>	<b>20,450</b>	<b>349</b>	<b>20,799</b>	<b>18,614</b>	<b>(2.5)</b>	<b>67.8</b>	<b>(1.8)</b>	<b>(.5)</b>

<sup>1</sup> Full-Time Equivalency (FTE) Undergraduate - credit hours/12; Graduate = credit hours/9.

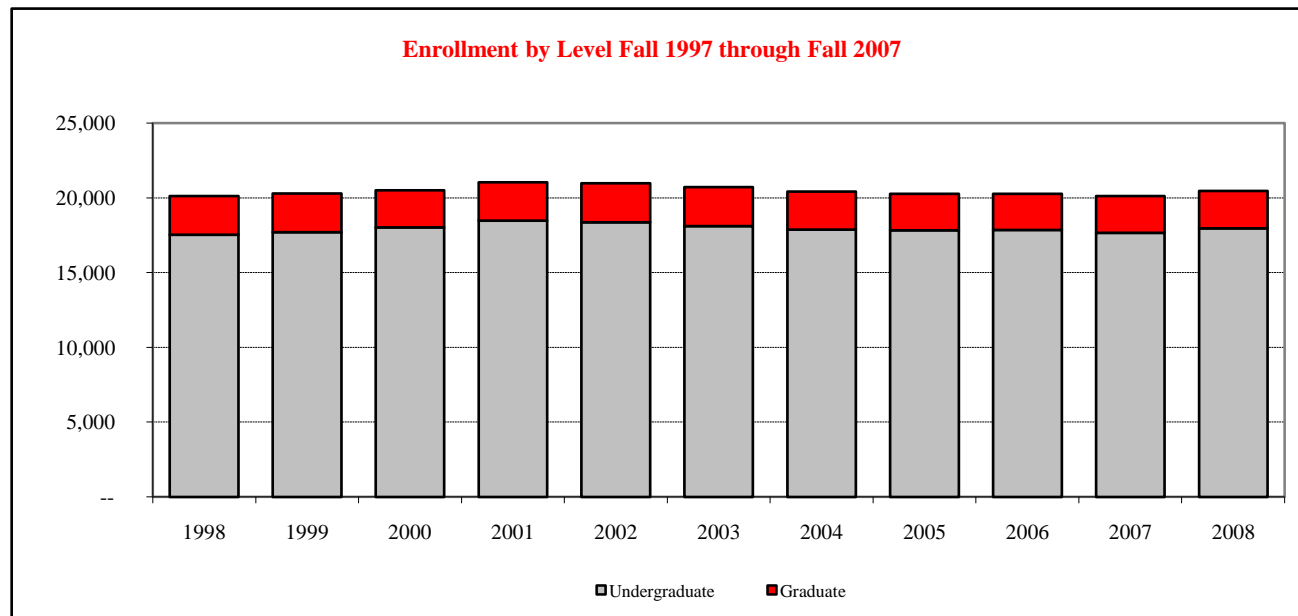
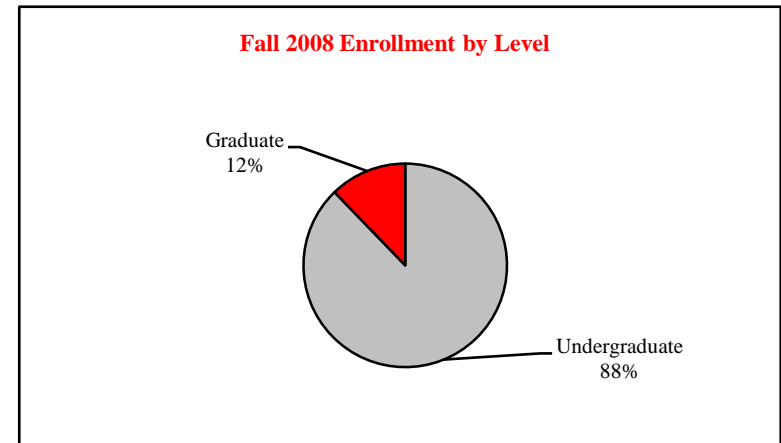




# STUDENT ~ ENROLLMENT

LEVEL ~ FALL 1998 through FALL 2008

<u>Fall</u>	<u>Undergraduate</u>	<u>Graduate</u>	<u>Total</u>
1998	17,518	2,587	20,105
1999	17,703	2,578	20,281
2000	18,018	2,486	20,504
2001	18,472	2,563	21,035
2002	18,352	2,623	20,975
2003	18,097	2,608	20,705
2004	17,866	2,553	20,419
2005	17,827	2,438	20,265
2006	17,842	2,419	20,261
2007	17,655	2,449	20,104
2008	17,949	2,501	20,450





# STUDENT ~ ENROLLMENT

## CLASS, GENDER & RACIAL/ETHNIC ~ FALL 2008

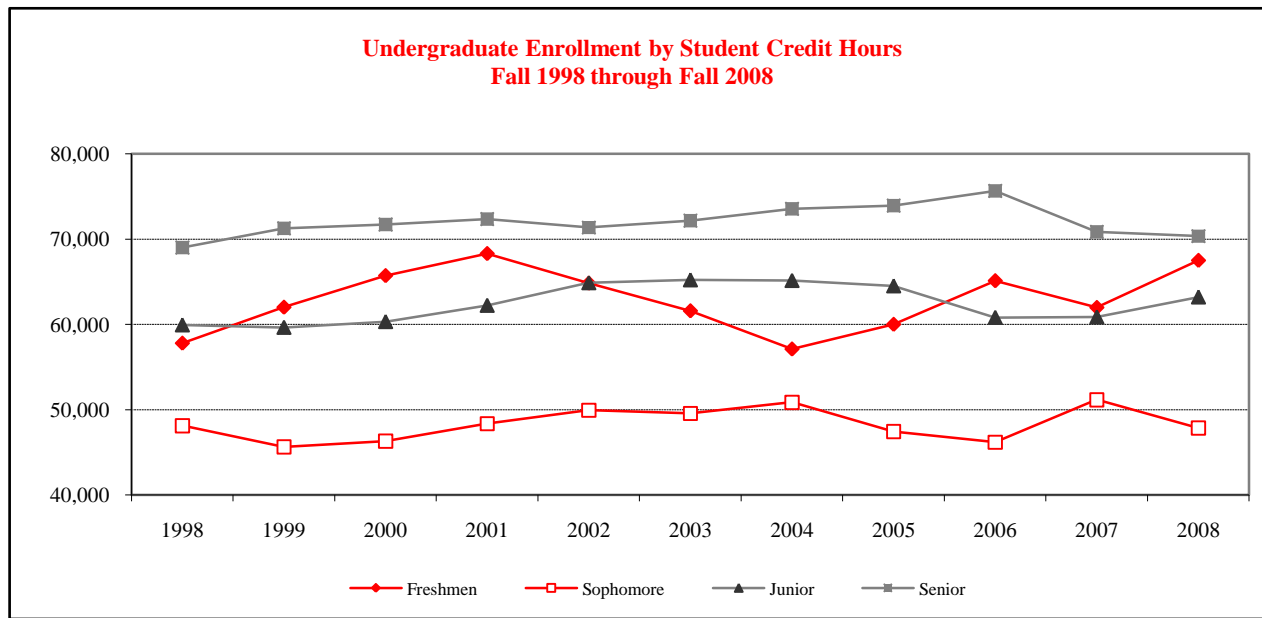
	<u>American Indian/ Alaskan Native</u>	<u>Black/Non- Hispanic</u>	<u>Asian/Pacific Islander</u>	<u>Hispanic</u>	<u>White/Non- Hispanic</u>	<u>Non-Resident Aliens</u>	<u>Not Reported</u>	<u>Total</u>
<u>Freshmen</u>								
Male	11	102	45	89	1,582	5	78	1,912
Female	14	199	61	126	2,242	9	81	2,732
<u>Sophomore</u>								
Male	7	66	37	61	1,203	3	60	1,437
Female	10	98	25	59	1,633	7	43	1,875
<u>Junior</u>								
Male	3	88	29	64	1,778	12	91	2,065
Female	8	108	48	73	2,127	11	85	2,460
<u>Senior</u>								
Male	6	112	40	77	1,998	15	111	2,359
Female	8	165	52	105	2,548	21	142	3,041
<u>Unclassified</u>								
Male	--	1	1	--	19	9	3	33
Female	--	--	--	1	16	17	1	35
<u>Undergraduate Total</u>								
Male	27	369	152	291	6,580	44	343	7,806
Female	40	570	186	364	8,566	65	352	10,143
<hr/>								
<u>Masters</u>								
Male	3	19	24	13	519	116	43	737
Female	3	61	31	30	1,074	104	46	1,349
<u>Certificate</u>								
Male	--	1	--	1	12	3	--	17
Female	--	3	3	--	68	--	--	74
<u>Doctoral</u>								
Male	1	9	1	3	89	11	2	116
Female	--	11	3	6	151	32	5	208
<u>Graduate Total</u>								
Male	4	29	25	17	620	130	45	870
Female	3	75	37	36	1,293	136	51	1,631



# STUDENT ~ ENROLLMENT

# CLASS LEVEL & CREDIT HOURS ~ FALL 1998 - FALL 2008

	<u>1998</u>	<u>1999</u>	<u>2000</u>	<u>2001</u>	<u>2002</u>	<u>2003</u>	<u>2004</u>	<u>2005</u>	<u>2006</u>	<u>2007</u>	<u>2008</u>
Freshmen	57,785	61,993	65,692	68,273	64,805	61,570	57,099	59,989	65,095	61,962	67,475
Sophomore	48,114	45,620	46,299	48,350	49,924	49,558	50,848	47,433	46,166	51,161	47,840
Junior	59,913	59,629	60,300	62,208	64,854	65,193	65,120	64,488	60,795	60,848	63,186
Senior	69,000	71,253	71,699	72,344	71,345	72,157	73,533	73,902	75,641	70,851	70,339
Unclassified	852	664	444	515	553	426	458	391	381	526	589
Masters	14,588	14,410	14,211	13,979	14,450	14,760	14,500	14,119	13,933	13,915	14,080
Certificate	179	202	208	208	204	208	289	248	393	507	476
Doctoral	1,658	1,552	1,594	1,942	2,068	2,073	2,122	2,091	2,053	1,969	1,937
Total Credit Hours	252,088	255,321	260,447	267,819	268,202	265,945	263,968	262,660	264,456	261,738	265,921







# STUDENT ~ ENROLLMENT

Illinois Residents by County ~ Fall 2008

County	Undergrads	Graduates	County	Undergrads	Graduates	County	Undergrads	Graduates	
Adams	68	4	Hardin	--	--	Morgan	53	8	
Alexander	--	--	Henderson	3	--	Moultrie	10	3	
Bond	7	--	Henry	107	11	Ogle	64	10	
Boone	42	8	Iroquois	87	13	<b>Peoria</b>	<b>379</b>	<b>103</b>	
Brown	4	2	Jackson	14	1	Perry	2	1	
Bureau	96	14	Jasper	2	--	<b>Piatt</b>	<b>64</b>	<b>8</b>	
Calhoun	--	--	Jefferson	3	--	Pike	8	1	
Carroll	22	--	Jersey	12	2	Pope	--	--	
Cass	4	3	Jo Davies	16	2	Pulaski	--	--	
<b>Champaign</b>	<b>420</b>	<b>56</b>	Johnson	1	--	Putnam	17	4	
Christian	47	4	<b>Kane</b>	<b>848</b>	<b>22</b>	Randolph	5	--	
Clark	2	1	Kankakee	200	13	Richland	3	--	
Clay	2	1	Kendall	140	5	Rock Island	170	23	
Clinton	15	2	Knox	45	12	Saline	5	1	
Coles	34	3	<b>Lake</b>	<b>1,155</b>	<b>25</b>	<b>Sangamon</b>	<b>342</b>	<b>68</b>	
<b>Cook</b>	<b>4,699</b>	<b>160</b>	LaSalle	327	54	Schuyler	--	1	
Crawford	7	--	Lawrence	2	--	Scott	--	--	
Cumberland	4	2	Lee	28	6	Shelby	12	6	
DeKalb	88	2	<b>Livingston</b>	<b>203</b>	<b>27</b>	St. Clair	89	6	
<b>DeWitt</b>	<b>67</b>	<b>18</b>	<b>Logan</b>	<b>71</b>	<b>21</b>	Stark	6	1	
Douglas	21	5	<b>Macon</b>	<b>155</b>	<b>41</b>	Stephenson	61	8	
<b>DuPage</b>	<b>1,826</b>	<b>59</b>	Macoupin	40	2	<b>Tazewell</b>	<b>409</b>	<b>81</b>	
Edgar	8	--	Madison	127	14	Union	3	1	
Edwards	1	--	Marion	8	2	Vermilion	137	19	
Effingham	24	7	Marshall	20	7	Wabash	1	--	
Fayette	5	--	<b>Mason</b>	<b>37</b>	<b>7</b>	Warren	17	4	
<b>Ford</b>	<b>56</b>	<b>11</b>	Massac	--	--	Washington	5	1	
Franklin	7	--	McDonough	35	6	Wayne	1	--	
Fulton	44	18	<b>McHenry</b>	<b>636</b>	<b>21</b>	White	2	--	
Gallatin	1	--	<b>McLean</b>	<b>1,251</b>	<b>723</b>	Whiteside	70	10	
Greene	5	1	<b>Menard</b>	<b>23</b>	<b>3</b>	<b>Will</b>	<b>1,327</b>	<b>51</b>	
Grundy	194	9	Mercer	23	3	Williamson	7	--	
Hamilton	--	--	Monroe	32	2	Winnebago	346	19	
Hancock	16	3	Montgomery	42	3	<b>Woodford</b>	<b>238</b>	<b>49</b>	
							Illinois Total	17,382	1,928



**Bold - McLean and Surrounding Counties**  
**Red - Cook and Collar Counties**



# STUDENT ~ ENROLLMENT

STATE RESIDENCE ~ FALL 2008

State	Undergraduates	Graduates	State	Undergraduates	Graduates	State	Undergraduates	Graduates
Alabama	3	1	Maine	--	3	Pennsylvania	9	6
Alaska	2	--	Maryland	5	2	Rhode Island	1	1
Arizona	6	3	Massachusetts	2	2	South Carolina	3	1
Arkansas	3	2	<b>Michigan</b>	<b>26</b>	<b>21</b>	South Dakota	1	1
<b>California</b>	<b>18</b>	<b>19</b>	<b>Minnesota</b>	<b>12</b>	<b>13</b>	Tennessee	6	7
Colorado	11	9	Mississippi	2	1	<b>Texas</b>	<b>26</b>	<b>5</b>
Connecticut	3	1	<b>Missouri</b>	<b>35</b>	<b>10</b>	Utah	2	3
Delaware	--	1	Montana	--	1	Vermont	10	7
Dist. of Columbia	--	--	Nebraska	4	6	Virginia	--	1
Florida	16	8	Nevada	1	1	Washington	5	3
Georgia	11	10	New Hampshire	1	2	West Virginia	--	1
Hawaii	4	--	New Jersey	5	1	<b>Wisconsin</b>	<b>44</b>	<b>21</b>
Idaho	1	3	New Mexico	2	--	Wyoming	--	2
<b>Illinois</b>	<b>17,382</b>	<b>1,928</b>	New York	8	11	Territories	3	1
<b>Indiana</b>	<b>48</b>	<b>21</b>	North Carolina	4	2	<b>U.S. Foreign</b>	<b>35</b>	<b>23</b>
<b>Iowa</b>	<b>29</b>	<b>26</b>	North Dakota	--	--			
Kansas	13	7	<b>Ohio</b>	<b>18</b>	<b>16</b>			
Kentucky	4	7	Oklahoma	10	1			
Louisiana	4	4	Oregon	2	9	U.S. Total	17,840	2,235

Bold - Illinois and Top Ten Feeder States

- 94.4% of All Students are Residents of Illinois (Undergraduate 96.8%; Graduate 77.1%)
- 23.4% of All Students are Residents of Cook County (Undergraduate 26.2%; Graduate 6.4%)
- 53.0% of All Students are from Cook County and Collar counties (Undergraduate 58.5%; Graduate 13.5%)
- 8.9% of All Students are from McLean County (Undergraduate 7.0%; Graduate 28.9%)
- 24.1% of All Students are from McLean County and Surrounding Counties (Undergraduate 20.7%; Graduate 48.6%)
- Students come from 94 of the 102 Illinois Counties; 49 of the 50 United States; and 56 Countries outside the US.



# STUDENT ~ ENROLLMENT

## NON-RESIDENT ALIEN STUDENTS ~ FALL 2008

	<u>Undergraduates</u>	<u>Graduates</u>		<u>Undergraduates</u>	<u>Graduates</u>		<u>Undergraduates</u>	<u>Graduates</u>
<b>AFRICA</b>			<b>EUROPE</b>			<b>MIDDLE EAST</b>		
Algeria	1	--	Bulgaria	1	--	Iran	--	1
Cameroon	--	2	Denmark	--	1	Saudi Arabia	1	--
Ghana	--	10	Estonia	1	--	Turkey	--	2
Kenya	1	4	France	2	3	<b>NORTH AMERICA</b>		
Mozambique	--	1	Germany Fed Rep	6	6	Bermuda	2	--
Nigeria	4	1	Montenegro	1	--	Canada	10	1
South Africa	1	--	Netherlands	2	--	United States	17,840	2,235
Tanzania	--	1	Portugal	1	--	<b>OCEANIA</b>		
Uganda	--	1	Serbia	4	--	Australia	3	--
Zimbabwe	--	2	Slovenia	1	--			
<b>ASIA</b>			Spain	1	1			
Armenia	--	2	Sweden	2	--			
Bangladesh	--	1	United Kingdom	1	--			
China	1	32	<b>LATIN AMERICA</b>					
Hong Kong	2	1	<b>Caribbean</b>					
India	4	114	Barbados	3	2			
Japan	9	6	Jamaica	--	1			
Kazakhstan	1	--	<b>Central America</b>					
Korea, South	27	16	El Salvador	1	--			
Malaysia	3	2	Mexico	1	1			
Nepal	--	13	<b>South America</b>					
Pakistan	1	1	Argentina	1	1			
Philippines	--	3	Brazil	--	1			
Russia	--	5	Chile	1	--	Non-Resident Alien	109	266
Sri Lanka	1	1	Colombia	1	2			
Taiwan	2	9	Ecuador	1	--			
Thailand	2	12	Uruguay	1	--	Total Enrollment	17,949	2,501
Uzbekistan	--	3						



# DEGREES CONFERRED

COLLEGE ~ FISCAL YEAR 2002 through FISCAL YEAR 2008

<u>College</u>	<u>Undergraduate</u>						
	<u>FY 2002</u>	<u>FY 2003</u>	<u>FY 2004</u>	<u>FY 2005</u>	<u>FY 2006</u>	<u>FY 2007</u>	<u>FY 2008</u>
Applied Science and Technology	960	1,001	947	974	993	1,005	981
Arts and Sciences	1,309	1,280	1,359	1,437	1,378	1,522	1,430
Business	756	782	832	878	748	752	731
Education	788	812	680	625	692	630	598
Fine Arts	234	207	186	204	203	214	228
Mennonite College of Nursing	96	84	86	116	104	124	114
Other <sup>1</sup>	36	36	58	40	40	59	104
Total	4,179	4,202	4,148	4,274	4,158	4,306	4,186

<u>College</u>	<u>Graduate</u>						
	<u>FY 2002</u>	<u>FY 2003</u>	<u>FY 2004</u>	<u>FY 2005</u>	<u>FY 2006</u>	<u>FY 2007</u>	<u>FY 2008</u>
Applied Science and Technology	116	117	130	142	136	108	136
Arts and Sciences	276	262	269	297	288	282	243
Business	69	93	98	102	103	98	95
Education	180	225	173	183	225	171	221
Fine Arts	48	64	52	47	51	64	51
Mennonite College of Nursing	14	12	6	9	14	18	7
Total	703	773	728	780	817	741	753

<u>College</u>	<u>Total</u>						
	<u>FY 2002</u>	<u>FY 2003</u>	<u>FY 2004</u>	<u>FY 2005</u>	<u>FY 2006</u>	<u>FY 2007</u>	<u>FY 2008</u>
Applied Science and Technology	1,076	1,118	1,077	1,116	1,129	1,113	1,117
Arts and Sciences	1,585	1,542	1,628	1,734	1,666	1,804	1,673
Business	825	875	930	980	851	850	826
Education	968	1,037	853	808	917	801	819
Fine Arts	282	271	238	251	254	278	279
Mennonite College of Nursing	110	96	92	125	118	142	121
Other <sup>1</sup>	48	36	36	58	40	40	104
Total	4,882	4,975	4,876	5,054	4,975	5,047	4,939

<sup>1</sup> Other includes: Interdisciplinary Studies, and University Studies.



# DEGREES

## UNDERGRADUATE, GENDER & RACIAL/ETHNIC DESIGNATION

<u>Racial/Ethnic Designation</u>	<u>Male</u>						
	<u>FY 2002</u>	<u>FY 2003</u>	<u>FY 2004</u>	<u>FY 2005</u>	<u>FY 2006</u>	<u>FY 2007</u>	<u>FY 2008</u>
American Indian/Alaskan Native	2	4	6	2	2	8	1
Black/Non-Hispanic	76	84	77	76	63	59	68
Asian/Pacific Islander	25	20	30	31	29	22	29
Hispanic	34	43	39	37	50	60	62
White/Non-Hispanic	1,537	1,545	1,519	1,618	1,520	1,632	1,515
Not Reported	1	1	2	4	23	49	71
Non-Resident Alien	19	13	14	19	21	20	14
Total	1,694	1,710	1,687	1,787	1,708	1,850	1,760

<u>Racial/Ethnic Designation</u>	<u>Female</u>						
	<u>FY 2002</u>	<u>FY 2003</u>	<u>FY 2004</u>	<u>FY 2005</u>	<u>FY 2006</u>	<u>FY 2007</u>	<u>FY 2008</u>
American Indian/Alaskan Native	5	5	9	8	5	6	5
Black/Non-Hispanic	167	166	127	122	135	129	139
Asian/Pacific Islander	30	35	33	29	33	45	41
Hispanic	46	60	52	61	72	73	92
White/Non-Hispanic	2,219	2,212	2,220	2,246	2,160	2,151	2,043
Not Reported	--	1	1	2	25	35	78
Non-Resident Alien	18	13	19	19	20	17	28
Total	2,485	2,492	2,461	2,487	2,450	2,456	2,426

<u>Racial/Ethnic Designation</u>	<u>Total</u>						
	<u>FY 2002</u>	<u>FY 2003</u>	<u>FY 2004</u>	<u>FY 2005</u>	<u>FY 2006</u>	<u>FY 2007</u>	<u>FY 2008</u>
American Indian/Alaskan Native	7	9	15	10	7	14	6
Black/Non-Hispanic	243	250	204	198	198	188	207
Asian/Pacific Islander	55	55	63	60	62	67	70
Hispanic	80	103	91	98	122	133	154
White/Non-Hispanic	3,756	3,757	3,739	3,864	3,680	3,783	3,558
Not Reported	1	2	3	6	48	84	149
Non-Resident Alien	37	26	33	38	41	37	42
Total	4,179	4,202	4,148	4,274	4,158	4,306	4,186



# DEGREES CONFERRED

## GRADUATE, LEVEL & RACIAL/ETHNIC DESIGNATION

<u>Racial/Ethnic Designation</u>	<u>Masters</u>						
	<u>FY 2002</u>	<u>FY 2003</u>	<u>FY 2004</u>	<u>FY 2005</u>	<u>FY 2006</u>	<u>FY 2007</u>	<u>FY 2008</u>
American Indian/Alaskan Native	2	--	1	1	--	2	2
Black/Non-Hispanic	29	31	21	29	36	20	30
Asian/Pacific Islander	12	9	9	14	12	6	17
Hispanic	17	6	5	7	12	17	10
White/Non-Hispanic	506	585	536	568	588	529	492
Not Reported	--	--	--	--	9	27	12
Non-Resident Alien	78	79	106	96	98	70	95
Total	644	710	678	715	755	671	658

<u>Racial/Ethnic Designation</u>	<u>IBHE Approved Certificate</u>						
	<u>FY 2002</u>	<u>FY 2003</u>	<u>FY 2004</u>	<u>FY 2005</u>	<u>FY 2006</u>	<u>FY 2007</u>	<u>FY 2008</u>
American Indian/Alaskan Native	--	--	--	--	--	--	--
Black/Non-Hispanic	--	1	1	--	--	2	--
Asian/Pacific Islander	--	2	--	1	1	2	--
Hispanic	--	--	--	2	1	--	--
White/Non-Hispanic	7	16	6	13	8	17	33
Not Reported	--	--	--	--	--	--	1
Non-Resident Alien	--	1	--	--	--	--	--
Total	7	20	7	16	10	21	34

<u>Racial/Ethnic Designation</u>	<u>Doctoral</u>						
	<u>FY 2002</u>	<u>FY 2003</u>	<u>FY 2004</u>	<u>FY 2005</u>	<u>FY 2006</u>	<u>FY 2007</u>	<u>FY 2008</u>
American Indian/Alaskan Native	--	--	--	--	--	--	1
Black/Non-Hispanic	--	4	6	7	4	5	5
Asian/Pacific Islander	--	--	--	1	--	1	--
Hispanic	2	1	1	1	1	1	2
White/Non-Hispanic	38	29	29	33	39	31	34
Not Reported	--	--	--	--	--	--	--
Non-Resident Alien	12	21	7	7	8	11	14
Total	52	55	43	49	52	49	56

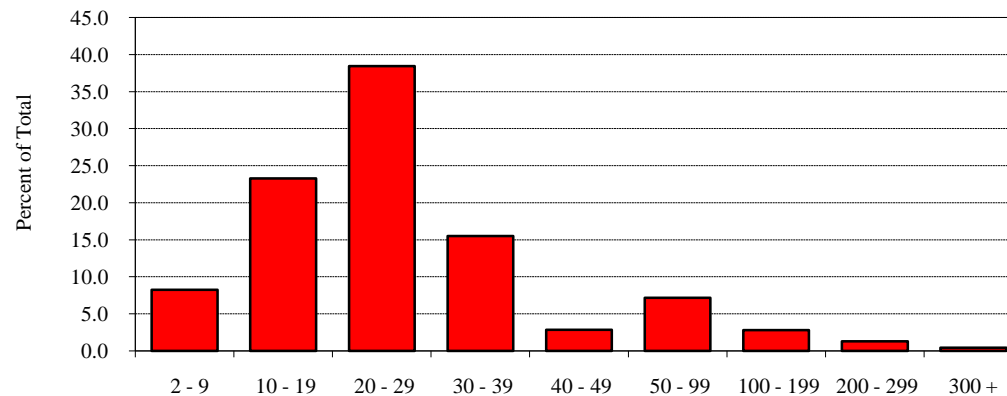


# STUDENT ~ OTHER

## CLASS SIZE ~ FALL 2005 through FALL 2008

Class Size <sup>1</sup>	Fall 2005			Fall 2006			Fall 2007			Fall 2008		
	Number	Percent	Cumulative Percent	Number	Percent	Cumulative Percent	Number	Percent	Cumulative Percent	Number	Percent	Cumulative Percent
2 - 9	204	8.6	8.6	193	8.1	8.1	209	8.8	8.8	201	8.3	8.3
10 - 19	553	23.3	31.9	551	23.0	31.0	540	22.7	31.5	567	23.3	31.6
20 - 29	853	35.9	67.8	909	37.9	69.0	926	38.9	70.4	935	38.4	70.0
30 - 39	401	16.9	84.7	375	15.6	84.6	354	14.9	85.3	377	15.5	85.5
40 - 49	85	3.6	88.3	91	3.8	88.4	82	3.4	88.7	69	2.8	88.3
50 - 99	161	6.8	95.0	172	7.2	95.6	163	6.8	95.5	174	7.1	95.4
100 - 199	73	3.1	98.1	64	2.7	98.2	65	2.7	98.3	68	2.8	98.2
200 - 299	34	1.4	99.5	33	1.4	99.6	29	1.2	99.5	32	1.3	99.5
300 +	11	0.5	100.0	9	0.4	100.0	12	0.5	100.0	11	0.5	100.0
Total	2,375	100.0	100.0	2,397	100.0	100.0	2,380	100.0	100.0	2,434	100.0	100.0

Class Size Distribution  
Fall 2008



<sup>1</sup> Breakdowns are based on *U.S. News and World Report* definition.



# STUDENT ~ OTHER

# TIME-TO-DEGREE ~ FALL 1997 through FALL 2004

	Fall Cohort							
	<u>1997</u>	<u>1998</u>	<u>1999</u>	<u>2000</u>	<u>2001</u>	<u>2002</u>	<u>2003</u>	<u>2004</u>
New Beginning Freshmen	3,272	2,749	3,080	3,265	3,340	3,108	3,097	2,834

	Number of Degree Recipients as of August 2008							
	<u>1997</u>	<u>1998</u>	<u>1999</u>	<u>2000</u>	<u>2001</u>	<u>2002</u>	<u>2003</u>	<u>2004</u>
Graduated from Fall Cohort	1,980	1,754	1,987	2,137	2,207	2,172	2,016	1,282

	Time-to-Degree for those who Graduated from Fall Cohort							
<u>Years</u>	<u>1997</u>	<u>1998</u>	<u>1999</u>	<u>2000</u>	<u>2001</u>	<u>2002</u>	<u>2003</u>	<u>2004</u>
Three or Fewer	0.3%	0.5%	0.4%	0.2%	0.5%	0.4%	0.5%	1.2%
Four	50.9%	53.6%	55.6%	56.2%	59.1%	58.6%	63.7%	98.8%
Five	39.9%	37.2%	35.8%	35.8%	32.7%	35.2%	35.8%	--
Six	6.3%	5.8%	5.9%	5.7%	6.2%	5.8%	--	--
Seven	1.6%	1.7%	1.5%	1.6%	1.4%	--	--	--
Eight	0.8%	0.4%	0.6%	0.5%	--	--	--	--
Nine	0.1%	0.5%	0.2%	--	--	--	--	--
Ten	0.2%	0.3%	--	--	--	--	--	--
	100.0%	100.0%	100.0%	100.0%	100.0%	100.0%	100.0%	100.0%

For native undergraduate students (Fall cohort 2002) who graduated from Illinois State University, 59.0 percent finished their degree in four years or less. An additional 35.2 percent graduated in the fifth year, and 5.8 percent graduated in the sixth year (boxes).





# STUDENT ~ OTHER

## RETENTION AND GRADUATION RATES

Fall to Fall Retention Rates	Percent of New Beginning Freshmen that Return for Second Fall Term					
	2002	2003	2004	2005	2006	2007
All Students	82.6%	83.6%	85.0%	84.0%	83.3%	83.4%
Male Students	82.7	83.2	84.4	82.9	81.6	81.4
Female Students	82.5	83.9	85.3	84.7	84.5	84.8
Black/Non-Hispanic Students	71.4	71.8	73.5	65.9	63.2	73.3
Hispanic Students	75.3	68.3	80.4	79.4	75.4	73.2

Six Year Graduation Rates	New Beginning Freshmen Cohort Year					
	1997	1998	1999	2000	2001	2002
All Students	59.1%	62.2%	63.2%	64.0%	65.1%	69.9%
Male Students	53.2	57.5	57.6	59.6	59.1	66.7
Female Students	62.8	64.5	66.4	66.8	68.7	71.8
Black/Non-Hispanic Students	45.4	38.9	42.5	52.9	50.7	52.0
Hispanic Students	40.4	40.0	38.5	50.0	56.3	53.6





ILLINOIS STATE UNIVERSITY

# FACULTY/STAFF

## DID YOU KNOW?

The University has had 17 presidents in its 150 years of existence.

Many have University buildings named after them including Cook and Felmley.

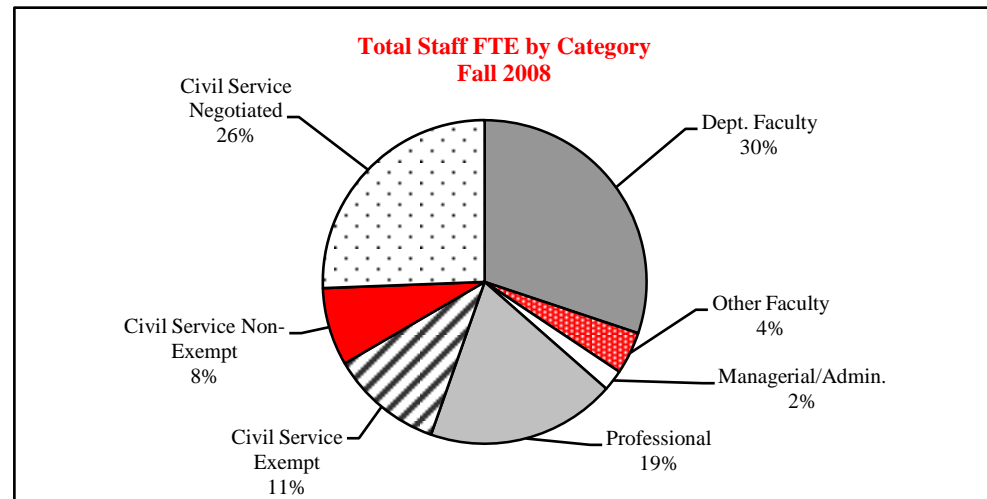




# FACULTY/STAFF

## EMPLOYEE FULL-TIME EQUIVALENCY ~ FALL 2007 and FALL 2008

<u>Employee Category</u>	<u>Fall 2007</u>			<u>Fall 2008</u>		
	<u>Full-Time Number</u>	<u>Part-Time FTE</u>	<u>Total FTE</u>	<u>Full-Time Number</u>	<u>Part-Time FTE</u>	<u>Total FTE</u>
Departmental Faculty <sup>1</sup>	843	96.5	939.5	859	106.6	965.6
Non-Departmental Faculty	7	2.9	9.9	7	3.8	10.8
Library Faculty	28	0.1	28.1	30	0.0	30.0
Lab School Faculty	94	3.6	97.6	90	4.9	94.9
Managerial/Administrative	65	0.9	65.9	66	1.2	67.2
Professional	584	29.8	613.8	579	26.9	605.9
Civil Service						0.0
Exempt	325	2.3	327.3	358	1.8	359.8
Non-Exempt	204	16.8	220.8	236	13.5	249.5
Negotiated	834	14.8	848.8	811	9.8	820.8
Civil Service Total	1,363	33.9	1,396.9	1,405	25.0	1,430.0
University Total	2,984	167.8	3,151.8	3,036	168.5	3,204.5



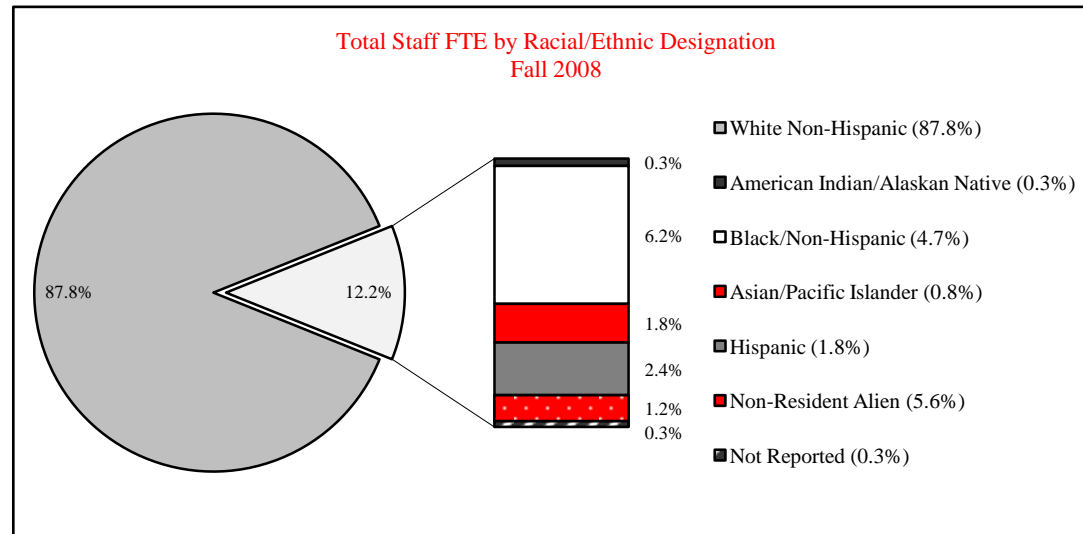
<sup>1</sup> Includes Department Chairs and part-time faculty whose major appointment is Administrative/Professional or Civil Service



# FACULTY/STAFF

## CATEGORY, GENDER AND RACIAL/ETHNIC DESIGNATION ~ FALL 2008

	Faculty				Administrative/ Professional	Civil Service	Total
	Departmental <sup>1</sup>	Non-Dept.	Library	Lab School			
<b>Gender</b>							
Male	596	9	11	24	308	647	1,595
Female	587	18	19	74	393	795	1,886
<b>Racial/Ethnic Designation</b>							
American Indian/Alaskan Native	3	--	--	--	1	8	12
Black/Non-Hispanic	65	1	--	3	49	99	217
Asian/Pacific Islander	35	--	--	1	9	16	61
Hispanic	25	--	--	1	17	40	83
White/Non-Hispanic	1,028	26	28	93	606	1,277	3,058
Non-Resident Alien	23	--	2	--	15	1	41
Not Reported	4	--	--	--	4	1	9
<b>Total</b>	<b>1,183</b>	<b>27</b>	<b>30</b>	<b>98</b>	<b>701</b>	<b>1,442</b>	<b>3,481</b>



<sup>1</sup> Includes Department Chairs

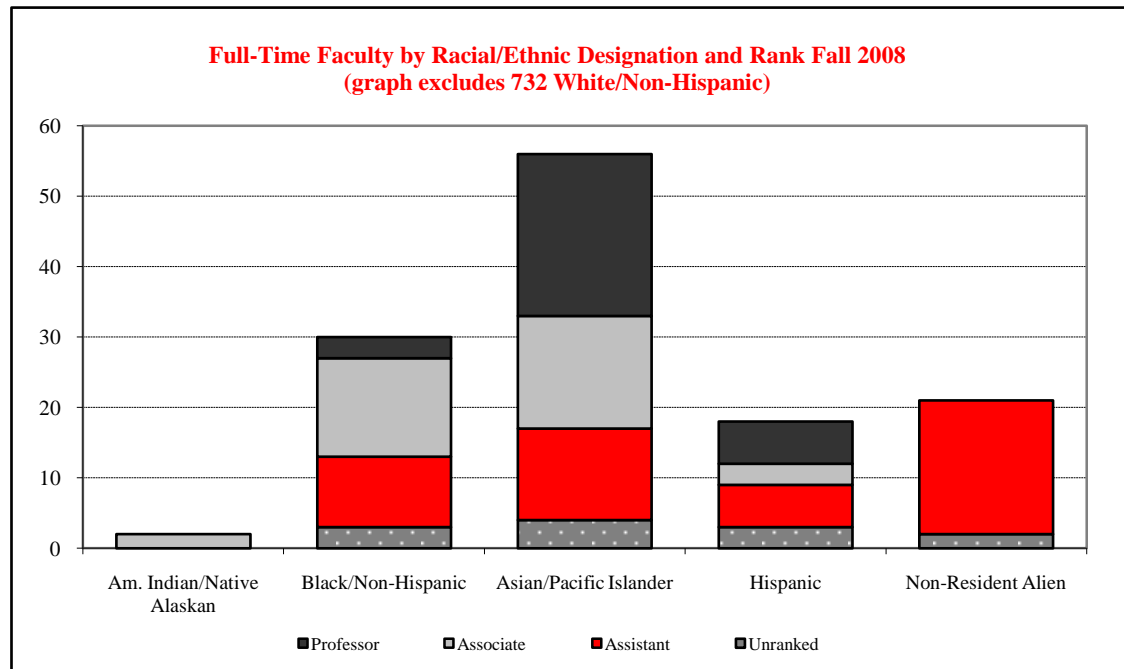


# FACULTY

## RANK AND RACIAL/ETHNIC DESIGNATION ~ FALL 2008

<u>Faculty - Full-Time</u>	American	Black/	Asian/		White/	Not	Non-	<u>Total</u>
	Indian/ Native <u>Alaskan</u>	Non- Hispanic	Pacific Islander	Hispanic	Non- Hispanic	Reported	Resident <u>Alien</u>	
Professor	--	3	23	6	201	--	--	233
Associate Professor	2	14	16	3	212	--	--	247
Assistant Professor	--	10	13	6	166	--	19	214
Unranked	--	3	4	3	153	--	2	165
<b>Total</b>	<b>2</b>	<b>30</b>	<b>56</b>	<b>18</b>	<b>732</b>	<b>--</b>	<b>21</b>	<b>859</b>

<u>Faculty - Part-Time</u>	American	Black/	Asian/		White/	Not	Non-	<u>Total</u>
	Indian/ Native <u>Alaskan</u>	Non- Hispanic	Pacific Islander	Hispanic	Non- Hispanic	Reported	Resident <u>Alien</u>	
Unranked	1	5	9	7	296	4	2	324

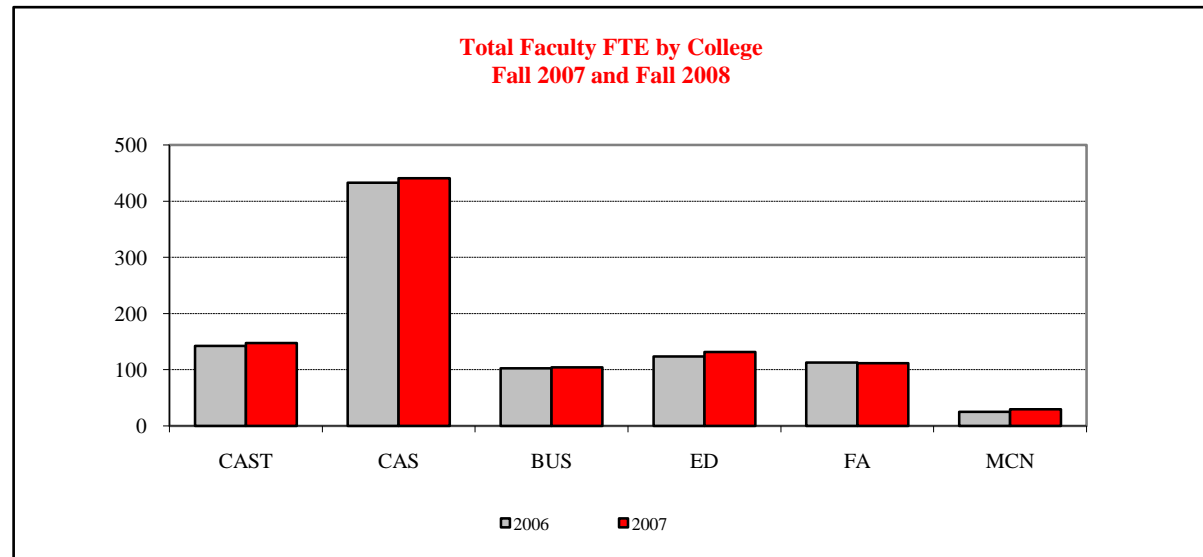




# FACULTY

## FTE<sup>1</sup> BY COLLEGE, GENDER & TENURE STATUS ~ FALL 2007 and FALL 2008

College	Fall 2007					Fall 2008				
	Tenured/Tenure Track		Non-Tenure Track		Total	Tenured/Tenure Track		Non-Tenure Track		Total
	Male	Female	Male	Female		Male	Female	Male	Female	
Applied Science and Technology	65.0	36.0	15.9	25.6	142.6	67.0	34.0	17.5	29.1	147.5
Arts and Sciences	201.0	124.0	50.1	57.9	433.0	199.0	133.0	45.7	62.8	440.5
Business	61.0	22.0	11.4	8.2	102.6	59.0	22.0	12.5	10.8	104.3
Education	30.0	40.0	9.4	44.2	123.6	30.0	44.0	11.1	46.5	131.6
Fine Arts	48.0	42.0	9.7	12.8	112.6	50.0	44.0	7.8	10.1	111.9
Mennonite College of Nursing	0.0	11.0	0.8	13.4	25.2	0.0	12.0	1.1	16.7	29.8
<u>Total</u>	405.0	275.0	97.4	162.1	939.5	405.0	289.0	95.6	176.0	965.6



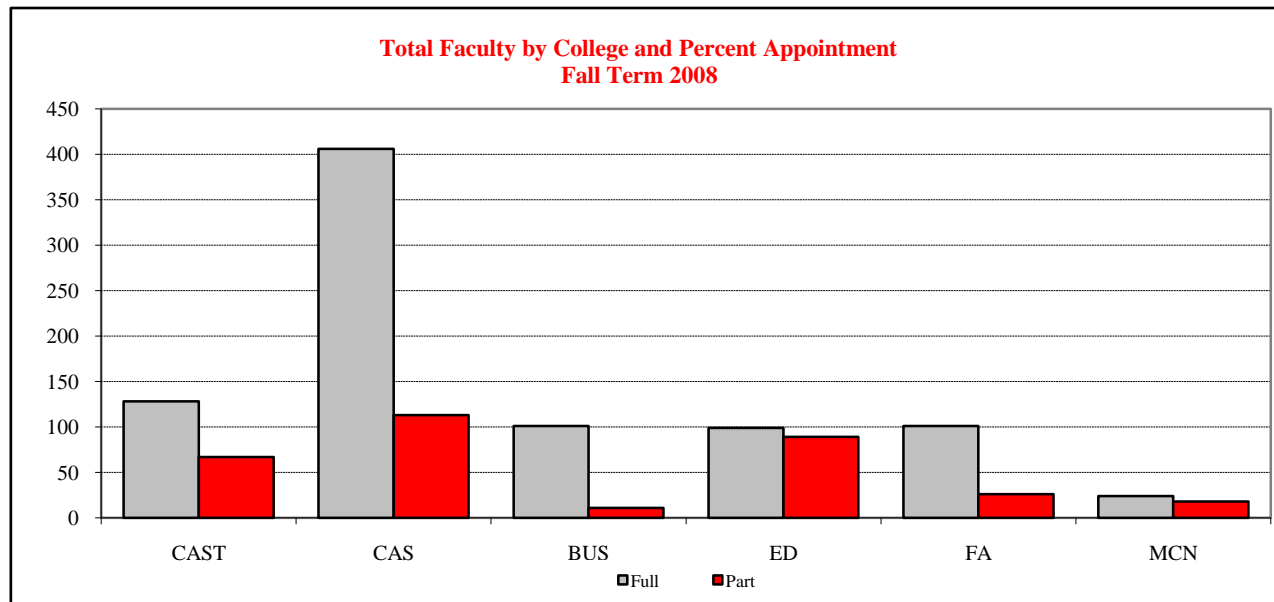
<sup>1</sup> Full-Time Equivalent (FTE) Faculty



# FACULTY

## COLLEGE & PERCENT APPOINTMENT ~ FALL 2002 through FALL 2008

College	2002		2003		2004		2005		2006		2007		2008	
	Full	Part	Full	Part	Full	Part	Full	Part	Full	Part	Full	Part	Full	Part
Applied Science and Technology	129	47	131	44	131	47	129	49	129	51	124	60	128	67
Arts and Sciences	406	96	405	80	393	90	392	100	408	92	398	106	406	113
Business	91	19	94	18	93	14	91	11	95	10	100	10	101	11
Education	98	62	96	77	87	83	87	84	92	80	95	83	99	89
Fine Arts	105	19	103	13	109	11	109	15	109	14	105	20	101	26
Mennonite College of Nursing	18	11	17	6	18	12	21	15	23	10	21	14	24	18
<b>Total</b>	<b>847</b>	<b>254</b>	<b>846</b>	<b>238</b>	<b>831</b>	<b>257</b>	<b>829</b>	<b>274</b>	<b>856</b>	<b>257</b>	<b>843</b>	<b>293</b>	<b>859</b>	<b>324</b>





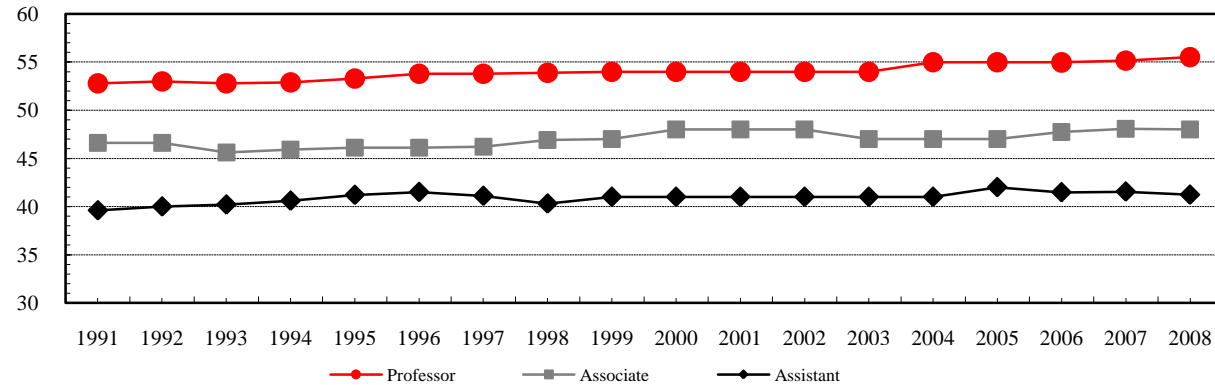


# FACULTY

## TENURED/TENURE TRACK DEPARTMENTAL, AGE BY RANK ~ FALL 2008

<u>Age<sup>1</sup> Range</u>	<u>Professor</u>	<u>Associate Professor</u>	<u>Assistant Professor</u>	<u>Total</u>
29 or Less	--	--	11	11
30 - 34	--	5	44	49
35 - 39	2	34	45	81
40 - 44	11	54	49	114
45 - 49	39	51	25	115
50 - 54	48	45	23	116
55 - 59	64	40	13	117
60 - 64	46	11	4	61
65 or Over	23	7	--	30
Total	233	247	214	694

**Average Age<sup>1</sup> of Tenured/Tenure Track  
Departmental Faculty  
Fall 1991 through Fall 2008**



<sup>1</sup> Age is calculated as of December 31<sup>st</sup> of the reported year.



# FACULTY/STAFF

## FALL TO FALL RETENTION RATES

	Year of Initial Hire						
	<u>2002</u>	<u>2003</u>	<u>2004</u>	<u>2005</u>	<u>2006</u>	<u>2007</u>	<u>2008</u>
<u>New Full-Time Assistant Professors</u>							
Number of New Hires	56	42	31	25	33	35	40
Percent that Returned 2nd Fall	96.4	100.0	90.3	100.0	97.0	94.3	--
Percent that Returned 4th Fall	76.8	92.9	74.2	80.0	--	--	--
Percent that Returned 6th Fall	69.6	73.8	--	--	--	--	--
<u>New Full-Time Non Tenure-Track Faculty</u>							
Number of New Hires	31	20	14	30	42	22	31
Percent that Returned 2nd Fall	83.9	55.0	64.3	60.0	57.1	72.7	--
Percent that Returned 4th Fall	61.3	30.0	64.3	33.3	--	--	--
Percent that Returned 6th Fall	51.6	25.0	--	--	--	--	--
<u>New Full-Time Lab School Faculty</u>							
Number of New Hires	6	4	10	4	12	10	13
Percent that Returned 2nd Fall	50.0	75.0	100.0	75.0	83.3	90.0	--
Percent that Returned 4th Fall	33.3	75.0	50.0	50.0	--	--	--
Percent that Returned 6th Fall	33.3	75.0	--	--	--	--	--
<u>New Full-Time Administrative/Professional</u>							
Number of New Hires	78	52	70	93	95	97	70
Percent that Returned 2nd Fall	79.5	73.1	77.1	80.6	75.8	78.4	--
Percent that Returned 4th Fall	59.0	55.8	50.0	52.7	--	--	--
Percent that Returned 6th Fall	42.3	38.5	--	--	--	--	--
<u>New Full-Time Civil Service</u>							
Number of New Hires	101	27	24	111	93	131	131
Percent that Returned 2nd Fall	84.2	100.0	91.7	91.0	90.3	86.3	--
Percent that Returned 4th Fall	75.2	88.9	75.0	84.7	--	--	--
Percent that Returned 6th Fall	61.4	70.4	--	--	--	--	--

A new hire is defined as a staff member who was present that fall but not in the previous fall. He/she may have been hired any time between the two falls. A rehired person is counted as a new hire, if a year had elapsed between leaving and rehire. A person who changed appointment types, that was still employed by the University in a subsequent fall at a 50% or more FTE, was counted as being retained. Faculty include departmental faculty only.



# FACULTY/STAFF

## FALL TO FALL RETENTION RATES ~ MINORITY

	Year of Initial Hire						
	<u>2002</u>	<u>2003</u>	<u>2004</u>	<u>2005</u>	<u>2006</u>	<u>2007</u>	<u>2008</u>
<u>New Full-Time Assistant Professors</u>							
Number of New Hires	5	3	3	4	6	4	8
Percent that Returned 2nd Fall	80.0	100.0	66.7	100.0	83.3	100.0	--
Percent that Returned 4th Fall	80.0	100.0	66.7	75.0	--	--	--
Percent that Returned 6th Fall	80.0	33.3	--	--	--	--	--
<u>New Full-Time Administrative/Professional</u>							
Number of New Hires	11	12	10	6	11	15	12
Percent that Returned 2nd Fall	81.8	75.0	90.0	66.7	72.7	86.7	--
Percent that Returned 4th Fall	45.5	41.7	60.0	50.0	--	--	--
Percent that Returned 6th Fall	45.5	25.0	--	--	--	--	--
<u>New Full-Time Civil Service</u>							
Number of New Hires	12	3	2	18	13	25	15
Percent that Returned 2nd Fall	91.7	100.0	50.0	88.9	76.9	88.0	--
Percent that Returned 4th Fall	75.0	66.7	50.0	88.9	--	--	--
Percent that Returned 6th Fall	50.0	66.7	--	--	--	--	--



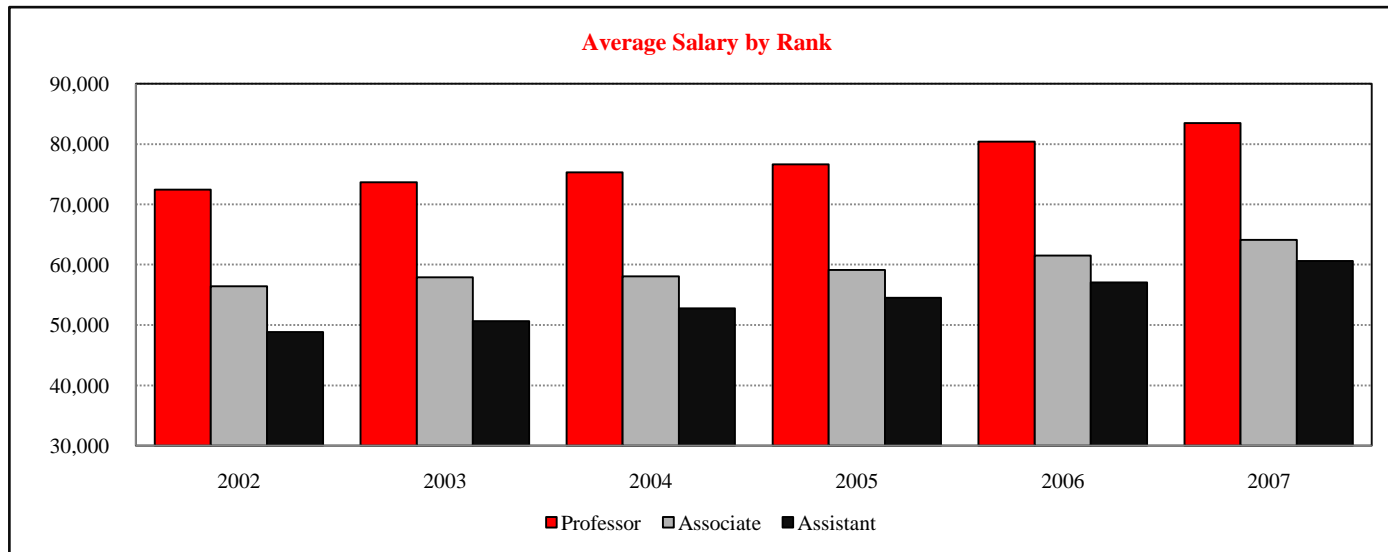
# FACULTY/STAFF

## AVERAGE ANNUAL SALARY ~ FALL 2002 THROUGH FALL 2007

Average Annual Salary for Tenured/Tenure Track Faculty<sup>1</sup>

<u>Faculty - Full-Time</u>	<u>Fall 2002</u>		<u>Fall 2003</u>		<u>Fall 2004</u>		<u>Fall 2005</u>		<u>Fall 2006</u>		<u>Fall 2007</u>	
	<u>Number</u>	<u>Average</u>	<u>Number</u>	<u>Average</u>	<u>Number</u>	<u>Average</u>	<u>Number</u>	<u>Average</u>	<u>Number</u>	<u>Average</u>	<u>Number</u>	<u>Average</u>
Professor	235	72,430	230	73,684	234	75,319	235	76,653	240	80,408	236	83,458
Associate Professor	177	56,414	183	57,909	197	58,090	210	59,101	223	61,514	226	64,108
Assistant Professor	284	48,818	289	50,618	277	52,749	245	54,485	228	57,041	218	60,632

<sup>1</sup>Data reported annually to American Association of University Professors.







ILLINOIS STATE UNIVERSITY

# RESOURCES

DID YOU KNOW?

Braden Auditorium is named after Samuel J. Braden, who served as president from 1967 until 1970.





# RESOURCES

## TOTAL EXPENDITURES & MANDATORY TRANSFERS ~ FY 2004 through 2008

(Dollars in thousands)

	<u>Total Operating Funds by Fund Type</u>				
	<u>Fiscal Year 2004</u>	<u>Fiscal Year 2005</u>	<u>Fiscal Year 2006</u>	<u>Fiscal Year 2007</u>	<u>Fiscal Year 2008</u>
State Appropriated Tax Funds and					
University Income Fund	\$138,379.6	\$143,945.4	\$155,310.5	\$164,753.6	\$174,895.9
Gifts, Grants and Contracts	31,844.5	32,314.6	35,076.6	34,066.6	35,606.1
Agency	47,011.3	50,378.1	43,134.4	43,070.9	45,422.9
Bond Revenue/Other Auxiliary	45,921.3	46,087.9	49,947.0	51,076.8	54,904.0
Total <sup>1</sup>	\$263,156.7	\$272,726.0	\$283,468.5	\$292,967.9	\$310,828.9

	<u>State Appropriated Funds by Object Class</u>				
	<u>Fiscal Year 2004</u>	<u>Fiscal Year 2005</u>	<u>Fiscal Year 2006</u>	<u>Fiscal Year 2007</u>	<u>Fiscal Year 2008</u>
Personal Services	\$102,942.4	\$107,337.9	\$111,510.2	\$120,862.8	\$125,890.4
Contractual	16,673.9	16,800.0	20,967.5	18,604.6	22,022.2
Equipment and Books	6,129.5	6,395.4	8,320.9	8,026.7	8,316.2
Commodities	2,546.1	2,736.7	2,592.0	2,669.6	2,530.1
Other	5,782.5	6,310.7	7,479.3	9,946.1	11,399.9
Group Health Insurance	3,078.3	3,078.0	3,078.3	3,078.3	3,078.3
Medicare	1,227.0	1,286.7	1,362.3	1,565.5	1,658.8
Total	\$138,379.7	\$143,945.4	\$155,310.5	\$164,753.6	\$174,895.9

	<u>State Appropriated Funds by Functional Classification</u>				
	<u>Fiscal Year 2004</u>	<u>Fiscal Year 2005</u>	<u>Fiscal Year 2006</u>	<u>Fiscal Year 2007</u>	<u>Fiscal Year 2008</u>
Instruction	\$79,548.9	\$81,102.5	\$85,015.6	\$88,904.1	\$92,100.3
Operation and Maintenance	16,757.5	18,768.6	21,511.7	24,335.1	28,307.1
Institutional Support	14,543.4	14,947.2	16,363.0	18,148.4	18,572.9
Organized Research	2,483.9	2,553.4	2,980.8	1,887.1	2,136.4
Public Service	2,649.3	2,703.2	2,735.6	3,017.5	3,660.8
Academic Support	12,820.6	13,090.0	14,599.6	15,915.0	16,324.4
Student Services	5,270.7	6,415.5	7,663.6	7,902.6	9,056.9
Group Health Insurance	3,078.3	3,078.3	3,078.3	3,078.3	3,078.3
Medicare	1,227.0	1,286.7	1,362.3	1,565.5	1,658.8
Total	\$138,379.6	\$143,945.4	\$155,310.5	\$164,753.6	\$174,895.9

<sup>1</sup> Excludes payments made on behalf of the University (e.g. retirement contributions); \$103.6 million in FY04, \$43.8 million in FY05, \$42.2 million in FY06, \$47.7 million in FY07, and \$53.5 million in FY08.



# RESOURCES

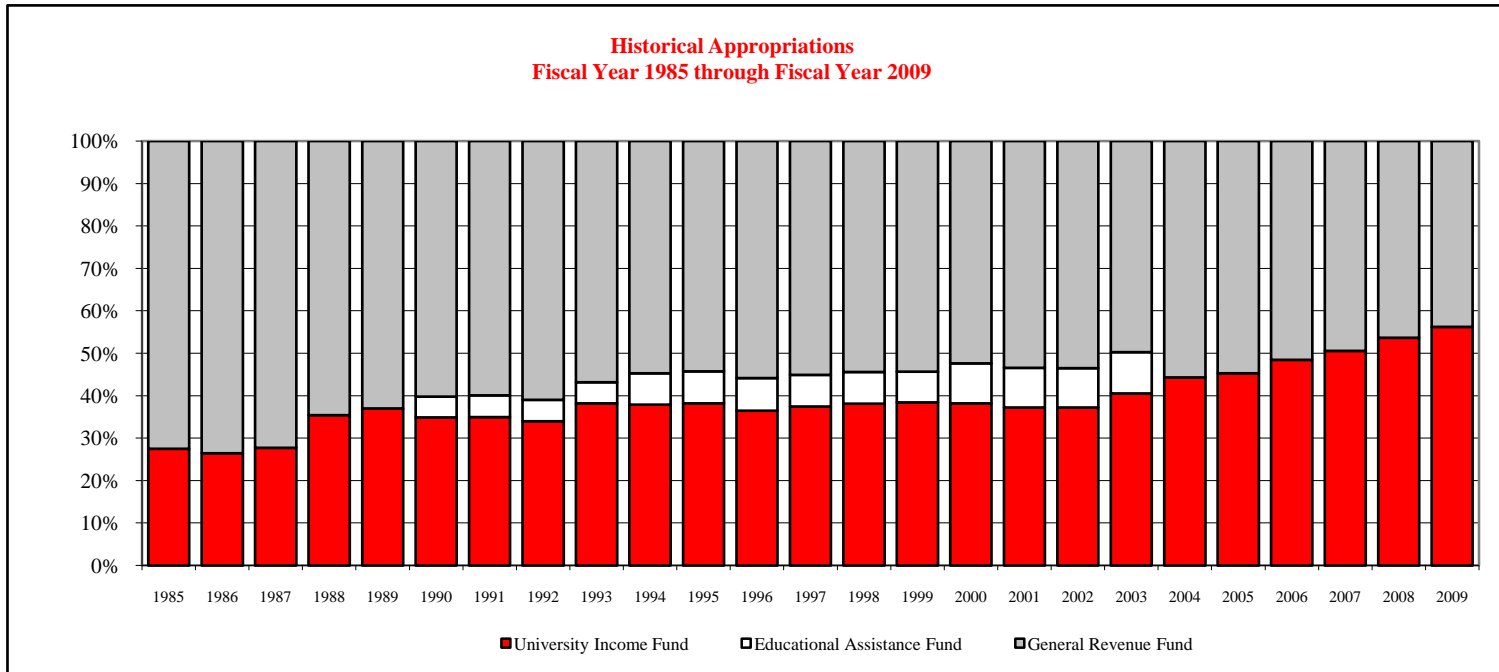
## HISTORICAL APPROPRIATIONS ~ FISCAL YEARS 2005 through 2009

(dollars in thousands)

Historical Appropriations and University Income Fund for Operations and Grants by Fund Source<sup>1</sup>

	<u>Fiscal Year 2005</u>	<u>Fiscal Year 2006</u>	<u>Fiscal Year 2007</u>	<u>Fiscal Year 2008</u>	<u>Fiscal Year 2009</u>
General Revenue Fund	\$80,452.0	\$80,452.0	\$81,457.5	\$82,986.8	\$85,096.4
University Income Fund	66,676.0	75,580.2	83,280.7	96,206.9	109,351.4
<b>Total Appropriation</b>	<b>\$147,128.0</b>	<b>\$156,032.2</b>	<b>\$164,738.2</b>	<b>\$179,193.7</b>	<b>\$194,447.8</b>

<sup>1</sup> Excludes Retirement







# RESOURCES

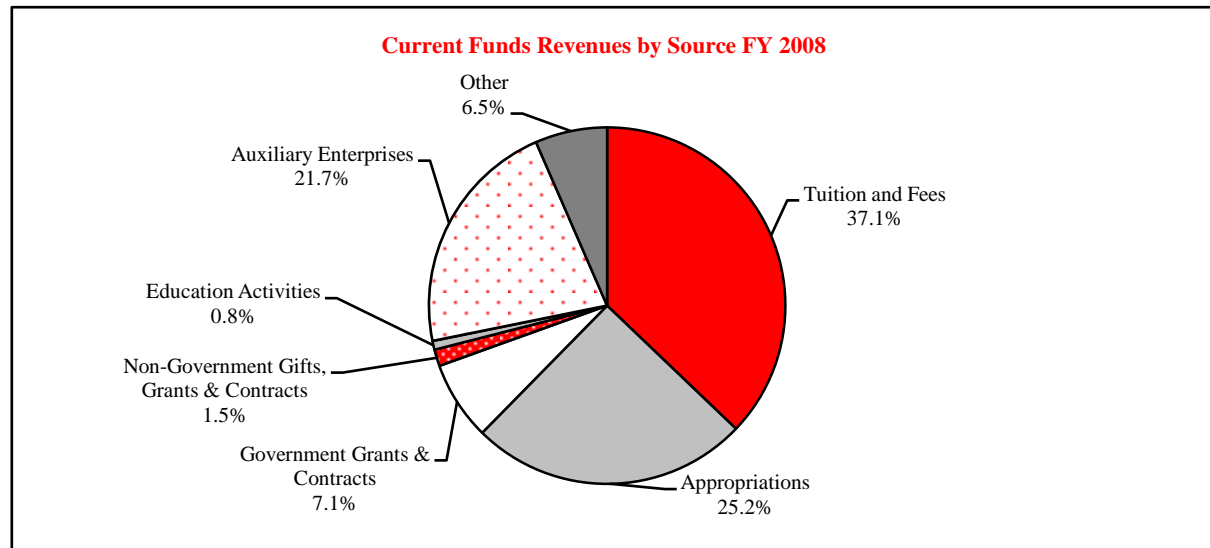
## CURRENT FUNDS REVENUES BY SOURCE ~ FISCAL YEARS 2007 AND 2008

<u>Source</u>	<u>Fiscal Year 2007</u>		<u>Fiscal Year 2008</u>	
	<u>Amount (\$000)</u>	<u>Percent of Total</u>	<u>Amount (\$000)</u>	<u>Percent of Total</u>
Tuition and Fees	\$108,623	35.6	\$122,216	37.1
State Government Tax Funds Appropriations	81,458	26.7	82,987	25.2
Government Grants and Contracts				
Federal	18,554	6.1	20,617	6.3
State	2,939	1.0	2,906	0.9
Non-Governmental Gifts, Grants and Contracts	3,569	1.2	4,975	1.5
Sales & Services of Education Activities	2,460	0.8	2,622	0.8
Sales & Services of Auxiliary Enterprises	67,176	22.0	71,253	21.7
Other Sources	20,193	6.6	21,488	6.5
Total	\$304,971 <sup>1</sup>	100.0%	\$329,065 <sup>2</sup>	100.0%

<sup>1</sup> Excludes \$47.7 million in Payments on Behalf of the University.

<sup>2</sup> Excludes \$53.5 million in Payments on Behalf of the University.

Source: Report of the Comptroller





# RESOURCES

## SPONSORED RESEARCH, INSTRUCTION, CREATIVE WORKS, & SERVICE

### Submissions (Proposals submitted between July 1 and June 30)

	Fiscal Year 2005		Fiscal Year 2006		Fiscal Year 2007		Fiscal Year 2008	
	Amount	Number	Amount	Number	Amount	Number	Amount	Number
Research	\$37,210,230	159	\$37,382,033	132	\$37,225,623	161	\$25,245,877	142
Instruction	15,497,255	90	9,086,459	107	8,883,901	89	14,892,071	81
Creativity	3,000	1	--	--	--	--	--	--
Public Service	10,659,302	34	3,878,898	40	13,999,692	53	9,672,354	38
Other	4,975,977	33	4,529,753	27	2,591,988	19	3,881,537	44
Total	\$68,345,764	317	\$54,877,143	306	\$62,701,204	322	\$53,691,839	305

### Awards (Approved between July 1 and June 30)

	Fiscal Year 2005		Fiscal Year 2006		Fiscal Year 2007		Fiscal Year 2008	
	Amount	Number	Amount	Number	Amount	Number	Amount	Number
Research	\$6,418,946	98	\$7,638,262	89	\$6,893,719	81	\$7,056,879	83
Instruction	3,278,838	100	5,859,754	94	4,815,984	91	4,767,867	82
Creativity	--	--	--	--	--	--	--	--
Public Service	2,890,754	33	2,935,127	42	4,037,888	45	7,107,953	37
Other	7,793,624	31	2,703,835	25	2,347,904	17	3,377,914	30
Total	\$20,382,162	262	\$19,136,978	250	\$18,095,495	234	\$22,310,613	232

### Awards by Type of Funding

	Fiscal Year 2005		Fiscal Year 2006		Fiscal Year 2007		Fiscal Year 2008	
	Amount	Percent	Amount	Percent	Amount	Percent	Amount	Percent
Federal Awards	\$11,006,392	54.0	\$9,342,249	48.8	\$6,791,781	37.5	\$7,628,305	34.2
Federal Flow-through	3,141,919	15.4	2,287,440	12.0	2,636,180	14.6	3,291,098	14.8
State Awards	2,976,389	14.6	4,609,945	24.1	3,707,312	20.5	3,866,501	17.3
Corporate Awards	128,706	0.6	141,500	0.7	404,530	2.2	466,792	2.1
Other Awards	3,128,756	15.4	2,755,844	14.4	4,555,692	25.2	7,057,917	31.6
Total Awards	\$20,382,162	100.0	\$19,136,978	100.0	\$18,095,495	100.0	\$22,310,613	100.0

<sup>1</sup> Includes Conference Services contracts.

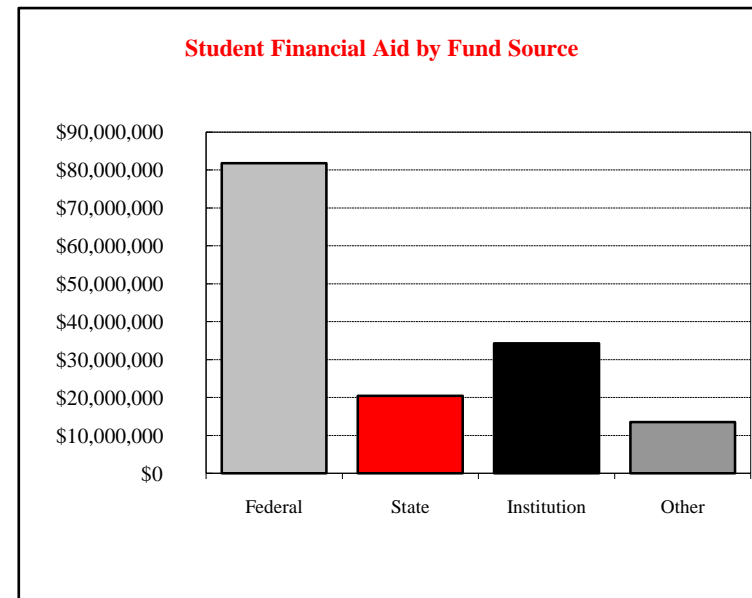
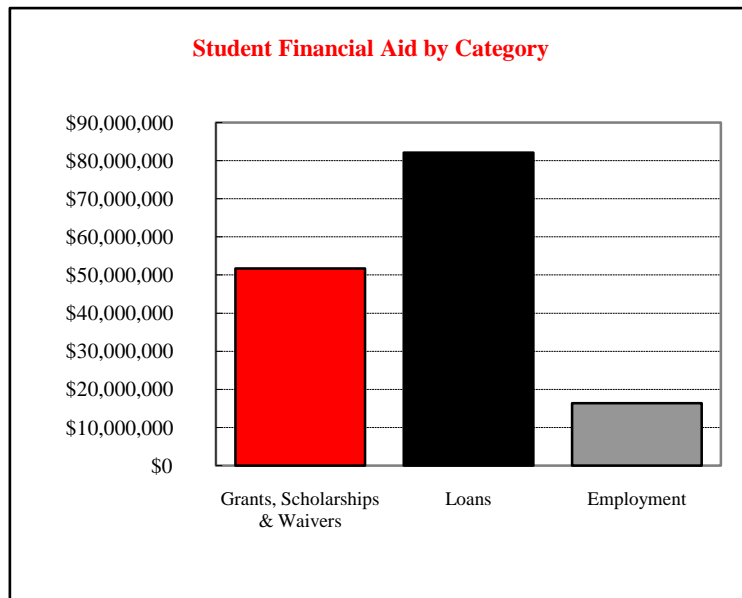


# RESOURCES

## STUDENT FINANCIAL AID & INSTITUTIONAL SUPPORT ~ FISCAL YEAR 2008<sup>1</sup>

Type	Fund Source				Total	Number Awarded
	Federal	State	Institution	Other		
Grants, Scholarships & Waivers	\$10,548,555	\$20,450,978	\$18,629,102	\$2,036,567	\$51,665,202	20,234
Loans	\$70,585,089	--		\$11,462,163	\$82,047,252	17,779
Employment	\$695,086	--	\$15,632,983	--	\$16,328,069	5,916
Total	\$81,828,730	\$20,450,978	\$34,262,085	\$13,498,730	\$150,040,523	

Approximately 73.3 percent of all students who attend the University receive assistance through loans, scholarships, tuition waivers, grants, and employment.



<sup>1</sup> The Financial Aid Fiscal Year is Fall, Spring and Summer.



# RESOURCES

## Resident

		<u>Per Credit Hour</u>		
<u>School Year</u>	<u>Tuition Plan<sup>1</sup></u>	<u>Tuition Rate</u>	<u>Required Fees</u>	
<b>Current Rates</b>	2008-09	New <sup>2</sup>	256.00	60.40
		Continuing 2 Yr	233.00	56.91
		Continuing 3 Yr	205.00	52.45
		Continuing 4 Yr	180.00	46.70
		Continuing 5+ Yr	160.00	43.20
<b>Historical Rates</b>	2007-08	New <sup>2</sup>	233.00	56.91
		Continuing 2 Yr	205.00	52.45
		Continuing 3 Yr	180.00	46.70
		Continuing 4 Yr	160.00	43.20
		Continuing 5+ Yr	137.43	40.57
	2006-07	New <sup>2</sup>	205.00	52.45
		Continuing 2 Yr	180.00	46.70
		Continuing 3 Yr	160.00	43.20
		Continuing 4+ Yr	137.43	40.57

## Non-Resident

		<u>Per Credit Hour</u>		
<u>School Year</u>	<u>Tuition Plan<sup>1</sup></u>	<u>Tuition Rate</u>	<u>Required Fees</u>	
<b>Current Rates</b>	2008-09	New <sup>2</sup>	477.00	60.40
		Continuing 2 Yr	477.00	56.91
		Continuing 3 Yr	428.00	52.45
		Continuing 4 Yr	376.00	46.70
		Continuing 5+ Yr	334.00	43.20
<b>Historical Rates</b>	2007-08	New <sup>2</sup>	477.00	56.91
		Continuing 2 Yr	428.00	52.45
		Continuing 3 Yr	376.00	46.70
		Continuing 4 Yr	334.00	43.20
		Continuing 5+ Yr	286.43	40.57
	2006-07	New <sup>2</sup>	428.00	52.45
		Continuing 2 Yr	376.00	46.70
		Continuing 3 Yr	334.00	43.20
		Continuing 4+ Yr	286.43	40.57

# UNDERGRADUATE STUDENT TUITION & FEE RATES

## Full-Time (based on 15 credit hours per semester) Annual

<u>Insurance required of all students</u>			
<u>taking 9 or more credit hours</u>	<u>Tuition</u>	<u>Required Fees</u>	<u>Total</u>
322.00	7,680.00	1,812.00	9,814.00
322.00	6,990.00	1,707.30	9,019.30
322.00	6,150.00	1,573.50	8,045.50
322.00	5,400.00	1,401.00	7,123.00
322.00	4,800.00	1,296.00	6,418.00
322.00	6,990.00	1,707.30	9,019.30
322.00	6,150.00	1,573.50	8,045.50
322.00	5,400.00	1,401.00	7,123.00
322.00	4,800.00	1,296.00	6,418.00
322.00	4,122.90	1,217.10	5,662.00
316.00	6,150.00	1,573.50	8,039.50
316.00	5,400.00	1,401.00	7,117.00
316.00	4,800.00	1,296.00	6,412.00
316.00	4,122.90	1,217.10	5,656.00

## Full-Time (based on 15 credit hours per semester) Annual

<u>Insurance required of all students</u>			
<u>taking 9 or more credit hours</u>	<u>Tuition</u>	<u>Required Fees</u>	<u>Total</u>
322.00	14,310.00	1,812.00	16,444.00
322.00	14,310.00	1,707.30	16,339.30
322.00	12,840.00	1,573.50	14,735.50
322.00	11,280.00	1,401.00	13,003.00
322.00	10,020.00	1,296.00	11,638.00
322.00	14,310.00	1,707.30	16,339.30
322.00	12,840.00	1,573.50	14,735.50
322.00	11,280.00	1,401.00	13,003.00
322.00	10,020.00	1,296.00	11,638.00
322.00	8,592.90	1,217.10	10,132.00
316.00	12,840.00	1,573.50	14,729.50
316.00	11,280.00	1,401.00	12,997.00
316.00	10,020.00	1,296.00	11,632.00
316.00	8,592.90	1,217.10	10,126.00

<sup>1</sup> Guaranteed tuition and fees (insurance not included) freeze began in fall 2003; the number of years tuition will remain frozen depends on primary major/sequence carried on the last day of the last undergraduate semester attended within the four continuous calendar years after being classified as enrolled as a degree-seeking student.

<sup>2</sup> New - Students enrolled for their first semester in a degree-seeking program and in attendance on census day.



# RESOURCES

## GRADUATE STUDENT TUITION & FEE RATES

### Resident

		<u>Per Credit Hour</u>		
<u>School Year</u>	<u>Tuition Plan</u>	<u>Tuition Rate</u>	<u>Required Fees</u>	
<b>Current Rates</b>	2008-09	All	\$204.00 \$60.40	
<b>Historical Rates</b>	2007-08	All	194.00 56.91	
	2006-07	All	185.00 52.45	
	2005-06	All	170.00 46.70	
	2004-05	All	145.00 43.20	
	2003-04	New <sup>1</sup>	138.43	40.57
		Continuing	122.49	40.57
	2002-03 <sup>2</sup>	All	122.49	40.57
2001-02	All	112.14	40.57	
2000-01	All	108.30	39.20	

<u>Full-Time (based on 9 credit hours per semester) Annual</u>			
<u>Insurance required of all students</u>			
<u>taking 9 or more credit hours</u>	<u>Tuition</u>	<u>Required Fees</u>	<u>Total</u>
\$322.00	\$3,672.00	\$1,087.20	\$5,081.20
322.00	3,492.00	1,024.38	4,838.38
316.00	3,330.00	944.10	4,590.10
290.00	3,060.00	840.60	4,190.60
232.00	2,610.00	777.60	3,619.60
190.00	2,491.74	730.26	3,412.00
190.00	2,204.82	730.26	3,125.08
180.00	2,204.82	730.26	3,115.08
172.00	2,018.52	730.26	2,920.78
176.00	1,949.40	705.60	2,831.00

### Non-Resident

		<u>Per Credit Hour</u>		
<u>School Year</u>	<u>Tuition Plan</u>	<u>Tuition Rate</u>	<u>Required Fees</u>	
<b>Current Rates</b>	2008-09	All	\$424.00 \$60.40	
<b>Historical Rates</b>	2007-08	All	404.00 56.91	
	2006-07	All	386.00 52.45	
	2005-06	All	355.00 46.70	
	2004-05	All	303.00 43.20	
	2003-04	New <sup>1</sup>	288.43	40.57
		Continuing	265.00	40.57
	2002-03 <sup>2</sup>	All	265.00	40.57
2001-02	All	245.00	40.57	
2000-01	All	324.90	39.20	

<u>Full-Time (based on 9 credit hours per semester) Annual</u>			
<u>Insurance required of all students</u>			
<u>taking 9 or more credit hours</u>	<u>Tuition</u>	<u>Required Fees</u>	<u>Total</u>
\$322.00	\$7,632.00	\$1,087.20	\$9,041.20
322.00	7,272.00	1,024.38	8,618.38
316.00	6,948.00	944.10	8,208.10
290.00	6,390.00	840.60	7,520.60
232.00	5,454.00	777.60	6,463.60
190.00	5,191.74	730.26	6,112.00
190.00	4,770.00	730.26	5,690.26
180.00	4,770.00	730.26	5,680.26
172.00	4,410.00	730.26	5,312.26
176.00	5,848.20	705.60	6,729.80

<sup>1</sup> New - Students enrolled for their first semester in a degree-seeking program and in attendance on census day.

<sup>2</sup> Prior to fall 2002 fees were capped at 12 hours per semester; Beginning in fall 2002 fees charged for each credit hour up to and including 16 hours per semester - no additional fees charged for credit hours in excess of 16 hours per semester.





ILLINOIS STATE UNIVERSITY

# REFERENCE

DID YOU KNOW?

The first commencement ceremony was held in 1860 for a graduating class of 10.

The University has 173,129 living alumni.





# REFERENCE

CIP	Program	B.A.	B.S.	B.S. Ed.	B.M. Ed.	B.S.W.	B.F.A.	B.M.
01.0000	Agriculture		x					
01.0102	Agribusiness		x					
09.0101	Communication Studies	x	x					
09.0102	Mass Communication	x	x					
09.0401	Journalism	x	x					
09.0902	Public Relations	x	x					
11.0103	Information Systems		x					
11.0701	Computer Science		x					
11.0901	Telecommunications Management		x					
13.1001	Special Education		x	x				
13.1202	Elementary Education		x	x				
13.1203	Middle Level Teacher Education		x	x				
13.1209	Early Childhood Education		x	x				
13.1303	Business Teacher Education	x	x	x				
13.1307	Health Education		x	x				
13.1309	Technology Education		x					
13.1312	Bachelor of Music Education				x			
13.1314	Physical Education	x	x	x				
13.1318	Social Sciences Education	x	x					
15.0503	Renewable Energy		x					
15.0612	Industrial Technology		x					
16.0501	German	x						
16.0901	French	x						
16.0905	Spanish	x						
19.0101	Family and Consumer Sciences	x	x					
23.0101	English	x						
24.0101	Interdisciplinary Studies	x	x					
24.0102	University Studies	x	x					
26.0101	Biological Sciences		x					
26.0202	Biochemistry and Molecular Biology		x					
27.0101	Mathematics	x	x					
31.0301	Recreation and Park Administration		x					
31.0505	Exercise Science		x					
38.0101	Philosophy	x						

# UNDERGRADUATE PROGRAM INVENTORY ~ FALL 2008

CIP	Program	B.A.	B.S.	B.S. Ed.	B.M. Ed.	B.S.W.	B.F.A.	B.M.	B.S.N.
40.0501	Chemistry		x						
40.0601	Geology		x						
40.0801	Physics		x						
42.0101	Psychology	x	x						
43.0104	Criminal Justice Sciences	x	x						
44.0701	Bachelor of Social Work				x				
45.0201	Anthropology	x	x						
45.0601	Economics	x	x						
45.0701	Geography	x	x						
45.1001	Political Science	x	x						
45.1101	Sociology	x	x						
50.0501	Theatre	x	x						
50.0701	Art	x	x						
50.0702	B.F.A. in Art						x		
50.0901	Music (Liberal Arts)	x	x						
50.0903	Music Performance							x	
50.9999	Arts Technology	x	x						
51.0204	Speech Pathology and Audiology		x						
51.0706	Health Information Management		x						
51.0913	Athletic Training		x						
51.1005	Clinical Laboratory Science		x						
51.1601	Nursing								x
51.2202	Environmental Health		x						
51.2206	Safety		x						
52.0201	Business Administration		x						
52.0301	Accountancy		x						
52.0801	Finance		x						
52.1101	International Business	x	x						
52.1201	Business Information Systems		x						
52.1301	Management		x						
52.1401	Marketing		x						
52.1701	Insurance		x						
54.0101	History	x	x						





# REFERENCE

# GRADUATE PROGRAM INVENTORY ~ FALL 2008

## Masters Level

CIP	Program	M.A.	M.S.	M.S.Ed.	M.M.Ed.	M.S.W.	M.F.A.	M.S.N.	M.M.	M.B.A.	B.S./M.P.A.
01.0102	Agribusiness	x									
09.0101	Communication	x	x								
11.0103	Information Systems	x									
13.0301	Curriculum and Instruction	x	x								
13.0401	Educational Administration	x	x								
13.0501	Instructional Tech. & Design	x									
13.1001	Special Education	x	x								
13.1102	College Student Personnel Admin.	x									
13.1312	Master of Music Education			x							
13.1315	Reading		x								
15.0612	Technology	x									
16.0101	Languages, Literatures, & Cultures	x									
19.0101	Family and Consumer Sciences	x	x								
23.0101	English	x	x								
23.0401	Writing	x	x								
26.0101	Biological Sciences		x								
27.0101	Mathematics		x								
31.0501	Kinesiology and Recreation		x								
40.0501	Chemistry		x								
40.0699	Hydrogeology		x								
42.0101	Psychology	x	x								
42.0601	Clinical-Counseling Psychology	x	x								
43.0104	Criminal Justice Sciences	x	x								
44.0701	Master of Social Work				x						
45.0301	Historical Archaeology	x	x								
45.0601	Applied Economics	x	x								
45.1001	Political Science	x	x								
45.1101	Sociology	x	x								
50.0501	Theatre	x	x								
50.0501	M.F.A. in Theatre					x					
50.0701	Art	x	x								
50.0702	M.F.A. in Art					x					
50.0901	Master of Music							x			

## Masters Level

CIP	Program	M.A.	M.S.	M.S.Ed.	M.M.Ed.	M.S.W.	M.F.A.	M.S.N.	M.M.	M.B.A.	B.S./M.P.A.
50.9999	Arts Technology		x								
51.0204	Speech Pathology and Audiology	x	x								
51.1605	Nursing						x				
52.0201	Business Administration								x		
52.0301	Master of Professional Accountancy										x
52.0301	Accountancy		x								
54.0101	History	x	x								

## IBHE Approved Certificate Level

CIP	Program	P.B.	P.M.	S.S.P.	P.M.F.N.P.
13.0301	Alt. Route for Sec. Teacher Certification	x			
23.0401	Teaching of Writing High/Middle School	x			
13.0402	Director of Special Education		x		
13.0409	Education Admin. & General Admin.		x		
13.0411	Education Admin. & Superintendent		x		
13.0499	Educ. Adm. & Chief School Bus. Official		x		
42.1701	School Psychology			x	
51.1605	Family Nurse Practitioner				x

## Doctoral Level

CIP	Program	Aut.D.	Ed.D.	Ph.D.
13.0301	Curriculum and Instruction		x	
13.0401	Educational Administration		x	x
13.1001	Special Education		x	
13.1311	Mathematics Education			x
23.0101	English Studies			x
26.0101	Biological Sciences			x
42.1701	School Psychology			x
51.0204	Audiology	x		



# REFERENCE

# PEER INSTITUTIONS

## Illinois Board of Higher Education Comparison Group

Institution	State
University of Alabama, Birmingham	AL
Northern Arizona University	AZ
University of California, Santa Cruz	CA
University of Northern Colorado	CO
Florida Atlantic University	FL
University of South Florida	FL
Georgia State University	GA
Illinois State University	IL
Ball State University	IN
Indiana State University, Terre Haute	IN
Indiana University, Indianapolis	IN
University of Louisville	KY
University of New Orleans	LA
Western Michigan University	MI
University of Missouri, Kansas City	MO
University of Southern Mississippi	MS
University of North Carolina, Greensboro	NC
Rutgers University, Camden Campus	NJ
SUNY at Albany	NY
Cleveland State University	OH
Ohio University, Athens	OH
University of Toledo	OH
University of South Dakota, Vermillion	SD
University of Memphis	TN
Texas A & M University, Commerce	TX
Texas Woman's University	TX
University of Houston, University Park	TX
University of North Texas	TX
University of Texas, Dallas	TX
University of Wisconsin, Milwaukee	WI

## Illinois Board of Higher Education Subset

Institution	State
Northern Arizona University	AZ
University of Northern Colorado	CO
Florida Atlantic University	FL
Georgia State University	GA
Illinois State University	IL
Ball State University	IN
Indiana State University, Terre Haute	IN
University of New Orleans	LA
Western Michigan University	MI
University of Southern Mississippi	MS
University North Carolina, Greensboro	NC
Cleveland State University	OH
University of Toledo	OH
University of Memphis	TN
Texas A & M University, Commerce	TX
University of North Texas	TX

## Benchmark Group used for most Comparison Studies

Institution	State
University of California, Riverside	CA
University of California, Santa Cruz	CA
Ball State University	IN
University of North Carolina, Greensboro	NC
Bowling Green State University	OH
Miami University	OH
Clemson University	SC
University of Wisconsin, Milwaukee	WI



# REFERENCE

## UNIVERSITY DEFINITIONS

### STUDENT TERMS

**Census Day:** The University's official date for enrollment. The first day of class following the 10<sup>th</sup> day of class in each semester.

**Certificates:** Illinois State University currently offers three types of certificates at the graduate level:

- **Graduate Certificate:** Requires a minimum of nine but no more than 17 semester hours of graduate courses beyond the bachelor's degree. This type of certificate is **not** approved/reviewed by the Illinois Board of Higher Education (IBHE).
- **Post-Baccalaureate Graduate Certificate:** Requires a minimum of 18 semester hours of graduate courses beyond the baccalaureate degree, but less than required for a masters' degree. This type of certificate is approved/reviewed by the IBHE.
- **Post-Master's Graduate Certificate:** Requires a minimum of 24 semester hours of graduate courses beyond the master's degree but less than a doctoral degree. This type of certificate is approved/reviewed by the IBHE.

**CIP Codes:** Classification of Instructional Programs (CIP) A federal coding system used to provide a taxonomic scheme that will support the accurate tracking, assessment, and reporting of fields of study and program completions activity.

**Cohort:** The number of new beginning freshmen in a given fall semester. Used in calculating retention of students returning for their second fall semester and in calculating University graduation rates.

**Credit Hour:** A standard unit of measuring course work; credit hours are assigned to a particular course and count toward graduation.

**Degree Program:** A program which has specific requirements and number of credits, including a common core for all students seeking a particular degree. Degree programs are approved through a curricular process through the Illinois Board of Higher Education.

**Full-Time Enrollment:** For undergraduate students – 12 or more credit hours; for graduate students nine or more credit hours per semester.

**Full-Time Equivalent (FTE):** Total number of credit hours divided by 15 for undergraduate students; and by nine for graduate students.

**Grade Point Average (GPA):** The total number of grade points divided by the total graded semester hours attempted at Illinois State University.

**Graduation Rate:** Total number of new beginning freshmen students who complete their degree within 6 years of normal time divided by the number in the original cohort.

**Headcount:** The count of each student enrolled at the University.

**Interdisciplinary:** A program or course that spans two or more academic disciplines.

**Major or Program:** A cohesive combination of courses, including introductory, intermediate, and advanced course work, that designates a student's primary area of specialization.

**Minorities:** Includes American Indian/Native Alaskan, Black/Non-Hispanic, Asian/Pacific Islander, and Hispanic racial/ethnic designations. Non-Resident Alien is not included as a minority.

**Native Students:** Students who start as new beginning freshmen at Illinois State University.

**New Beginning Freshmen:** First-time, first year students who have not attended any college since graduating from high school (includes students who attend a college or university the summer after high school graduation, students with advanced placement credits, and students who took courses for college credit while attending high school).

**New Students:** Students attending Illinois State University for the first time (Illinois State University baccalaureate recipients entering their first semester working on a second bachelor's degree are considered readmitted students).

**Non-Degree Seeking:** A student who has not been admitted to a program leading toward a degree; these include unclassified students, students-at-large, and students working toward a non-IBHE approved/reviewed graduate certificate.

**Non-Resident:** A student whose principal residence is not in Illinois.



# REFERENCE

## UNIVERSITY DEFINITIONS

### STUDENT TERMS (CONTINUED)

**Non-Resident Alien:** International students who are neither a citizen nor a permanent resident of the United States.

**On-and Off-Campus:** Students are considered "off-campus" if all of their courses meet at a location other than a University facility; they are considered an "on-campus" student if any or all of their courses meet at a University facility.

**Retention Rate:** Number of new beginning freshmen who return for their second fall semester divided by the original cohort.

**Semester:** A semester at Illinois State is the 16-week academic session offered each fall and spring. The summer session is not considered a semester.

**Show Rate:** Ratio of students who enrolled compared to the number who were accepted.

**Transfer Student:** Students who previously attended one or more semesters at a community or four-year college after graduating from high school (whether or not any course work was completed).

**Unclassified Students:** A person who desires to take classes at the University without working toward a specific degree.

**Yield Rate:** Ratio of the number of students who were accepted compared to the number of students that applied.

### EMPLOYEE TERMS

**Administrative/Professional:** Appointments primarily for the purpose of mission support and include a wide range of responsibilities.

- Administrative (A):** Employees with primary executive, administrative and managerial assignments. These assignments involve planning, organizing, managing and directing the university and its sub units with a reporting line of three levels from the President and a salary level of 55.

- Managerial (M):** These employees are considered to be primary policy decision making administrators who report directly to the President or to one of the Vice Presidents of the University. This group would include the President, Vice Presidents, Deans and Associate Vice Presidents.

- Professional (P):** All Administrative/Professional employees who are not designated as Administrative (A) or Managerial (M).

**Civil Service:** Civil Service positions are governed by the State Universities Civil Service System. Candidates must demonstrate their ability to perform by passing a test specifically designed for the job. Areas of Civil Service employment include professional, technical, clerical, crafts and service. The civil service system has four classifications of employees:

- Exempt:** Excluded from overtime provisions of the Fair Labor Standards Act; typically managers and administrators.

- Non-Exempt:** Paid by the hour and eligible for overtime under provisions of the Fair Labor Standards Act.

- Negotiated:** Civil Service employees belonging to a union with a negotiated contract.

- Extra Help:** Hired to work without benefits for a limited time (up to 900 hours) and without requirement of a civil service examination.

**Emeritus:** Retired faculty with rank who continue employment at Illinois State University are accorded the privilege of retaining their professorial title after retirement with the added designation of the word "emeritus" or "emerita."

**Faculty:** Any Tenure-Track or Non-Tenure Track appointment, ranked or unranked, for the purpose of instruction, organized research, and/or public service in one of the academic (credit hour producing) departments and related areas.

**Departmental:** Faculty teaching in an academic department.

**Non-departmental:** Faculty in a non-academic department such as University College instructors.

**Lab School Associates:** Appointments that do not hold rank in an academic department and are assigned primarily to Thomas Metcalf School or University High School.

**Library Faculty:** Hold academic rank and are assigned primarily to the Library.



# REFERENCE

## UNIVERSITY DEFINITIONS

### EMPLOYEE TERMS (CONTINUED)

**Full-time:** A work schedule of 37.5 to 40 hours per week; considered to be 100 percent.

**Minorities:** Includes American Indian/Native Alaskan, Black Non-Hispanic, Asian/Pacific Islander, and Hispanic racial/ethnic designations. Non-Resident Alien is not included as a minority.

**Non-Tenure Track:** Appointments for full and part-time appointments are for a specific purpose and for a specified period of time appropriate to that purpose. No time served in any of the non-tenure track titles counts toward fulfillment of a probationary period leading to tenure.

**Part-time:** A work schedule of less than 100 percent.

**Tenure:** Tenure is an important means of protecting the rights of members of the faculty to freedom of inquiry, research, discourse, teaching, learning and publications. Tenure entails the faculty member's obligation to strive continuously to improve competence and to cooperate with colleagues in an effort to improve the quality of scholarship and teaching at the institution. The freedom and security provided through academic tenure are fundamental to the success of a university in fulfilling its obligations. After the expiration of a probationary period, faculty have permanent or continuous tenure, and their service should be terminated only for adequate cause, except in the case of retirement for age, or under extraordinary circumstances because of financial exigencies.

**Tenured/Tenure Track:** Tenure is granted by the University under the authority granted to the President by the Board of Trustees. Tenure appointments are held only in academic departments or similar academic units.

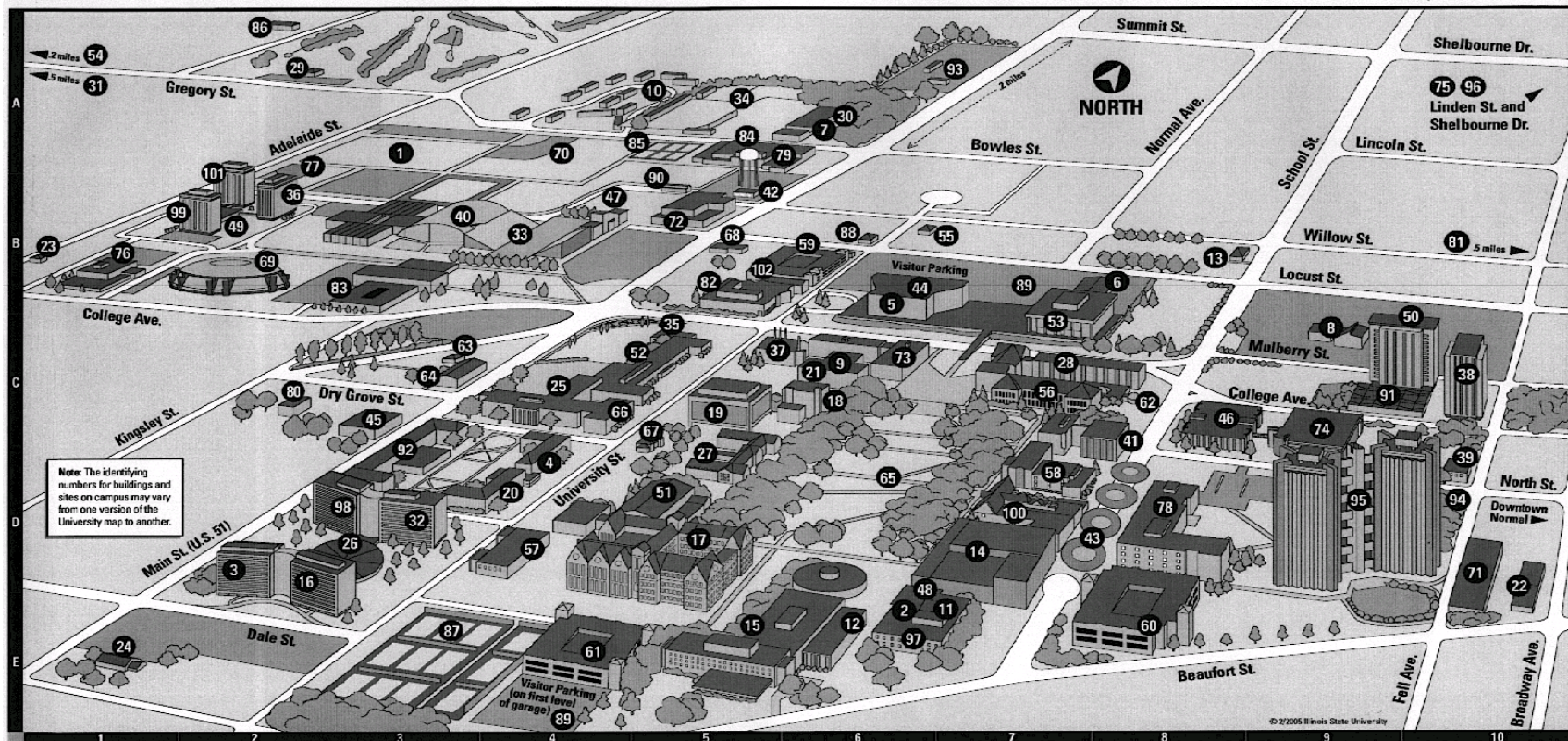
**Rank:** The academic ranks that are conferred for tenure at Illinois State University are: Professor, Associate Professor, and Assistant Professor. Promotion within the academic ranks is recommended by the Provost to the President for approval.

### OTHER TERMS

**IBHE:** Illinois Board of Higher Education, the statewide planning and coordinating board for higher education in Illinois, approves/reviews degree programs, provides budget recommendations to the Governor and General Assembly, administers a variety of grant programs, approves operating authority for independent institutions, engages in master planning, and maintains comprehensive high education databases.

**IPEDS:** The Integrated Postsecondary Education Data System conducted by National Center of Education Statistics (NCES). IPEDS began in 1986 and involves annual data collections. Survey data are required from all postsecondary institutions that have a Program Participation Agreement (PPA) with the Office of Postsecondary Education, U.S. Department of Education. IPEDS also requests limited data from approximately 3,000 other schools offering postsecondary education programs.

# CAMPUS MAP



- |   |   |   |   |  |
|---|---|---|---|--|
| 1 Adelaide Soccer Field - A3                                      | 22 Extended University - E10                        | 43 In Exchange - D8                                     | 64 Professional Development Building - C3                       | 85 University High School Tennis Courts - A5             |
| 2 Allen Theatre - E6  | 23 Eyestone School Museum - B1                      | 44 InfoCentre - B8                                      | 65 Quad - D6  | 86 University (President's) Residence - A2               |
| 3 Atkin Hall (ATK) - D2   | 24 Facilities Planning Building - E1                | 45 Instructional Technology and Development Center - C3 | 66 Rachel Cooper (RC) - C4                                      | 87 University Street Tennis Courts - E3                  |
| 4 Barton Hall - D4  | 25 Fairchild Hall (FH) - C4                         | 46 Julian Hall (JH) - C8                                | 67 Rambo House - C5   | 88 Vidette Building - B6                                 |
| 5 Bone Student Center/Braden Auditorium - B6                      | 26 Feeney Dining Center - D3                        | 47 Kaufman Football Building - B4                       | 68 Recreation Services Building - B5                            | 89 Visitor Parking - B7 and E4                           |
| 6 Bowling & Billiards Center (BBC) - B8                           | 27 Fell Hall (FEL) - C5                             | 48 Kamp Recital Hall - E6                               | 69 Redbird Arena (RBA) - B2                                     | 90 Vitro Center (VIT) - B5                               |
| 7 Campus Dining Services - A6                                     | 28 Felmley Hall of Science (FSA, FHS) - C8          | 49 Links Dining Center (LIN) - B2                       | 70 Redbird Baseball Field - A4                                  | 91 Vrooman Dining Center (VRO) - C9                      |
| 8 Campus Religious Center - C9                                    | 29 Golf Course, Illinois State University (GC) - A3 | 50 Manchester Hall - C10                                | 71 Research Services Building - D10                             | 92 Walker Hall (WAL) - C3                                |
| 9 Capen Auditorium - C6   | 30 Green Food Service Building, John - A6           | 51 McCormick Hall (MCH) - D5                            | 72 Ropp Agriculture Building (RAB) - B5                         | 93 Waller Parking and Transportation Building, Bill - A7 |
| 10 Cardinal Court - A5  | 31 Gregory Street Property - A1                     | 52 Metcalf School, Thomas (MLS) - C5                    | 73 Schroeder Hall (SCH) - C6                                    | 94 Watterson Dining Center (WD) - D10                    |
| 11 Centennial East (CE) - E7                                      | 32 Hamilton Hall - D3                               | 53 Milner Library (MLB) - C7                            | 74 Science Laboratory Building (SLB) - C9                       | 95 Watterson Towers - D9                                 |
| 12 Centennial West (CW) - E6                                      | 33 Hancock Stadium - B4                             | 54 Motorcycle Driving Range - A1                        | 75 Shelbourne Apartments - A10                                  | 96 Wellness House - A10                                  |
| 13 Center for Intercultural Relations - B8                        | 34 Harris Physical Plant, Carter - A5               | 55 Motorcycle Safety Program Office - B7                | 76 Smith Building, Nelson (NSB) - B1                            | 97 Washoff Theatre - E6                                  |
| 14 Center for the Performing Arts - D7                            | 35 Hayden Auditorium - C5                           | 56 Moulton Hall (MLT) - C7                              | 77 Softball Field - B2  | 98 Whitten Hall - D3                                     |
| 15 Center for the Visual Arts and University Galleries (CVA) - E5 | 36 Haynie Hall - B2                                 | 57 Office of Residential Life Building - D4             | 78 Stevenson Hall, Adlai E. (STV) - D8                          | 99 Wilkins Hall - B2                                     |
| 16 Colby Hall (COL) - D2  | 37 Heating Plant - C5                               | 58 Old Union Building (OU) - D7                         | 79 Stroud Auditorium - A5                                       | 100 Williams Hall (WIH) - D7                             |
| 17 College of Business Building - D5                              | 38 Hewett Hall (HEW) - C10                          | 59 Parking Garage, North University Street - B6         | 80 Student Accounts Building - C2                               | 101 Wright Hall - B2                                     |
| 18 Cook Hall (CH) - C6  | 39 Honors Program - D10                             | 60 Parking Garage, School Street - E8                   | 81 Student Recreation Building (Willow and Beech Streets) - B10 | 102 211 North University Street - B5                     |
| 19 DeGarmo Hall (DEG) - C5  | 40 Horton Field House (HTN) - B3                    | 61 Parking Garage, South University Street - E4         | 82 Student Services Building - B5                               |  |
| 20 Dunn Hall - D4   | 41 Hovey Hall (Administration) - C8                 | 62 Planetarium - C8                                     | 83 Turner Hall (TUR) - B3                                       |  |
| 21 Edwards Hall (EDW) - C5  | 42 Hudson Building - B5                             | 63 Professional Development Annex - C3                  | 84 University High School (UH) - A5                             |  |