

Illinois State University



FactBook Fall 2004

Planning and Institutional Research
<http://www.pir.ilstu.edu>
Illinois State University
Normal, IL 61790-3490
(309) 438-8393
December 2004

ILLINOIS STATE
UNIVERSITY



*Planning and
Institutional Research*

202 Julian Hall
Campus Box 3490
Normal, IL 61790-3490
Telephone: (309) 438-839
Facsimile: (309) 438-5283

November 2004

Dear Colleague:

The eighteenth annual Planning and Institutional Research *FactBook* contains a collection of useful information designed to answer the frequently asked questions about Illinois State University. The information is presented in a variety of formats, each chosen to enhance the reader's understanding of Illinois State University.

The University opened its doors to students in 1857, conferring the first undergraduate degrees in 1860. Illinois State began offering master's degree programs in 1943 and Doctoral work was introduced in 1962. Currently the University offers sixty-six undergraduate programs, thirty-nine master's programs, seven doctoral programs, a Specialist in School Psychology and six graduate level certificates.

For additional or more detailed information about Illinois State University, please call Planning and Institutional Research at (309) 438-8393. The data presented in this publication are available on the internet at the Planning and Institutional Research website at: www.pir.ilstu.edu/universityfacts.htm.

New to this year's publication are summaries of University progress and goals stated in the University's strategic plan *Educating Illinois: An Action Plan for Distinctiveness and Excellence at Illinois State University*. Through *Educating Illinois*, Illinois State University is quickly becoming the first-choice public university in Illinois for high-achieving motivated students who desire an individualized educational experience combined with the resources of a large public university. Additional information on *Educating Illinois* is available at <http://www.educatingillinois.ilstu.edu/>.

Sincerely,

Joseph A. Rives

Dr. Joseph A. Rives
Director of University Planning
Planning and Institutional Research

Robin K. Gould

Robin K. Gould
Research Associate,
Planning and Institutional Research

TABLE OF CONTENTS

TABLE OF CONTENTS i

UNIVERSITY INFORMATION

Educating Illinois Mission, Vision and Values 1

Board of Trustees 2

Organizational Charts for the:

Office of the President 4

Office of Vice President for Academic Affairs and Provost 5

Office of Vice President for Finance and Planning 6

Office of Vice President for Student Affairs 7

Office of Vice President for University Advancement 8

Academic College Deans, Department Chairs, and School Directors 9

Endowed Chairs 10

University Calendar 11

Undergraduate Programs Offered 12

Graduate Programs Offered 13

Program Review Cycle 14

STUDENT INFORMATION

Student Section Overview 15

New Students

Completed Applications, Acceptances, and Enrollments - On-Campus - Fall 2000 through Fall 2004 16

Completed Applications, Acceptances, and Enrollments by Racial/Ethnic - Fall 2000 through Fall 2004 17

ACT Scores New Beginning Freshmen by College with State and National Comparisons – Fall 2000 through 2004 18

ACT Scores New Beginning Freshmen by High School Percentile – Fall 2003 and Fall 2004 19

ACT Score Distribution New Beginning Freshmen with Sub-scores – Fall 2004 20

New Students by Class and Type of Admission – Fall 2002 through Fall 2004 21

Enrollment

Headcount and Full-Time Equivalence Enrollment On- and Off-Campus by Class – Fall 2000 through Fall 2004 22

Undergraduate and Graduate Headcount Enrollment by College – Fall 2000 through Fall 2004 23

Undergraduate and Graduate Headcount Enrollment by Racial/Ethnic Designation – Fall 2000 through Fall 2004 24

Enrollment by Age, Gender, and Hours Carried – Fall 2004 26

Undergraduate and Graduate Headcount Enrollment by Gender and College – Fall 2004 27

Undergraduate Headcount Enrollment by College, Department, and Major – Fall 2000 through Fall 2004 28

Graduate Headcount Enrollment by Level, College, Department, and Major – Fall 2000 through Fall 2004 30

Undergraduate Headcount Enrollment by Racial/Ethnic Designation, College, Department, and Major – Fall 2004 33

Graduate Headcount Enrollment by Racial/Ethnic Designation, College, Department and Major – Fall 2004 35

Enrollment by Geographic Location – Fall 2004 38

Enrollment by Level, Semester Hours Carried and Illinois Residency 40

Historical Enrollment by Level – Fall 1975 through Fall 2004 41

Degrees

Historical Degrees by Level – Fiscal Year 1975 through Fiscal Year 2004 41

Degrees Conferred by College, Level, Department, and Major – Fiscal Year 2000 through Fiscal Year 2004 42

Degrees Conferred by College, Level, Racial/Ethnic Designation and Gender – Fiscal Year 2004 48

Class Size Distribution for Courses with Undergraduate Students – Fall 2001 through Fall 2004 49

Time to Degree for Baccalaureate Degree Recipients – Initial Cohort Fall 1995 through Fall 1999 50

Retention and Graduation Rates

Persistence of Freshmen Cohorts – All Students and by Gender 51

Persistence of Freshmen Cohorts – Black Non-Hispanic, and Hispanic Students 52

Graduation Rates of Freshmen Cohorts – All Students and by Gender 53

Graduation Rates of Freshmen Cohorts – Black Non-Hispanic, and Hispanic Students 54

TABLE OF CONTENTS

FACULTY/STAFF INFORMATION

University Staff

University Staff Number and FTE by Employee Category – Fall 2004 55
Faculty/Staff by Employee Type, Gender and Racial/Ethnic Designation Fall 2002 through Fall 2004..... 56

Departmental Faculty

Departmental Faculty by Tenure Status, Percent Appointment, Gender, and Racial/Ethnic Designation – Fall 2000 through Fall 2004..... 57
Departmental Faculty by College, Department, and Percent Appointment – Fall 2000 through Fall 2004..... 58
Departmental Faculty by College, Department, Rank, and Percent Appointment – Fall 2004 59
Departmental Faculty by College, Rank, Gender, and Racial/Ethnic Designation – Fall 2004..... 60
Tenure/Tenure Track Departmental Faculty by Rank and Age – Fall 2004 61
Departmental Student Full-Time Equivalent/Faculty Full-Time Equivalent Ratio – Fall 2004 62

Staff Retention

Retention of New Full-Time Staff by Appointment Type – Fall 1995 to Fall 2004..... 63
Retention of New Full-Time Staff by Appointment Type and Minority Status – Fall 1995 to Fall 2004..... 65

INSTITUTIONAL RESOURCES

Historical State Appropriations for Operations and Grants by Source of Funds – Fiscal Year 2001 through Fiscal Year 2005 67
Total Expenditures and Mandatory Transfers – Fiscal Year 2000 through Fiscal Year 2004 68
Current Funds Revenues by Source – Fiscal Year 2003 and Fiscal Year 2004..... 69
Instructional Expenditures per Full-time Equivalent (FTE) Student at Illinois Public Universities – Fiscal Year 2003 70
Credit Hours Produced Per Faculty Staff-Year at Illinois Public Universities – Fiscal Year 2003 71
Proportion of Departmental Faculty Staff-Years Devoted to Functions at Illinois Public Universities – FY2003..... 72
Sponsored Research, Instruction, Creative Works, and Service – Fiscal Year 2001 through Fiscal Year 2004..... 73
Student Financial Aid and Institutional Support – Fiscal Year 2004..... 74

FACILITIES

Residence Hall Occupancy by Gender and Class Level – Fall 2000 through Fall 2004..... 75
Residence Buildings and Associated Facilities as of Fall 2004..... 76
Academic Buildings as of Fall 2004..... 77



*University
Information*

Educating Illinois 2003-2010

**Our Mission**

We at Illinois State University work as a diverse community of scholars with a commitment to fostering a small-college atmosphere with large-university opportunities. We promote the highest academic standards in our teaching, our scholarship, and the connections we build between them. We devote all of our resources and energies to creating the most supportive and productive community possible to serve the citizens of Illinois and beyond.

Our Heritage

The first public university in Illinois, Illinois State University was founded in 1857 as a normal university to prepare the state's teachers. Our institution has a rich heritage as the state's leader in all facets of teacher education – from classroom instruction to educational administration and national policy setting. Illinois State is the only doctoral research-intensive university in Illinois, offering more than 160 major/minor options in six colleges. The university's early emphasis on teacher preparation is reflected in our values-based commitment to creating an optimal learning environment for all Illinois State students, whether undergraduate or graduate, on campus or off campus.

Our Vision & Values

By acting on our values in every respect, Illinois State University will come to occupy a unique position of strength and visibility among the institutions of higher education in Illinois, nationally, and internationally. Illinois State University will continue to be the first-choice public university in Illinois for high-achieving, motivated students who seek an individualized educational experience combined with the resources of a large university.

Individualized Attention: Providing the supportive environment characteristic of a small college through an innovative general education program, strong student-faculty-staff connections, superior student services, and a focus on each student as an individual, with unique educational needs and potential: Illinois State is a campus dedicated to placing the learner at the center of teaching and scholarship.

Public Opportunity: Assuring students access to the educational, research, and service opportunities characteristic of a large university, including a wide range of high-quality programs, faculty mentors who are scholars and creative artists of repute in their disciplines, and the support of outstanding facilities, technologies, and library resources.

Active Pursuit of Learning and Scholarship: Working with students as partners in their educational development inside and outside of the classroom so that students come to appreciate learning as a active lifelong process; contributing new knowledge through research, creative artistry, and other forms of individual scholarship in which all students, faculty, and staff may participate.

Diversity: Encouraging community and an informed respect for differences among students, faculty, and staff by fostering an inclusive environment characterized by ethical behavior and social justice that prepares students to be fully engaged participants in a global society; a diverse faculty, and staff mentoring a diverse student population, enhancing pedagogical, research, and service functions.

Innovation: Supporting disciplinary excellence and personal growth of students, faculty, and staff through knowledge development and innovative applications in undergraduate and graduate study, pedagogy, research, creative activities, and public service.

Board of Trustees

The Board of Trustees of Illinois State University is the governing board for Illinois State University. The Board consists of seven members appointed by the Governor for overlapping six-year terms. The eighth member of the Board is a student selected annually by the University student body. The President of the University serves as the primary liaison, linking the Board's responsibilities for policy direction to the University's operational responsibilities for carrying out its mission.

Carl Kasten

On July 25, 2003, Carl Kasten was elected Chairperson of the Board of Trustees. Kasten was appointed to the first Illinois State University Board of Trustees in 1996 after serving on the Board of Regents. He was elected the Board secretary from January 1996 through July 2003.

Carl Kasten is a former member of the Illinois Board of Regents and is senior partner in the law firm of Phelps, Kasten, Ruyle, Burns, Sims, and Meyer P.C. in Carlinville.

He received a Bachelor of Arts degree from Illinois State University in social sciences in 1966 and received his law degree in 1969 from the Northwestern University School of Law, where he was a recipient of the Wigmore Key.

Kasten presently serves as the Board liaison to the Illinois State University Alumni Board. He is a member of several bar associations, including the Illinois Trial Lawyers Association on whose Board of Managers he previously served. He is also a member of several professional organizations. (term expires January 2007)

J.D. Bergman

J.D. Bergman was appointed by the Governor to the Board of Trustees to complete the term of William Sulaski who resigned in May 2003. Bergman, a Joliet resident, is president and CEO of Petco Petroleum Corporation, Hinsdale. He received his bachelor's degree in Business Administration from Illinois State University in 1970. Bergman is also chairman of the Board of American Heartland Bank and Trust Company, Sugar Grove and serves as a director of the Illinois Petroleum Resources Board. (term expires January 2005)

Jaime Flores

Jaime Flores is founder and President of Tamale Hut Cafe'. He is a 1980 graduate of Illinois State

University, where he majored in marketing, and a 1981 graduate of the Mexican-North American Institute on Cultural Relations in Mexico City.

Flores is a member of the Illinois State University Board of Trustees, Hispanic Midwest Voter Registration, Saint Leonard's Holy Name Society, Nazareth Academy Father's Club, and former Board of Director for the Hispanic Center of Western Michigan and Grand Rapids Goodwill Industries. (Term expires January 2005)

Nancy Froelich

Nancy Froelich is a licensed funeral director. She is a former trustee and chairperson of the Board of Governors, a trustee of the State Universities Retirement Systems and a past member of the Illinois Board of Higher Education. She is currently serving on the Civil Service Merit Board and actively participates in several community and state-wide organizations.

Froelich also served for eight years as chairperson of the McLean County Board and was a member of the Gridley School Board. Among many other community activities, Froelich also served on the executive committee of the McLean County Chamber of Commerce and Economic Development and the Mennonite College of Nursing.

She attended Illinois State University and Illinois Wesleyan University and has a degree from Eastern Illinois University. (term expires January 2005)

Diane Glenn

Diane Glenn is Vice President at First Bank of Oak Park, Oak Park, Illinois. In addition to service as a Trustee at Illinois State University, she serves on the Boards of Access Community Health Network - one of the largest federally qualified health centers organization in the country, and Blue Gargoyle, a youth service agency.

She attended Illinois State University and received a Bachelor of Science Degree in Business Administration and Marketing from Roosevelt University. (term expires January 2005)

Joanne E. Maitland

Joanne Maitland is a retired Assistant Finance Manager for the City of Bloomington Township. She is presently serving as President of McLean County Board of Health and member of the McLean County Extension Foundation Board. She has served as President of the United Way of McLean County, Board Member of United Way of Illinois, Secretary of the BroMenn Health Care Inc. Board of Directors, Board Member of the Mennonite College of Nursing, Chairman of the Margaret Esposito Scholarship Committee, Chairman of the Ewing Scholarship Committee and served in various other community functions. (term expires January 2007)

Stanley R. Ommen

On July 25, 2003, Stanley Ommen was elected to serve as Board secretary. Ommen was appointed to the Board of Trustees by Governor George Ryan in October 2000.

Stan Ommen is president and chief executive officer of State Farm's federal savings bank at the company's corporate headquarters. He spent the first 34 years of his professional life working in the banking industry for Champion Federal Savings & Loan Association, which became First of America Bank in 1993.

He is active in the local community holding such positions as board member and chairman of the ISU Foundation, and board member and vice chairman of the board of the Westminster Village Retirement Facility. He currently is a member of the Federal National Mortgage Association's Midwestern Regional Advisory Board. Mr. Ommen joined State Farm in 1997.

He earned his bachelor's degree in business administration from Illinois State University and his MBA from the University of Illinois. (term expires January 2007)

Student Trustee

Zach Koutsky

Zach Koutsky will be a junior in the 2004-2005 academic year, with a double major in Politics and Government and Sociology. He is from the Naperville area. Currently, Zach serves as the Vice President of the ISU College Democrats and has been an On-Campus Senator in Illinois State University's Student Government Association. He is a member of the Lambda Chi Alpha fraternity and serves as Precinct Committeeman and Deputy Registrar in DuPage County. Zach has worked as a landscaper for the past five years and includes running, politics, and landscaping as his favorite hobbies. (term: July 1, 2004 - June 30, 2005)

ISU Administration

President

C. Alvin Bowman

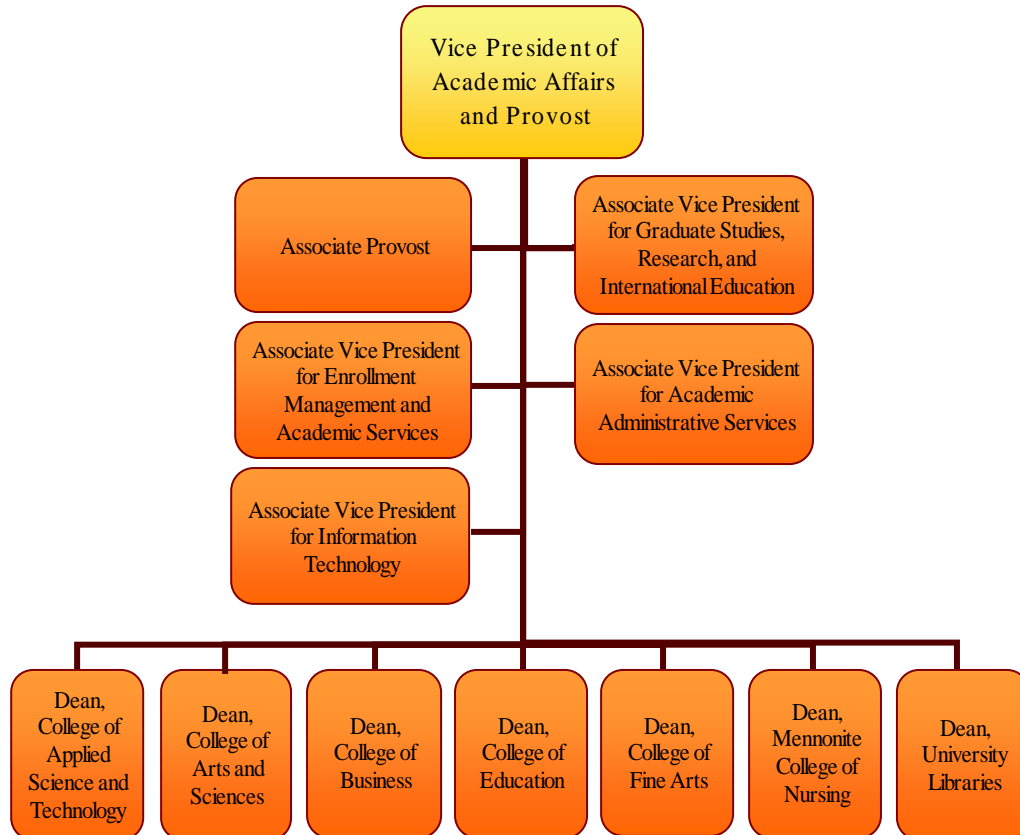
C. Al Bowman, is President of Illinois State University. Dr. Bowman joined Illinois State University in 1978 as a faculty member in Speech Pathology and Audiology. He was appointed Chairperson of Speech Pathology and Audiology in 1994 and served as Interim Provost during the 2002-2003 academic year. Bowman received a bachelor's degree in Speech Pathology from Augustana College in 1975. He earned a master's degree from Eastern Illinois University in 1976 and a Ph.D. in Speech and Hearing Science from the University of Illinois. Dr. Bowman is a member of the Chicago Education Alliance and the American Speech-Language-Hearing Association. He serves on the board of directors for Chestnut Health Systems, BroMenn Healthcare, and the McLean County Museum of History.



Vice President for Academic Affairs and Provost

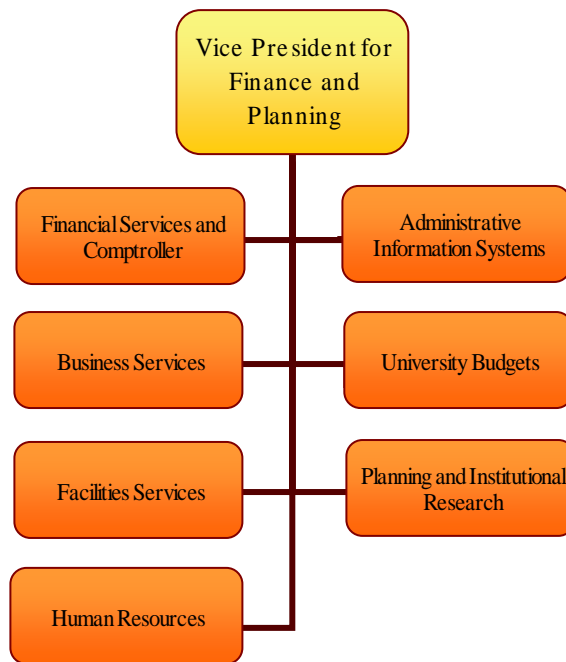
John W. Presley

John Woodrow Presley joined Illinois State as Vice President for Academic Affairs and Provost in March 2003. Previously he served as Provost and Vice President of Academic Affairs at the State University of New York-Oswego, Dean of the College of Arts, Science, and Letters at the University of Michigan-Dearborn, and Acting Provost and Dean of the Faculty at Lafayette College. He received his Ph.D. in modern British literature in 1975 and his master's degree in English language and literature in 1972 from Southern Illinois University, and his bachelor's degree in English from Arkansas State University in 1970.



Vice President for Finance and Planning
Stephen M. Bragg

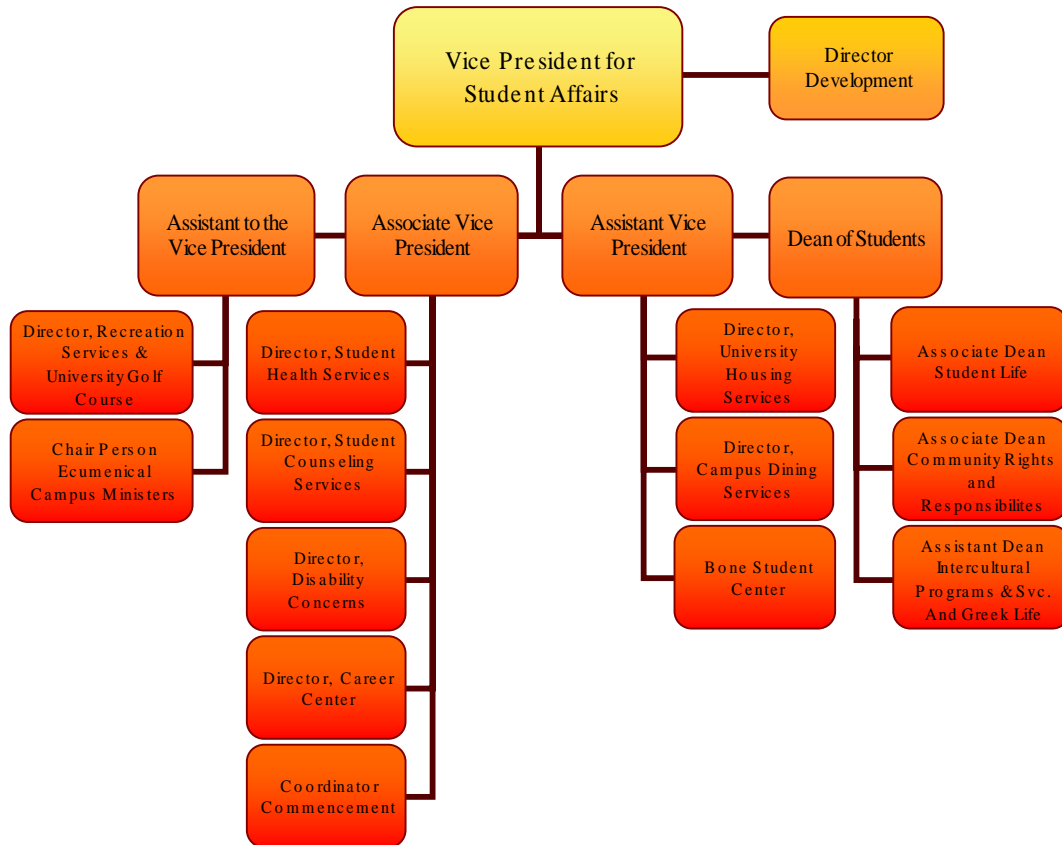
Stephen M. Bragg, Vice President for Finance and Planning, joined Illinois State University in 1994, serving first as Director of Planning, Policy Studies, and Information Systems, and later as Assistant Vice President for Budget and Planning. Prior to joining Illinois State University, Bragg held staff positions in fiscal affairs, academic affairs, and information systems at the Illinois Board of Higher Education (1981 - 1994). He also was Assistant Director of the Center for the Study of Higher Education at The Pennsylvania State University (1980 - 1981). He has a baccalaureate degree from the University of California at Berkeley and master's and doctorate degrees from The Pennsylvania State University.



Vice President for Student Affairs

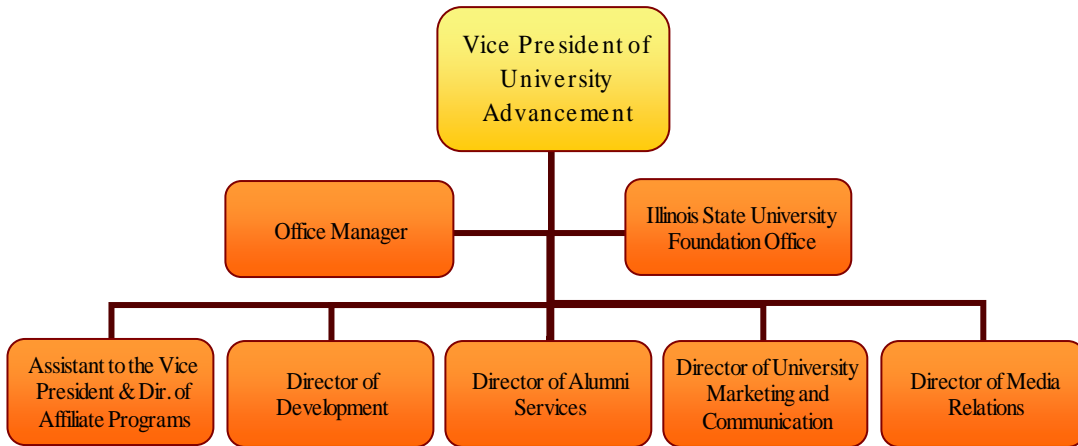
Helen L. Mamarchev

Helen L. Mamarchev became the vice president for Student Affairs on August 1, 2000. Prior to coming to Illinois State University, Dr. Mamarchev was the Associate Vice President for Student Affairs at the University of Florida where she was also an assistant professor in the Department of Counselor Education. She also served as the faculty advisor for the Panhellenic Council, advisor for Mortar Board and founder/advisor of the Women's Leadership Conference Committee. Dr. Mamarchev has authored or co-authored 23 publications, including a chapter in Managing the Political Dimension of Student Affairs. Dr. Mamarchev received her Ph.D. from the University of Michigan, her M.S. Ed. from Indiana University, and her B.A. from Southern Methodist University. Her name appears in Who's Who of American Women and Who's Who and Why of Successful Florida Women.



Vice President for University Advancement
Susan T. Kern

Susan T. Kern was appointed Vice President for University Advancement for Illinois State University effective July 1, 1998. Her responsibilities encompass the areas of Alumni Services, Development, Media Relations, Community Relations and University Marketing and Communications. She also serves as Executive Director of the Illinois State University Foundation. Kern received her Ph.D. from Purdue University in Housing, Equipment and Environmental Design before beginning her tenure at Illinois State in 1974 as a faculty member. She subsequently held positions in the Dean's office in the College of Applied Science and Technology and as the University's Executive Officer during which time she was responsible for a variety of divisions and programs ranging from Intercollegiate Athletics to the Wellness Program. Kern most recently served as Assistant to the President and Director of Community and Governmental Relations.



Academic College Deans, Department Chairs, and School Directors

Applied Science and Technology..... Dr. J. Robert Rossman

Agriculture Dr. Patrick D. O'Rourke
 School of Information Technology Dr. Terry L. Dennis
 Criminal Justice Sciences..... Dr. Thomas Ellsworth
 School of Kinesiology and Recreation Dr. Alan C. Lacy
 Health Sciences Dr. Marilyn J. Morrow
 Family and Consumer Sciences Dr. Connor M Walters
 Technology Dr. Rodney L. Custer
 Military Science LTC. Robert Felkel

Arts and Sciences..... Dr. Gary A. Olson

Biological Sciences Dr. Hou Tak Cheung
 Chemistry Dr. Frank C. Shaw
 Economics Dr. James Payne
 English Dr. Timothy Hunt
 Foreign Languages Dr. Kimberly A. Nance
 Geography-Geology Dr. David H. Malone
 History Dr. John B. Freed
 Communications Dr. Larry W. Long
 Mathematics Dr. George F. Seelinger
 Philosophy Dr. James K. Swindler
 Physics Dr. Richard F. Martin
 Politics and Government Dr. Jamal R. Nassar
 Psychology Dr. David P. Barone
 School of Social Work Dr. Barbara S. Heyl
 Sociology and Anthropology..... Dr. Nick G. Maroules
 Speech Pathology and Audiology Dr. Walter J. Smoski

Business..... Dr. Dixie Mills

Accounting Dr. James E. Moon
 Finance, Insurance, and Law Dr. Charles R. McGuire
 Management & Quantitative Methods Dr. John A. Lust
 Marketing Dr. Timothy A. Longfellow

Education..... Dr. Dianne E. Ashby

Curriculum and Instruction Dr. Albert T. Azinger
 Educational Administration & Foundations Dr. Patricia H. Klass
 Special Education..... Dr. James R. Thompson

Fine Arts Dr. Lonny J. Gordon

School of Art Dr. Ronald J. Mottram
 School of Music Dr. James E. Major
 School of Theatre Dr. Donald E. Lacasse Jr.

Mennonite College of Nursing..... Dr. Nancy Ridenour

Nursing Dr. Nancy Ridenour

University Libraries Cheryl Elzy

Endowed Chairs

Endowed chairs are a hallmark of a great university. The tradition of an endowed chair in education dates back to 1502 when the mother of Henry VII established the Lady Margaret Professorship of Divinity at Oxford. More than 200 years later the first endowed chair was established in America, the Hollis Professorship of Divinity created in 1721 at Harvard. Both chairs are still endowed to this day.

Endowed chairs offer many benefits to the donor, the honored scholar and to students. An endowed chair offers Illinois State University the opportunity to offer a more diverse curriculum that is not dependent on the usual income sources such as tuition and state funds. Endowed chairs also offer the means to attract, retain and to honor distinguished faculty.

The esteemed scholars who are chair holders receive recognition for personal achievements in their fields and the satisfaction that the University supports research and teaching in their discipline. Students are challenged and guided by exposure to the highest quality academic leadership.

Donors who have generously endowed chairs know that they are not only ensuring academic excellence in teaching and research today, but that theirs is truly a gift to the future of the University. Endowed chairs are living memorials, perpetuating the donor's name and signifying a permanent commitment to quality education.

Illinois State University has the following Endowed Chairs:

- Tom and Janet Andes Endowed Chair for General Education (2001), Dr. Kenton Machina
- K. Patricia Cross Endowed Chair in the Scholarship of Teaching and Learning (2001), Dr. Kathleen McKinney
- Kara Peters Endowed Chair in Special Education Assistive Technology (2002), Dr. Phil Parette
- Edmundson-Miller Endowed Chair of Insurance and Risk Management (2002), Dr. Richard MacMinn

University Calendar
2004-2005
2004 Fall Semester

August 16-22	Registration and program change
August 22	Last day to withdraw from classes with a full refund of tuition and fees
August 23	Classes Begin
August 25	Last day for late registration
August 25	Last day for program change
September 6.....	Labor Day Holiday
September 17.....	Last day for undergraduate students to apply and pay fee for graduation in December
October 15	Last day to withdraw or to remove credit/no-credit option from a full semester class
October 16.....	First-half of semester ends
October 19.....	Second-half of semester begins
November 20	Thanksgiving vacation begins at 5:30 p.m.
November 29	Classes resume
December 11.....	Last day of classes
December 13-17	Evaluation and review period
December 17.....	Fall semester ends
December 18.....	One hundred fiftieth Commencement
December 20.....	Grades due by 9 a.m.

2005 Spring Semester

January 10-18	Registration and program change
January 17	Last day to withdraw from classes with a full refund of tuition and fees
January 17	Martin Luther King Jr. Holiday
January 18	Classes begin
January 20	Last day for late registration and course changes
January 20	Last day for program change
February 11.....	Last day for undergraduate students to apply and pay fee for graduation in May
March 11	Last day to withdraw or to remove credit/no-credit option from a full semester class
March 12	First-half of semester ends. Spring vacation begins at noon
March 21	Classes resume
May 7.....	Last Day of Classes
May 9-13	Evaluation and review period
May 13.....	Spring semester ends
May 13-14	One Hundred fifty-first Commencement
May 17.....	Grades due by 9 a.m.

Undergraduate Programs Offered for 2004

		Baccalaureate						
<u>CIP</u>	<u>Program</u>	<u>B.A.</u>	<u>B.S.</u>	<u>B.S. Ed.</u>	<u>B.M. Ed.</u>	<u>B.S.W.</u>	<u>B.F.A.</u>	<u>B.M.</u>
01.0000	Agriculture		x					
01.0102	Agribusiness		x					
09.0102	Mass Communication	x	x					
09.0401	Journalism	x	x					
09.0902	Public Relations	x	x					
11.0103	Information Systems		x					
11.0701	Computer Science		x					
11.0901	Telecommunications Management		x					
13.1001	Special Education		x	x				
13.1202	Elementary Education		x	x				
13.1203	Middle Level Teacher Education		x	x				
13.1209	Early Childhood Education		x	x				
13.1303	Business Teacher Education	x	x	x				
13.1307	Health Education		x	x				
13.1309	Technology Education		x					
13.1312	Bachelor of Music Education				x			
13.1314	Physical Education	x	x	x				
13.1318	Social Sciences Education	x	x					
15.0612	Industrial Technology		x					
16.0501	German	x						
16.0901	French	x						
16.0905	Spanish	x						
19.0101	Family and Consumer Sciences	x	x					
23.0101	English	x						
09.0101	Communication Studies	x	x					
24.0101	Interdisciplinary Studies	x	x					
24.0102	University Studies	x	x					
26.0101	Biological Sciences		x					
26.0202	Biochemistry and Molecular Biology		x					
27.0101	Mathematics	x	x					
31.0301	Recreation and Park Administration		x					
31.0505	Exercise Science		x					
38.0101	Philosophy	x	x					
40.0501	Chemistry		x					
40.0601	Geology		x					
40.0801	Physics		x					
42.0101	Psychology	x	x					
43.0104	Criminal Justice Sciences	x	x					
44.0701	Bachelor of Social Work					x		
45.0201	Anthropology	x	x					
45.0601	Economics	x	x					
45.0701	Geography	x	x					
45.1001	Political Science	x	x					
45.1101	Sociology	x	x					
50.0501	Theatre	x	x					
50.0701	Art	x	x					
50.0702	B.F.A. in Art						x	
50.0901	Music (Liberal Arts)	x	x					
50.0903	Music Performance							x
50.9999	Arts Technology	x	x					
51.0204	Speech Pathology and Audiology		x					
51.0706	Health Information Management		x					
51.0913	Athletic Training		x					
51.1005	Clinical Laboratory Science		x					
51.1601	Nursing		x					
51.2202	Environmental Health		x					
51.2206	Safety		x					
52.0201	Business Administration		x					
52.0301	Accountancy		x					
52.0801	Finance		x					
52.1101	International Business	x	x					
52.1301	Management		x					
52.1401	Marketing		x					
52.1701	Insurance		x					
54.0101	History	x	x					

Graduate Programs Offered for 2004

		Masters Level									
<u>CIP</u>	<u>Program</u>	<u>M.A.</u>	<u>M.S.</u>	<u>M.S.Ed.</u>	<u>M.M.Ed.</u>	<u>M.S.W.</u>	<u>M.F.A.</u>	<u>M.M.</u>	<u>M.B.A.</u>	<u>M.P.A.</u>	
01.0102	Agribusiness		x								
09.0101	Communication	x	x								
11.0103	Information Systems		x								
13.0301	Curriculum and Instruction		x	x							
13.0401	Educational Administration		x	x							
13.0501	Instructional Technology and Design		x								
13.1001	Special Education		x	x							
13.1312	Master of Music Education					x					
13.1314	Kinesiology and Recreation		x								
13.1315	Reading			x							
15.0612	Technology		x								
16.0101	Foreign Languages	x									
19.0101	Family and Consumer Sciences	x	x								
23.0101	English	x	x								
23.0401	Writing	x	x								
26.0101	Biological Sciences		x								
27.0101	Mathematics	x	x								
40.0501	Chemistry		x								
40.0699	Hydrogeology		x								
42.0101	Psychology	x	x								
42.0601	Clinical-Counseling Psychology	x	x								
43.0104	Criminal Justice Sciences	x	x								
44.0701	Master of Social Work					x					
45.0301	Historical Archaeology	x	x								
45.0601	Applied Economics	x	x								
45.1001	Political Science	x	x								
45.1101	Sociology	x	x								
50.0501	Theatre	x	x								
50.0501	M.F.A. in Theatre						x				
50.0701	Art	x	x								
50.0702	M.F.A. in Art						x				
50.0901	Master of Music								x		
50.9999	Arts Technology		x								
51.0204	Speech Pathology and Audiology	x	x								
51.1605	Nursing		x								
51.2202	Environmental Health and Safety		x								
52.0201	Business Administration								x		
52.0301	Professional Accountancy										
52.0301	Accountancy		x							x	
54.0101	History	x	x								

IBHE Approved Certificate Level

<u>CIP</u>	<u>Program</u>	<u>P.B.</u>	<u>P.M.</u>	<u>S.S.P.</u>	<u>P.M.F.N.P.</u>
23.0401	Teaching of Writing High/Middle School	x			
13.0301	Alt. Route for Sec. Teacher Certification	x			
13.0409	Education Admin. & General Admin.		x		
13.0411	Education Admin. & Superintendent		x		
13.0499	Educ. Adm. & Chief School Bus. Official		x		
42.1701	School Psychology			x	
51.1605	Family Nurse Practitioner				x

Doctoral Level

<u>CIP</u>	<u>Program</u>	<u>Ed.D.</u>	<u>Ph.D.</u>
13.0301	Curriculum and Instruction	x	
13.0401	Educational Administration	x	x
13.1001	Special Education	x	
13.1311	Mathematics Education		x
23.0101	English Studies		x
26.0101	Biological Sciences		x
42.1701	School Psychology		x

Program Review Cycle

Baccalaureate		
<u>CIP</u>	<u>Program</u>	<u>Year</u>
52.0301	Accountancy	2004
01.0102	Agribusiness	2004
01.0000	Agriculture	2004
19.0101	Family and Consumer Sciences	2004
52.0801	Finance	2004
15.0612	Industrial Technology	2004
52.1701	Insurance	2004
24.0101	Interdisciplinary Studies	2004
52.1101	International Business	2004
52.1301	Management	2004
52.1401	Marketing	2004
38.0101	Philosophy	2004
42.0101	Psychology	2004
13.1309	Technology Education	2004
24.0102	University Studies	2004
52.0201	Business Administration	2005
11.0701	Computer Science	2005
16.0901	French	2005
16.0501	German	2005
11.0103	Information Systems	2005
16.0905	Spanish	2005
11.0901	Telecommunications Management	2005
45.0201	Anthropology	2006
44.0701	Bachelor of Social Work	2006
43.0104	Criminal Justice Sciences	2006
45.0601	Economics	2006
45.0701	Geography	2006
54.0101	History	2006
45.1001	Political Science	2006
13.1318	Social Sciences Education	2006
45.1101	Sociology	2006
50.0701	Art	2007
50.9999	Arts Technology	2007
50.0702	B.F.A. in Art	2007
09.0401	Journalism	2007
09.0102	Mass Communication	2007
50.0903	Music	2007
50.0901	Music (Liberal Arts)	2007
09.0902	Public Relations	2007
31.0301	Recreation and Park Administration	2007
50.0501	Theatre	2007
40.0501	Chemistry	2008
40.0601	Geology	2008
40.0801	Physics	2008
26.0202	Biochemistry and Molecular Biology	2009
26.0101	Biological Sciences	2009
51.2202	Environmental Health	2009
51.0706	Health Information Management	2009
51.1601	Nursing	2009
51.0204	Speech Pathology and Audiology	2009
51.1005	Clinical Laboratory Science	2010
23.1001	Communication Studies	2010
23.0101	English	2010
27.0101	Mathematics	2010
51.2206	Safety	2010
51.0913	Athletic Training	2011
13.1303	Business Teacher Education	2011
13.1209	Early Childhood Education	2011
13.1202	Elementary Education	2011
31.0505	Exercise Science	2011
13.1307	Health Education	2011
13.1203	Middle Level Teacher Education	2011
13.1312	Music Education	2011
13.1314	Physical Education	2011
13.1001	Special Education	2011

Masters Level		
<u>CIP</u>	<u>Program</u>	<u>Year</u>
52.0301	Accountancy	2004
01.0102	Agribusiness	2004
52.0201	Business Administration	2004
42.0601	Clinical-Counseling Psychology	2004
19.0101	Family and Consumer Sciences	2004
52.0301	Professional Accountancy	2004
42.0101	Psychology	2004
15.0501	Technology	2004
16.0101	Foreign Languages	2005
11.0103	Information Systems	2005
45.0601	Applied Economics	2006
43.0104	Criminal Justice Sciences	2006
45.0301	Historical Archaeology	2006
54.0101	History	2006
44.0701	Master of Social Work	2006
45.1001	Political Science	2006
45.1101	Sociology	2006
50.0701	Art	2007
50.9999	Arts Technology	2007
09.0101	Communication	2007
50.0702	M.F.A. in Art	2007
50.0501	M.F.A. in Theatre	2007
50.0901	Master of Music	2007
50.0501	Theatre	2007
40.0501	Chemistry	2008
40.0699	Hydrogeology	2008
26.0101	Biological Sciences	2009
51.2202	Environmental Health and Safety	2009
51.1605	Nursing	2009
51.0204	Speech Pathology and Audiology	2009
23.0101	English	2010
27.0101	Mathematics	2010
23.0401	Writing	2010
13.0301	Curriculum and Instruction	2011
13.0401	Educational Administration	2011
13.0501	Instructional Technology and Design	2011
13.1314	Kinesiology and Recreation	2011
13.1312	Music	2011
13.1315	Reading	2011
13.1001	Special Education	2011

IBHE Approved Certificate Level		
<u>CIP</u>	<u>Program</u>	<u>Year</u>
42.1701	School Psychology	2004
51.1605	Family Nurse Practitioner	2009
23.0401	Teaching of Writing High/Middle School	2010
13.0301	Alternative Route to Secondary Teacher Cert.	2011
13.0499	Educ. Adm. & Chief School Bus. Officials	2011
13.0409	Education Admin. & General Admin.	2011
13.0411	Education Admin. & Superintendent	2011

Doctoral Level		
<u>CIP</u>	<u>Program</u>	<u>Year</u>
42.1701	School Psychology	2004
26.0101	Biological Sciences	2009
23.0101	English Studies	2010
13.0301	Curriculum and Instruction	2011
13.0401	Educational Administration	2011
13.1311	Mathematics Education	2011
13.1001	Special Education	2011



*Student
Information*

Student Section Overview

Educating Illinois, the University’s strategic plan, places a high priority on recruiting high-achieving, motivated students. Illinois State University seeks to become the first choice public university in Illinois for top students who desire an individualized educational experience combined with the resources of a large public university.

Under *Educating Illinois*, goals have been set to make Illinois State University: The University of Choice for Students, Faculty, Staff, and Illinois Citizens; The National Leader Known for Excellence in Undergraduate and Graduate Education; and The Educational Environment that Fosters Creativity and Growth Among Its Students, Faculty, and Staff. Performance indicators from the goals include the following:

<u>Performance Indicator</u>	Fall <u>2003</u>	Fall <u>2004</u>	<u>Goal</u>	<u>Status</u> ¹
Ratio of Acceptances to Applications	75%	75%	63%	N
Ratio of Enrollments to Acceptances	41%	37%	44%	O
ACT Interquartile Range	21-26	22-26	22-27	M
Freshmen from Top 10% of High School Class	11%	10%	23%	O
Mean GPA’s of New Master’s Students	3.44	3.51	3.50	A
Mean GPA’s of New Doctoral Students	3.69	3.73	3.65	A

Educating Illinois recognizes that demand placed on a system affects learning capacity. The University Enrollment Committee works with the President and Vice Presidents to define the optimal number of new first-time freshmen, transfer, and graduate students and the appropriate number of total undergraduate and graduate students to enroll at the university. Collaborative efforts between the Enrollment Management and Academic Services (EMAS) office and academic departments/schools make implementation successful.

	<u>Goal</u>	<u>Actual</u>	Percent <u>Above/Below</u>
New Freshmen	3,000	2,834	5.5% Below
New Transfer	1,800	1,847	2.6% Above
New Graduate	600	641	6.8% Above
Total Undergraduate	17,585	17,866	1.6% Above
Total Graduate	2,354	2,553	8.5% Above

Through *Educating Illinois* and the actions of university faculty and staff, Illinois State retention and graduation rates continue to increase and are at historic peaks.

	Fall <u>2003</u>	Fall <u>2004</u>	<u>Goal</u>	<u>Status</u> ¹
Freshmen Retention	83%	84%	88%	M
Six Year Graduation Rate	60%	62%	67%	M
Masters Degrees Conferred & Certificates Awarded	730	659	750	O
Doctoral Degrees Conferred	55	43	60	O

Completed Applications, Acceptances, and Enrollments¹ for
 New Beginning Students, New Undergraduate Transfer, and New Graduate Students
 Fall 2000 through Fall 2004

	Fall <u>2000</u>	Fall <u>2001</u>	Fall <u>2002</u>	Fall <u>2003</u>	Fall <u>2004</u>
<u>New Beginning Students</u>					
Completed Applications	11,574	10,211	9,070	10,075	10,219
Acceptances For Regular Admission	8,755	7,905	7,382	7,570	7,654
Enrollments	3,265	3,340	3,108	3,097	2,834
Ratio of Accepted to Applied (Yield Rate)	.76	.77	.81	.75	.75
Ratio of Enrolled to Applied	.28	.33	.34	.31	.28
Ratio of Enrolled to Accepted (Show Rate)	.37	.42	.42	.41	.37
<u>New Undergraduate Transfers</u> ²					
Completed Applications	3,545	3,600	3,340	3,473	3,622
Acceptances For Regular Admission	3,090	3,154	2,990	3,026	3,057
Enrollments	1,841	1,989	1,856	1,772	1,847
Ratio of Accepted to Applied	.87	.88	.90	.87	.84
Ratio of Enrolled to Applied	.52	.55	.56	.51	.51
Ratio of Enrolled to Accepted	.60	.63	.62	.59	.60
<i>Educating Illinois 2003-2010</i> has a goal of increasing the the prestige of being accepted into an Illinois State University undergraduate degree program by decreasing the freshmen yield rate (ratio of accepted to applied) from 75% to 63%, and increasing the freshmen show rate (ratio of enrolled to accepted) from 41% to 44%.					
<i>Educating Illinois 2003-2010</i> has a goal of increasing the mean grade point average of transfer students from 3.01 to 3.10. The fall 2004 grade point average is 3.06.					
<u>New Graduate Students</u>					
Completed Applications	1,350	1,383	1,555	1,613	1,588
Acceptances For Regular Admission	1,055	992	1,137	1,105	1,033
Enrollments	650	620	636	623	641
Ratio of Accepted to Applied	.78	.72	.73	.69	.65
Ratio of Enrolled to Applied	.48	.45	.41	.39	.40
Ratio of Enrolled to Accepted	.62	.63	.56	.56	.62
<u>Total</u>					
Completed Applications	16,469	15,194	13,965	15,161	15,429
Acceptances For Regular Admission	12,900	12,051	11,509	11,701	11,744
Enrollments	5,756	5,949	5,600	5,492	5,322
Ratio of Accepted to Applied	.78	.79	.82	.77	.76
Ratio of Enrolled to Applied	.35	.39	.40	.36	.34
Ratio of Enrolled to Accepted	.45	.49	.49	.47	.45

Educating Illinois 2003-2010 has a goal of enrolling new degree-seeking master's students with a mean grade point average of 3.50. The fall 2004 value is 3.51. For doctoral students the goal is 3.65. The 2004 value is 3.73.

¹ Excludes unclassified students.

² Freshmen transfers are counted as transfers.

Undergraduate Completed Applications, Acceptances, and Enrollments
by Racial/Ethnic Designation
Fall 2000 through Fall 2004

	New Beginning Students (excludes unclassified)				
	2000	2001	2002	2003	2004
<u>Completed Applications</u>					
American Indian/Alaskan Native	38	20	25	40	44
Black/Non-Hispanic	1,339	988	699	819	956
Asian/Pacific Islander	342	277	195	252	330
Hispanic	454	404	331	399	414
White/Non-Hispanic	9,039	8,221	7,573	8,215	7,886
Not Reported	291	238	187	290	526
Non-Resident Alien	71	63	60	60	63
Total	11,574	10,211	9,070	10,075	10,219
<u>Acceptances</u>					
American Indian/Alaskan Native	31	19	17	35	33
Black/Non-Hispanic	671	600	466	598	583
Asian/Pacific Islander	254	200	138	183	236
Hispanic	301	305	261	351	329
White/Non-Hispanic	7,266	6,583	6,312	6,198	6,040
Not Reported	184	150	138	170	377
Non-Resident Alien	48	48	50	35	56
Total	8,755	7,905	7,382	7,570	7,654
<u>Enrollments</u>					
American Indian/Alaskan Native	10	6	5	11	13
Black/Non-Hispanic	210	217	175	248	219
Asian/Pacific Islander	63	52	40	52	55
Hispanic	66	96	97	126	97
White/Non-Hispanic	2,899	2,951	2,770	2,645	2,297
Not Reported	--	--	--	--	134
Non-Resident Alien	17	18	21	15	19
Total	3,265	3,340	3,108	3,097	2,834
<u>New Undergraduate Transfer Students (excludes unclassified)</u>					
	2000	2001	2002	2003	2004
<u>Completed Applications</u>					
American Indian/Alaskan Native	5	13	13	11	9
Black/Non-Hispanic	191	184	142	148	194
Asian/Pacific Islander	76	46	38	43	84
Hispanic	75	111	107	118	101
White/Non-Hispanic	3,090	3,136	2,928	3,000	2,928
Not Reported	64	72	73	102	257
Non-Resident Alien	44	38	39	51	49
Total	3,545	3,600	3,340	3,473	3,622
<u>Acceptances</u>					
American Indian/Alaskan Native	4	11	8	9	8
Black/Non-Hispanic	147	139	112	106	156
Asian/Pacific Islander	69	36	29	36	61
Hispanic	65	92	91	95	88
White/Non-Hispanic	2,725	2,788	2,663	2,660	2,475
Not Reported	42	58	54	77	229
Non-Resident Alien	38	30	33	43	40
Total	3,090	3,154	2,990	3,026	3,057
<u>Enrollments</u>					
American Indian/Alaskan Native	2	4	2	4	4
Black/Non-Hispanic	81	80	71	65	99
Asian/Pacific Islander	30	15	15	18	35
Hispanic	33	54	46	50	52
White/Non-Hispanic	1,681	1,816	1,699	1,616	1,508
Not Reported	--	--	--	--	131
Non-Resident Alien	14	20	23	19	18
Total	1,841	1,989	1,856	1,772	1,847

American College Testing (ACT) Mean Scores
Fall 2000 through Fall 2004

Illinois State University - New Beginning Freshmen

<u>Subject Tests and Composite</u>	<u>English</u>	<u>Math</u>	<u>Reading</u>	<u>Science</u>	<u>Composite</u>
2000-2001	22.3	22.5	22.9	22.4	22.7
2001-2002	22.4	22.5	23.2	22.7	22.8
2002-2003	23.1	23.0	23.9	22.8	23.3
2003-2004	23.4	23.1	23.9	23.2	23.6
2004-2005	23.7	23.5	24.5	23.1	23.9
	2000- <u>2001</u>	2001- <u>2002</u>	2002- <u>2003</u>	2003- <u>2004</u>	2004- <u>2005</u>
<u>Composite Scores By College</u>					
Applied Science & Technology	22.7	22.9	23.3	23.6	23.5
Arts & Sciences	23.6	23.9	24.3	24.6	24.9
Business	22.6	22.6	23.3	23.7	23.7
Education	22.3	22.4	23.0	23.8	23.8
Fine Arts	23.0	23.9	24.2	24.3	24.9
Mennonite College of Nursing	21.5	22.0	22.4	22.7	24.0
Other Majors ¹	22.1	22.0	22.4	22.1	22.5
Total	22.7	22.8	23.3	23.6	23.9

All High School Students who took the ACT Test

<u>National</u>	<u>Number</u>	<u>English</u>	<u>Math</u>	<u>Reading</u>	<u>Science</u>	<u>Composite</u>
2000-2001	1,065,138	20.5	20.7	21.4	21.0	21.0
2001-2002	1,069,772	20.5	20.7	21.3	21.0	21.0
2002-2003 ²	1,116,082	20.2	20.6	21.1	20.8	20.8
2003-2004	1,175,059	20.3	20.6	21.2	20.8	20.8
2004-2005	1,171,460	20.4	20.7	21.3	20.9	20.9
<u>State of Illinois</u>						
2000-2001	90,450	20.9	21.5	21.7	21.4	21.5
2001-2002	89,311	21.1	21.4	21.8	21.6	21.6
2002-2003 ²	128,753	19.4	20.2	20.3	20.0	20.1
2003-2004	134,505	19.6	20.2	20.4	20.1	20.2
2004-2005	133,000	19.7	20.2	20.5	20.2	20.3

¹ Includes General Student and General Studies; Excludes Unclassified Students.

² Beginning with 2001, Illinois and Colorado required all high school juniors to take the ACT test.

Core course (4 years English; 3 years each Math, Social Sciences, Natural Sciences) students in Illinois averaged a composite score of 22.4 while nationally core curriculum student's composite score was 21.9.

New Beginning Freshmen Census Day Enrollment
by ACT Score and High School Percentile Rank
Fall 2003 and 2004

Fall 2003 Enrollment						
High School Percentile Rank						
<u>ACT Score</u>	<u>99-75</u>	<u>74-50</u>	<u>49-25</u>	<u>24-1</u>	<u>NR</u>	<u>Total</u>
NR	3	9	8	--	22	42
1-15	4	5	--	--	1	10
16-17	29	30	14	1	2	76
18-19	43	66	32	3	3	147
20-22	265	479	123	7	28	902
23-25	437	498	174	7	29	1,145
26-29	379	199	59	7	14	658
30-36	82	21	6	1	7	117
Total	1,242	1,307	416	26	106	3,097

Fall 2004 Enrollment						
High School Percentile Rank						
<u>ACT Score</u>	<u>99-75</u>	<u>74-50</u>	<u>49-25</u>	<u>24-1</u>	<u>NR</u>	<u>Total</u>
NR	3	11	3	1	16	34
1-15	1	--	2	1	--	4
16-17	20	15	7	2	2	46
18-19	38	49	16	5	3	111
20-22	224	393	114	3	21	755
23-25	413	495	172	9	39	1,128
26-29	311	231	77	10	20	649
30-36	68	27	6	--	6	107
Total	1,078	1,221	397	31	107	2,834

Difference Fall 2004 to Fall 2003						
High School Percentile Rank						
<u>ACT Score</u>	<u>99-75</u>	<u>74-50</u>	<u>49-25</u>	<u>24-1</u>	<u>NR</u>	<u>Total</u>
NR	--	2	(5)	1	(6)	(8)
1-15	(3)	(5)	2	1	(1)	(6)
16-17	(9)	(15)	(7)	1	--	(30)
18-19	(5)	(17)	(16)	2	--	(36)
20-22	(41)	(86)	(9)	(4)	(7)	(147)
23-25	(24)	(3)	(2)	2	10	(17)
26-29	(68)	32	18	3	6	(9)
30-36	(14)	6	--	(1)	(1)	(10)
Total	(164)	(86)	(19)	5	1	(263)

American College Testing (ACT) Score Distribution
 Fall 2004 New Beginning Freshmen at Illinois State University

<u>Score</u>	<u>English</u>	<u>Math</u>	<u>Reading</u>	<u>Reasoning</u>	<u>Composite</u>	<u>Cumulative Percent Composite</u>
11	3	--	2	--	--	--
12	--	1	4	--	--	--
13	3	1	12	1	--	--
14	5	10	10	10	1	0.0
15	19	27	26	10	3	0.1
16	42	53	41	14	15	0.7
17	56	102	56	39	31	1.8
18	83	114	64	76	44	3.4
19	123	191	141	183	67	5.8
20	209	174	179	246	178	12.1
21	312	190	185	243	210	19.6
22	275	243	194	443	367	32.7
23	223	219	270	362	412	47.4
24	289	337	279	299	389	61.3
25	319	295	172	290	327	73.0
26	235	248	274	180	246	81.8
27	152	217	145	171	189	88.5
28	112	132	255	89	134	93.3
29	129	92	113	57	80	96.2
30	80	49	112	32	47	97.9
31	43	42	60	9	31	99.0
32	33	27	76	20	19	99.6
33	25	15	71	10	7	99.9
34	21	14	32	5	3	100.0
35	8	6	9	9	--	100.0
36	1	1	18	2	--	100.0
Missing Scores	34	34	34	34	34	
New Freshmen	2,834	2,834	2,834	2,834	2,834	
Average Score	23.7	23.5	24.5	23.1	23.9	

Educating Illinois 2003-2010 has a goal to achieve an ACT interquartile range of 22-27. The fall 2004 value is 22-26, compared to a value of 21-26 in fall 2003.

New Students by Class and Type of Admission
 Fall 2002 through Fall 2004

	New Beginning <u>Students</u>	4 Yr College <u>Transfer</u>	Community College <u>Transfer</u>	Other College <u>Graduates</u>	ISU College <u>Graduates</u>	<u>Total</u>
<u>Fall 2002</u>						
Freshman	3,106	73	137	--	--	3,316
Sophomore	2	130	511	--	--	643
Junior	--	79	852	--	--	931
Senior	--	19	23	31	1	74
Unclassified	26	13	13	--	--	52
Undergraduate Total	3,134	314	1,536	31	1	5,016
Masters	--	--	--	370	217	587
Certificate	--	--	--	8	--	8
Doctoral	--	--	--	29	12	41
Graduate Total	--	--	--	407	229	636
Total	3,134	314	1,536	438	230	5,652
<hr/>						
<u>Fall 2003</u>						
Freshman	3,086	67	127	--	--	3,280
Sophomore	10	156	498	--	--	664
Junior	1	116	732	--	--	849
Senior	--	21	14	41	--	76
Unclassified	23	6	8	--	--	37
Undergraduate Total	3,120	366	1,379	41	--	4,906
Masters	--	--	--	380	187	567
Certificate	--	--	--	7	4	11
Doctoral	--	--	--	33	12	45
Graduate Total	--	--	--	420	203	623
Total	3,120	366	1,379	461	203	5,529
<hr/>						
<u>Fall 2004</u>						
Freshman	2,820	85	108	--	--	3,013
Sophomore	14	196	478	--	--	688
Junior	--	106	800	--	--	906
Senior	--	23	15	36	--	74
Unclassified	23	17	13	--	--	53
Undergraduate Total	2,857	427	1,414	36	--	4,734
Masters	--	--	--	350	235	585
Certificate	--	--	--	6	4	10
Doctoral	--	--	--	33	13	46
Graduate Total	--	--	--	389	252	641
Total	2,857	427	1,414	425	252	5,375

Headcount and Full-Time Equivalence (FTE)¹ Enrollment
On- and Off-Campus by Class/Level
Fall 2000 through Fall 2004

	On-Campus					Off-Campus					Total				
	2000	2001	2002	2003	2004	2000	2001	2002	2003	2004	2000	2001	2002	2003	2004
Freshman															
Headcount	4,636	4,821	4,563	4,297	3,937	--	--	--	--	--	4,636	4,821	4,563	4,297	3,937
FTE	4,379	4,552	4,320	4,105	3,807	--	--	--	--	--	4,379	4,552	4,320	4,105	3,807
Sophomore															
Headcount	3,285	3,415	3,504	3,466	3,515	--	--	--	--	--	3,285	3,415	3,504	3,466	3,515
FTE	3,087	3,223	3,328	3,304	3,390	--	--	--	--	--	3,087	3,223	3,328	3,304	3,390
Junior															
Headcount	4,456	4,574	4,726	4,726	4,704	--	--	--	--	6	4,456	4,574	4,726	4,726	4,710
FTE	4,020	4,147	4,324	4,346	4,341	--	--	--	--	2	4,020	4,147	4,324	4,346	4,343
Senior															
Headcount	5,582	5,583	5,482	5,546	5,639	--	--	1	--	5	5,582	5,583	5,483	5,546	5,644
FTE	4,780	4,823	4,756	4,810	4,902	--	--	1	--	2	4,780	4,823	4,757	4,810	4,904
Unclassified															
Headcount	59	79	77	62	71	7	--	--	--	1	66	79	77	62	72
FTE	30	34	37	28	31	1	--	--	--	--	31	34	37	28	31
<u>Undergraduate Total</u>															
Headcount	18,018	18,472	18,352	18,097	17,866	7	--	1	--	12	18,025	18,472	18,353	18,097	17,878
FTE	16,296	16,779	16,765	16,593	16,471	1	--	1	--	4	16,297	16,779	16,766	16,593	16,475
Masters															
Headcount	2,166	2,214	2,256	2,218	2,151	162	113	132	92	259	2,328	2,327	2,388	2,310	2,410
FTE	1,579	1,553	1,606	1,640	1,611	57	45	50	46	79	1,636	1,598	1,656	1,686	1,690
Certificate															
Headcount	22	21	23	31	36	--	--	--	1	2	22	21	23	32	38
FTE	23	23	23	23	32	--	--	--	1	1	23	23	23	24	33
Doctoral															
Headcount	298	328	344	359	366	82	92	75	62	65	380	420	419	421	431
FTE	177	216	230	230	236	42	56	32	37	31	219	272	262	268	267
<u>Graduate Total</u>															
Headcount	2,486	2,563	2,623	2,608	2,553	244	205	207	155	326	2,730	2,768	2,830	2,763	2,879
FTE	1,779	1,792	1,859	1,893	1,879	99	101	82	84	111	1,878	1,893	1,941	1,977	1,990
<u>Total Enrollment</u>															
Headcount	20,504	21,035	20,975	20,705	20,419	251	205	208	155	338	20,755	21,240	21,183	20,860	20,757
FTE	18,075	18,571	18,624	18,486	18,350	100	101	83	84	115	18,175	18,672	18,707	18,570	18,465

¹ Undergraduate FTE calculated as Credit Hours divided by 15. Graduate FTE calculated as Credit Hours divided by 9.

Educating Illinois 2003-2010 contains goals to define and achieve undergraduate and graduate enrollments consistent with University targets. The table below compares the university's actual enrollment with goals identified in the University's Resource All

	<u>Actual</u>	<u>Goal</u>	<u>Percent Above Goal</u>
Undergraduate	17,866	17,585	1.6%
Graduate	2,553	2,354	7.8%

Undergraduate and Graduate Headcount Enrollment
by College
Fall 2000 through Fall 2004

	Undergraduate				
	<u>2000</u>	<u>2001</u>	<u>2002</u>	<u>2003</u>	<u>2004</u>
Applied Science and Technology	3,526	3,527	3,467	3,403	3,302
Arts and Sciences	4,653	4,621	4,841	5,053	4,976
Business	3,034	3,255	3,254	3,055	2,934
Education	2,739	2,896	2,805	2,531	2,492
Fine Arts	1,045	1,005	943	987	1,006
Mennonite College of Nursing	380	438	461	522	552
Other ¹	30	14	14	14	27
Non-Degree Seeking Students ²	2,611	2,716	2,567	2,532	2,577
Total	18,018	18,472	18,352	18,097	17,866

	Graduate				
	<u>2000</u>	<u>2001</u>	<u>2002</u>	<u>2003</u>	<u>2004</u>
Applied Science and Technology	322	365	365	343	309
Arts and Sciences	854	832	893	924	909
Business	203	206	215	230	224
Education	585	597	582	580	595
Fine Arts	140	143	135	137	150
Mennonite College of Nursing	35	28	25	23	29
Non-Degree Seeking Students ²	347	392	408	371	337
Total	2,486	2,563	2,623	2,608	2,553

	Total				
	<u>2000</u>	<u>2001</u>	<u>2002</u>	<u>2003</u>	<u>2004</u>
Applied Science and Technology	3,848	3,892	3,832	3,746	3,611
Arts and Sciences	5,507	5,453	5,734	5,977	5,885
Business	3,237	3,461	3,469	3,285	3,158
Education	3,324	3,493	3,387	3,111	3,087
Fine Arts	1,185	1,148	1,078	1,124	1,156
Mennonite College of Nursing	415	466	486	545	581
Other ¹	30	14	14	14	27
Non-Degree Seeking Students ²	2,958	3,108	2,975	2,903	2,914
Total	20,504	21,035	20,975	20,705	20,419

¹ Other includes Interdisciplinary Studies and University Studies.

² Non-Degree Seeking Students: Undergraduate - General Student, General Studies, and Unclassified; Graduate - Students-at-Large and Certificate students.

Undergraduate and Graduate Headcount Enrollment
by Racial/Ethnic Designation
Fall 2000 through Fall 2004

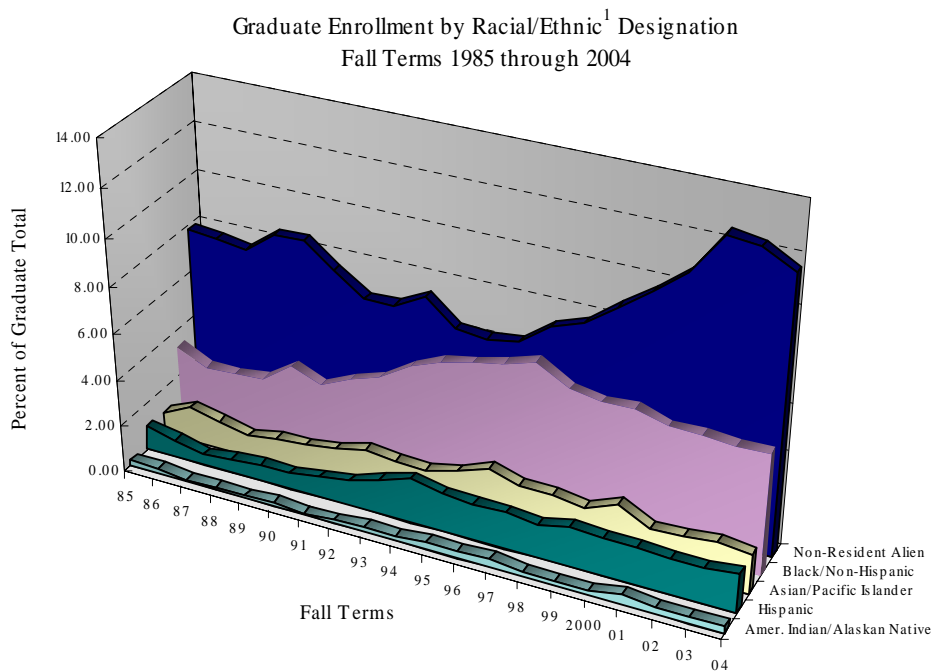
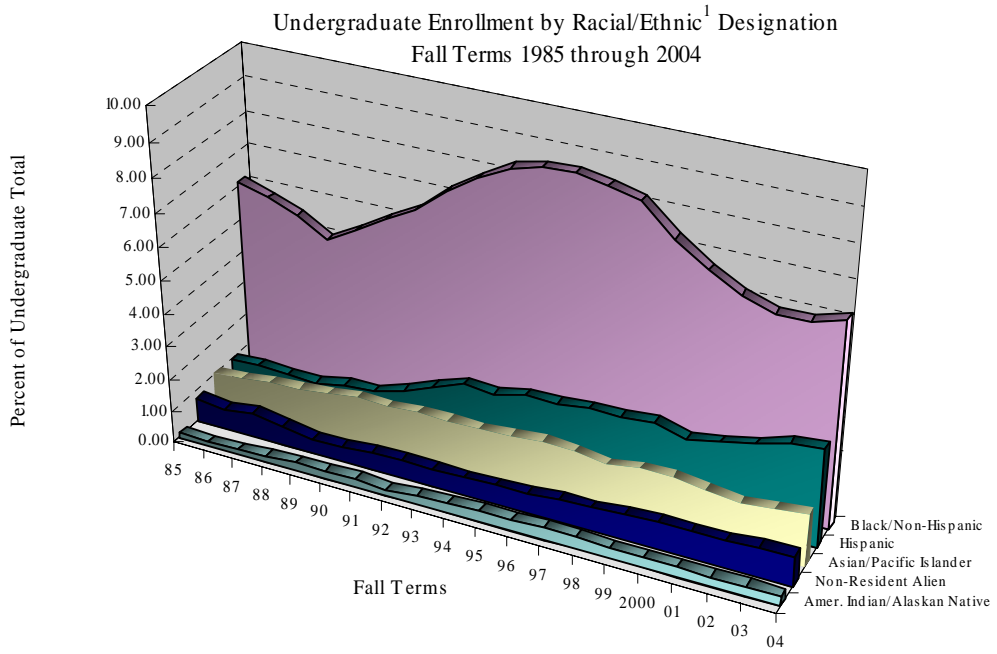
	Undergraduate									
	2000		2001		2002		2003		2004	
	Number	Pct	Number	Pct	Number	Pct	Number	Pct	Number	Pct
Amer. Indian/Alaskan Native	46	.3	53	.3	47	.3	48	.3	51	.3
Black/Non-Hispanic	1,207	6.7	1,149	6.2	1,083	5.9	1,061	5.9	1,110	6.2
Asian/Pacific Islander	285	1.6	286	1.5	259	1.4	272	1.5	294	1.6
Hispanic	399	2.2	448	2.4	468	2.6	520	2.9	528	3.0
Minority Subtotal	1,937	10.8	1,936	10.5	1,857	10.1	1,901	10.5	1,983	11.1
White/Non-Hispanic	15,945	88.5	16,392	88.7	16,344	89.1	16,038	88.6	15,402	86.2
Not Reported	--	.0	--	.0	--	.0	--	.0	326	1.8
Non-Resident Alien	136	.8	144	.8	151	.8	158	.9	155	.9
Total	18,018	100.0	18,472	100.0	18,352	100.0	18,097	100.0	17,866	100.0

	Graduate									
	2000		2001		2002		2003		2004	
	Number	Pct	Number	Pct	Number	Pct	Number	Pct	Number	Pct
Amer. Indian/Alaskan Native	5	.2	10	.4	8	.3	8	.3	8	.3
Black/Non-Hispanic	139	5.6	134	5.2	136	5.2	132	5.1	131	5.1
Asian/Pacific Islander	57	2.3	40	1.6	45	1.7	46	1.8	44	1.7
Hispanic	40	1.6	40	1.6	39	1.5	38	1.5	43	1.7
Minority Subtotal	241	9.7	224	8.7	228	8.7	224	8.6	226	8.9
White/Non-Hispanic	2,003	80.6	2,065	80.6	2,067	78.8	2,064	79.1	2,001	78.4
Not Reported	--	.0	--	.0	--	.0	--	.0	31	1.2
Non-Resident Alien	242	9.7	274	10.7	328	12.5	320	12.3	295	11.6
Total	2,486	100.0	2,563	100.0	2,623	100.0	2,608	100.0	2,553	100.0

	Total									
	2000		2001		2002		2003		2004	
	Number	Pct	Number	Pct	Number	Pct	Number	Pct	Number	Pct
Amer. Indian/Alaskan Native	51	.2	63	.3	55	.3	56	.3	59	.3
Black/Non-Hispanic	1,346	6.6	1,283	6.1	1,219	5.8	1,193	5.8	1,241	6.1
Asian/Pacific Islander	342	1.7	326	1.5	304	1.4	318	1.5	338	1.7
Hispanic	439	2.1	488	2.3	507	2.4	558	2.7	571	2.8
Minority Subtotal	2,178	10.6	2,160	10.3	2,085	9.9	2,125	10.3	2,209	10.8
White/Non-Hispanic	17,948	87.5	18,457	87.7	18,411	87.8	18,102	87.4	17,403	85.2
Not Reported	--	.0	--	.0	--	.0	--	.0	357	1.7
Non-Resident Alien	378	1.8	418	2.0	479	2.3	478	2.3	450	2.2
Total	20,504	100.0	21,035	100.0	20,975	100.0	20,705	100.0	20,419	100.0

Educating Illinois 2003-2010 contains goals to increase minority student enrollment. Excluding Non-resident Aliens, minority undergraduate enrollment is 11.1 percent of undergraduate enrollment. This is up from 10.5 percent in Fall 2003.

Educating Illinois 2003-2010 contains goals to increase minority student enrollment. Excluding Non-resident Aliens, minority graduate enrollment is 8.9 percent of graduate enrollment. This is up from 8.6 percent in Fall 2003.



¹ White Non-Hispanic Ethnic Group not displayed

Enrollment by Age (as of September 1st) and Gender
Fall 2004

	Undergraduate Students								
	With 12 Hours or More			With Less than 12 Hours			Total		
	Men	Women	Total	Men	Women	Total	Men	Women	Total
Under 18	19	65	84	6	11	17	25	76	101
18	969	1,682	2,651	5	8	13	974	1,690	2,664
19	1,094	1,792	2,886	15	10	25	1,109	1,802	2,911
20	1,345	2,079	3,424	35	30	65	1,380	2,109	3,489
21	1,513	2,249	3,762	66	86	152	1,579	2,335	3,914
22	1,068	911	1,979	114	97	211	1,182	1,008	2,190
23	398	261	659	80	48	128	478	309	787
24	187	110	297	54	42	96	241	152	393
25	125	79	204	28	34	62	153	113	266
26	79	52	131	25	22	47	104	74	178
27	65	51	116	13	26	39	78	77	155
28	42	32	74	17	16	33	59	48	107
29	33	23	56	11	16	27	44	39	83
30-34	67	73	140	48	69	117	115	142	257
35-39	28	36	64	24	46	70	52	82	134
40-44	15	30	45	12	33	45	27	63	90
45-49	10	20	30	21	42	63	31	62	93
50-54	5	6	11	8	21	29	13	27	40
55-59	--	1	1	4	3	7	4	4	8
60-64	--	--	--	1	1	2	1	1	2
65 & Over	--	--	--	2	2	4	2	2	4
Total	7,062	9,552	16,614	589	663	1,252	7,651	10,215	17,866

	Graduate Students								
	With 9 Hours or More			With Less than 9 Hours			Total		
	Men	Women	Total	Men	Women	Total	Men	Women	Total
Under 18	--	--	--	--	--	--	--	--	--
18	--	--	--	--	--	--	--	--	--
19	--	--	--	--	--	--	--	--	--
20	--	--	--	--	--	--	--	--	--
21	8	16	24	--	1	1	8	17	25
22	49	129	178	4	12	16	53	141	194
23	93	141	234	18	37	55	111	178	289
24	59	83	142	14	69	83	73	152	225
25	40	63	103	23	59	82	63	122	185
26	34	40	74	31	69	100	65	109	174
27	22	25	47	34	51	85	56	76	132
28	29	22	51	28	43	71	57	65	122
29	13	22	35	33	38	71	46	60	106
30-34	57	69	126	111	157	268	168	226	394
35-39	20	34	54	63	84	147	83	118	201
40-44	14	20	34	50	83	133	64	103	167
45-49	8	13	21	32	97	129	40	110	150
50-54	6	12	18	29	81	110	35	93	128
55-59	1	2	3	7	34	41	8	36	44
60-64	1	--	1	4	7	11	5	7	12
65 & Over	--	--	--	1	4	5	1	4	5
Total	454	691	1,145	482	926	1,408	936	1,617	2,553

Undergraduate and Graduate Census Day Headcount Enrollment
by Gender, College and Department
Fall 2004

College/Department	Undergraduate		Masters		Certificate		Doctoral	
	Male	Female	Male	Female	Male	Female	Male	Female
Applied Science and Technology	1,924	1,378	161	148	--	--	--	--
Agriculture	144	59	12	5	--	--	--	--
School of Information Technology	490	56	50	23	--	--	--	--
Criminal Justice Sciences	262	151	16	22	--	--	--	--
School of Kinesiology and Recreation	462	337	42	39	--	--	--	--
Health Sciences	108	249	4	1	--	--	--	--
Family and Consumer Sciences	11	490	2	47	--	--	--	--
Technology	447	36	35	11	--	--	--	--
Arts and Sciences	2,096	2,880	230	467	2	23	69	118
Biochemistry/Molecular Biology	33	35	--	--	--	--	--	--
Biological Sciences	173	242	13	23	--	--	21	19
Chemistry	90	48	27	12	--	--	--	--
Communication	263	514	22	56	--	--	--	--
Economics	102	28	23	14	--	--	--	--
English	178	408	22	43	--	--	34	56
Foreign Languages	35	114	7	28	--	--	--	--
Geography-Geology	63	23	8	10	--	--	--	--
History	399	211	29	18	--	--	--	--
Mathematics	219	226	26	27	--	--	6	13
Philosophy	39	16	--	--	--	--	--	--
Physics	98	16	--	--	--	--	--	--
Politics and Government	210	149	23	23	--	--	--	--
Psychology	113	391	19	51	2	23	8	30
School of Social Work	8	85	2	51	--	--	--	--
Sociology & Anthropology	69	159	6	25	--	--	--	--
Speech Pathology and Audiology	4	215	3	86	--	--	--	--
Business	1,689	1,245	140	84	--	--	--	--
Dean of Business	--	--	112	55	--	--	--	--
Accounting	228	189	28	29	--	--	--	--
Finance, Insurance and Law	282	169	--	--	--	--	--	--
Management & Quantitative Methods	818	529	--	--	--	--	--	--
Marketing	361	358	--	--	--	--	--	--
Education	203	2,289	84	321	7	4	59	120
Curriculum and Instruction	123	1,627	34	160	--	--	13	44
Educational Administration	--	--	44	78	7	4	43	68
Special Education	80	662	6	83	--	--	3	8
Fine Arts	447	559	71	79	--	--	--	--
Dean of Fine Arts	22	11	5	8	--	--	--	--
School of Art	164	223	19	14	--	--	--	--
School of Music	109	154	28	38	--	--	--	--
School of Theatre	152	171	19	19	--	--	--	--
Mennonite College of Nursing	34	518	2	27	--	--	--	--
Nursing	34	518	2	27	--	--	--	--
Other	6	21	--	--	--	--	--	--
Instructional Development	6	21	--	--	--	--	--	--
Non-Degree Seeking Students (No CIP)	1,252	1,325	111	226	--	--	--	--
Instructional Development	1,252	1,325	--	--	--	--	--	--
Technology	--	--	1	1	--	--	--	--
Women's Studies	--	--	1	1	--	--	--	--
Social Work	--	--	--	1	--	--	--	--
Curriculum and Instruction	--	--	--	1	--	--	--	--
Special Education	--	--	--	2	--	--	--	--
Nursing	--	--	--	2	--	--	--	--
Dean of the Graduate School	--	--	109	218	--	--	--	--
Total	7,651	10,215	799	1,352	9	27	128	238

Undergraduate Census Day Headcount Enrollment
by College, Department and Major
Fall 2000 through Fall 2004

<u>College/Department/Major</u>	<u>2000</u>	<u>2001</u>	<u>2002</u>	<u>2003</u>	<u>2004</u>
Applied Science and Technology	3,526	3,527	3,467	3,403	3,302
Agriculture					
Agribusiness	182	162	143	124	114
Agriculture	120	119	122	99	89
School of Information Technology					
Computer Science	685	464	344	270	191
Information Systems	75	239	279	241	223
Telecommunications Management	184	198	190	181	132
Criminal Justice Sciences					
Criminal Justice Sciences	410	426	393	417	413
School of Kinesiology and Recreation					
Physical Education	556	545	581	535	441
Athletic Training	--	--	--	44	106
Exercise Science	--	--	--	--	22
Recreation & Park Administration	150	157	158	182	230
Health Sciences					
Environmental Health	44	51	50	44	49
Health Education	76	93	114	117	124
Health Information Management	49	60	68	61	70
Clinical Laboratory Science	45	42	47	65	74
Safety	36	36	42	43	40
Family and Consumer Sciences					
Family and Consumer Sciences	449	464	482	501	501
Technology					
Industrial Technology	460	457	413	417	409
Technology Education	5	14	41	62	74
Arts and Sciences	4,653	4,621	4,841	5,053	4,976
Biochemistry/Molecular Biology					
Biochemistry/Molecular Biology	3	18	31	63	68
Biological Sciences					
Biological Sciences	469	441	426	416	415
Chemistry					
Biochemistry/Molecular Biology	--	18	25	--	--
Chemistry	153	118	127	135	138
Communication					
Mass Communication	404	382	406	428	356
Public Relations	291	236	257	276	253
Communication Studies	88	99	127	98	142
Journalism	--	--	--	--	26
Economics					
Economics	74	72	97	117	130
English					
English	550	563	576	645	586
Foreign Languages					
French	27	28	25	24	27
German	6	10	8	11	11
Spanish	83	93	108	111	111
Geography-Geology					
Geography	52	53	56	59	56
Geology	26	25	22	31	30
History					
History	375	451	483	455	476
Social Sciences Education	156	183	157	157	134
Mathematics					
Mathematics	247	270	304	383	445
Philosophy					
Philosophy	48	40	37	42	55
Physics					
Physics	116	108	102	109	114

Undergraduate Census Day Headcount Enrollment
by College, Department and Major
Fall 2000 through Fall 2004

<u>College/Department/Major</u>	<u>2000</u>	<u>2001</u>	<u>2002</u>	<u>2003</u>	<u>2004</u>
Politics and Government					
Political Science	271	303	332	370	359
Psychology					
Psychology	502	483	506	525	504
School of Social Work					
Social Work	213	199	203	160	70
Bachelor of Social Work	--	--	--	--	23
Sociology & Anthropology					
Anthropology	58	49	65	66	54
Sociology	249	202	168	154	174
Speech Pathology and Audiology					
Speech Pathology and Audiology	192	177	193	218	219
<u>Business</u>	<u>3,034</u>	<u>3,255</u>	<u>3,254</u>	<u>3,055</u>	<u>2,934</u>
Accounting					
Accountancy	469	513	409	318	297
Accountancy (BS/MPA)	--	22	97	137	120
Finance, Insurance and Law					
Finance	391	434	465	475	401
Insurance	42	40	43	31	50
Management & Quantitative Methods					
Business Administration	1,111	1,135	1,043	916	855
International Business	164	163	174	144	118
Management	213	255	318	341	374
Marketing					
Business Teacher Education	64	62	78	94	86
Marketing	580	631	627	599	633
<u>Education</u>	<u>2,739</u>	<u>2,896</u>	<u>2,805</u>	<u>2,531</u>	<u>2,492</u>
Curriculum and Instruction					
Early Childhood Education	281	319	343	296	255
Elementary Education	1,598	1,669	1,518	1,315	1,334
Middle Level Teacher Education	168	197	238	202	161
Special Education					
Special Education	692	711	706	718	742
<u>Fine Arts</u>	<u>1,045</u>	<u>1,005</u>	<u>943</u>	<u>987</u>	<u>1,006</u>
Dean of Fine Arts					
Arts Technology	1	19	23	21	33
School of Art					
Art	457	424	377	383	375
Bachelor of Fine Arts-Art	24	21	17	16	12
School of Music					
Music - (BM)	85	71	65	62	63
Music Education	138	134	137	145	150
Music - Liberal Arts	47	48	40	55	50
School of Theatre					
Theatre	293	288	284	305	323
<u>Mennonite College of Nursing</u>	<u>380</u>	<u>438</u>	<u>461</u>	<u>522</u>	<u>552</u>
Nursing					
Nursing	380	438	461	522	552
<u>Other</u>	<u>30</u>	<u>14</u>	<u>14</u>	<u>14</u>	<u>27</u>
Interdisciplinary Studies	30	14	14	14	16
University Studies	--	--	--	--	11
<u>Non-Degree Seeking Students (No CIP)</u>	<u>2,611</u>	<u>2,716</u>	<u>2,567</u>	<u>2,532</u>	<u>2,577</u>
General Student	2,552	2,637	2,490	2,469	2,506
Unclassified	59	79	77	63	71
<u>Total</u>	<u>20,018</u>	<u>20,473</u>	<u>20,354</u>	<u>20,100</u>	<u>19,870</u>

Graduate Census Day Headcount Enrollment
by Level, College, Department and Major
Fall 2000 through Fall 2004

<u>College/Department/Major</u>	Masters				
	<u>2000</u>	<u>2001</u>	<u>2002</u>	<u>2003</u>	<u>2004</u>
<u>Applied Science and Technology</u>	<u>322</u>	<u>365</u>	<u>365</u>	<u>343</u>	<u>309</u>
Agriculture					
Agribusiness	21	29	34	22	17
School of Information Technology					
Computer Science	75	94	88	85	25
Information Systems	--	--	--	--	48
Criminal Justice Sciences					
Criminal Justice Sciences	34	35	37	38	38
School of Kinesiology and Recreation					
Kinesiology and Recreation	104	102	93	83	81
Health Sciences					
Environmental Health & Safety	13	30	24	12	5
Family and Consumer Sciences					
Family and Consumer Sciences	47	47	51	58	49
Technology					
Industrial Technology	28	28	20	9	2
Technology	--	--	18	36	44
<u>Arts and Sciences</u>					
Biological Sciences	<u>702</u>	<u>666</u>	<u>709</u>	<u>732</u>	<u>696</u>
Biological Sciences	62	47	56	44	36
Chemistry					
Chemistry	41	36	41	43	39
Communication					
Communication	92	79	79	81	78
Economics					
Economics	--	--	--	--	4
Applied Economics	29	22	25	40	33
English					
English	57	57	63	65	50
Writing	19	19	20	12	14
Foreign Languages					
Foreign Languages	17	30	33	29	35
Geography-Geology					
Hydrogeology	14	10	16	15	18
History					
History	48	45	39	49	47
Mathematics					
Mathematics	17	31	37	32	53
Politics and Government					
Political Science	75	64	45	40	46
Psychology					
Psychology	90	83	79	66	46
Clinical-Counseling Psych	--	--	--	10	24
School of Social Work					
Social Work	20	33	49	60	53
Sociology and Anthropology					
Sociology	32	34	31	33	22
Historical Archaeology	--	--	5	9	9
Speech Pathology and Audiology					
Speech Pathology and Audiology	89	76	91	104	89

Graduate Census Day Headcount Enrollment
by Level, College, Department and Major
Fall 2000 through Fall 2004

<u>College/Department/Major</u>	Masters				
	<u>2000</u>	<u>2001</u>	<u>2002</u>	<u>2003</u>	<u>2004</u>
<u>Business</u>	<u>203</u>	<u>206</u>	<u>215</u>	<u>230</u>	<u>224</u>
Dean of Business					
Master of Business Administration	183	174	177	180	167
Accounting					
Accountancy	20	32	29	32	28
Accountancy BS/MPA	--	--	9	18	29
<u>Education</u>	<u>418</u>	<u>414</u>	<u>401</u>	<u>390</u>	<u>405</u>
Curriculum and Instruction					
Alt Secondary Certificate	--	--	--	--	2
Curriculum and Instruction	83	82	64	64	76
Reading	101	105	108	110	96
Instructional Technology and Design	--	--	5	17	20
Educational Administration & Foundations					
Educational Administration	145	163	164	139	122
Special Education					
Counselor Education	1	--	--	--	--
Special Education	88	64	60	60	89
<u>Fine Arts</u>	<u>140</u>	<u>143</u>	<u>135</u>	<u>137</u>	<u>150</u>
Dean of Fine Arts					
Arts Technology	6	13	13	11	13
School of Art					
Art	24	19	15	6	7
Master of Fine Arts	20	18	18	22	26
School of Music					
Music	42	40	47	59	60
Master of Music Education (MME)	11	13	8	6	6
School of Theatre					
Theatre	10	14	11	9	12
Master of Fine Arts/Theatre (MFA)	27	26	23	24	26
<u>Mennonite College of Nursing</u>					
Nursing					
Nursing (MSN)	34	28	23	22	29
<i>Non-Degree Seeking Students (No CIP)</i>	<u>347</u>	<u>392</u>	<u>408</u>	<u>364</u>	<u>337</u>
<u>Applied Science and Technology</u>					
Technology Project Management (GC)	--	--	--	1	1
Technology Training and Development (GC)	--	--	--	--	1
<u>Arts and Sciences</u>					
Women's Studies (GC)	--	--	1	3	2
Social Aspects of Aging (GC)	--	--	--	--	1
<u>Education</u>					
National Board for Professional Teachers	--	--	--	--	1
LBS 2 Technology Spce	--	--	--	--	2
<u>Mennonite College of Nursing</u>					
Nurse Educator	--	--	--	--	2
<u>Other</u>					
Student-At-Large	347	392	407	360	327
Masters Total	2,166	2,214	2,256	2,218	2,150

Graduate Census Day Headcount Enrollment
by Level, College, Department and Major
Fall 2000 through Fall 2004

College/Department/Major	Certificate				
	2000	2001	2002	2003	2004
<u>Arts and Sciences</u>					
English					
Teaching Writing High/Middle School (PB)	--	--	--	--	1
Psychology					
School Psychology (S.S.P.)	21	20	21	24	25
<u>Education</u>					
Educational Administration & Foundations					
Educational Administration (C.A.S.)	--	1	--	--	--
Ed Admin General Administration (PMGC)	--	--	--	1	2
Ed Admin Superintendent Endorsement (PMGC)	--	--	--	5	9
<u>Mennonite College of Nursing</u>					
Nursing					
Family Nursing Practitioner Certificate (PMFNP)	1	--	2	1	--
Certificate Total	22	21	23	31	37

College/Department/Major	Doctoral				
	2000	2001	2002	2003	2004
<u>Arts and Sciences</u>					
Biological Sciences					
Biological Sciences (Ph.D.)	19	29	36	36	40
English					
English Studies (Ph.D.)	48	56	65	79	90
History					
History (D.A.)	9	5	6	1	--
Mathematics					
Mathematics (D.A.)	--	--	1	--	--
Mathematic Education (Ph.D.)	26	25	23	19	19
Psychology					
School Psychology (Ph.D.)	29	31	32	33	38
<u>Education</u>					
Curriculum and Instruction					
Curriculum and Instruction (Ed.D.)	67	67	70	68	57
Educational Administration & Foundations					
Educational Administration (Ed.D. and Ph.D.)	89	103	98	110	111
Special Education					
Special Education (Ed.D.)	11	12	13	13	11
<u>Fine Arts</u>					
Art					
Art Education (Ed.D.)	--	--	--	--	--
Doctoral Total	298	328	344	359	366
Graduate Total	2,486	2,563	2,623	2,608	2,553

Undergraduate Census Day Headcount Enrollment
by Racial/Ethnic Designation, College, Department and Major
Fall 2004

College/Department/Major	American Indian/ Alaskan Native	Black/ Non- Hispanic	Asian/ Pacific Islander	Hispanic	White/ Non- Hispanic	Non- Resident Alien	Unknown	Total
Applied Science and Technology	<u>5</u>	<u>183</u>	<u>38</u>	<u>83</u>	<u>2,923</u>	<u>24</u>	<u>46</u>	<u>3,302</u>
Agriculture								
Agribusiness	--	1	--	1	109	--	3	114
Agriculture	--	--	--	--	89	--	--	89
School of Information Technology								
Computer Science	--	9	6	1	165	7	3	191
Information Systems	--	19	2	9	183	4	6	223
Telecommunications Management	--	6	2	2	118	1	3	132
Criminal Justice Sciences								
Criminal Justice Sciences	2	25	3	17	355	1	10	413
School of Kinesiology and Recreation								
Physical Education	--	16	4	19	396	3	3	441
Recreation & Park Administration	1	20	1	4	203	--	1	230
Athletic Training	1	6	--	4	93	1	1	106
Exercise Science	--	2	1	--	18	--	1	22
Health Sciences								
Environmental Health	--	3	1	--	44	1	--	49
Health Education	--	7	--	1	113	1	2	124
Health Information Management	--	11	4	1	53	1	--	70
Clinical Laboratory Science	--	7	--	6	59	1	1	74
Safety	--	1	--	1	37	--	1	40
Family and Consumer Sciences								
Family and Consumer Sciences	--	19	7	11	458	--	6	501
Technology								
Industrial Technology	1	28	7	6	360	3	4	409
Technology Education	--	3	--	--	70	--	1	74
Arts and Sciences	<u>17</u>	<u>264</u>	<u>95</u>	<u>147</u>	<u>4,298</u>	<u>59</u>	<u>96</u>	<u>4,976</u>
Biochemistry/Molecular Biology								
Biochemistry/Molecular Biology	1	6	2	1	53	3	2	68
Biological Sciences								
Biological Sciences	1	27	12	4	354	6	11	415
Chemistry								
Chemistry	--	8	5	1	119	2	3	138
Communication								
Mass Communication	--	24	7	11	292	19	3	356
Public Relations	--	13	4	5	227	3	1	253
Communication Studies	--	4	1	3	128	2	4	142
Journalism	--	1	2	--	22	--	1	26
Economics								
Economics	--	16	1	4	100	7	2	130
English								
English	1	26	11	23	517	--	8	586
Foreign Languages								
French	--	1	2	--	24	--	--	27
German	--	--	--	--	11	--	--	11
Spanish	--	5	2	19	82	--	3	111
Geography-Geology								
Geography	1	--	--	2	52	--	1	56
Geology	1	--	--	3	25	--	1	30
History								
History	3	9	9	10	438	--	7	476
Social Sciences Education	2	6	2	1	120	--	3	134
Mathematics								
Mathematics	1	14	9	19	382	6	14	445
Philosophy								
Philosophy	--	5	2	--	47	--	1	55
Physics								
Physics	--	3	2	1	95	5	8	114

Undergraduate Census Day Headcount Enrollment
by Racial/Ethnic Designation, College, Department and Major
Fall 2004

College/Department/Major	American Indian/ Alaskan Native	Black/ Non- Hispanic	Asian/ Pacific Islander	Hispanic	White/ Non- Hispanic	Non- Resident Alien	Unknown	Total
Politics and Government								
Political Science	3	27	2	13	301	2	11	359
Psychology								
Psychology	2	31	9	10	448	--	4	504
School of Social Work								
Social Work	--	4	2	--	63	--	1	70
Bachelor of Social Work	--	--	--	--	21	1	1	23
Sociology & Anthropology								
Anthropology	--	2	3	1	46	1	1	54
Sociology	1	19	3	8	139	2	2	174
Speech Pathology and Audiology								
Speech Pathology and Audiology	--	13	3	8	192	--	3	219
Business	<u>7</u>	<u>141</u>	<u>62</u>	<u>75</u>	<u>2,572</u>	<u>32</u>	<u>45</u>	<u>2,934</u>
Accounting								
Accountancy	--	16	5	6	260	3	7	297
Accountancy (BS/MPA)	--	6	2	3	105	--	4	120
Finance, Insurance and Law								
Finance	--	26	10	6	349	7	3	401
Insurance	--	1	1	2	45	--	1	50
Management & Quantitative Methods								
Business Administration	5	41	14	16	754	7	18	855
International Business	--	6	10	15	78	8	1	118
Management	--	17	5	8	340	3	1	374
Marketing								
Business Teacher Education	--	2	5	--	77	--	2	86
Marketing	2	26	10	19	564	4	8	633
Education	<u>9</u>	<u>75</u>	<u>22</u>	<u>62</u>	<u>2,289</u>	<u>3</u>	<u>32</u>	<u>2,492</u>
Curriculum and Instruction								
Early Childhood Education	1	15	2	4	228	--	5	255
Elementary Education	5	31	16	36	1,231	1	14	1,334
Middle Level Teacher Education	1	10	1	2	147	--	--	161
Special Education								
Special Education	2	19	3	20	683	2	13	742
Fine Arts	<u>5</u>	<u>49</u>	<u>16</u>	<u>28</u>	<u>883</u>	<u>6</u>	<u>19</u>	<u>1,006</u>
Dean of Fine Arts								
Arts Technology	--	1	--	1	30	--	1	33
School of Art								
Art	1	16	4	13	332	4	5	375
Bachelor of Fine Arts-Art	--	--	--	--	12	--	--	12
School of Music								
Music - (BM)	2	--	3	1	54	2	1	63
Music Education	1	2	3	5	137	--	2	150
Music - Liberal Arts	--	4	3	1	40	--	2	50
School of Theatre								
Theatre	1	26	3	7	278	--	8	323
Mennonite College of Nursing	<u>1</u>	<u>19</u>	<u>14</u>	<u>16</u>	<u>487</u>	<u>3</u>	<u>12</u>	<u>552</u>
Nursing								
Nursing	1	19	14	16	487	3	12	552
Other	<u>--</u>	<u>9</u>	<u>--</u>	<u>1</u>	<u>17</u>	<u>--</u>	<u>--</u>	<u>27</u>
Interdisciplinary Studies	--	4	--	1	11	--	--	16
University Studies	--	5	--	--	6	--	--	11
Non-Degree Seeking Students (No CIP)	<u>7</u>	<u>370</u>	<u>47</u>	<u>116</u>	<u>1,933</u>	<u>28</u>	<u>76</u>	<u>2,577</u>
General Student	7	365	45	116	1,891	13	69	2,506
Unclassified	--	5	2	--	42	15	7	71
Undergraduate Total	<u>51</u>	<u>1,110</u>	<u>294</u>	<u>528</u>	<u>15,402</u>	<u>155</u>	<u>326</u>	<u>17,866</u>

Graduate Census Day Headcount Enrollment by Level
by Racial/Ethnic Designation, College, Department and Major
Fall 2004

College/Department/Major	Masters							Total
	American Indian/ Alaskan Native	Black/ Non- Hispanic	Asian/ Pacific Islander	Hispanic	White/ Non- Hispanic	Non- Resident Alien	Unknown	
Applied Science and Technology	<u>1</u>	<u>14</u>	<u>5</u>	<u>3</u>	<u>224</u>	<u>62</u>	<u>--</u>	<u>309</u>
Agriculture								
Agribusiness	--	--	--	1	6	10	--	17
School of Information Technology								
Computer Science	--	1	4	1	27	40	--	73
Criminal Justice Sciences								
Criminal Justice Sciences	--	4	--	1	33	2	--	40
School of Kinesiology and Recreation								
Kinesiology & Recreation	--	1	--	--	77	3	--	81
Health Sciences								
Environmental Health & Safety	--	--	1	--	4	--	--	5
Family and Consumer Sciences								
Family and Consumer Sciences	--	2	--	--	46	1	--	49
Technology								
Industrial Technology	--	--	--	--	--	--	--	--
Technology	1	6	--	--	31	6	--	44
Arts and Sciences	<u>1</u>	<u>44</u>	<u>16</u>	<u>18</u>	<u>515</u>	<u>88</u>	<u>14</u>	<u>696</u>
Biological Sciences								
Biological Sciences	--	--	2	1	26	4	3	36
Chemistry								
Chemistry	--	3	1	--	25	10	--	39
Communication								
Communication	--	4	1	1	65	6	1	78
Economics								
Applied Economics	--	--	--	--	15	22	--	37
English								
English	1	4	--	1	34	10	--	50
Writing	--	2	--	1	8	3	--	14
Foreign Languages								
Foreign Languages	--	1	1	2	28	3	--	35
Geography-Geology								
Hydrogeology	--	--	--	1	15	2	--	18
History								
History	--	3	4	3	36	--	1	47
Mathematics								
Mathematics	--	--	3	--	31	16	3	53
Politics and Government								
Political Science	--	4	2	3	30	6	1	46
Psychology								
Psychology	--	2	--	1	38	3	2	46
Clinical-Counseling Psych	--	1	--	--	23	--	--	24
School of Social Work								
Social Work	--	12	1	1	36	1	2	53
Sociology & Anthropology								
Sociology	--	4	--	--	16	1	1	22
Historical Archeology	--	--	--	--	9	--	--	9
Speech Pathology and Audiology								
Speech Pathology and Audiology	--	4	1	3	80	1	--	89

Graduate Census Day Headcount Enrollment by Level
by Racial/Ethnic Designation, College, Department and Major
Fall 2004

College/Department/Major	Masters							Total
	American	Indian/	Black/	Asian/	White/	Non-	Unknown	
	Native	Alaskan	Non-Hispanic	Pacific Islander	Non-Hispanic	Resident Alien		
Business	--	4	7	3	171	37	2	224
Dean of Business								
Business Administration (MBA)	--	4	4	2	131	24	2	167
Accounting								
Accountancy	--	--	2	--	13	13	--	28
Accountancy BS/MPA	--	--	1	1	27	--	--	29
Education	1	9	7	3	376	5	4	405
Curriculum and Instruction								
Alt Secondary Certificate	--	--	--	--	2	--	--	2
Curriculum & Instruction	--	2	3	1	70	--	--	76
Reading	--	2	1	--	93	--	--	96
Instructional Technology and Design	--	1	--	--	15	4	--	20
Educational Administration and Foundations								
Educational Admin.	1	3	3	2	110	--	3	122
Special Education								
Special Education	--	1	--	--	86	1	1	89
Fine Arts	1	3	1	1	115	25	4	150
Dean of Fine Arts								
Arts Technology	1	--	--	--	11	1	--	13
School of Art								
Art	--	--	--	--	6	1	--	7
Art (MFA)	--	--	--	1	20	3	2	26
School of Music								
Music	--	2	1	--	38	18	1	60
Music Education (MME)	--	--	--	--	6	--	--	6
School of Theatre								
Theatre	--	1	--	--	10	1	--	12
Theatre (MFA)	--	--	--	--	24	1	1	26
Mennonite College of Nursing	--	--	--	--	29	--	--	29
Nursing								
Nursing (MSN)	--	--	--	--	29	--	--	29
Non Degree Seeking Students (No CIP)	2	28	5	8	277	12	5	337
Applied Science and Technology								
Technology Project Management	--	--	--	--	1	--	--	1
Technology Training and Deveopment	--	1	--	--	--	--	--	1
Arts and Sciences								
Women's Studies	--	--	--	--	2	--	--	2
Social Aspects of Aging	--	1	--	--	--	--	--	1
Education								
National Board for Professional Teachers	--	--	--	--	1	--	--	1
LBS 2 Technology Spece	--	--	--	--	1	1	--	2
Nursing								
Nurse Educator	--	--	--	--	2	--	--	2
Other								
Student-at-Large	2	26	5	8	270	11	5	327
Masters Total	6	102	41	36	1,707	229	29	2,150

Graduate Census Day Headcount Enrollment by Level
by Racial/Ethnic Designation, College, Department and Major
Fall 2004

College/Department/Major	Certificate							Total
	American	Black/	Asian/	White/	Non-	Unknown		
	Indian/ Alaskan Native	Non- Hispanic	Pacific Islander	Non- Hispanic	Resident Alien			
Arts and Sciences	--	--	--	--	26	--	--	26
English								
Teaching Writing High/Middle School	--	--	--	--	1	--	--	1
Psychology								
School Psychology (S.S.P.)	--	--	--	--	25	--	--	25
Education	--	3	--	--	8	--	--	11
Educational Administration and Foundation								
Ed Admin/General Administration	--	--	--	--	2	--	--	2
Ed Admin/ Superintendent Endorsement	--	3	--	--	6	--	--	9
Certificate Total	--	3	--	--	34	--	--	37
	Doctoral							
College/Department/Major	American	Black/	Asian/	White/	Non-	Unknown		Total
	Indian/ Alaskan Native	Non- Hispanic	Pacific Islander	Non- Hispanic	Resident Alien			
	Arts and Sciences	1	5	2	5	118	56	
Biological Sciences								
Biological Sciences (Ph.D.)	--	--	1	--	18	21	--	40
English								
English Studies (Ph.D.)	--	3	--	1	59	27	--	90
Mathematics								
Mathematics Education (Ph.D.)	--	1	--	1	10	7	--	19
Psychology								
School Psychology (Ph.D.)	1	1	1	3	31	1	--	38
Education	1	21	1	2	142	10	2	179
Curriculum and Instruction								
Curriculum & Instruction (Ed.D)	--	2	--	1	45	8	1	57
Educational Administration and Foundations								
Educational Admin. (Ed.D. & Ph.D.)	1	19	1	1	86	2	1	111
Special Education								
Special Education (Ed.D.)	--	--	--	--	11	--	--	11
Doctoral Total	2	26	3	7	260	66	2	366
Graduate Total	8	131	44	43	2,001	295	31	2,553

Enrollment by Geographic Location
Fall 2004

Illinois County (by High School address)

County	Under-graduate	Graduate	County	Under-graduate	Graduate	County	Under-graduate	Graduate	County	Under-graduate	Graduate
Adams	81	4	Ford	65	6	Livingston	226	40	Randolph	9	--
Alexander	1	--	Franklin	3	--	Logan	88	32	Richland	3	2
Bond	8	2	Fulton	86	13	Macon	234	65	Rock Island	202	28
Boone	59	3	Gallatin	--	--	Macoupin	43	3	Saline	2	--
Brown	2	--	Greene	5	1	Madison	138	16	Sangamon	383	64
Bureau	135	23	Grundy	192	14	Marion	9	2	Schuyler	6	3
Calhoun	5	--	Hamilton	1	--	Marshall	44	8	Scott	4	--
Carroll	17	4	Hancock	18	2	Mason	46	11	Shelby	22	4
Cass	16	5	Hardin	--	--	Massac	1	--	St. Clair	150	5
Champaign	454	54	Henderson	2	1	McDonough	29	9	Stark	20	3
Christian	51	5	Henry	132	17	McHenry	495	18	Stephenson	64	8
Clark	4	1	Iroquois	99	12	McLean	1,334	591	Tazewell	429	135
Clay	5	--	Jackson	18	--	Menard	38	9	Union	5	--
Clinton	30	2	Jasper	5	1	Mercer	34	4	Vermilion	171	16
Coles	41	4	Jefferson	6	1	Monroe	13	1	Wabash	4	--
Cook	4,234	161	Jersey	18	--	Montgomery	47	3	Warren	29	2
Crawford	8	1	Jo Davies	19	2	Morgan	71	7	Washington	4	--
Cumberland	4	3	Johnson	2	--	Moultrie	9	2	Wayne	1	1
Dekalb	83	7	Kane	720	31	Ogle	72	3	White	1	--
DeWitt	83	27	Kankakee	201	20	Peoria	451	168	Whiteside	110	6
Douglas	33	2	Kendall	122	5	Perry	8	1	Will	996	48
DuPage	1,852	35	Knox	84	15	Piatt	53	11	Williamson	13	--
Edgar	8	3	Lake	990	30	Pike	14	6	Winnebago	316	19
Edwards	--	--	Lasalle	359	73	Pope	--	--	Woodford	262	58
Effingham	49	4	Lawrence	1	1	Pulaski	1	--			
Fayette	7	1	Lee	38	8	Putnam	23	3	Illinois Total	17,183	2,019

State

State	Under-graduate	Graduate	State	Under-graduate	Graduate	State	Under-graduate	Graduate	State	Under-graduate	Graduate
Alabama	6	1	Indiana	40	15	Nevada	--	1	Tennessee	7	6
Alaska	2	1	Iowa	30	18	New Hampshire	2	--	Texas	11	13
Arizona	6	4	Kansas	6	5	New Jersey	1	2	Utah	2	3
Arkansas	4	--	Kentucky	6	4	New Mexico	--	1	Vermont	9	6
California	40	8	Louisiana	2	3	New York	9	14	Virginia	--	2
Colorado	12	5	Maine	2	3	North Carolina	5	3	Washington	11	2
Connecticut	--	3	Maryland	5	3	North Dakota	4	--	West Virginia	--	1
Delaware	2	--	Massachusetts	2	4	Ohio	17	13	Wisconsin	43	16
Dist. of Columbia	--	--	Michigan	32	13	Oklahoma	4	1	Wyoming	--	--
Florida	37	5	Minnesota	12	13	Oregon	2	3	Territories	4	1
Georgia	11	3	Mississippi	5	1	Pennsylvania	11	5	U.S. Foreign	47	11
Hawaii	2	--	Missouri	57	9	Rhode Island	1	3			
Idaho	3	3	Montana	2	--	South Carolina	5	--			
Illinois	17,183	2,019	Nebraska	8	8	South Dakota	--	--	U. S. Total	17,712	2,258

Enrollment by Geographic Location
Fall 2004

Country

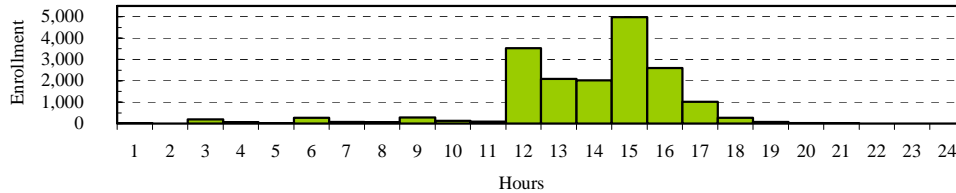
Country	Under-graduate	Graduate	Country	Under-graduate	Graduate	Country	Under-graduate	Graduate	Country	Under-graduate	Graduate	
Algeria	1	--	Finland	--	1	Mauritius	--	2	St Christopher/Nevis	1	--	
Armenia	--	1	France	4	1	Mexico	3	--	St Vincent & Grenad	--	2	
Australia	--	1	Germany	6	6	Mozambique	--	2	Sweden	--	1	
Bangladesh	1	--	Germany Fed Rep	--	2	Nepal	2	--	Switzerland	1	--	
Barbados	3	1	Ghana	1	10	Netherlands	1	--	Taiwan	2	6	
Belgium	1	--	Greece	--	1	New Zealand	1	--	Tanzania	--	1	
Brazil	1	2	Hong Kong	2	--	Nicaragua	--	1	Thailand	--	21	
Bulgaria	1	1	Hungary	3	2	Nigeria	4	2	Trinidad & Tobago	--	1	
Cameroon	--	4	India	9	105	Pakistan	3	1	Turkey	--	4	
Canada	19	4	Indonesia	1	--	Philippines	--	2	Turkmenistan	1	--	
Chad	--	1	Iran	1	3	Poland	--	3	United Kingdom	4	1	
China	5	28	Ivory Coast	1	1	Portugal	--	1	United States	17,712	2,258	
Colombia	2	1	Jamaica	--	1	Romania	--	2	Upper Volta	--	2	
Congo	1	--	Japan	11	11	Russia	2	7	USSR	1	--	
Dominica	1	--	Jordan	--	1	Rwanda	--	1	Venezuela	2	1	
Dominican Rep.	1	1	Kenya	6	7	Saudi Arabia	--	1	Vietnam	--	1	
Ecuador	--	1	Korea, South	33	13	Senegal	1	1	Yugoslavia	1	--	
Egypt	--	2	Kuwait	--	2	South Africa	2	2	Zaire	--	--	
Estonia	1	1	Lebanon	1	--	Spain	1	1	Zambia	1	2	
Ethiopia	--	2	Malaysia	1	2	Sri Lanka	1	2	Zimbabwe	1	1	
										Total Enrollment	17,866	2,553

Census Day On-Campus Enrollment
by Semester Hours Carried and Illinois Residency
Fall 2004

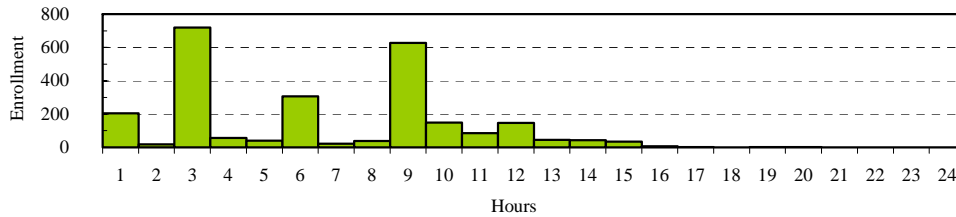
Hours ¹	Undergraduate			Graduate			Total		
	Non-			Non-			Non-		
	Resident	Resident	Total	Resident	Resident	Total	Resident	Resident	Total
0	10	--	10	--	--	--	10	--	10
1	14	--	14	160	44	204	174	44	218
2	6	--	6	17	2	19	23	2	25
3	196	2	198	703	16	719	899	18	917
4	59	--	59	51	6	57	110	6	116
5	17	1	18	37	4	41	54	5	59
6	275	1	276	287	20	307	562	21	583
7	82	2	84	20	2	22	102	4	106
8	65	1	66	34	5	39	99	6	105
9	289	2	291	394	233	627	683	235	918
10	136	--	136	86	64	150	222	64	286
11	92	2	94	59	26	85	151	28	179
12	3,472	59	3,531	100	47	147	3,572	106	3,678
13	2,057	36	2,093	28	18	46	2,085	54	2,139
14	2,008	13	2,021	33	10	43	2,041	23	2,064
15	4,944	38	4,982	27	9	36	4,971	47	5,018
16	2,579	15	2,594	3	3	6	2,582	18	2,600
17	1,003	11	1,014	1	1	2	1,004	12	1,016
18	267	2	269	--	--	--	267	2	269
19	70	2	72	1	--	1	71	2	73
20	22	--	22	--	2	2	22	2	24
21	10	--	10	--	--	--	10	--	10
22	3	--	3	--	--	--	3	--	3
23	1	--	1	--	--	--	1	--	1
24	2	--	2	--	--	--	2	--	2
Total	17,679	187	17,866	2,041	512	2,553	19,720	699	20,419

¹ Hours are rounded up.

Undergraduate
Hours Carried
Fall 2004



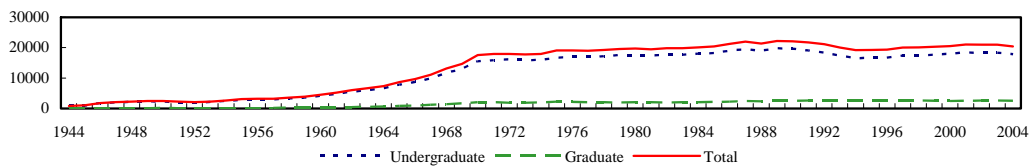
Graduate
Hours Carried
Fall 2004



Historical Headcount Enrollment
Fall 1975 through Fall 2004

	Under-graduate	Graduate	Total		Under-graduate	Graduate	Total		Under-graduate	Graduate	Total
1975	16,755	2,293	19,048	1985	18,253	2,166	20,419	1995	16,663	2,631	19,294
1976	16,890	2,159	19,049	1986	18,991	2,287	21,278	1996	16,763	2,646	19,409
1977	17,002	2,037	19,039	1987	19,597	2,444	22,041	1997	17,366	2,679	20,045
1978	17,191	2,059	19,250	1988	18,997	2,397	21,394	1998	17,518	2,587	20,105
1979	17,605	1,971	19,576	1989	19,803	2,438	22,241	1999	17,703	2,578	20,281
1980	17,625	2,092	19,717	1990	19,651	2,404	22,055	2000	18,018	2,486	20,504
1981	17,392	2,087	19,479	1991	19,098	2,670	21,768	2001	18,472	2,563	21,035
1982	17,821	1,996	19,817	1992	18,467	2,662	21,129	2002	18,352	2,623	20,975
1983	17,715	2,102	19,817	1993	17,404	2,663	20,067	2003	18,097	2,608	20,705
1984	18,050	2,084	20,134	1994	16,516	2,650	19,166	2004	17,866	2,553	20,419

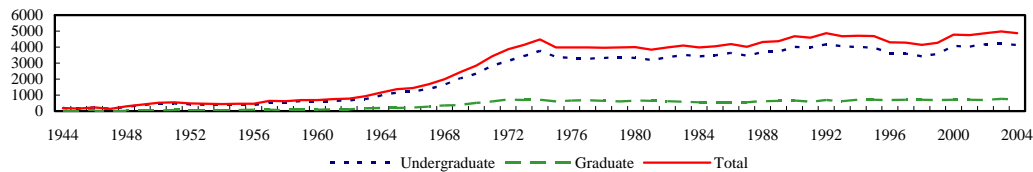
Historical Headcount Enrollment Fall 1944 through Fall 2004



Historical Degrees Conferred
Fiscal Years 1975 through 2004

	Under-graduate	Graduate	Total		Under-graduate	Graduate	Total		Under-graduate	Graduate	Total
1975	3,378	608	3,986	1985	3,491	558	4,049	1995	3,989	712	4,701
1976	3,328	656	3,984	1986	3,642	548	4,190	1996	3,609	690	4,299
1977	3,293	683	3,976	1987	3,463	558	4,021	1997	3,582	712	4,294
1978	3,320	651	3,971	1988	3,694	621	4,315	1998	3,433	713	4,146
1979	3,361	615	3,976	1989	3,738	634	4,372	1999	3,572	694	4,266
1980	3,326	666	3,992	1990	4,019	658	4,677	2000	4,070	712	4,782
1981	3,190	645	3,835	1991	3,983	598	4,581	2001	4,041	707	4,748
1982	3,363	627	3,990	1992	4,171	705	4,876	2002	4,179	703	4,882
1983	3,514	586	4,100	1993	4,056	625	4,681	2003	4,202	773	4,975
1984	3,424	550	3,974	1994	4,005	715	4,720	2004	4,148	728	4,876

Historical Degrees Conferred Fiscal Years 1944 through 2004



Degrees Conferred by College, Level, Department and Major
Fiscal Years 2000 through 2004

College/Department/Major	Baccalaureate				
	2000	2001	2002	2003	2004
Applied Science and Technology					
Agriculture					
B.S. in Agribusiness	63	65	61	60	55
B.S. in Agriculture	30	41	45	45	38
School of Information Technology					
B.S. in Applied Computer Science	124	142	118	77	62
B.S. in Telecommunications Management	24	35	62	57	48
B.S. in Information Systems	--	--	10	18	35
Criminal Justice Sciences					
B.A. and B.S. in Criminal Justice Sciences	181	171	153	176	162
School of Kinesiology and Recreation					
B.A., B.S. and B.S.Ed. in Physical Education	129	128	109	128	122
B.S. in Recreation and Park Administration	59	65	70	52	75
Health Sciences					
B.S. in Environmental Health	22	22	21	20	19
B.A., B.S., and B.S.Ed. in Health Education	38	34	26	36	27
B.S. in Health Information Management	21	14	13	24	18
B.S. in Clinical Laboratory Science	9	8	11	7	13
B.S. in Safety	19	10	8	11	12
Family & Consumer Sciences					
B.A. and B.S. in Family and Consumer Sciences	118	96	112	120	120
Technology					
B.S. in Industrial Technology	138	140	141	169	133
B.S. in Technology Education	--	--	--	1	8
College Total	975	971	960	1,001	947
Arts and Sciences					
Biochem/Molecular Biology					
B.S. in Biochem/Molecular Biology	--	--	--	--	8
Biological Sciences					
B.S. in Biological Sciences	94	83	80	94	75
B.S. in Biochem/Molecular Biology	--	--	1	2	--
Chemistry					
B.A. and B.S. in Chemistry	24	27	33	20	25
B.S. in Biochem/Molecular Biology	--	4	4	2	--
Communication					
B.A. and B.S. in Mass Communication	134	139	134	93	125
B.A. and B.S. in Public Relations	138	132	96	77	109
B.A. and B.S. in Communication Studies	52	42	27	49	42
Economics					
B.A. and B.S. in Economics	40	31	26	45	45
English					
B.A. and B.S. in English	119	108	127	125	147
Foreign Languages					
B.A. in French	9	6	9	6	5
B.A. in German	2	2	1	1	1
B.A. in Russian Studies	1	1	--	--	--
B.A. in Spanish	20	18	13	23	23
Geography-Geology					
B.A. and B.S. in Geography	21	17	21	16	23
B.S. in Geology	14	10	3	12	5

Degrees Conferred by College, Level, Department and Major
Fiscal Years 2000 through 2004

College/Department/Major	Baccalaureate				
	2000	2001	2002	2003	2004
History					
B.A. and B.S. in History	116	92	129	114	120
B.A. and B.S. in Social Sciences Education	64	41	70	49	39
Mathematics					
B.A. and B.S. in Mathematics	36	34	46	34	54
Philosophy					
B.A. and B.S. in Philosophy	11	9	10	10	12
Physics					
B.S. in Physics	12	14	15	25	19
Politics and Government					
B.A. and B.S. in Political Science	77	83	89	84	102
Psychology					
B.A. and B.S. in Psychology	130	152	139	150	161
School of Social Work					
BSW in Social Work	102	68	83	71	71
Sociology & Anthropology					
B.A. and B.S. in Anthropology	11	14	13	18	20
B.A. and B.S. in Sociology	111	125	98	115	56
Speech Pathology and Audiology					
B.S. in Speech Pathology and Audiology	57	69	42	45	72
College Total	1,395	1,321	1,309	1,280	1,359
Business					
Accounting					
B.S. in Accountancy	79	66	89	63	69
B.S./MPA in Accountancy	--	--	--	8	18
Finance and Law					
B.S. in Finance	158	143	126	146	189
B.S. in Insurance	17	13	16	21	18
Management & Quantitative Methods					
B.S. in Business Administration	184	204	234	240	193
B.A. and B.S. in International Business	33	39	28	31	34
B.S. in Management	62	63	57	71	99
Marketing					
B.A., B.S., and B.S.Ed. in Business Teacher Education	9	18	12	11	22
B.S. in Marketing	158	181	194	191	190
College Total	700	727	756	782	832
Education					
Curriculum and Instruction					
B.S. and B.S.Ed. in Early Childhood Education	67	65	63	97	94
B.S. and B.S.Ed. in Elementary Education	385	414	502	478	343
B.S. and B.S.Ed. in Jr. High/Middle School Educ.	55	44	46	62	79
Special Education					
B.S. and B.S.Ed. in Special Education	195	179	177	175	164
College Total	702	702	788	812	680

Degrees Conferred by College, Level, Department and Major
Fiscal Years 2000 through 2004

College/Department/Major	Baccalaureate				
	2000	2001	2002	2003	2004
<u>Fine Arts</u>					
Dean of Fine Arts					
B.A. and B.S. in Arts Technology	--	1	2	6	11
School of Art					
B.A. and B.S. in Art	99	105	116	96	74
B.F.A. in Art	8	15	14	10	10
School of Music					
B.M. in Performance	10	12	18	7	13
Bachelor of Music Education	16	19	16	23	15
B.A. and B.S. in Music (Liberal Arts)	9	15	11	8	14
School of Theatre					
B.A. and B.S. in Theatre	41	55	57	57	49
College Total	183	222	234	207	186
<u>Menonite College of Nursing</u>					
Nursing					
B.S. in Nursing	60	50	96	84	86
College Total	60	50	96	84	86
<u>Other</u>					
B.A. and B.S. in Interdisciplinary Studies	55	48	36	36	56
B.A. and B.S. in University Studies	--	--	--	--	2
Other Total	55	48	36	36	58
Total	4,070	4,041	4,179	4,202	4,148

Degrees Conferred by College, Level, Department and Major
Fiscal Years 2000 through 2004

College/Department/Major	Masters				
	2000	2001	2002	2003	2004
Applied Science and Technology					
Agriculture					
M.S. in Agribusiness	4	2	4	8	7
School of Information Technology					
M.S. in Information Systems	40	25	23	28	31
Criminal Justice Sciences					
M.A. and M.S. in Criminal Justice Sciences	4	10	9	9	10
School of Kinesiology and Recreation					
M.S. in Kinesiology and Recreation	63	31	44	41	40
Health Sciences					
M.S. in Environmental Health & Safety	--	--	1	6	8
Family & Consumer Sciences					
M.A. and M.S. in Family and Consumer Sciences	16	20	24	14	24
Technology					
M.S. in Industrial Technology	10	10	11	5	2
M.S. in Technology	--	--	--	6	8
College Total	137	98	116	117	130
Arts and Sciences					
Biological Sciences					
M.S. in Biological Sciences	19	25	15	16	15
Chemistry					
M.S. in Chemistry	12	7	16	12	13
Communication					
M.A. and M.S. in Communication	34	29	32	25	22
Economics					
M.A. and M.S. in Economics	3	--	--	--	--
M.A. and M.S. in Applied Economics	13	9	16	3	13
English					
M.A. and M.S. in English	25	17	36	17	33
M.A. and M.S. in Writing	2	3	3	2	3
Foreign Languages					
M.A. in Foreign Languages	6	5	6	8	8
Geography-Geology					
M.S. in Hydrogeology	4	3	8	7	1
History					
M.A. and M.S. in History	14	13	15	14	12
Mathematics					
M.A. and M.S. in Mathematics	17	8	10	13	16
Politics and Government					
M.A. and M.S. in Political Science	11	14	21	22	12
Psychology					
M.A. and M.S. in Psychology	30	40	30	30	17
M.A. and M.S. in Clinical-Counseling Psychology	--	--	--	--	13
Social Work					
Master of Social Work	--	--	--	22	23
Sociology & Anthropology					
M.A. and M.S. in Sociology	5	6	9	9	6
M.A. and M.S. in Historical Archeology	--	--	--	--	1
Speech Pathology and Audiology					
M.A. and M.S. in Speech Pathology and Audiology	32	50	38	34	37
College Total	227	229	255	234	245

Degrees Conferred by College, Level, Department and Major
Fiscal Years 2000 through 2004

<u>College/Department/Major</u>	Masters				
	<u>2000</u>	<u>2001</u>	<u>2002</u>	<u>2003</u>	<u>2004</u>
<u>Business</u>					
Accounting					
M.S. in Accountancy	7	13	4	19	21
B.S./MPA in Accountancy	--	--	--	8	18
Dean of Business					
Master of Business Administration	55	72	65	66	59
College Total	62	85	69	93	98
<u>Education</u>					
Curriculum and Instruction					
M.S. in Instructional Technology and Design	--	--	--	1	2
M.S. and M.S.Ed. in Curriculum and Instruction	19	42	17	51	28
M.S.Ed. in Reading	43	40	31	57	39
Educational Administration & Found.					
M.S. and M.S.Ed. in Educational Administration	67	73	64	58	58
Special Education					
M.S. and M.S.Ed. in Special Education	45	43	30	23	21
College Total	174	198	142	190	148
<u>Fine Arts</u>					
Dean of Fine Arts					
M.S. in Arts Technology	--	2	3	6	6
School of Art					
M.A. and M.S. in Art	3	6	4	6	6
MFA in Art	3	4	10	9	4
School of Music					
Master of Music	18	14	15	16	23
Master of Music Education	6	9	6	4	4
School of Theatre					
M.A. and M.S. in Theatre	3	1	3	10	3
M.F.A. in Theatre	7	11	7	13	6
College Total	40	47	48	64	52
<u>Mennonite College of Nursing</u>					
Nursing					
M.S. in Nursing	17	13	14	12	5
College Total	17	13	14	12	5
Masters Total					
	657	670	644	710	678
<u>College/Department/Major</u>	Certificate				
	<u>2000</u>	<u>2001</u>	<u>2002</u>	<u>2003</u>	<u>2004</u>
<u>English</u>					
English					
Teaching English Writing High/Mid School (PBC)	--	--	--	1	--
Psychology					
Specialist in School Psychology	6	4	6	7	6
<u>Education</u>					
Educational Administration & Found.					
C.A.S. in Educational Administration	4	--	1	--	--
<u>Mennonite College of Nursing</u>					
Nursing					
P-MST Family Nurse Practitioner Certificate	2	1	--	--	1
Certificate Total	12	5	7	8	7

Degrees Conferred by College, Level, Department and Major
Fiscal Years 2000 through 2004

College/Department/Major	Doctoral				
	2000	2001	2002	2003	2004
<u>Arts and Sciences</u>					
Biological Sciences					
Ph.D. in Biological Sciences	4	2	2	2	--
English					
Ph.D. in English Studies	5	2	4	1	10
History					
D.A. in History	6	4	1	3	--
Mathematics					
D.A. in Mathematics	--	--	--	1	7
Ph.D. in Mathematics Education	--	6	4	8	--
Psychology					
Ph.D. in School Psychology	3	2	4	5	1
College Total	18	16	15	20	18
<u>Education</u>					
Curriculum and Instruction					
Ed.D. in Curriculum and Instruction	8	4	9	3	9
Educational Administration & Found.					
Ed.D. and Ph.D. in Educational Administration	16	11	28	28	12
Special Education					
Ed.D. in Special Education	--	1	--	4	4
College Total	24	16	37	35	25
<u>Fine Arts</u>					
School of Art					
Ed.D. in Art Education	1	--	--	--	--
Doctoral Total	43	32	52	55	43
University Degree Total	4,782	4,748	4,882	4,975	4,876

Graduate Certificates¹ Awarded by College, Department and Program
Fiscal Years 2000 through 2004

Applied Science & Technology	Graduate Certificates ¹ Awarded				
	2000	2001	2002	2003	2004
Technology					
Technology/Project Management (GC) ¹	--	--	--	7	10
Technology (GC) ¹	--	--	--	1	--
Technology/Train & Develop (GC) ¹	--	--	--	2	3
<u>Applied Science & Technology Total</u>	--	--	--	10	13
<u>Arts and Sciences</u>					
Dean of Arts and Sciences					
Women's Studies (GC) ¹	--	--	--	2	2
<u>Arts and Sciences Total</u>	--	--	--	2	2
Graduate Certificate¹ Total	--	--	--	12	15

¹ GC - Graduate Certificate - 9 to 17 hours beyond bachelor's degree (this type of program is not reviewed/approved by the IBHE).

Degrees Conferred by College, Level, and Racial/Ethnic Designation
Fiscal Year 2004

	Amer. Indian/ Alaskan Native		Black Non-Hispanic		Asian/Pacific Islander		Hispanic		Not Reported		White/ Non-Hispanic		Non-Resident Alien		Total		
	M	F	M	F	M	F	M	F	M	F	M	F	M	F	M	F	
Baccalaureate																	
Applied Science & Technology	--	2	22	30	9	5	14	5	1	--	469	379	5	6	520	427	947
Arts and Sciences	1	5	33	51	8	9	8	28	1	1	477	724	6	7	534	825	1,359
Business	4	--	15	20	9	8	12	7	--	--	440	311	3	3	483	349	832
Education	--	2	--	17	1	7	2	9	--	--	51	590	--	1	54	626	680
Fine Arts	1	--	3	4	3	3	3	1	--	--	61	105	--	2	71	115	186
Mennonite College of Nursing	--	--	--	2	--	1	--	--	--	--	6	77	--	--	6	80	86
Other	--	--	4	3	--	--	--	2	--	--	15	34	--	--	19	39	58
Total	6	9	77	127	30	33	39	52	2	1	1,519	2,220	14	19	1,687	2,461	4,148
Masters																	
Applied Science & Technology	--	--	3	3	1	--	--	2	--	--	27	60	20	14	51	79	130
Arts and Sciences	--	--	2	6	--	1	1	1	--	--	60	135	16	23	79	166	245
Business	--	1	1	1	1	2	--	--	--	--	37	34	12	9	51	47	98
Education	--	--	2	3	--	3	--	1	--	--	30	106	1	2	33	115	148
Fine Arts	--	--	--	--	--	1	--	--	--	--	18	24	2	7	20	32	52
Mennonite College of Nursing	--	--	--	--	--	--	--	--	--	--	--	5	--	--	5	5	5
Total	--	1	8	13	2	7	1	4	--	--	172	364	51	55	234	444	678
Certificate																	
Arts and Sciences	--	--	1	--	--	--	--	--	--	--	--	5	--	--	1	5	6
Mennonite College of Nursing	--	--	--	--	--	--	--	--	--	--	--	1	--	--	1	1	1
Total	--	--	1	--	--	--	--	--	--	--	--	6	--	--	1	6	7
Doctorate																	
Arts and Sciences	--	--	1	3	--	--	--	--	--	--	2	10	1	1	4	14	18
Education	--	--	1	1	--	--	1	--	--	--	5	12	1	4	8	17	25
Total	--	--	2	4	--	--	1	--	--	--	7	22	2	5	12	31	43
Total Degrees																	
Applied Science & Technology	--	2	25	33	10	5	14	7	1	--	496	439	25	20	571	506	1,077
Arts and Sciences	1	5	37	60	8	10	9	29	1	1	539	874	23	31	618	1,010	1,628
Business	4	1	16	21	10	10	12	7	--	--	477	345	15	12	534	396	930
Education	--	2	3	21	1	10	3	10	--	--	86	708	2	7	95	758	853
Fine Arts	1	--	3	4	3	4	3	1	--	--	79	129	2	9	91	147	238
Mennonite College of Nursing	--	--	--	2	--	1	--	--	--	--	6	83	--	--	6	86	92
Other	--	--	4	3	--	--	--	2	--	--	15	34	--	--	19	39	58
Total	6	10	88	144	32	40	41	56	2	1	1,698	2,612	67	79	1,934	2,942	4,876

Graduate Certificates¹ Awarded by College and Racial/Ethnic Designation
Fiscal Year 2004

	Amer. Indian/ Alaskan Native		Black Non-Hispanic		Asian/Pacific Islander		Hispanic		Not Reported		White/ Non-Hispanic		Non-Resident Alien		Total		
	M	F	M	F	M	F	M	F	M	F	M	F	M	F	M	F	
Graduate Certificates Awarded																	
Applied Science & Technology	--	--	--	2	--	--	--	--	--	--	6	1	2	2	8	5	13
Arts and Sciences	--	--	--	--	--	--	--	--	--	--	--	2	--	--	--	2	2
Graduate Certificate ¹ Total	--	--	--	2	--	--	--	--	--	--	6	3	2	2	8	7	15

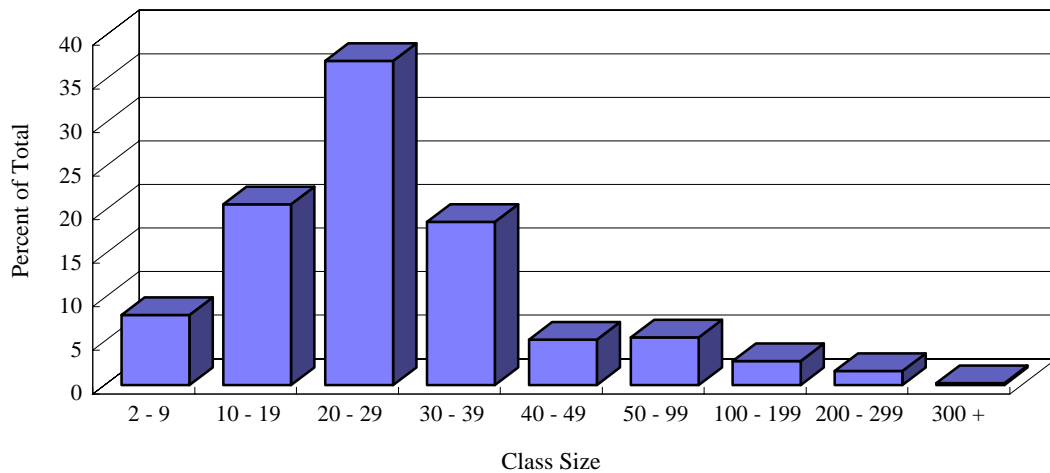
¹ Graduate Certificate - 9-17 hours beyond bachelors' degree (this type of program is not reviewed/approved by the IBHE).

Class Size Distribution¹ for Courses with Undergraduate Students
Fall 2001 through Fall 2004

Class Size	Fall 2001			Fall 2002			Fall 2003			Fall 2004		
	N	Pct.	Cum. Pct.	N	Pct.	Cum. Pct.	N	Pct.	Cum. Pct.	N	Pct.	Cum. Pct.
2 - 9	221	8.5	8.5	233	9.3	9.3	194	8.0	8.0	195	8.1	8.1
10 - 19	548	21.1	29.6	499	19.9	29.3	486	19.9	27.9	502	20.8	28.8
20 - 29	967	37.2	66.8	903	36.1	65.3	940	38.6	66.4	900	37.2	66.0
30 - 39	469	18.1	84.9	451	18.0	83.4	414	17.0	83.4	453	18.7	84.7
40 - 49	154	5.9	90.8	146	5.8	89.2	151	6.2	89.6	126	5.2	90.0
50 - 99	146	5.6	96.4	162	6.5	95.7	151	6.2	95.8	132	5.5	95.4
100 - 199	57	2.2	98.6	71	2.8	98.5	55	2.3	98.1	67	2.8	98.2
200 - 299	29	1.1	99.7	33	1.3	99.8	39	1.6	99.7	39	1.6	99.8
300 +	7	0.3	100.0	4	0.2	100.0	8	0.3	100.0	5	0.2	100.0
Total	2,598	100.0	100.0	2,502	100.0	100.0	2,438	100.0	100.0	2,419	100.0	100.0

Educating Illinois 2003-2010 contains the goal to increase the percentage of small classes (enrollments under 20) from 29 percent to 36 percent while maintaining an appropriate balance of larger classes. Presently, 29 percent of the course offering enrollments at Illinois State University are in small classes.

Class Size Distribution¹ Fall 2004

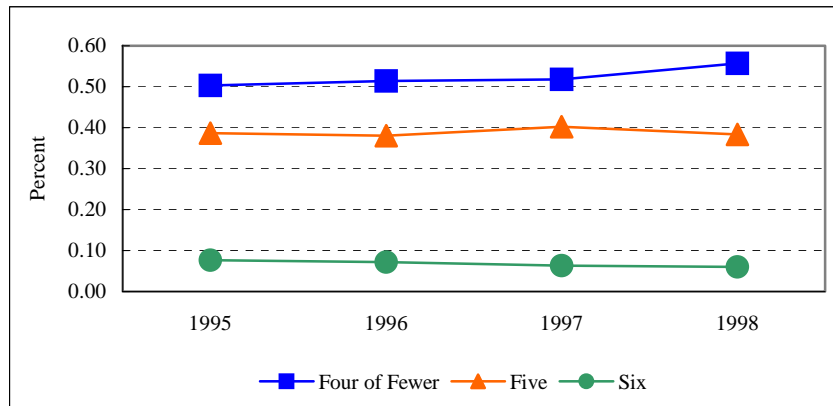


¹ Breakdowns are based on *U.S. News and World Report* definition.

Time-to-Degree of Baccalaureate Degree Recipients
 New Beginning Freshmen Cohort
 Fall 1995 through Fall 1999

	Graduated from Fall Cohort				
	1995	1996	1997	1998	1999
Number of Degree Recipients	1,702	1,703	1,964	1,701	1,824
	Time-to-Degree for those who Graduated from Fall Cohort				
	1995	1996	1997	1998	1999
Three or Fewer Years	0.9%	0.5%	0.6%	0.5%	0.4%
Four Years	49.4%	50.9%	51.3%	55.2%	60.6%
Five Years	38.7%	38.1%	40.2%	38.3%	39.0%
Six Years	7.6%	7.2%	6.4%	6.0%	--
Seven Years	2.1%	2.3%	1.6%	--	--
Eight Years	0.9%	1.0%	--	--	--
Nine Years	0.5%	--	--	--	--
	100.0%	100.0%	100.0%	100.0%	100.0%

Time-to Degree



Educating Illinois 2003-2010 contains a goal for the University to decrease the average time to degree of degree seeking freshmen maintaining continuous enrollment from four years and one semester to four years. The 1998 average time to degree decreased to 4.5 years for the 1998 cohort from 4.6 years for the 1997 cohort. For native undergraduate students (Fall cohort 1998) who graduated from Illinois State University, 56 percent finished their degree in four years or less. An additional 38 percent graduated in the fifth year, and 6 percent graduated in the sixth year.

Persistence (Percent) of Freshmen Cohorts by Elapsed Session and Academic Years

Freshman Fall Cohort - All Students											
Initial Population	<u>1994</u>	<u>1995</u>	<u>1996</u>	<u>1997</u>	<u>1998</u>	<u>1999</u>	<u>2000</u>	<u>2001</u>	<u>2002</u>	<u>2003</u>	<u>2004</u>
1st Fall	2,400	2,967	2,896	3,272	2,749	3,080	3,265	3,340	3,108	3,097	2,834
Spring	93.2	92.6	93.3	93.3	94.1	94.2	93.1	93.3	94.3	95.1	-
2nd Fall	73.4	73.5	74.6	75.9	78.6	78.8	79.5	79.7	82.6	83.6	-
Spring	68.8	68.4	68.1	70.6	73.0	73.2	75.2	75.5	78.8	-	-
3rd Fall	63.5	63.1	63.5	66.5	68.6	69.4	71.6	71.6	75.7	-	-
Spring	61.8	62.0	62.5	64.9	67.1	67.9	70.4	70.2	-	-	-
4th Fall	60.7	60.0	61.6	63.8	66.0	66.7	68.1	68.6	-	-	-
Spring	58.8	57.2	58.9	61.0	63.9	64.6	65.8	-	-	-	-
5th Fall	29.3	28.7	28.9	30.0	29.8	28.5	28.4	-	-	-	-
Spring	18.4	17.1	17.4	17.3	17.2	16.1	-	-	-	-	-
6th Fall	5.8	5.6	5.9	5.0	4.9	5.2	-	-	-	-	-
Spring	3.8	3.6	3.5	2.7	2.6	-	-	-	-	-	-

Freshman Fall Cohort - All Male Students											
Initial Population	<u>1994</u>	<u>1995</u>	<u>1996</u>	<u>1997</u>	<u>1998</u>	<u>1999</u>	<u>2000</u>	<u>2001</u>	<u>2002</u>	<u>2003</u>	<u>2004</u>
1st Fall	964	1,163	1,099	1,281	1,016	1,169	1,260	1,255	1,169	1,160	1,090
Spring	93.8	92.5	92.9	94.0	94.5	94.2	93.5	93.5	94.4	95.9	-
2nd Fall	72.8	72.0	73.0	73.5	77.6	76.7	77.1	77.1	82.7	83.2	-
Spring	67.5	66.0	65.2	66.5	71.5	69.7	72.9	72.2	77.2	-	-
3rd Fall	62.6	60.0	60.8	62.4	66.7	64.8	69.0	68.0	74.2	-	-
Spring	59.8	58.0	60.1	59.4	65.6	63.5	68.2	66.5	-	-	-
4th Fall	57.8	55.6	58.4	58.7	64.1	63.1	65.9	64.4	-	-	-
Spring	56.1	54.0	56.6	56.8	62.4	61.2	63.5	-	-	-	-
5th Fall	32.2	31.3	33.1	33.3	34.8	34.6	34.6	-	-	-	-
Spring	22.6	20.1	23.0	21.3	22.1	20.3	-	-	-	-	-
6th Fall	7.8	6.7	8.2	6.7	7.6	7.6	-	-	-	-	-
Spring	5.0	4.6	4.7	4.0	3.6	-	-	-	-	-	-

Freshman Fall Cohort - All Female Students											
Initial Population	<u>1994</u>	<u>1995</u>	<u>1996</u>	<u>1997</u>	<u>1998</u>	<u>1999</u>	<u>2000</u>	<u>2001</u>	<u>2002</u>	<u>2003</u>	<u>2004</u>
1st Fall	1,436	1,804	1,797	1,991	1,733	1,911	2,005	2,085	1,939	1,937	1,744
Spring	92.8	92.6	93.5	92.9	93.9	94.1	92.9	93.2	94.2	94.7	-
2nd Fall	73.7	74.5	75.6	77.4	79.3	80.0	81.0	81.2	82.5	83.9	-
Spring	69.6	69.8	69.9	73.3	73.9	75.4	76.7	77.5	79.7	-	-
3rd Fall	64.1	65.0	65.2	69.2	69.8	72.3	73.2	73.7	76.6	-	-
Spring	63.2	64.7	64.1	68.4	68.0	70.6	71.8	72.5	-	-	-
4th Fall	62.6	62.9	63.6	67.1	67.1	68.9	69.4	71.2	-	-	-
Spring	60.7	59.3	60.4	63.7	64.8	66.6	67.3	-	-	-	-
5th Fall	27.4	27.1	26.3	27.9	26.9	24.8	24.5	-	-	-	-
Spring	15.6	15.1	14.0	14.8	14.3	13.6	-	-	-	-	-
6th Fall	4.4	4.9	4.5	3.8	3.4	3.8	-	-	-	-	-
Spring	3.0	2.9	2.7	1.9	2.0	-	-	-	-	-	-

Persistence (Percent) of Freshmen Cohorts by Elapsed Session and Academic Years

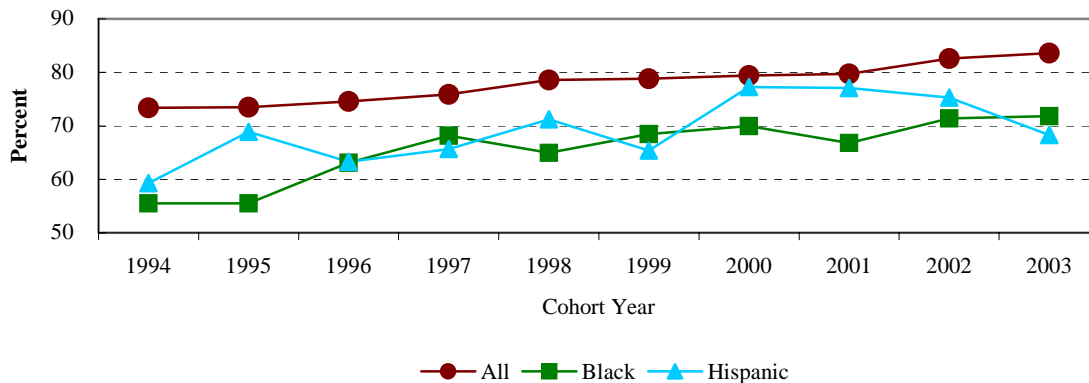
Freshman Fall Cohort - Black Non-Hispanic Students

Initial Population	1994	1995	1996	1997	1998	1999	2000	2001	2002	2003	2004
1st Fall	308	355	325	355	314	219	210	217	175	248	219
Spring	92.9	95.5	92.6	93.8	95.2	95.0	93.8	95.4	98.3	91.9	-
2nd Fall	55.5	55.5	63.1	68.2	65.0	68.5	70.0	66.8	71.4	71.8	-
Spring	51.0	51.5	52.9	59.7	55.4	56.6	67.6	61.8	65.1	-	-
3rd Fall	45.8	43.1	47.1	53.8	48.4	49.8	63.8	56.7	61.1	-	-
Spring	44.8	42.0	43.7	52.1	47.5	47.0	61.4	55.3	-	-	-
4th Fall	44.8	41.1	42.5	51.0	47.1	47.5	59.0	55.3	-	-	-
Spring	44.2	38.3	40.9	49.9	47.1	45.7	58.6	-	-	-	-
5th Fall	31.2	27.3	27.4	32.7	30.9	27.4	33.3	-	-	-	-
Spring	24.0	20.8	16.6	23.1	18.8	19.6	-	-	-	-	-
6th Fall	8.8	8.2	7.4	6.8	7.6	5.0	-	-	-	-	-
Spring	5.5	3.4	4.6	3.7	4.5	-	-	-	-	-	-

Freshman Fall Cohort - Hispanic Students

Initial Population	1994	1995	1996	1997	1998	1999	2000	2001	2002	2003	2004
1st Fall	54	74	79	99	80	78	66	96	97	126	97
Spring	88.9	87.8	87.3	91.9	91.3	93.6	95.5	96.9	95.9	88.9	-
2nd Fall	59.3	68.9	63.3	65.7	71.3	65.4	77.3	77.1	75.3	68.3	-
Spring	57.4	60.8	49.4	59.6	58.8	57.7	68.2	71.9	62.9	-	-
3rd Fall	57.4	58.1	44.3	52.5	55.0	46.2	62.1	64.6	58.8	-	-
Spring	57.4	54.1	45.6	49.5	50.0	43.6	56.1	63.5	-	-	-
4th Fall	57.4	55.4	44.3	48.5	46.3	44.9	57.6	60.4	-	-	-
Spring	57.4	50.0	41.8	47.5	46.3	44.9	54.5	-	-	-	-
5th Fall	24.1	25.7	22.8	29.3	30.0	25.6	27.3	-	-	-	-
Spring	14.8	17.6	16.5	19.2	20.0	15.4	-	-	-	-	-
6th Fall	1.9	5.4	6.3	6.1	5.0	10.3	-	-	-	-	-
Spring	-	5.4	3.8	4.0	2.5	-	-	-	-	-	-

Persistence of Freshmen Cohort



Educating Illinois 2003-2010 set a fall-to-fall retention rate goal for new beginning freshmen of 88 percent. The current rate for fall 2003 freshmen is 83.6 percent.

Educating Illinois 2003-2010 also contains goals to increase minority freshmen retention rates to levels more comparable with non-minority students. The difference between minority and white non-hispanic retention rates increased from 8.3 percent to 12.1 percent.

Graduation (Cumulative Percent) of Freshmen Cohorts by Elapsed Sessions and Academic Years

		Freshman Fall Cohort - All Students										
		<u>1994</u>	<u>1995</u>	<u>1996</u>	<u>1997</u>	<u>1998</u>	<u>1999</u>	<u>2000</u>	<u>2001</u>	<u>2002</u>	<u>2003</u>	<u>2004</u>
<i>Initial Population</i>		2,400	2,967	2,896	3,272	2,749	3,080	3,265	3,340	3,108	3,097	2,834
3rd	Summer	0.4	0.5	0.3	0.3	0.3	0.2	0.1	0.3	-		
	Fall	1.3	1.9	2.0	1.9	1.4	1.3	1.4	-			
	Spring	22.5	23.1	24.8	25.4	28.8	31.0	31.8	-			
4th	Summer	27.5	28.9	30.4	31.1	34.4	36.1	36.9	-			
	Fall	37.9	39.9	41.5	43.1	46.2	47.5	-				
	Spring	48.0	49.2	50.9	53.3	56.6	57.9	-				
5th	Summer	50.3	51.2	52.9	55.3	58.2	59.2	-				
	Fall	52.5	53.3	55.4	57.6	60.6	-					
	Spring	54.1	55.1	56.9	58.7	61.6	-					
6th	Summer	54.5	55.6	57.2	59.1	61.9	-					

		Freshman Fall Cohort - All Male Students										
		<u>1994</u>	<u>1995</u>	<u>1996</u>	<u>1997</u>	<u>1998</u>	<u>1999</u>	<u>2000</u>	<u>2001</u>	<u>2002</u>	<u>2003</u>	<u>2004</u>
<i>Initial Population</i>		964	1,163	1,099	1,281	1,016	1,169	1,260	1,255	1,169	1,160	1,090
3rd	Summer	0.5	0.4	0.2	0.1	-	0.3	0.2	0.2	-		
	Fall	1.0	1.3	0.7	1.3	0.5	1.1	1.1	-			
	Spring	16.5	16.2	16.6	18.2	22.0	21.8	23.3	-			
4th	Summer	21.3	21.4	22.4	23.2	27.2	26.4	27.5	-			
	Fall	29.9	31.5	33.3	34.0	38.6	38.8	-				
	Spring	41.3	42.0	44.9	45.6	50.6	50.6	-				
5th	Summer	44.5	44.7	47.4	47.9	52.1	52.4	-				
	Fall	47.4	46.9	51.0	51.1	55.8	-					
	Spring	49.4	49.1	53.1	52.7	57.1	-					
6th	Summer	50.2	49.9	53.4	53.2	57.5	-					

		Freshman Fall Cohort - All Female Students										
		<u>1994</u>	<u>1995</u>	<u>1996</u>	<u>1997</u>	<u>1998</u>	<u>1999</u>	<u>2000</u>	<u>2001</u>	<u>2002</u>	<u>2003</u>	<u>2004</u>
<i>Initial Population</i>		1,436	1,804	1,797	1,991	1,733	1,911	2,005	2,085	1,939	1,937	1,744
3rd	Summer	0.3	0.6	0.4	0.5	0.5	0.2	0.1	0.4	-		
	Fall	1.4	2.3	2.7	2.2	2.0	1.4	1.6	-			
	Spring	26.5	27.6	29.8	30.0	32.8	36.6	37.1	-			
4th	Summer	31.6	33.8	35.2	36.2	38.7	42.0	42.8	-			
	Fall	43.3	45.3	46.5	48.9	50.6	52.9	-				
	Spring	52.4	53.8	54.6	58.3	60.1	62.3	-				
5th	Summer	54.2	55.3	56.2	60.0	61.7	63.4	-				
	Fall	55.9	57.4	58.0	61.7	63.5	-					
	Spring	57.3	58.9	59.2	62.5	64.3	-					
6th	Summer	57.5	59.3	59.5	62.8	64.5	-					

Graduation (Cumulative Percent) of Freshmen Cohorts by Elapsed Sessions and Academic Years

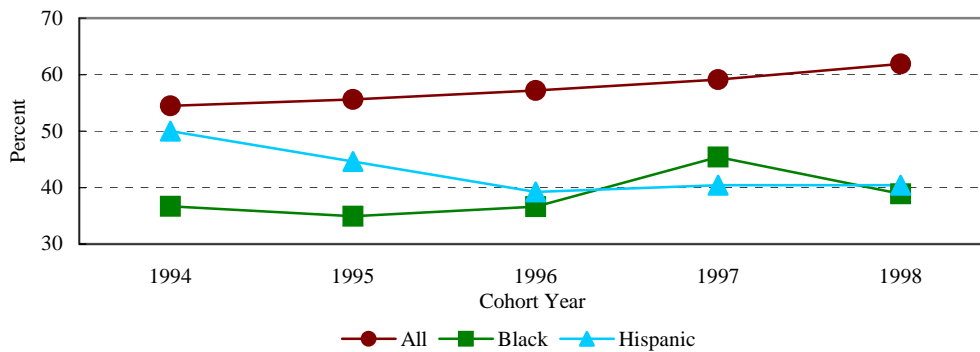
Freshman Fall Cohort - Black Non-Hispanic Students

	1994	1995	1996	1997	1998	1999	2000	2001	2002	2003	2004
<i>Initial Population</i>	308	355	325	355	314	219	210	217	175	248	219
3rd Summer	-	-	-	-	-	-	-	0.5	-		
Fall	-	0.6	-	-	-	0.9	1.4	-			
Spring	6.5	7.6	10.2	11.5	9.9	14.2	19.0	-			
4th Summer	10.1	11.8	14.2	15.8	14.6	18.3	23.8	-			
Fall	16.6	17.5	22.8	23.7	23.6	26.0	-				
Spring	26.9	26.5	28.6	37.2	33.4	36.5	-				
5th Summer	30.2	27.9	31.7	40.6	35.4	38.8	-				
Fall	32.5	32.1	34.5	43.1	38.5	-					
Spring	35.7	34.4	36.3	44.8	38.9	-					
6th Summer	36.7	34.9	36.6	45.4	38.9	-					

Freshman Fall Cohort - Hispanic Students

	1994	1995	1996	1997	1998	1999	2000	2001	2002	2003	2004
<i>Initial Population</i>	54	74	79	99	80	78	66	96	97	126	97
3rd Summer	-	2.7	-	-	-	-	-	-	-		
Fall	-	2.7	2.5	1.0	-	-	3.0	-			
Spring	16.7	10.8	11.4	12.1	8.8	10.3	27.3	-			
4th Summer	25.9	21.6	17.7	16.2	12.5	14.1	28.8	-			
Fall	31.5	31.1	25.3	26.3	23.8	20.5	-				
Spring	40.7	37.8	34.2	36.4	37.5	29.5	-				
5th Summer	48.1	40.5	36.7	37.4	37.5	32.1	-				
Fall	50.0	43.2	38.0	39.4	38.8	-					
Spring	50.0	44.6	39.2	40.4	40.0	-					
6th Summer	50.0	44.6	39.2	40.4	40.0	-					

Graduation Rate



Educating Illinois 2003-2010 contains a goal to increase the University's six year graduation rate from 60 percent to 67 percent. The current rate is 62 percent.

Educating Illinois 2003-2010 also challenges the University to increase the graduation rate of minority students to levels more comparable with non-minority students. The difference between minority and white non-hispanic graduation rates increased from 25.8 percent to 34.2 percent.

For native undergraduate students in the 1998 cohort who graduated from Illinois State University 56 percent finished their degree in four years. An additional 38 percent graduated in the fifth year and 6 percent graduated in the sixth year.

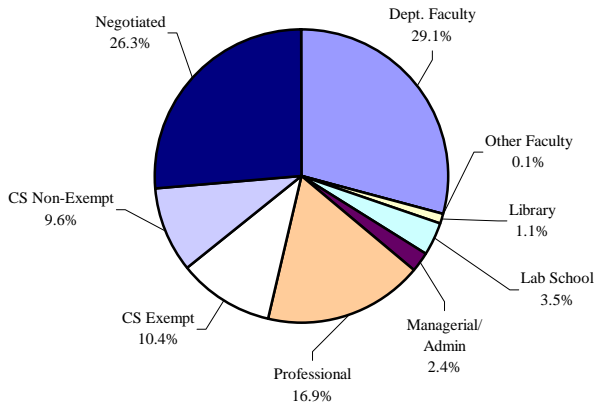


*Faculty/Staff
Information*

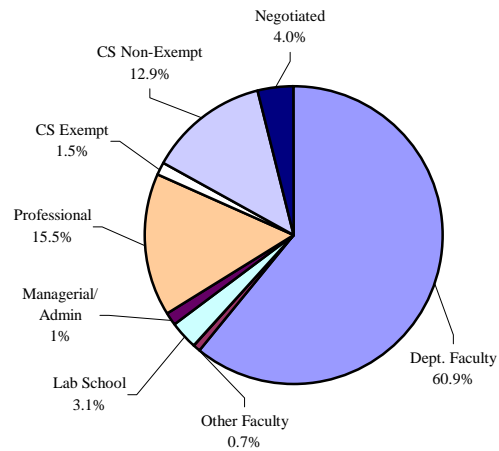
University Staff
Number and Full-Time Equivalence (FTE)
by Employee Category
Fall 2004

	Full-Time	Part-Time		Total	
	Number	Number	FTE	Number	FTE
Departmental Faculty ¹	831	257	94.2	1,088	925.2
Non-Departmental Faculty	3	3	1.1	6	4.1
Library Faculty	30	--	--	30	30.0
Lab School Faculty	101	7	4.8	108	105.8
Managerial/Administrative	65	3	2.1	68	67.1
Professional	501	45	24.0	546	525.0
Civil Service					
Civil Service Exempt	298	3	2.3	301	300.3
Civil Service Non-Exempt	274	31	20.0	305	294.0
Negotiated	<u>750</u>	<u>9</u>	<u>6.2</u>	<u>759</u>	<u>756.2</u>
Civil Service Total	1,322	43	28.5	1,365	1,350.5
University Total	2,853	358	154.7	3,211	3,007.7
Civil Service Extra-Help	--			--	--
Graduate Assistants	--			--	--

Full-Time Staff



Part-Time FTE Staff



¹ Includes Department Chairs and part-time faculty whose major university appointment is Administrative/Professional or Civil Service.

University Staffing by Employee Type, Gender and Racial/Ethnic Designation
Fall Terms 2002 through 2004

Fall 2004	Faculty				Administrative/ Professional	Civil Service	Total
	Departmental	Non-Dept.	Library	Lab School			
<u>Gender</u>							
Male	579	1	9	33	278	612	1,512
Female	509	5	21	75	336	753	1,699
<u>Racial/Ethnic Designation</u>							
Amer. Indian/Alaskan Native	4	--	--	--	1	9	14
Black/Non-Hispanic	28	--	--	6	47	84	165
Asian/Pacific Islander	53	--	--	1	12	10	76
Hispanic	18	--	--	1	8	28	55
White/Non-Hispanic	952	6	30	100	527	1,233	2,848
Non-Resident Alien	29	--	--	--	17	1	47
Unknown	4	--	--	--	2	--	6
Total	1,088	6	30	108	614	1,365	3,211
Fall 2003	Faculty				Administrative/ Professional	Civil Service	Total
	Departmental	Non-Dept.	Library	Lab School			
<u>Gender</u>							
Male	593	3	10	35	285	638	1,564
Female	491	5	21	72	344	807	1,740
<u>Racial/Ethnic Designation</u>							
Amer. Indian/Alaskan Native	3	--	--	--	1	7	11
Black/Non-Hispanic	29	--	--	4	55	94	182
Asian/Pacific Islander	51	--	--	1	8	10	70
Hispanic	14	--	--	1	9	29	53
White/Non-Hispanic	955	8	31	101	538	1,304	2,937
Non-Resident Alien	30	--	--	--	14	1	45
Unknown	2	--	--	--	4	--	6
Total	1,084	8	31	107	629	1,445	3,304
Fall 2002	Faculty				Administrative/ Professional	Civil Service	Total
	Departmental	Non-Dept.	Library	Lab School			
<u>Gender</u>							
Male	590	3	8	33	291	680	1,605
Female	511	5	21	79	357	863	1,836
<u>Racial/Ethnic Designation</u>							
Amer. Indian/Alaskan Native	3	--	--	--	1	9	13
Black/Non-Hispanic	29	--	--	4	56	103	192
Asian/Pacific Islander	56	--	--	1	11	10	78
Hispanic	13	1	--	1	7	30	52
White/Non-Hispanic	972	7	29	106	557	1,389	3,060
Non-Resident Alien	27	--	--	--	3	1	31
Unknown	1	--	--	--	13	1	15
Total	1,101	8	29	112	648	1,543	3,441

Educating Illinois 2003-2010 commits Illinois State University to achieving and maintaining a diverse faculty and staff profile that reflects appropriate labor force availability as documented in the University's annual *Affirmative Action Plans*. These *Plans* are available from the Office of Diversity and Affirmative Action.

Departmental Faculty
By Tenure Status, Appointment, Gender and Racial/Ethnic Designation
Fall 2000 through 2004

<u>Departmental Faculty</u>	<u>Fall Term</u>				
	<u>2000</u>	<u>2001</u>	<u>2002</u>	<u>2003</u>	<u>2004</u>
Tenure Status					
Tenure/Tenure-Track	692	692	699	705	709
Non-Tenure-Track	434	457	402	379	379
Total Departmental Faculty	1,126	1,149	1,101	1,084	1,088
Appointment					
Full-Time	855	865	847	846	831
Part-Time	271	284	254	238	257
Gender					
Male	616	620	590	593	579
Female	510	529	511	491	509
Racial/Ethnic Designation					
American Indian/Alaskan Native	2	4	3	3	4
Black/Non-Hispanic	38	36	29	29	28
Asian/Pacific Islander	48	54	56	51	53
Hispanic	16	16	13	14	18
White/Non-Hispanic	1,002	1,014	972	955	951
Non-Resident Alien	20	25	27	30	29
Unknown	--	--	1	2	5
<u>Tenure/Tenure-Track</u>					
Full-Time	686	689	697	702	707
Part-Time	6	3	2	3	2
Gender					
Male	443	439	432	438	433
Female	249	253	267	267	276
Racial/Ethnic Designation					
American Indian/Alaskan Native	1	2	3	3	2
Black/Non-Hispanic	25	27	25	24	22
Asian/Pacific Islander	38	43	45	43	42
Hispanic	12	11	10	11	14
White/Non-Hispanic	598	592	593	597	602
Non-Resident Alien	18	17	23	27	27
<u>Non-Tenure-Track</u>					
Full-Time	169	176	150	144	124
Part-Time	265	281	252	235	255
Gender					
Male	173	181	158	155	146
Female	261	276	244	224	233
Racial/Ethnic Designation					
American Indian/Alaskan Native	1	2	--	--	2
Black/Non-Hispanic	13	9	4	5	6
Asian/Pacific Islander	10	11	11	8	11
Hispanic	4	5	3	3	4
White/Non-Hispanic	404	422	379	358	349
Non-Resident Alien	2	8	4	3	2
Unknown	--	--	1	2	5

Departmental Faculty
By College, Department and Percent Appointment
Fall 2000 through 2004

<u>College/Department</u>	<u>2000</u>		<u>2001</u>		<u>2002</u>		<u>2003</u>		<u>2004</u>	
	<u>Full</u>	<u>Part</u>	<u>Full</u>	<u>Part</u>	<u>Full</u>	<u>Part</u>	<u>Full</u>	<u>Part</u>	<u>Full</u>	<u>Part</u>
<u>Applied Science and Technology</u>										
Agriculture	12	5	11	6	11	5	13	3	13	4
School of Information Technology	21	14	22	13	24	9	24	12	22	7
Criminal Justice Sciences	13	5	13	6	12	5	12	8	12	8
School of Kinesiology & Recreation	29	12	30	10	31	8	29	6	29	13
Health Sciences	20	6	19	7	17	6	19	1	19	3
Family and Consumer Sciences	14	9	14	9	16	7	15	9	16	8
Technology	17	1	18	3	18	7	19	5	20	4
Applied Science and Technology Total	126	52	127	54	129	47	131	44	131	47
<u>Arts and Sciences</u>										
Biological Sciences	30	5	30	4	28	5	30	3	29	5
Chemistry	20	3	21	4	20	4	23	1	22	5
Economics	18	1	17	1	16	2	18	--	15	2
English	66	8	66	8	56	13	54	9	54	8
Foreign Languages	26	5	28	6	26	6	26	4	24	3
Geography-Geology	15	3	13	3	15	1	15	--	14	--
History	29	13	27	11	29	18	29	13	28	14
Communication	37	7	42	6	39	2	35	7	35	6
Mathematics	50	6	51	9	49	8	48	8	49	7
Philosophy	13	2	12	--	13	2	14	1	13	1
Physics	10	2	12	1	12	1	13	1	13	--
Politics and Government	21	10	22	9	18	14	18	14	18	16
Psychology	36	11	35	9	35	10	37	6	39	5
School of Social Work	14	7	17	9	17	6	15	1	10	6
Sociology & Anthropology	24	6	25	5	26	3	24	7	24	10
Speech Path. & Audiology	11	--	11	--	7	1	6	5	6	2
Arts and Sciences Total	420	89	429	85	406	96	405	80	393	90
<u>Business</u>										
Accounting	22	9	23	4	21	5	24	7	23	5
Finance, Insurance and Law	20	6	21	3	21	5	22	3	21	4
Mgt. & Quant. Methods	31	7	31	10	30	6	30	6	29	4
Marketing	17	7	17	7	19	3	18	2	20	1
Business Total	90	29	92	24	91	19	94	18	93	14
<u>Education</u>										
Curriculum and Instruction	43	54	41	78	45	48	44	56	36	59
Educ. Admin. & Foundation	22	5	21	8	21	3	19	6	22	11
Special Education	33	12	31	12	32	11	33	15	29	13
Education Total	98	71	93	98	98	62	96	77	87	83
<u>Fine Arts</u>										
School of Art	40	10	40	7	39	10	35	7	37	6
School of Music	40	1	40	1	40	4	40	3	43	2
School of Theatre	26	7	27	6	26	5	28	3	29	3
Fine Arts Total	106	18	107	14	105	19	103	13	109	11
<u>Mennonite College of Nursing</u>										
Nursing	15	12	17	9	18	11	17	6	18	12

Departmental Faculty
By College, Department, Rank and Percent Appointment
Fall 2004

<u>College/Department</u>	<u>Full-Time</u>					<u>Part-Time</u>		<u>Total</u>	
	<u>Professor</u>	<u>Associate Professor</u>	<u>Assistant Professor</u>	<u>Other</u>	<u>Total</u>	<u>Head-count</u>	<u>FTE</u>	<u>Head-count</u>	<u>FTE</u>
<u>Applied Science and Technology</u>									
Agriculture	5	2	6	--	13	4	1.00	17	14.00
School of Information Technology	6	4	8	4	22	7	2.00	29	24.00
Criminal Justice Sciences	7	--	4	1	12	8	3.00	20	15.00
School of Kinesiology and Recreation	7	3	12	7	29	13	3.48	42	32.48
Health Sciences	2	6	8	3	19	3	0.60	22	19.60
Family and Consumer Sciences	5	2	6	3	16	8	2.98	24	18.98
Technology	7	3	6	4	20	4	1.00	24	21.00
Applied Science and Technology Total	39	20	50	22	131	47	14.06	178	145.06
<u>Arts and Sciences</u>									
Biological Sciences	13	10	5	1	29	5	1.25	34	30.25
Chemistry	7	7	7	1	22	5	3.29	27	25.29
Economics	6	5	3	1	15	2	1.00	17	16.00
English	14	17	14	9	54	8	3.25	62	57.25
Foreign Languages	9	5	6	4	24	3	1.00	27	25.00
Geography-Geology	3	3	8	--	14	--	0.00	14	14.00
History	5	4	13	6	28	14	6.08	42	34.08
Communication	6	9	11	9	35	6	2.66	41	37.66
Mathematics	10	7	13	19	49	7	2.50	56	51.50
Philosophy	6	3	1	3	13	1	0.25	14	13.25
Physics	8	3	1	1	13	--	0.00	13	13.00
Politics and Government	7	5	6	--	18	16	4.85	34	22.85
Psychology	12	12	15	--	39	5	1.24	44	40.24
School of Social Work	1	5	4	--	10	6	1.50	16	11.50
Sociology & Anthropology	8	10	6	--	24	10	4.28	34	28.28
Speech Path. & Audiology	1	2	3	--	6	2	0.50	8	6.50
Arts and Sciences Total	116	107	116	54	393	90	33.65	483	426.65
<u>Business</u>									
Accounting	7	7	6	3	23	5	1.67	28	24.67
Finance, Insurance and Law	11	1	6	3	21	4	1.17	25	22.17
Mgt. & Quant. Methods	13	8	4	4	29	4	2.25	33	31.25
Marketing	7	3	9	1	20	1	0.75	21	20.75
Business Total	38	19	25	11	93	14	5.84	107	98.84
<u>Education</u>									
Curriculum and Instruction	5	5	21	5	36	59	22.54	95	58.54
Educ. Admin. & Foundation	5	5	12	--	22	11	3.95	33	25.95
Special Education	6	6	5	12	29	13	6.79	42	35.79
Education Total	16	16	38	17	87	83	33.28	170	120.28
<u>Fine Arts</u>									
School of Art	5	14	17	1	37	6	1.60	43	38.60
School of Music	12	11	15	5	43	2	0.57	45	43.57
School of Theatre	8	7	10	4	29	3	1.25	32	30.25
Fine Arts Total	25	32	42	10	109	11	3.42	120	112.42
<u>Mennonite College of Nursing</u>									
Nursing	--	3	6	9	18	12	3.98	30	21.98
<u>Total</u>	234	197	277	123	831	257	94.23	1,088	925.23

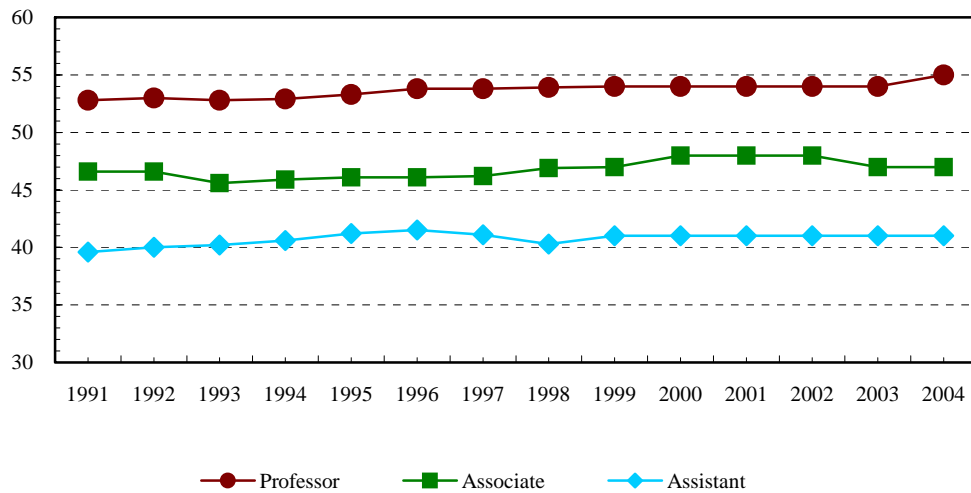
Departmental Faculty
by College, Rank, Gender and Racial/Ethnic Designation
Fall 2004

	American Indian/Alaskan		Black Non-Hispanic		Asian/Pacific Islander		Hispanic		White Non-Hispanic		Non-Resident Alien		Unknown		Total		Grand Total
	Male	Female	Male	Female	Male	Female	Male	Female	Male	Female	Male	Female	Male	Female	Male	Female	
<u>Applied Science & Technology</u>																	
Professor	--	--	--	1	1	2	1	1	25	8	--	--	--	--	27	12	39
Associate Professor	--	1	--	--	2	--	--	--	10	7	--	--	--	--	12	8	20
Assistant Professor	--	--	2	--	1	1	--	--	23	19	3	1	--	--	29	21	50
Unranked	--	--	--	--	--	2	--	1	31	33	--	1	--	1	31	38	69
Total	--	1	2	1	4	5	1	2	89	67	3	2	--	1	99	79	178
<u>Arts and Sciences</u>																	
Professor	--	--	1	--	12	1	1	--	77	23	--	1	--	--	91	25	116
Associate Professor	--	--	3	2	2	1	3	1	56	38	--	1	--	--	64	43	107
Assistant Professor	--	1	4	1	1	1	3	1	45	48	4	7	--	--	57	59	116
Unranked	1	1	--	2	1	7	1	1	65	61	--	--	2	2	70	74	144
Total	1	2	8	5	16	10	8	3	243	170	4	9	2	2	282	201	483
<u>Business</u>																	
Professor	--	--	--	--	6	--	1	--	24	8	--	--	--	--	31	8	39
Associate Professor	--	--	--	--	3	--	--	--	13	3	--	--	--	--	16	3	19
Assistant Professor	--	--	--	--	1	2	--	--	14	5	1	2	--	--	16	9	25
Unranked	--	--	--	1	--	--	1	--	15	7	--	--	--	--	16	8	24
Total	--	--	--	1	10	2	2	--	66	23	1	2	--	--	79	28	107
<u>Education</u>																	
Professor	--	--	--	--	1	--	--	--	10	5	--	--	--	--	11	5	16
Associate Professor	--	--	--	1	1	--	--	--	5	9	--	--	--	--	6	10	16
Assistant Professor	--	--	4	2	--	--	--	1	9	19	3	--	--	--	16	22	38
Unranked	--	--	--	2	--	--	--	--	19	78	--	1	--	--	19	81	100
Total	--	--	4	5	2	--	--	1	43	111	3	1	--	--	52	118	170
<u>Fine Arts</u>																	
Professor	--	--	--	--	1	--	--	--	19	6	--	--	--	--	20	6	26
Associate Professor	--	--	--	1	--	1	--	--	17	12	1	--	--	--	18	14	32
Assistant Professor	--	--	--	--	1	--	--	--	19	19	--	3	--	--	20	22	42
Unranked	--	--	1	--	--	1	--	--	7	11	--	--	--	--	8	12	20
Total	--	--	1	1	2	2	--	--	62	48	1	3	--	--	66	54	120
<u>Nursing</u>																	
Professor	--	--	--	--	--	--	--	--	--	--	--	--	--	--	--	--	--
Associate Professor	--	--	--	--	--	--	--	--	--	3	--	--	--	--	--	3	3
Assistant Professor	--	--	--	--	--	--	--	1	--	5	--	--	--	--	--	6	6
Unranked	--	--	--	--	--	--	--	--	1	20	--	--	--	--	1	20	21
Total	--	--	--	--	--	--	--	1	1	28	--	--	--	--	1	29	30
University Total	1	3	15	13	34	19	11	7	504	447	12	17	2	3	579	509	1,088

Tenure/Tenure Track Departmental Faculty
by Rank and Age¹
Fall 2004

	<u>Professor</u>	<u>Associate Professor</u>	<u>Assistant Professor</u>	<u>Total</u>
29 or Less	--	--	12	12
30 - 34	--	2	50	52
35 - 39	--	27	78	105
40 - 44	18	52	42	112
45 - 49	41	40	39	120
50 - 54	51	43	34	128
55 - 59	66	16	13	95
60 - 64	50	14	6	70
65 or Over	<u>10</u>	<u>3</u>	<u>2</u>	<u>15</u>
Total	236	197	276	709

Average Age



¹ Age is calculated as of December 31st of the reported year.

Departmental Student Full-Time Equivalent/Faculty Full-Time Equivalent Ratio
On-Campus Census Day Fall 2004

<u>Department Number/Name</u>	<u>Full-Time Equivalent¹</u>		<u>Student/</u>
	<u>A</u> Student	<u>B</u> Faculty	<u>Faculty</u> Ratio <u>A/B</u>
412 Biological Sciences	437.1	30.3	14.4
416 Chemistry	147.9	25.3	5.8
420 Economics	140.6	16.0	8.8
424 English	650.0	57.3	11.4
430 Foreign Languages	150.5	25.0	6.0
440 Geography/Geology	84.7	14.0	6.1
442 History	603.4	34.1	17.7
448 Communication	759.8	37.7	20.2
452 Mathematics	468.5	51.5	9.1
454 Philosophy	49.1	13.3	3.7
456 Physics	110.4	13.0	8.5
460 Politics & Government	366.1	22.9	16.0
462 Psychology	572.7	40.2	14.2
465 Social Work	124.0	11.5	10.8
466 Sociology & Anthropology	216.1	28.3	7.6
472 Speech Pathology & Audiology	287.1	6.5	44.2
502 Agriculture	201.7	14.0	14.4
506 Family & Consumer Science	496.1	19.0	26.1
510 Technology	468.2	21.0	22.3
512 Kinesiology & Recreation	771.9	32.5	23.8
515 School of Information Technology	513.7	24.0	21.4
522 Health Sciences	316.7	19.6	16.2
525 Criminal Justice Science	388.3	15.0	25.9
533 Curriculum & Instruction	1,746.0	58.5	29.8
548 Finance, Insurance & Law	424.6	22.2	19.1
552 Accounting	453.4	24.7	18.4
558 Management & Quantitative Methods	1,257.7	31.3	40.2
559 Marketing	672.9	20.8	32.4
562 School of Art	364.6	38.6	9.4
566 School of Music	327.6	43.6	7.5
570 School of Theatre	348.3	30.3	11.5
581 Mennonite College of Nursing	542.9	22.0	24.7
590 Educational Administration & Foundations	96.1	26.0	3.7
591 Special Education	753.6	35.8	21.1
Other*	2,550.6	--	--
Total	17,862.7	925.2	19.3

*Includes: General students (2250.6) + Arts Tech (38.6) + students at large (112.8) + Biochemistry (64.3) + Women's Studies (1.5) + MBA (82.9)

¹ Student FTE = Majors, as of census day, on-campus in the department: undergraduate credit hours/15 + graduate credit hours/12. Faculty FTE = Full-time faculty + percent of appointment of part-time faculty.

Educating Illinois 2003-2010 contains the goal to decrease the University student to faculty ratio from 19:1 to 18:1. Displayed above are the current ratios by school and department.

Retention Percentages of New Full-Time Faculty and Staff
Fall 1996 through Fall 2004

<u>Appt Type</u>	<u>1996</u>	<u>1997</u>	<u>1998</u>	<u>1999</u>	<u>2000</u>	<u>2001</u>	<u>2002</u>	<u>2003</u>	<u>2004</u>
<u>Assistant Professors</u>									
Initial New Hires	28	37	49	59	50	53	56	42	31
2nd Fall	89.3	97.3	95.9	94.9	90.0	92.5	96.4	100.0	--
3rd Fall	78.6	89.2	83.7	74.6	84.0	79.2	87.5	--	--
4th Fall	57.1	81.1	77.6	69.5	78.0	73.6	--	--	--
5th Fall	50.0	78.4	69.4	61.0	74.0	--	--	--	--
6th Fall	39.3	70.3	63.3	57.6	--	--	--	--	--
7th Fall	39.3	67.6	59.2	--	--	--	--	--	--
8th Fall	39.3	64.9	--	--	--	--	--	--	--
<u>Other Tenure Track Faculty</u>									
Initial New Hires	1	3	4	10	4	5	10	9	4
2nd Fall	--	100.0	100.0	100.0	100.0	100.0	100.0	100.0	--
3rd Fall	--	100.0	100.0	70.0	100.0	100.0	100.0	--	--
4th Fall	--	100.0	100.0	60.0	100.0	80.0	--	--	--
5th Fall	--	100.0	75.0	50.0	100.0	--	--	--	--
6th Fall	--	100.0	75.0	50.0	--	--	--	--	--
7th Fall	--	33.3	25.0	--	--	--	--	--	--
8th Fall	--	33.3	--	--	--	--	--	--	--
<u>Non-Tenure Track Faculty</u>									
Initial New Hires	29	47	52	51	39	45	31	20	14
2nd Fall	55.2	61.7	76.9	74.5	64.1	62.2	83.9	55.0	--
3rd Fall	41.4	46.8	63.5	58.8	51.3	48.9	71.0	--	--
4th Fall	27.6	42.6	51.9	56.9	41.0	44.4	--	--	--
5th Fall	27.6	34.0	42.3	41.2	46.2	--	--	--	--
6th Fall	17.2	29.8	36.5	43.1	--	--	--	--	--
7th Fall	17.2	25.5	32.7	--	--	--	--	--	--
8th Fall	13.8	21.3	--	--	--	--	--	--	--
<u>Lab School Faculty</u>									
Initial New Hires	10	8	8	5	10	11	6	4	10
2nd Fall	60.0	75.0	87.5	60.0	80.0	81.8	50.0	75.0	--
3rd Fall	40.0	75.0	75.0	40.0	80.0	72.7	50.0	--	--
4th Fall	30.0	37.5	75.0	40.0	80.0	63.6	--	--	--
5th Fall	20.0	37.5	62.5	40.0	60.0	--	--	--	--
6th Fall	20.0	37.5	50.0	40.0	--	--	--	--	--
7th Fall	20.0	37.5	50.0	--	--	--	--	--	--
8th Fall	20.0	37.5	--	--	--	--	--	--	--

Retention Percentages of New Full-Time Faculty and Staff
Fall 1996 through Fall 2004

<u>Appt Type</u>									
<u>Administrative/Professional</u>	<u>1996</u>	<u>1997</u>	<u>1998</u>	<u>1999</u>	<u>2000</u>	<u>2001</u>	<u>2002</u>	<u>2003</u>	<u>2004</u>
Initial New Hires	70	81	85	98	81	92	78	52	70
2nd Fall	71.4	74.1	76.5	79.6	76.5	80.4	79.5	73.1	--
3rd Fall	58.6	58.0	51.8	64.3	63.0	68.5	69.2	--	--
4th Fall	47.1	51.9	44.7	53.1	51.9	59.8	--	--	--
5th Fall	38.6	44.4	40.0	46.9	39.5	--	--	--	--
6th Fall	38.6	39.5	32.9	37.8	--	--	--	--	--
7th Fall	35.7	34.6	31.8	--	--	--	--	--	--
8th Fall	32.9	32.1	--	--	--	--	--	--	--
<u>Civil Service</u>	<u>1996</u>	<u>1997</u>	<u>1998</u>	<u>1999</u>	<u>2000</u>	<u>2001</u>	<u>2002</u>	<u>2003</u>	<u>2004</u>
Initial New Hires	116	150	128	127	156	133	101	27	24
2nd Fall	83.6	84.7	81.3	86.6	83.3	85.7	84.2	100.0	--
3rd Fall	75.9	76.7	68.8	68.5	76.9	77.4	79.2	--	--
4th Fall	65.5	70.7	66.4	59.8	71.2	69.9	--	--	--
5th Fall	59.5	66.0	64.8	54.3	68.6	--	--	--	--
6th Fall	55.2	62.7	61.7	46.5	--	--	--	--	--
7th Fall	53.4	60.0	57.0	--	--	--	--	--	--
8th Fall	49.1	56.0	--	--	--	--	--	--	--

A new hire is defined as a staff member who was present that fall but not in the previous fall. He/she may have been hired any time between the two falls. A rehired person, is counted as a new hire, if a year had elapsed between leaving and rehire. Only full-time new hires were counted. A person who changed appointment types, that was still employed by the University in a subsequent fall at a 50% or more FTE, were counted as being retained. Library faculty were included with faculty, based on their tenure status. New hires for 1999 count Mennonite College of Nursing employees.

Retention Percentages of New Full-Time Assistant Professors and
New Full-Time Administrative/Professionals by Minority Status
Fall 1996 to Fall 2004

		Assistant Professors								
		Percent								
Minority		1996	1997	1998	1999	2000	2001	2002	2003	2004
	Initial New Hires	1	3	6	13	4	9	5	3	3
	2nd Fall	100.0	100.0	100.0	100.0	100.0	77.8	80.0	100.0	--
	3rd Fall	100.0	66.7	100.0	61.5	100.0	66.7	80.0	--	--
	4th Fall	100.0	66.7	100.0	46.2	100.0	66.7	--	--	--
	5th Fall	100.0	66.7	100.0	38.5	75.0	--	--	--	--
	6th Fall	100.0	66.7	100.0	30.8	--	--	--	--	--
	7th Fall	100.0	33.3	100.0	--	--	--	--	--	--
	8th Fall	100.0	33.3	--	--	--	--	--	--	--
		Percent								
Non-Minority		1996	1997	1998	1999	2000	2001	2002	2003	2004
	Initial New Hires	27	34	43	46	46	44	51	39	28
	2nd Fall	88.9	97.1	95.3	93.5	89.1	95.5	98.0	100.0	--
	3rd Fall	77.8	91.2	81.4	78.3	82.6	81.8	88.2	--	--
	4th Fall	55.6	82.4	74.4	76.1	76.1	75.0	--	--	--
	5th Fall	48.1	79.4	65.1	67.4	73.9	--	--	--	--
	6th Fall	37.0	70.6	58.1	65.2	--	--	--	--	--
	7th Fall	37.0	70.6	53.5	--	--	--	--	--	--
	8th Fall	37.0	67.6	--	--	--	--	--	--	--
		Administrative/Professionals								
		Percent								
Minority		1996	1997	1998	1999	2000	2001	2002	2003	2004
	Initial New Hires	15	11	18	19	13	18	11	12	10
	2nd Fall	66.7	63.6	88.9	89.5	61.5	72.2	81.8	75.0	--
	3rd Fall	60.0	36.4	44.4	78.9	46.2	61.1	63.6	--	--
	4th Fall	26.7	27.3	38.9	52.6	38.5	50.0	--	--	--
	5th Fall	20.0	18.2	33.3	42.1	30.8	--	--	--	--
	6th Fall	20.0	18.2	22.2	26.3	--	--	--	--	--
	7th Fall	13.3	18.2	22.2	--	--	--	--	--	--
	8th Fall	13.3	18.2	--	--	--	--	--	--	--
		Percent								
Non-Minority		1996	1997	1998	1999	2000	2001	2002	2003	2004
	Initial New Hires	55	70	67	79	68	74	67	40	60
	2nd Fall	72.7	75.7	73.1	77.2	79.4	82.4	79.1	72.5	--
	3rd Fall	58.2	61.4	53.7	60.8	66.2	70.3	70.1	--	--
	4th Fall	52.7	55.7	46.3	53.2	54.4	62.2	--	--	--
	5th Fall	43.6	48.6	41.8	48.1	41.2	--	--	--	--
	6th Fall	43.6	42.9	35.8	40.5	--	--	--	--	--
	7th Fall	41.8	37.1	34.3	--	--	--	--	--	--
	8th Fall	38.2	34.3	--	--	--	--	--	--	--

Educating Illinois 2003-2010 charges the University with increasing the retention and promotion of faculty and staff from protected classes. In supporting University planning, these matrices display retention rates for new full-time assistant professors, administrative/professional and civil service staff by racial/ethnic designation.

Retention Percentages of New Full-Time Civil Service Staff by Minority Status
Fall 1996 to Fall 2004

Minority	Civil Service								
	Percent								
	1996	1997	1998	1999	2000	2001	2002	2003	2004
Initial New Hires	16	11	16	28	20	16	12	3	2
2nd Fall	68.8	90.9	75.0	71.4	80.0	81.3	91.7	100.0	--
3rd Fall	62.5	81.8	50.0	53.6	80.0	62.5	83.3	--	--
4th Fall	50.0	72.7	43.8	42.9	75.0	56.3	--	--	--
5th Fall	50.0	72.7	43.8	32.1	75.0	--	--	--	--
6th Fall	37.5	63.6	43.8	32.1	--	--	--	--	--
7th Fall	37.5	63.6	43.8	--	--	--	--	--	--
8th Fall	37.5	63.6	--	--	--	--	--	--	--

Non-Minority	Percent								
	1996	1997	1998	1999	2000	2001	2002	2003	2004
Initial New Hires	100	139	112	99	136	117	89	24	22
2nd Fall	86.0	84.2	82.1	90.9	83.8	86.3	83.1	100.0	--
3rd Fall	78.0	76.3	71.4	72.7	76.5	79.5	78.7	--	--
4th Fall	68.0	70.5	69.6	64.6	70.6	71.8	--	--	--
5th Fall	61.0	65.5	67.9	58.6	67.6	--	--	--	--
6th Fall	58.0	62.6	64.3	50.5	--	--	--	--	--
7th Fall	56.0	59.7	58.9	--	--	--	--	--	--
8th Fall	51.0	55.4	--	--	--	--	--	--	--

Educating Illinois 2003-2010 charges the University with increasing the retention and promotion of faculty and staff from protected classes. In supporting University planning, these matrices display retention rates for new full-time assistant professors, administrative/professional and civil service staff by racial/ethnic designation.



*Institutional
Resources*

Historical State Appropriations and University Income Fund
for Operations and Grants by Source of Funds
Fiscal Year 2001 through Fiscal Year 2005
(Excludes Retirement)

(dollars in thousands)

	<u>2001</u>	<u>2002</u>	<u>2003</u>	<u>2004</u>	<u>2005</u>
General Revenue Fund	\$74,705.4	\$79,310.5 ¹	\$73,278.8 ²	\$80,452.0 ³	\$80,452.0
University Income Fund ⁴	52,117.5	55,146.1	59,762.3	63,985.8	66,676.0
Educational Assistance Fund	13,056.4	13,709.2	14,394.7	0.0	0.0
Students Integrating Appropriation	--	365.0 ⁵	--	--	--
Total Appropriation	\$139,879.3	\$148,530.8	\$147,435.8	\$144,437.8	\$147,128.0

¹ Original appropriation. Due to a mid-year rescission, the actual spending authority was \$78,246.50.

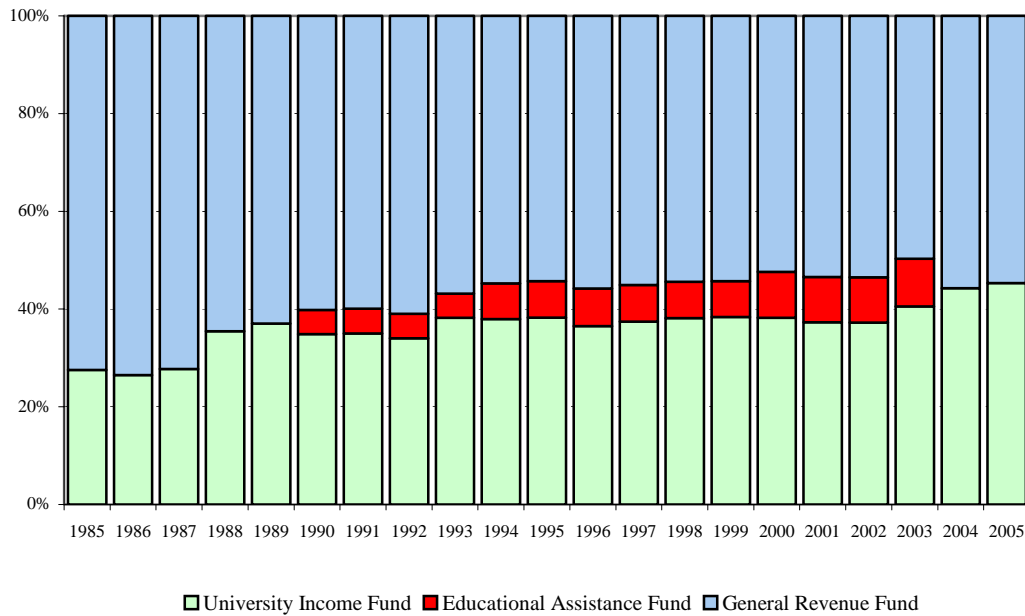
² Original appropriation. Due to a mid-year rescission, the actual spending authority was \$70,876.07.

³ Original appropriation. Due to a mid-year rescission, the actual spending authority was \$78,904.48.

⁴ As of August 2, 1996, University Income Fund is held locally and not appropriated by the General Assembly.

⁵ Lump sum appropriation for HECA grants. This becomes part of FY2003 General Revenue Base.

Appropriations and University Income Fund for Operations and
Grants by Source of Funds



Total Expenditures and Mandatory Transfers
 Fiscal Year 2000 through Fiscal Year 2004
 (dollars in thousands)

	Total Operating Funds by Fund Type				
	2000	2001	2002	2003	2004
State Appropriated Tax Funds and					
University Income Fund	\$133,642.3	\$139,390.3	\$145,309.5	\$140,947.2	\$138,379.6
Gifts, Grants and Contracts	25,633.5	27,378.9	30,280.6	32,556.5	31,844.5
Agency	30,377.3	35,101.4	36,086.8	36,422.1	47,011.3
Bond Revenue/Other Auxiliary	48,828.5	52,071.4	53,680.6	48,213.1	45,921.3
Total	\$238,481.6 ¹	\$253,942.0 ²	\$265,357.5 ³	\$258,138.9 ⁴	263,156.75 ⁵

	State Appropriated Funds by Object Class				
	2000	2001	2002	2003	2005
Personal Services	\$101,428.1	\$105,337.1	\$111,535.5	\$108,291.5	\$102,942.4
Contractual	15,491.4	17,414.7	17,912.6	14,077.1	16,673.9
Equipment and Books	6,738.4	7,024.4	6,907.3	5,669.9	6,129.5
Commodities	2,264.2	2,528.7	2,511.4	2,191.5	2,546.1
Other	7,720.2	7,085.4	6,442.9	6,447.6	5,782.5
Group Health Insurance	--	--	--	3,078.3	3,078.3
Medicare	--	--	--	1,191.3	1,227.0
Total	\$133,642.3	\$139,390.3	\$145,309.7	\$140,947.2	\$138,379.6

	State Appropriated Funds by Functional Classification				
	2000	2001	2002	2003	2004
Instruction	\$77,773.3	\$78,933.9	\$83,788.2	\$79,257.8	\$79,548.9
Operation and Maintenance	22,705.4	20,080.8	20,224.3	19,125.5	16,757.5
Institutional Support	13,450.5	16,686.0	16,994.4	15,307.1	14,543.4
Organized Research	1,172.3	2,613.4	2,804.2	1,809.3	2,483.9
Public Service	1,124.1	2,839.7	2,970.4	2,820.1	2,649.3
Academic Support	12,582.1	12,722.7	13,616.1	12,851.3	12,820.6
Student Services	4,834.6	5,513.8	4,912.1	5,506.5	5,270.7
Group Health Insurance	--	--	--	3,078.3	3,078.3
Medicare	--	--	--	1,191.3	1,227.0
Total	\$133,642.3	\$139,390.3	\$145,309.7	\$140,947.2	\$138,379.6

¹ Excludes \$29.1 million in Payments on Behalf of the University.

² Excludes \$32.2 million in Payments on Behalf of the University.

³ Excludes \$33.5 million in Payments on Behalf of the University.

⁴ Excludes \$35.1 million in Payments on Behalf of the University.

⁵ Excludes \$103.6 million in Payments on Behalf of the University.

Current Funds Revenues by Source
FY2003 and FY2004

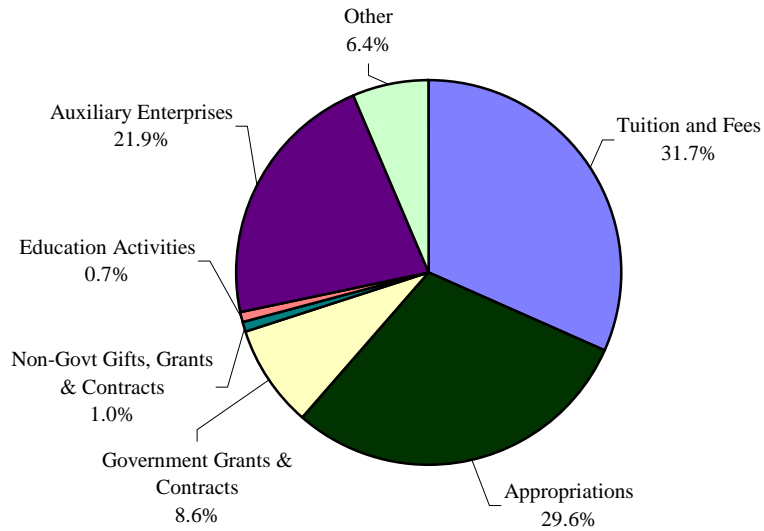
Source	Fiscal Year 2003		Fiscal Year 2004	
	Amount	Percent of Total	Amount	Percent of Total
Tuition and Fees	\$82,569,129	30.8	\$84,579,827	31.7
State Government Tax Funds Appropriations	85,316,120	31.8	78,904,476	29.6
Government Grants and Contracts				
Federal	17,258,729	6.4	18,851,419	7.1
State	6,171,414	2.3	4,092,027	1.5
Non-Governmental Gifts, Grants and Contracts	2,450,953	0.9	2,558,046	1.0
Sales & Services of Education Activities	1,821,619	0.7	1,913,297	0.7
Sales & Services of Auxiliary Enterprises	56,249,152	21.0	58,447,697	21.9
Other Sources	<u>16,047,514</u>	<u>6.0</u>	<u>17,094,456</u>	<u>6.4</u>
Total	267,884,630 ¹	100.0	266,441,245 ²	100.0

¹ Excludes \$35.1 million in Payments on Behalf of the University.

² Excludes \$103.6 million in Payments on Behalf of the University.

Source: Report of the Comptroller

Current Funds Revenues by Source
FY 2004



Instructional Expenditures¹ from Appropriated Funds
Per Full-Time Equivalent (FTE) Student
at Illinois Public Universities
FY2003

<u>Institution</u>	<u>Undergraduate</u>	<u>Graduate</u>	<u>Weighted Average</u>
Chicago State University	\$ 8,218	\$ 7,101	\$ 7,959
Eastern Illinois University	6,258	9,047	6,577
Governors State University	7,184	8,123	7,660
Northeastern Illinois University	5,681	7,903	6,114
Western Illinois University	5,615	7,363	5,864
Illinois State University	5,578	8,475	5,862
Northern Illinois University	5,614	8,287	6,209
Southern Illinois University			
Carbondale	6,253	11,654	7,237
Edwardsville	<u>5,489</u>	<u>9,530</u>	<u>6,117</u>
Southern Illinois University Total	5,944	10,891	6,793
University of Illinois			
Chicago	5,083	11,524	7,125
Springfield	7,495	7,150	7,358
Urbana-Champaign	<u>5,849</u>	<u>12,529</u>	<u>7,954</u>
University of Illinois Total	5,661	11,877	7,648
Public Universities Total	\$ 5,825	\$ 10,450	\$ 6,899

¹ Instructional Expenditures includes Direct and Indirect Instruction, Departmental Research and Departmental, College and University Overheads.

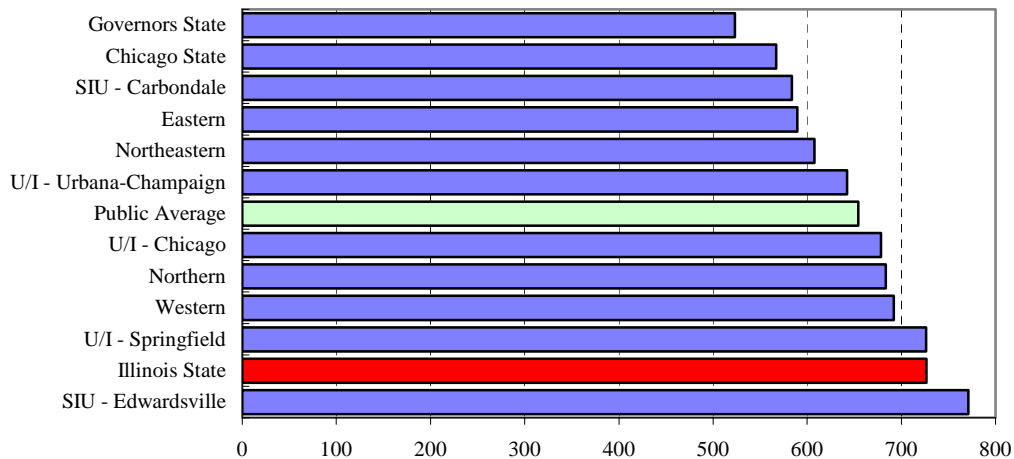
Source: Illinois Board of Higher Education Discipline Cost Study

Credit Hours Produced Per Faculty Staff-Year¹ at Illinois Public Universities in FY2003

Institution	Semester Credit Hours	Staff-Year Instruction		Credit Hours Per Instructional Staff-Year
		Direct	Indirect	
Chicago State University	140,268	219.66	27.70	567
Eastern Illinois University	298,940	414.98	92.13	589
Governors State University	102,180	182.57	12.79	523
Northeastern Illinois University	237,400	342.86	47.69	608
Western Illinois University	339,632	370.94	119.78	692
Illinois State University	552,276	605.53	154.45	727
Northern Illinois University	600,740	739.80	139.16	683
Southern Illinois University				
Carbondale	477,133	581.31	236.38	584
Edwardsville	<u>315,330</u>	<u>302.71</u>	<u>106.15</u>	<u>771</u>
Southern Illinois University Total	792,463	884.02	342.53	646
University of Illinois				
Chicago	635,651	790.31	146.53	679
Springfield	88,389	114.56	7.13	726
Urbana-Champaign	<u>1,171,455</u>	<u>1,473.59</u>	<u>349.71</u>	<u>642</u>
University of Illinois Total	1,895,495	2,378.46	503.37	658
Public Universities Total	4,959,394	6,138.82	1,439.60	654

Educating Illinois 2003-2010 contains the goal to increase individualized attention among students, faculty and staff by lowering instructional credit hour per staff year ratio to the statewide average. The fiscal year 2003 value at Illinois State University (727) is 11 percent higher than the statewide average.

Credit Hours Per Instructional Staff-Year - Fiscal Year 2003



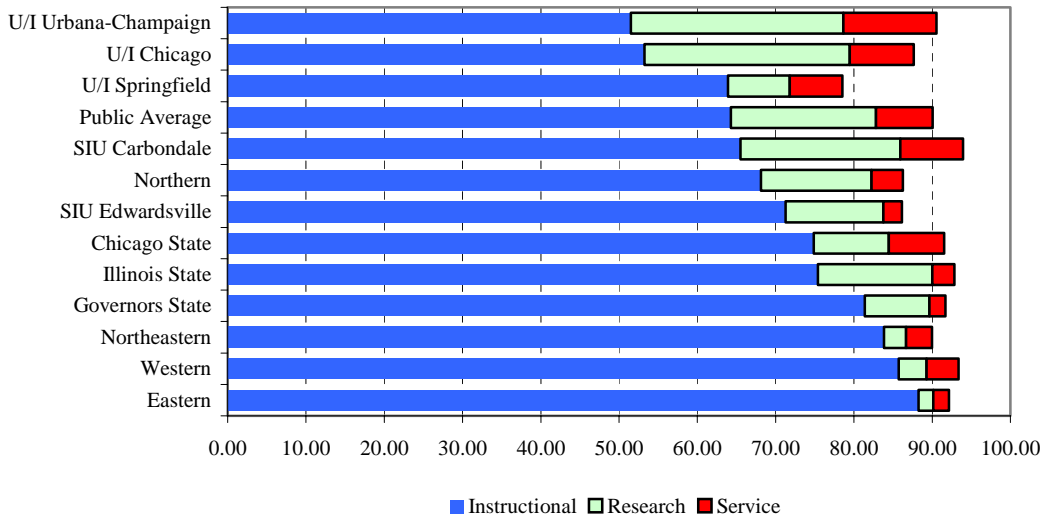
¹ Faculty staff-years are calculated such that a typical full-time nine month appointment is .75 staff years.

Source: Illinois Board of Higher Education Faculty Credit Hour Study.

Proportion of Departmental Faculty Staff-Years
Devoted to Functions at Illinois Public Universities in FY2003

<u>Institution</u>	Total <u>Instructional</u>	Total <u>Research</u>	Public <u>Service</u>	Departmental <u>Administration</u>	Total <u>Department</u>
Chicago State University	74.9%	9.6%	7.1%	8.5%	100.0%
Eastern Illinois University	88.3	1.9	2.0	7.9	100.0
Governors State University	81.4	8.3	2.0	8.3	100.0
Northeastern Illinois University	83.8	2.8	3.3	10.0	100.0
Western Illinois University	85.7	3.5	4.1	6.6	100.0
Illinois State University	75.4	14.6	2.8	7.2	100.0
Northern Illinois University	68.1	14.1	4.0	13.7	100.0
Southern Illinois University					
Carbondale	65.5	20.4	8.0	6.1	100.0
Edwardsville	<u>71.3</u>	<u>12.5</u>	<u>2.4</u>	<u>13.9</u>	<u>100.0</u>
Southern Illinois University Total	67.3	17.9	6.2	8.5	100.0
University of Illinois					
Chicago	53.2	26.2	8.2	12.4	100.0
Springfield	63.9	7.9	6.7	21.5	100.0
Urbana-Champaign	<u>51.5</u>	<u>27.1</u>	<u>11.9</u>	<u>9.4</u>	<u>100.0</u>
University of Illinois Total	52.5	26.2	10.5	10.8	100.0
Public Universities Total	64.3%	18.5%	7.2%	10.0%	100.0%

Percent of Faculty Staff-Years Devoted to Functions



Source: Illinois Board of Higher Education Faculty Credit-Hour Study

Sponsored Research, Instruction, Creative Works, and Service
(State, Federal, and Private Funding)
Fiscal Years 2001 through 2004

<u>Submissions</u> ¹	Fiscal Year 2001		Fiscal Year 2002		Fiscal Year 2003		Fiscal Year 2004 ³	
	<u>Amount</u>	<u>N</u>	<u>Amount</u>	<u>N</u>	<u>Amount</u>	<u>N</u>	<u>Amount</u>	<u>N</u>
Research	\$20,198,127	102	\$30,551,780	137	\$66,319,402	176	\$56,595,309	171
Instruction	27,121,366	159	29,215,545	97	17,669,330	96	16,575,958	120
Creativity	184,326	10	45,000	2	172	1	134,261	1
Public Service	6,245,796	51	5,867,772	70	6,678,940	69	5,031,998	36
Other	<u>301,958</u>	<u>6</u>	<u>3,971,150</u>	<u>27</u>	<u>10,054,291</u>	<u>41</u>	<u>30,624,469</u>	<u>39</u>
Total	\$54,051,573	328	\$69,651,247	333	\$100,722,135	383	\$108,961,995	367

<u>Awards</u> ²	Fiscal Year 2001		Fiscal Year 2002		Fiscal Year 2003		Fiscal Year 2004 ³	
	<u>Amount</u>	<u>N</u>	<u>Amount</u>	<u>N</u>	<u>Amount</u>	<u>N</u>	<u>Amount</u>	<u>N</u>
Research	\$3,672,291	67	\$4,437,884	75	\$5,695,799	77	\$6,081,302	82
Instruction	13,964,708	152	10,863,953	94	6,870,761	90	7,675,333	148
Creativity	136,852	9	75,200	6	13,750	1	138,771	2
Public Service	1,974,392	39	4,512,762	81	3,961,409	69	4,653,571	60
Other	<u>87,200</u>	<u>3</u>	<u>379,008</u>	<u>8</u>	<u>1,416,851</u>	<u>29</u>	<u>2,020,271</u>	<u>27</u>
Total	\$19,835,443	270	\$20,268,807	264	\$17,958,570	266	\$20,569,248	319

Awards by Source
Fiscal Years 2001 through 2004

<u>Type of Funding</u>	Fiscal Year 2001		Fiscal Year 2002		Fiscal Year 2003		Fiscal Year 2004 ³	
	<u>Amount</u>	<u>Pct</u>	<u>Amount</u>	<u>Pct</u>	<u>Amount</u>	<u>Pct</u>	<u>Amount</u>	<u>Pct</u>
Federal Awards	\$7,309,312	36.8	\$8,232,001	40.6	\$8,059,950	44.9	\$9,306,694	45.2
Federal Flow-through	--	--	374,403	1.8	1,139,694	6.3	2,357,811	11.5
State Awards	6,143,251	31.0	7,478,792	36.9	5,513,798	30.7	4,473,942	21.8
Corporate Awards	2,128,495	10.7	1,205,653	5.9	853,995	4.8	899,805	4.4
Other Awards	<u>4,254,385</u>	<u>21.4</u>	<u>2,977,958</u>	<u>14.7</u>	<u>2,391,133</u>	<u>13.3</u>	<u>3,530,996</u>	<u>17.2</u>
Total Awards	\$19,835,443	100.0	\$20,268,807	100.0	\$17,958,570	100.0	\$20,569,248	100.0

¹ Proposals submitted between July 1 and June 30.

² Awards approved between July 1 and June 30.

³ Includes Conference Services contracts.

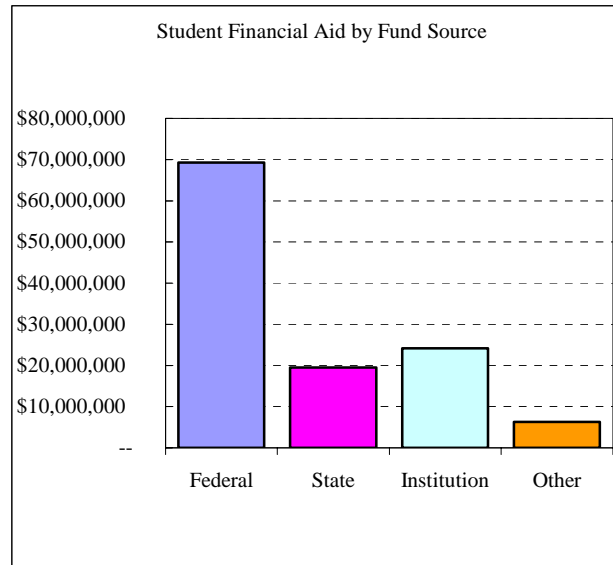
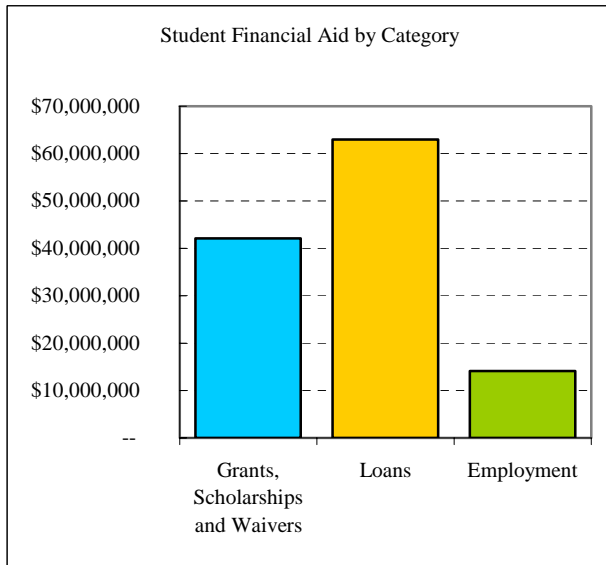
Student Financial Aid and Institutional Support
Fiscal Year 2004¹

Approximately 74 percent of all students who attend the University receive assistance through loans, scholarships, tuition waivers, grants and employment.

Type	Fund Source				Total	Students
	Federal	State	Institution	Other		
Grants, Scholarships & Waivers	\$9,904,430	\$19,527,890	\$10,900,184	\$1,819,974	\$42,152,478	10,336
Loans	\$58,564,432	--	--	\$4,438,694	\$63,003,126	10,190
Employment	\$843,931	--	\$13,261,250	--	\$14,105,181	6,108
Total	\$69,312,793	\$19,527,890	\$24,161,434	\$6,258,668	\$119,260,785	15,130 ²

¹ The Financial Aid Fiscal Year is Fall, Spring and Summer.

² Number of students that received financial support in Fiscal Year 2004. Students may receive multiple awards.





*Facilities
Information*

Residence Hall Occupancy
by Gender and Class Level
Fall 2000 through Fall 2004

<u>Gender</u>	<u>Fall Semester</u>				
	<u>2000</u>	<u>2001</u>	<u>2002</u>	<u>2003</u>	<u>2004</u>
Male	2,887	2,965	2,846	2,795	2,768
Female	4,510	4,596	4,509	4,331	4,069
Total	7,397	7,561	7,355	7,126	6,837

<u>Class</u>	<u>Fall Semester</u>				
	<u>2000</u>	<u>2001</u>	<u>2002</u>	<u>2003</u>	<u>2004</u>
Freshmen	4,187	4,365	4,112	3,973	3,627
Sophomore	1,770	1,839	1,872	1,917	2,009
Junior	823	789	830	718	743
Senior	497	451	456	449	410
Unclassified	42	65	39	26	13
Graduate Students	78	52	46	43	35
Total	7,397	7,561	7,355	7,126	6,837

Residence Buildings and Associated Facilities
as of Fall 2004
(dollars in thousands)

<u>Name</u>	<u>Year of Construction</u>	<u>Square Feet</u>	<u>Net</u>	<u>Facilities</u>	<u>Repair Costs</u>
			<u>Assigned</u>	<u>Condition</u>	
			<u>Sq. Ft.</u>	<u>Index</u>	
Atkin Hall	1962	80,173	49,191	72.78%	\$12,015.4
Barton Hall	1952	36,272	21,754	65.05%	\$4,602.4
Cardinal Court 1st Additions	1965	61,974	47,174	--	--
Cardinal Court Buildings	1958	52,618	40,053	--	--
Cardinal Court Laundry Room	1963	3,680	3,346	--	--
Cardinal Court Meeting Room	1986	1,545	1,208	--	--
Colby Hall	1962	80,173	50,095	69.90%	\$11,539.9
Connecting Facilities Btn Atk/Col	1962	29,675	23,784	--	--
Connecting North & South Towers	1969	32,463	2,530	--	--
Dunn Barton Connecting	1952	7,788	5,533	--	--
Dunn Hall	1952	36,313	21,993	65.05%	\$4,607.6
Farm House #1 (Lexington)	2002	1,813	1,450	--	--
Farm House #2 (Lexington)	2002	1,200	960	--	--
Feeney Food Center	1960	43,894	34,352	54.19%	\$5,513.4
Hamilton Hall	1960	80,173	48,224	74.16%	\$12,243.2
Hamilton Whitten Connecting	1960	29,675	20,240	--	--
Haynie Hall	1964	97,750	54,737	53.64%	\$10,585.7
Hewett Hall	1966	161,268	87,488	49.25%	\$15,757.0
Linkins Center	1964	44,134	28,463	57.54%	\$5,847.6
Manchester Hall	1966	161,268	89,572	51.47%	\$16,467.3
Office of Residential Life Bldg	1989	16,500	11,393	8.32%	\$238.0
ORL Laundry Bldg	1989	4,262	2,750	2.97%	\$27.0
Shelbourne Apartments	1971	67,730	59,100	--	--
Shelbourne Apts Maintenance	1971	1,647	4,078	--	--
Tunnel Btwn Dunn-Barton/Walker	1955	1,224	0	--	--
University Residence	1971	7,615	7,564	--	--
Vrooman Food Center	1966	65,000	40,623	38.06%	\$5,730.0
Walker Hall	1955	85,960	62,170	54.87%	\$9,122.9
Watterson Dining	1969	75,639	51,537	38.04%	\$7,012.3
Watterson Towers, North	1969	259,922	199,213	42.01%	\$20,934.3
Watterson Towers, South	1969	260,130	199,145	47.54%	\$23,793.3
Whitten Hall	1960	80,173	49,750	68.79%	\$11,356.7
Wilkins Hall	1964	97,720	54,190	53.63%	\$10,580.5
Wright Hall	1964	97,750	53,825	53.68%	\$10,593.6
Total		2,165,121	1,427,485		\$198,568.4

In 2002 Illinois State University completed a facilities condition assessment. The Facilities Condition Index (FCI) is an indication of the deficiency value rating of a building. It is calculated by dividing the estimated cost of current deficiencies by the replacement value of the facility. An aggregate FCI of 44.68% evidences the overall condition of campus facilities was found to be in fair to poor condition. National standards suggest that buildings with an FCI greater than 10% are in poor condition. Displayed above and on the next page are the estimated maintenance repair dollars \$478.5 million.

Buildings without an FCI or repair costs were not assessed for one of the following reasons: less than 10,000 square feet; combined with adjoining facilities; scheduled for demolition, or are not connected to the centralized utility systems.

Academic Buildings
as of Fall 2004
(dollars in thousands)

<u>Name</u>	<u>Year of Construction</u>	<u>Square Feet</u>	<u>Net</u>	<u>Facilities</u>	<u>Repair Costs</u>
			<u>Assigned</u>	<u>Condition</u>	
			<u>Sq. Ft.</u>	<u>Index</u>	
Adlai E. Stevenson Hall	1966	162,180	104,801	59.90%	\$20,211.2
Art Studio Bldg	1993	10,972	9,427	--	--
Centennial East	1959	59,455	38,045	53.66%	\$6,675.8
Centennial West	1959	30,182	18,404	71.86%	\$4,769.1
Center for the Visual Arts	1973	132,916	84,311	55.93%	\$16,087.2
Clarence R Ropp Agriculture Bldg	1982	30,738	24,044	19.51%	\$1,055.8
Cook Hall	1896	34,611	21,570	17.82%	\$1,412.9
DeGarmo Hall	1973	115,376	63,471	15.89%	\$3,642.6
Educational Administration Bldg	1967	2,206	1,581	--	--
Edwards Hall	1909	40,169	22,541	49.10%	\$4,223.9
Fairchild Hall	1952	80,903	45,662	65.63%	\$11,380.7
Fell Hall	1918	94,856	52,136	5.35%	\$1,085.7
Felmley Hall of Science	1930	53,096	28,399	52.39%	\$7,192.1
Felmley Science Annex	1964	81,969	52,028	60.36%	\$12,085.6
Horton Fieldhouse	1963	198,391	138,147	50.18%	\$23,599.9
Hudelson Bldg	1960	3,000	1,972	--	--
Julian Hall	1970	57,170	31,839	2.47%	\$303.8
McCormick Hall	1926	63,440	45,680	66.41%	\$8,762.7
Milner Library	1976	230,710	186,980	52.44%	\$26,280.2
Moulton Hall	1912	50,408	28,171	40.11%	\$4,461.4
Old Union	1956	50,553	26,674	38.61%	\$3,760.6
Rachel Cooper	1952	24,046	14,714	62.81%	\$3,562.6
Schroeder Hall-East	1957	58,060	36,634	63.87%	\$7,988.4
Schroeder Hall-West	1965	46,348	23,823	72.38%	\$8,004.9
Science Laboratory Building	1997	112,000	79,257	0.05%	\$20.1
Thomas Metcalf School	1957	119,500	73,276	56.57%	\$16,149.9
Turner Hall	1963	97,118	64,977	46.73%	\$9,574.0
University High School	1965	134,600	96,138	56.72%	\$15,815.7
Vitro Center (Glass House)	1949	4,705	4,092	--	--
Vitro Center Annex	1997	540	540	--	--
Williams Hall	1940	97,153	57,392	35.55%	\$7,279.7
Total		2,277,371	1,476,726		\$225,386.7